

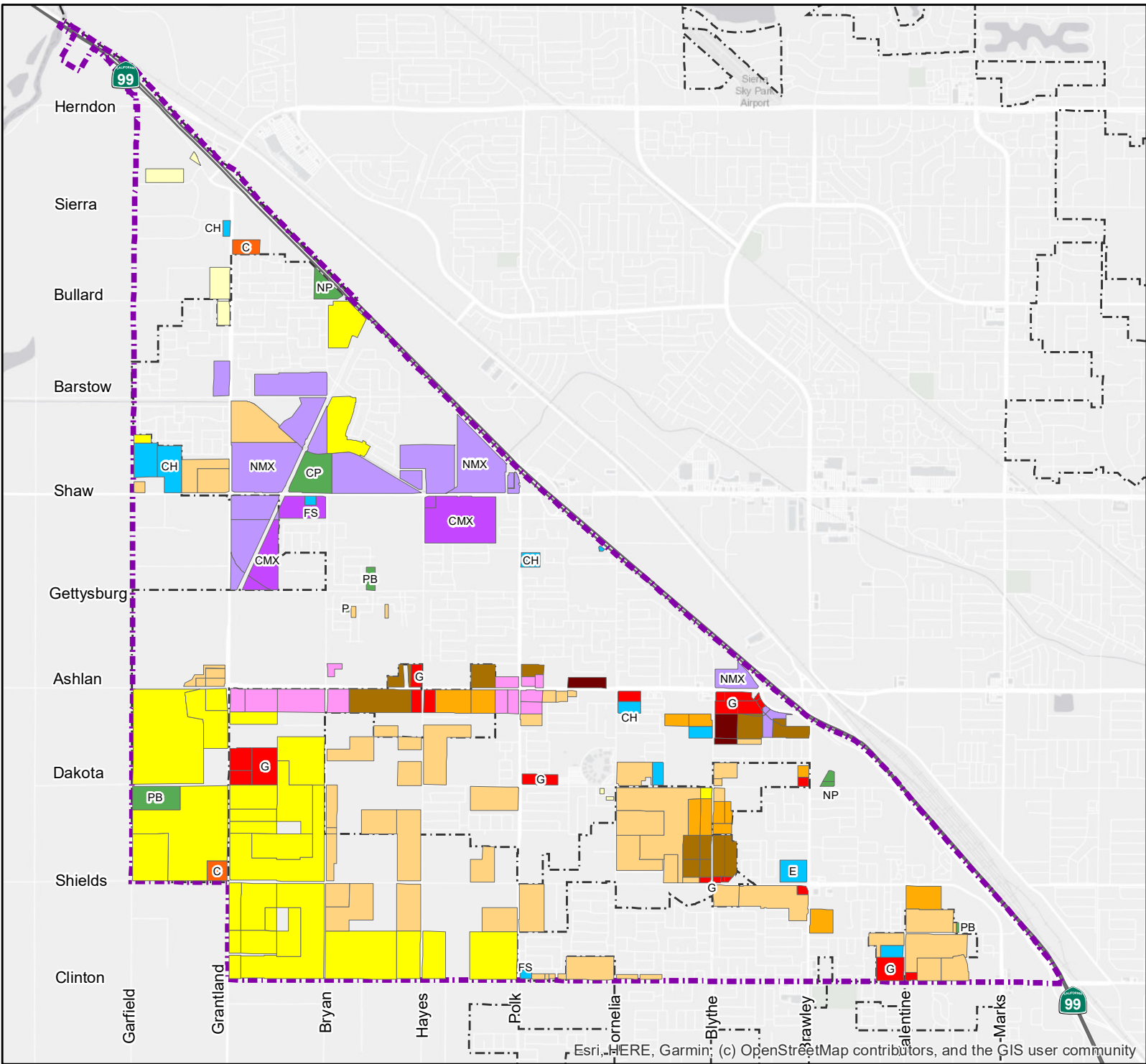
Exhibit D
Plan Amendment P22-01353
Proposed Changes to the General Plan
Planned Land Use Map (LU-1)



Exhibit Map



Proposed Land Use Changes in the West Area Neighborhoods Specific Plan Area



Proposed Land Use Changes

RESIDENTIAL

- Low Density (1-3.5 D.U./acre)
- Medium Low Density (3.5-6 D.U./acre)
- Medium Density (5.0-12 D.U./acre)
- Medium High Density (12-16 D.U./acre)
- Urban Neighborhood (16-30 D.U./acre)
- High Density (30-45 D.U./acre)

COMMERCIAL

- Community

- General

EMPLOYMENT

- Office

MIXED USE

- Neighborhood Mixed Use
- Corridor/Center Mixed Use

OPEN SPACE

- Community Park
- Neighborhood Park
- Park

- Ponding Basin

PUBLIC FACILITIES

- Public/Quasi-public Facility
- Elementary School
- Church
- Fire Station

- West Area Neighborhoods Specific Plan Area
- City Limits

Proposes to reclassify 2,330 acres of land use.