



RCCB Fresno

Reyes Coca-Cola Bottling + Reyes Holdings
New 205,000 SF Distribution Center

REYES FAMILY
OF BUSINESSES





OUR Purpose

Partner with the **best brands in the world**
to **refresh** our local communities

OUR Vision

Be the **leader** in the beverage business by **delivering unmatched value** to our employees, customers, and local communities

OUR Strategic Pillars



Unlock the
full potential
of our
people



Make a
positive
impact in our
communities



Win in
every
market



Deliver
operational
excellence



Invest in
transformational
growth



OUR Core Values

PEOPLE & SAFETY • RELATIONSHIPS • INTEGRITY • DEDICATION • EXCELLENCE

RCCB Cares



We believe in making a **positive impact in the communities where we live and work**. As part of our commitment, we believe in the power and necessity of working together to lift up those around us and leave a **better world for future generations**.



Reyes Cares encompasses five focus areas where we feel we can have the most meaningful impact – Community, Recycling, Energy, Fuel & Emissions, and Water



RCCB Cares COMMUNITY

We know that when the communities where we live and work thrive, our business thrives. Whether it be through volunteerism, product donations, philanthropic support, or partnerships, we strive to have a positive and lasting impact in our communities, especially in times of need.



RCCB Cares RECYCLING

We seek to support a circular economy and keep waste out of nature by finding innovative ways to encourage our employees to recycle – at work, at home, and in our communities. Similarly, we work to minimize, recycle, and reuse materials involved in our manufacturing and distribution operations across our global enterprise.



RCCB Cares ENERGY

Energy plays a critical role in our ability to be a global leader in the production and distribution of food and beverage products. In all of our facilities, we are focused on identifying opportunities to increase our energy efficiency. This includes investments in energy-saving improvements in our existing facilities and designing new facilities with energy conservation in mind.



RCCB Cares FUEL & EMISSIONS

Our logistics network is enabled by a fleet of 12K+ trucks/trailers dedicated to delivering millions of cases of food and beverages to customers nationwide. Through Reyes Fleet Management and their use of new technologies, training and improved operational practices, we continue to make progress towards our goal of drastically reducing fuel use & emissions.



RCCB Cares WATER

We place a priority on water stewardship and are working to do our part to conserve, restore and replenish our local water supplies. As we look to the future, we are working to build tailored targets that reflect local contexts and needs, aiming to make a greater difference where it matters most. Our water stewardship efforts focus on: Efficiency, Treatment, Assessment and Replenishment.



- Operation Gobble (City of Fresno)
- Food 4 Less Golf Tournament
 - Supporting Central Valley Honor Flight
- **Ronald McDonald House**
 - Kids & Clays
 - From Our House to Yours Telethon
- Happy Hearts Golf Tournament
 - Supporting Valley Children's Hospital

- **Boys and Girls Club of Fresno**
- Buck Rock Foundation
- Caltrans Annual Diversity & Awareness Event
- **Fresno City College Ram Pantry**
- **Fresno Rescue Mission**
- Project Impact
- Sunset Elementary School Carnival





RCCB *Reyes*
FUEL & EMISSIONS



ZEVS

- Automobile Chargers (12) - 2024
- Service Vehicles / Vans (14) - 2024
- Straight Trucks (3) – 2024
- Tractors (36) – Phased Approach
 - ✓ 2027: 25% tractor-trailer fleet
 - ✓ 2030: 50% tractor-trailer fleet
 - ✓ 2033: 75% tractor-trailer fleet
 - ✓ 2036: 100% tractor-trailer fleet





RCRB *Cares*
FUEL & EMISSIONS



Idling Initiatives

TURN THE KEY, BE IDLE FREE!

HELP US WORK FOR A
GREENER TOMORROW
BY **REDUCING**
ENGINE IDLING TIME



REYES *Cares*
FUEL & EMISSIONS

REYES FAMILY OF BUSINESSES



DID YOU KNOW:

if every driver
reduced idling time by just
5 minutes a day
we'd save:

130,000
gallons of fuel a year

equivalent to...

3.8
MILLION

pounds of
carbon
emissions
burning into
the atmosphere

&

Idling
for just **30 seconds**
wastes **MORE FUEL**
than restarting your engine

Learn more and join your facility to



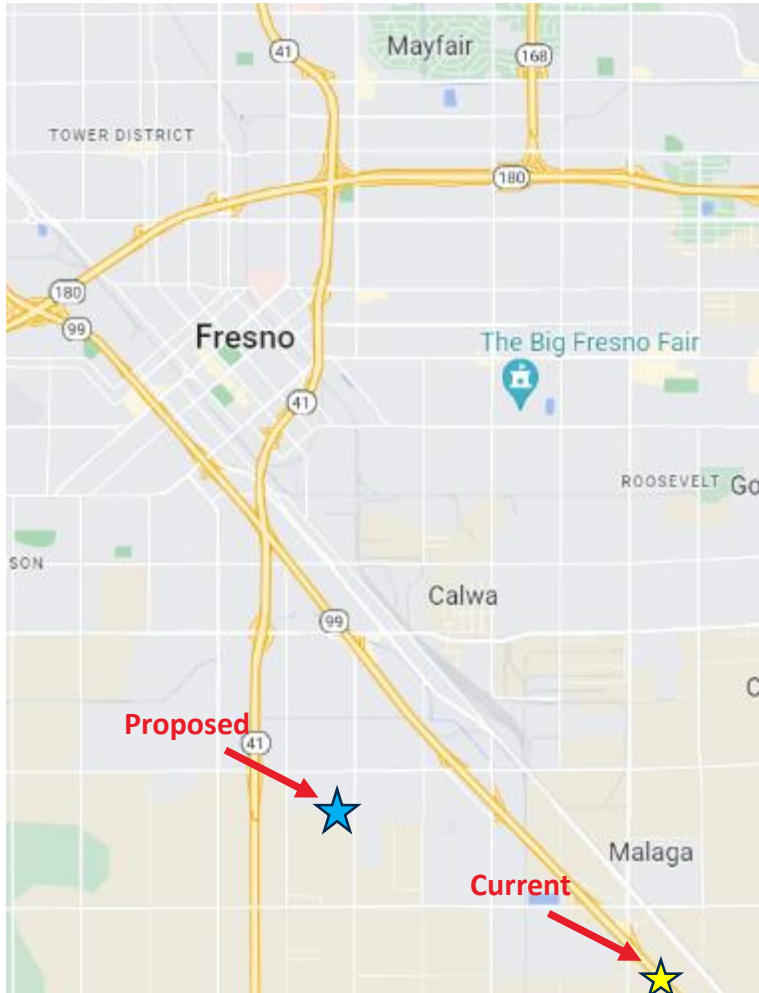
- Initiated October 2021
- Up to 2.6% reduction in fuel / site.

REYES FAMILY OF BUSINESSES



RCCB Malaga

Current Malaga Operations



- Employees: 214
- Size: 65,000 SF; 7.24 acres
- Opportunities:
 - Energy management – Efficiency, Solar, EVs
 - Limited dock positions (4); excessive trailer shuttling
 - Limited vehicle service capabilities
 - Undersized for business volume
 - Limited employee amenities



RCCB Fresno

Proposed New Site Selection

Employees: 285 (w/ Future Growth)

Size: 205,000 SF (with 2nd floor offices); 14.8 acres

- Direct access to Hwy 99 & 41
- Truck Yard - Site Maneuvering for EVs
- Located near similar businesses
- Single building solution



RCCB Fresno

New Site Benefits

- Industry Best Practices on Layout & Design
- Provide community...
 - Visually appealing building and landscaping
 - Location for future bus stop on East Avenue
 - Improved street lighting
 - Great employment / training opportunities
 - Ongoing community partnership

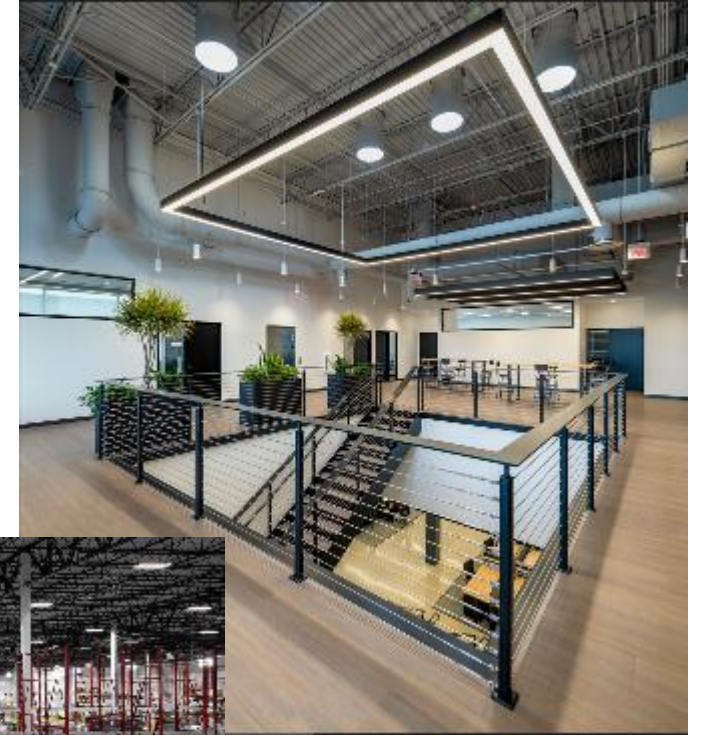


RCCB Fresno



Modernized Operations

- Employee Amenities: EV Parking, bicycle storage, employee hospitality area, outdoor amenities, training center, conditioned warehouse
- Operations: 100% electric MHE equipment, EV chargers for service vehicles and vans, demand response, higher storage heights
- Solar: 560 kW PV System; Offset >90% of the energy usage
- Sustainable Construction:
 - Reduced Heat Island Impact
 - Roof & Pavement
 - Water Use and Reduction
 - Plumbing Fixtures & Landscaping
 - Energy Use and Reduction
 - Solar
 - Efficient HVAC + Lighting
 - Material Use and Enhancement
 - Wellness



RCCB Fresno



Sustainable Construction: RH integrative process for sustainable new construction: design impact, construction impact, operations impact

- Native and drought-resistant plantings; outdoor water usage 77% lower than LEED baseline
- Low-flow fixtures (faucets, toilets, urinals)
- Efficient lighting, HVAC, controls and daylighting
- Building commissioning; focus on air quality, occupant comfort, efficiency; iterative process
- Minimum 75% of construction debris recycled; IAQ plan for construction
- Regional and recycled construction materials and finishes
- Material collection/recycling for stretch wrap, cardboard, mixed use; 100% landfill diversion by 2030 company-wide; 100% of packaging recyclable by 2025 company-wide



RCCB Commitment to Fresno Community

1. Dedicated truck routes
 - Minimal disruption to residential neighborhoods
 - Trucks will no longer need to use Central Ave to get on/off the freeway; utilize North Ave
2. Dedicated rideshare parking
3. Indoor & outdoor amenity spaces for employees
4. Truck and equipment idling programs – Construction; On-going Operations

ZEV Plan

- EV chargers for automobiles
 - 100% material handling equipment
 - 100% service vehicles and vans
 - Phased approach for tractors
5. Sustainability – Renewable energy commitment
 6. Community Outreach
 - Continued commitment to support Fresno initiatives
 - Investment in Community Benefit Fund

Appendix

