

## Regular Meeting

# Parks, Recreation, and Art Commission



## Information Packet

### ITEM(S)

#### 11-A 21-814

Discussion-Parks Identification of Projects and Priorities Process (WRT)

**Contents of Supplement:** Fresno Measure P Implementation Presentation, and Fresno Measure P Implementation Highest Needs Neighborhood Presentation, Received 10/30/2021

### Item(s)

#### **Supplemental Information:**

Any agenda related public documents received and distributed to a majority of the City Council after the Agenda Packet is printed are included in Supplemental Packets. Supplemental Packets are produced as needed. The Supplemental Packet is available for public inspection in the City Clerk's Office, 2600 Fresno Street, during normal business hours (main location pursuant to the Brown Act, G.C. 54957.5(2)). In addition, Supplemental Packets are available for public review at the City Council meeting in the City Council Chambers, 2600 Fresno Street. Supplemental Packets are also available on-line on the City Clerk's website.

#### **Americans with Disabilities Act (ADA):**

The meeting room is accessible to the physically disabled, and the services of a translator can be made available. Requests for additional accommodations for the disabled, sign language interpreters, assistive listening devices, or translators should be made one week prior to the meeting. Please call City Clerk's Office at 621-7650. Please keep the doorways, aisles and wheelchair seating areas open and accessible. If you need assistance with seating because of a disability, please see Security.



# FRESNO MEASURE P IMPLEMENTATION

Parks, Recreation & Arts Commission

November 1, 2021

Park Conditions & Needs





# Measure P Prioritization Process



# Agenda



- **Fresno Parks Master Plan Overview**
- **Park Conditions**
- **Improvement Priorities**
- **Outcomes**
- **Discussion**





# FRESNO PARKS MASTER PLAN

Adopted by City Council January 2018

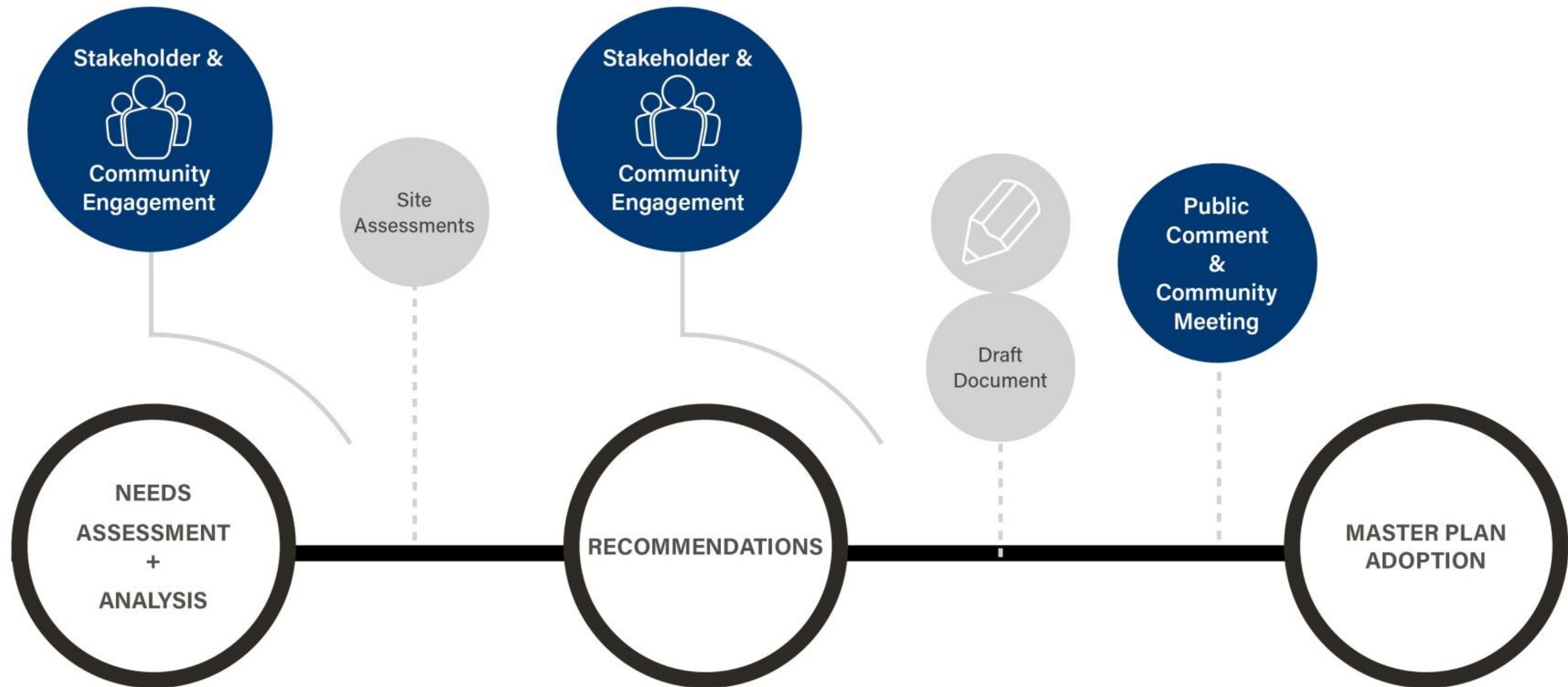


# Why was the Plan Launched?

- **Planning tool for parks**
- **Last parks master plan = 1989**
- **Growing population, changing city**
- **Current park conditions**



# Process & Engagement





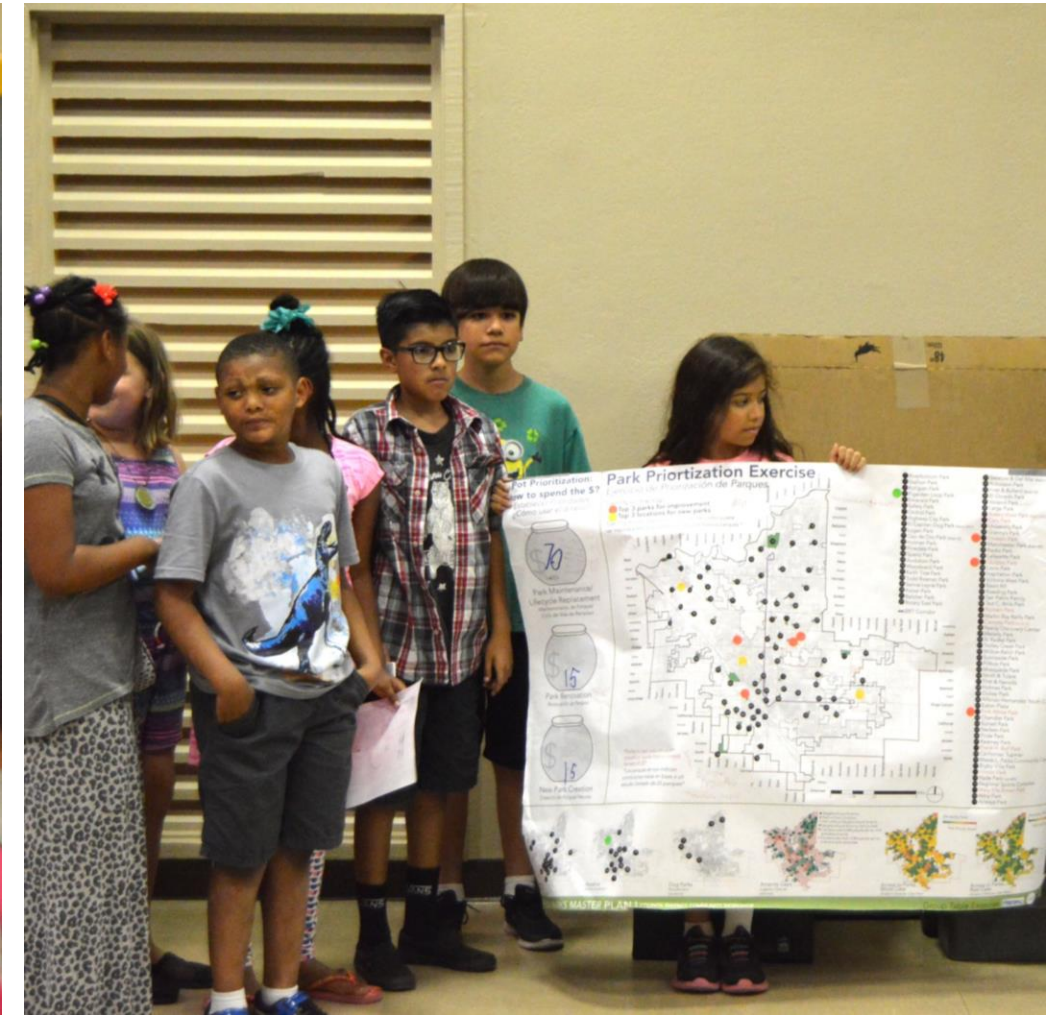
# Process & Engagement



**Stakeholders**



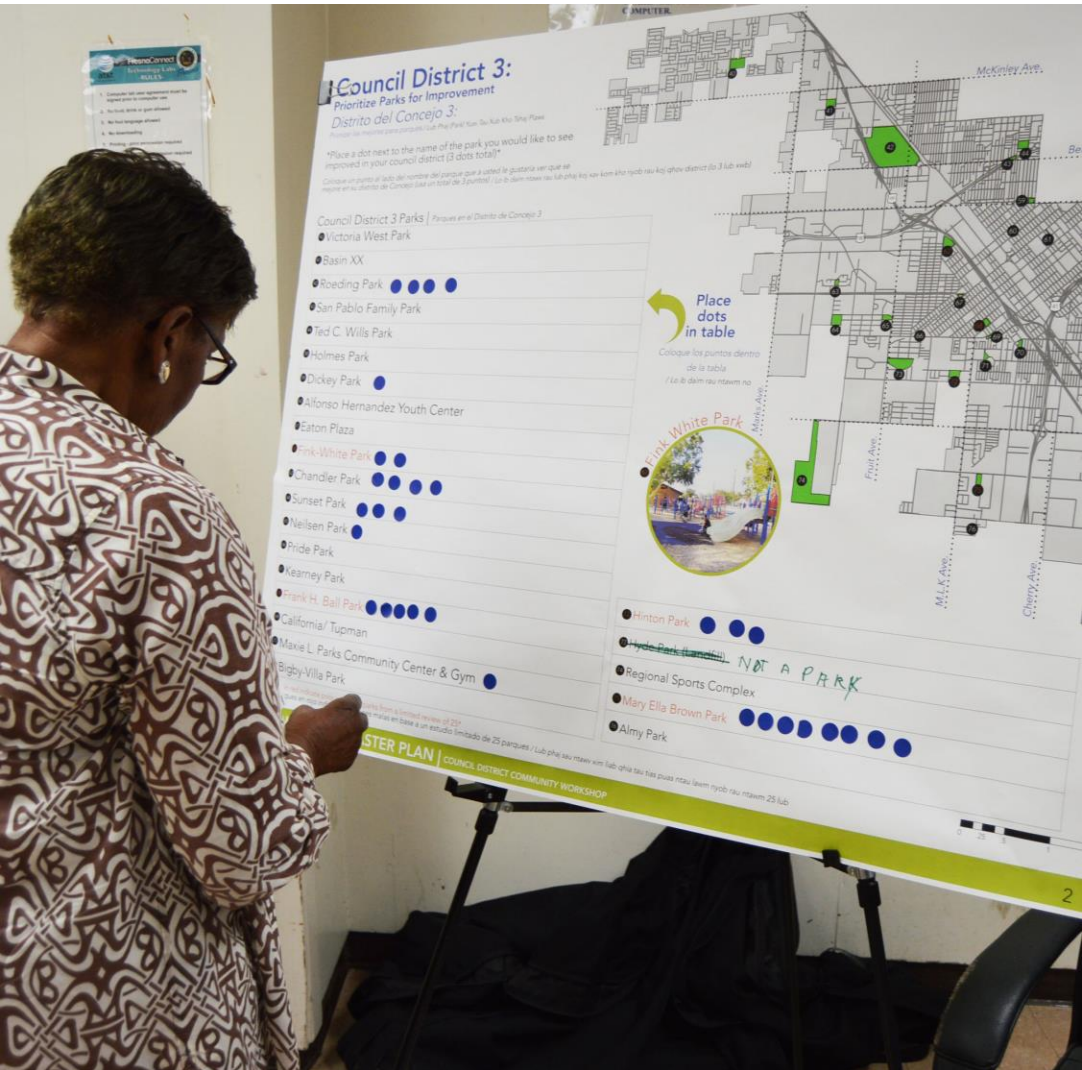
**Workshops**



**Community**



# Process & Engagement



*"A SPECIAL PLACE  
THAT INVITES  
OUR DIVERSE  
COMMUNITY +  
NEIGHBORHOODS  
TO GATHER AND  
ENJOY EACH  
OTHER."*

*- Community comment in  
response to "Tell us about  
Your Ideal Park"*

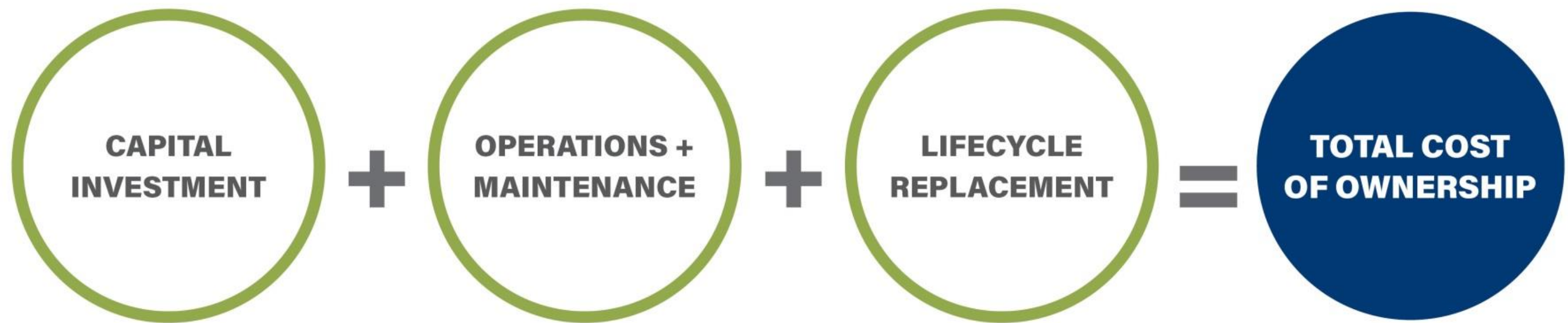


# Assessment & Findings / How are we doing

- Finances & Operations
- Park Conditions
- Park Acreage
- Gaps / Access – *quality & quantity*



# Assessment & Findings / Finances & Operations

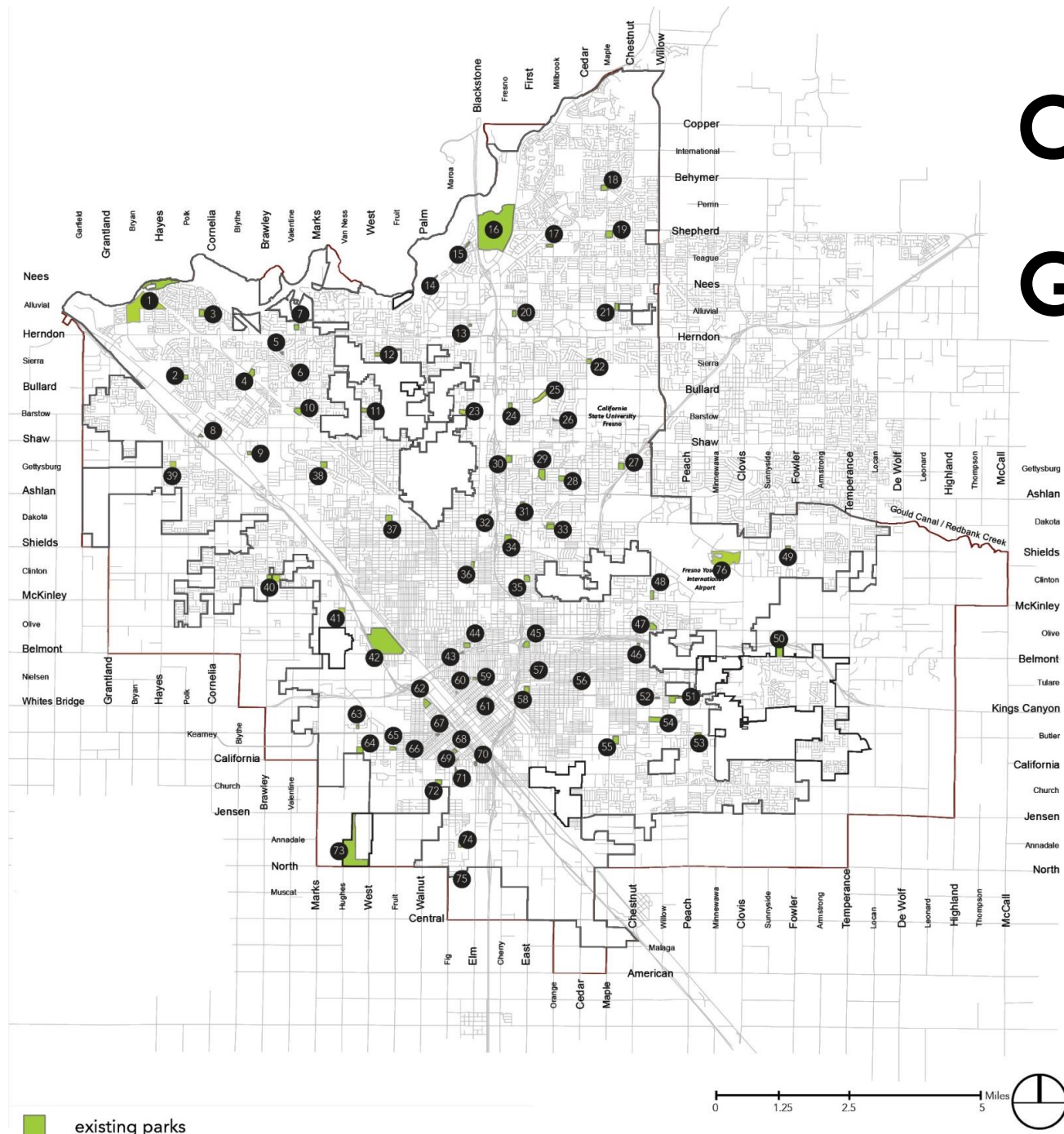


# Assessment & Findings / Finances & Operations

- **PARCS: Operates as best they can with limited resources**
- **Maintenance: \$5 million more needed annually**
- **Lifecycle Replacement: \$112 million currently needed**
  - **\$17 million annual increase needed**



# Assessment & Findings / Park Acreage



## City of Fresno Park Land & General Plan Level of Service Goals

**1,023 acres** (existing)

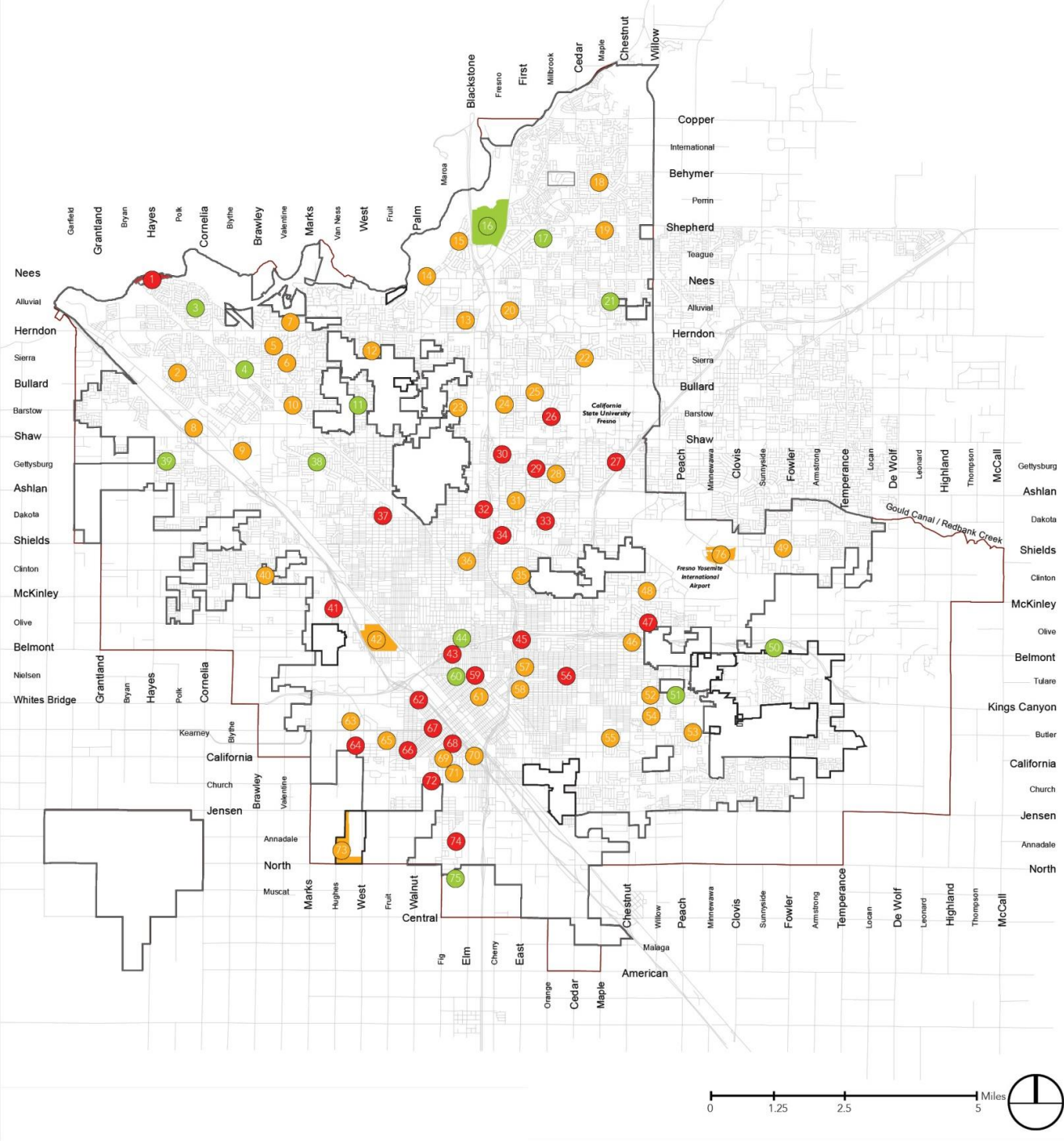
**+1,113 acres** (2017 need)

**+1,769 acres** (2035 need)

**Note: An extra \$10,000 - \$15,000 for maintenance costs is needed for each acre added**

# Assessment & Findings / Park Conditions

20% Good  
50% Fair  
30% Poor





# Assessment & Findings / Park Conditions

Quigley Park

What do we mean when we say "Poor" Condition?

- Deteriorated paving
- Inoperable irrigation
- Broken furnishings/lighting
- Outdated recreational features
- Fencing and access constraints



Carozza Park

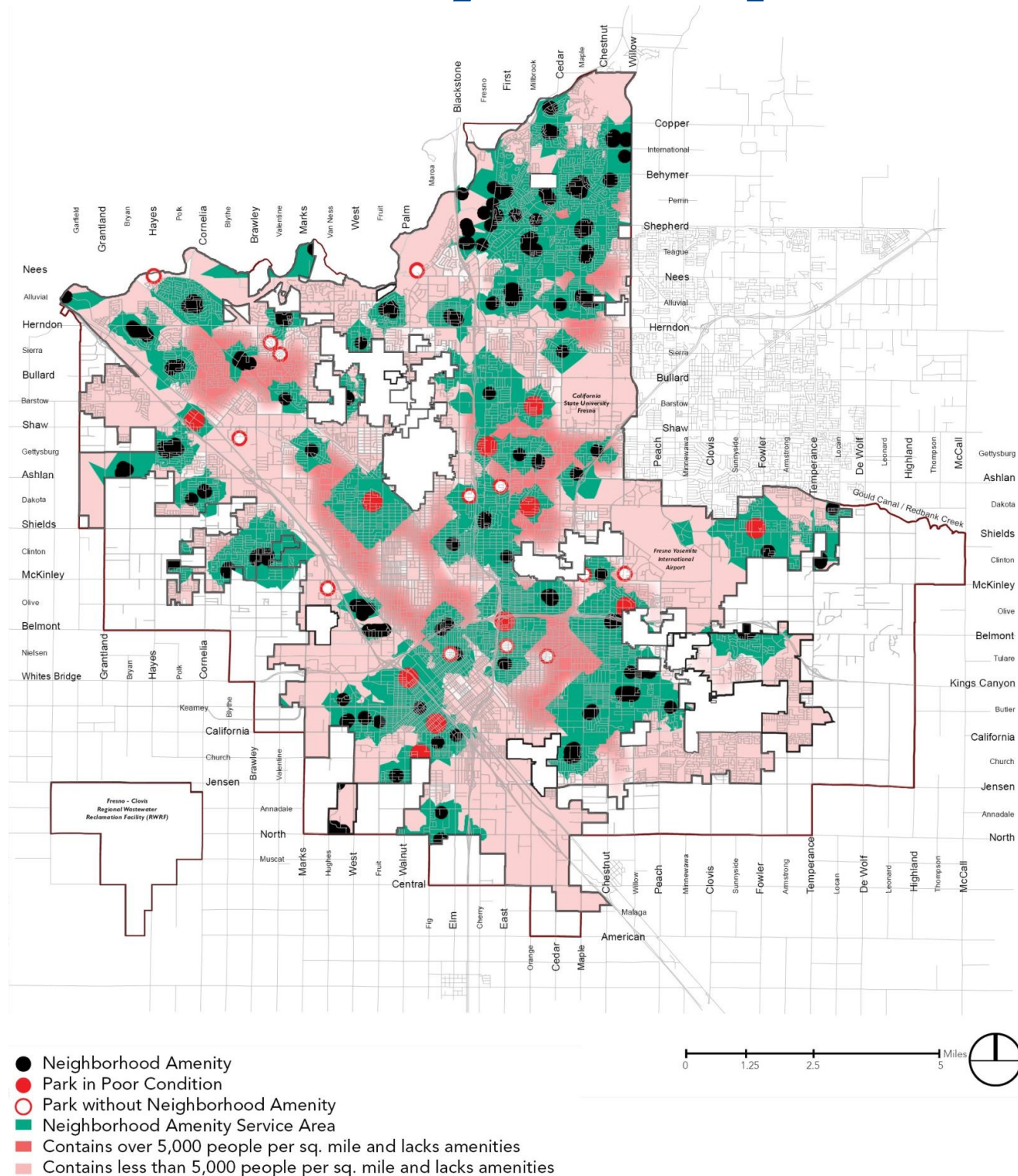




# Assessment & Findings / Amenity Gaps

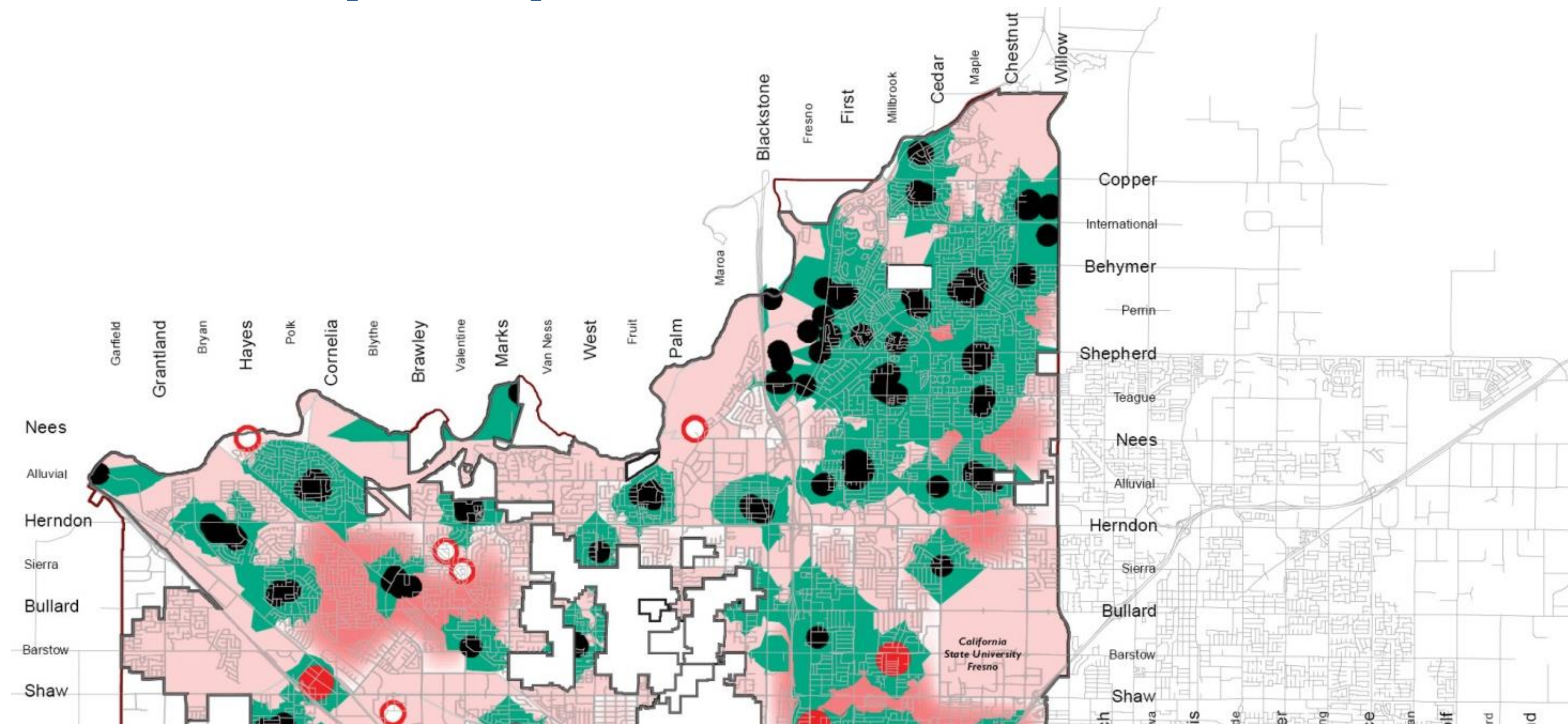
## Neighborhood Amenity Gaps

- Park conditions
- 10-minute walksheds – and "park deserts"



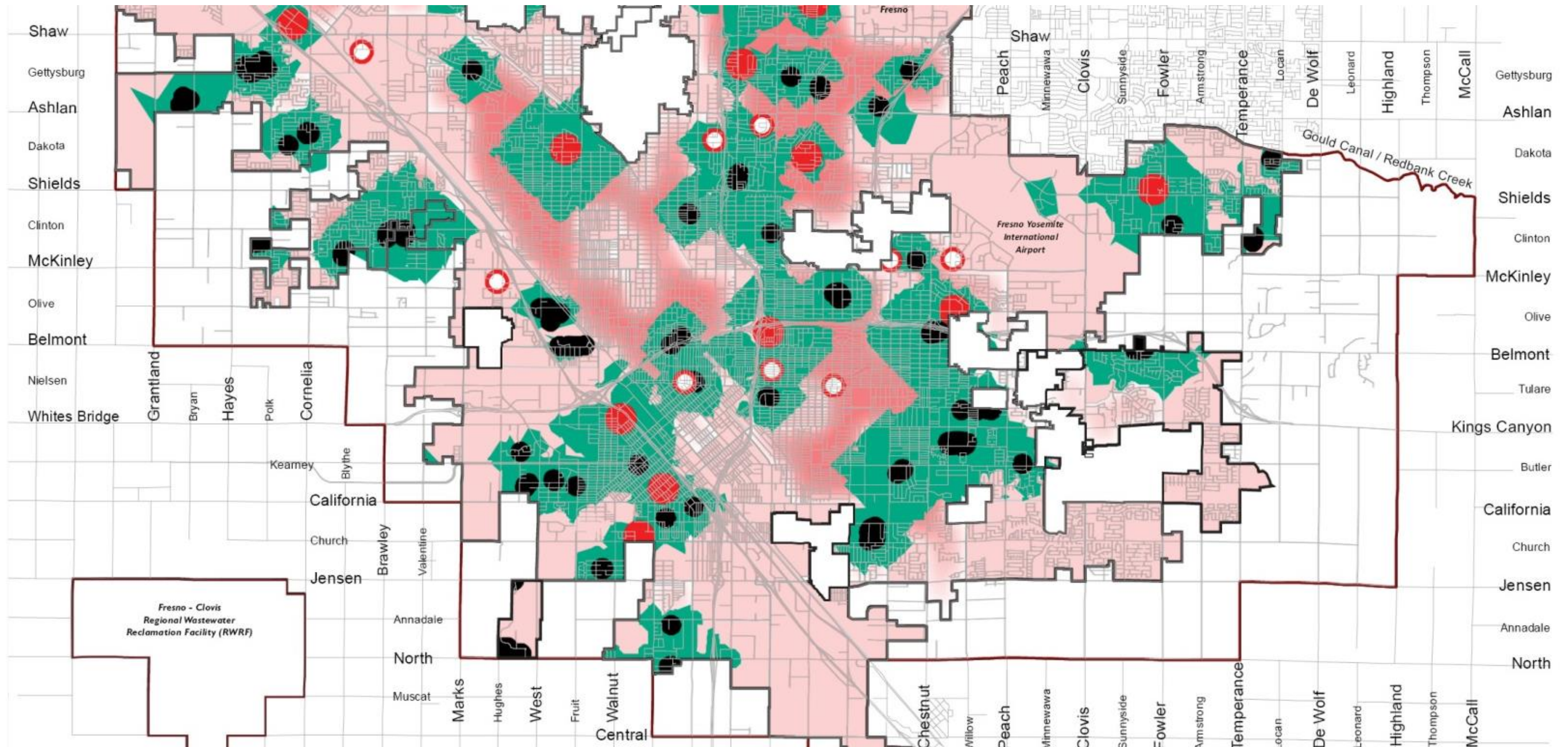


# Assessment & Findings / Amenity Gaps





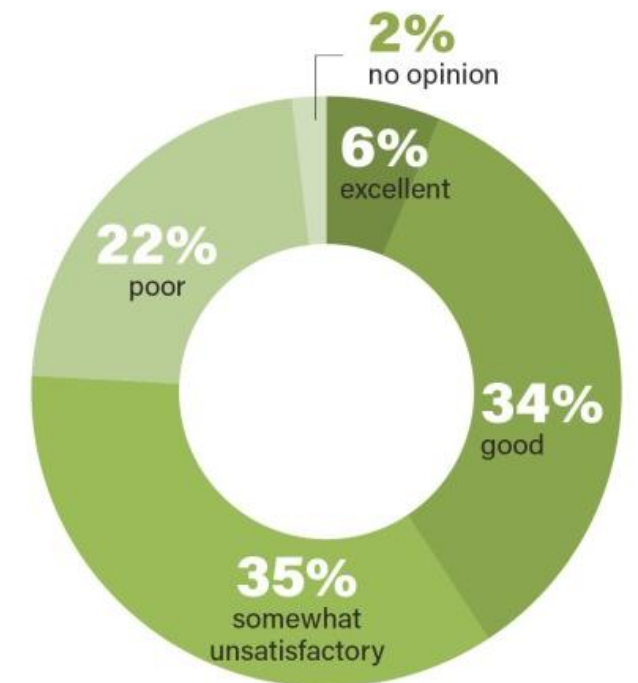
# Assessment & Findings / Amenity Gaps





# Assessment & Findings / Community Priorities

PARKS & AMENITY RATINGS (SURVEY)



TOP PARK PROGRAMS



junior giants  
youth program



youth  
sports



after school  
programs

HIGHEST DEMAND FOR RECREATION FACILITY



**52%**  
picnic areas



**43%**  
community  
gardens



**41%**  
dog park



**37%**  
soccer  
field



**36%**  
splashpad



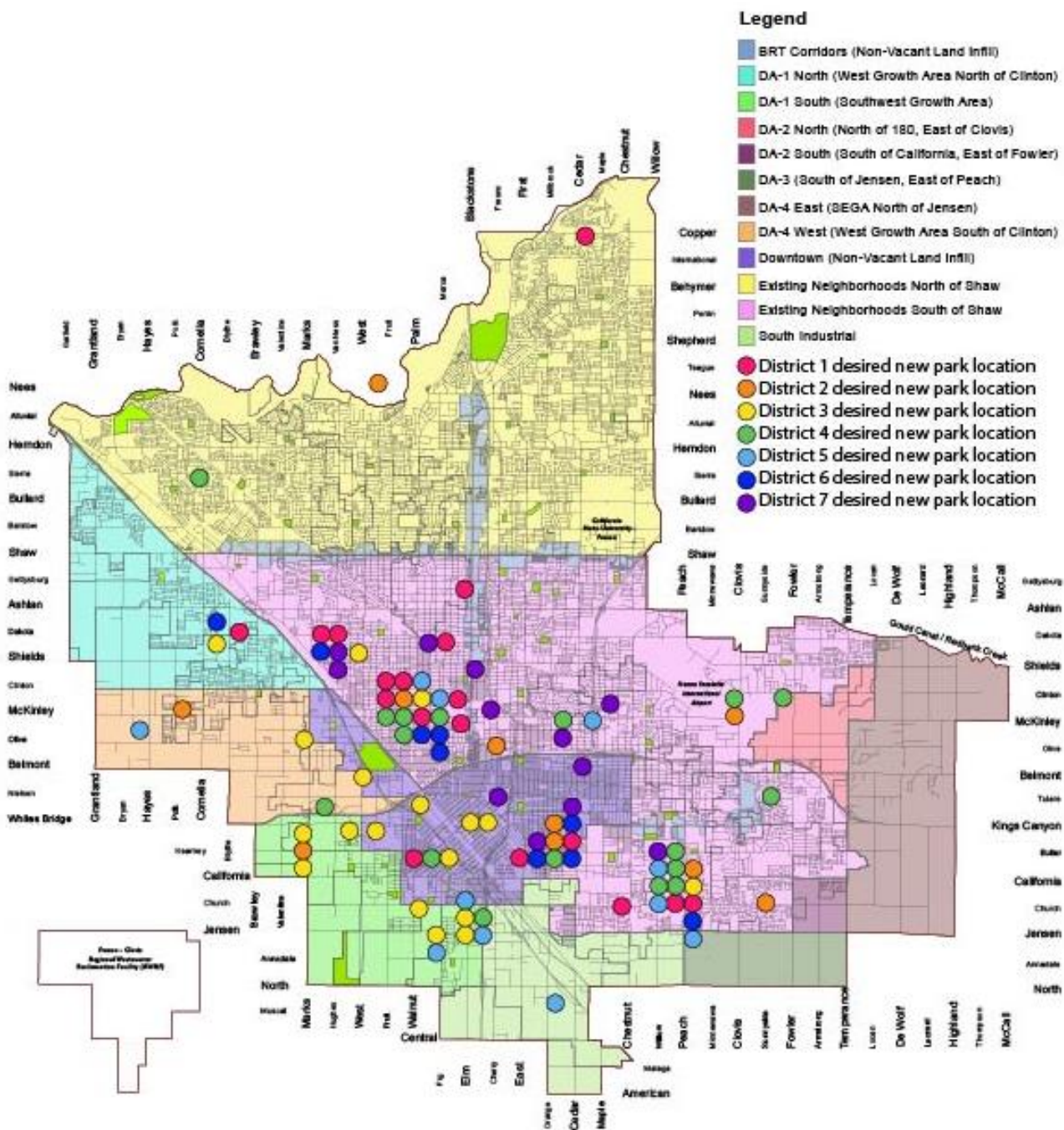
# Assessment & Findings / Community Priorities

Parks Are *Highly* Valued



**52%** *of those surveyed*  
*are willing to* **support**  
*an increase in public*  
**funding for parks**

# Assessment & Findings / Community Priorities



COUNCIL DISTRICT	Maintain	Renovate	New	Ranking: District Parks To Be Improved	Highest Rank: Urban Greening Strategy	District Specific Comment Themes
1	\$58	\$23	\$18	Roeding (4 votes) Quigley (3 votes) Fink White (2 votes) Romain (2 votes)	New Parks & Open Space	Land along canals should be used for parks and trails
2	\$62	\$28	\$10	Quigley (3 votes) Fink-White (1 vote) Mary Ella Brown (1 vote) Einstein (1 vote) Frank H Ball (1 vote) Hyde Park (1 vote) Mosqueda (1 vote)	Tree Canopy	SW Fresno is in great need of park amenities / Walkability & Bikeability along trail & canal systems
3	\$33	\$31	\$36	Hinton (4 votes) Frank H Ball (4 votes) Mary Ella Brown (3 votes)	New Parks & Open Space	SW Fresno is in great need of park amenities / Shade elements / Accessibility
4	\$55	\$22	\$23	Quigley (3 votes) Einstein (2 votes) Romain (2 votes) Mary Ella Brown (2 votes) Logan (1 vote) El Dorado (1 vote) Melody (1 vote) Cary (1 vote) Hinton (1 vote) Large (1 vote) Fink-White (1 vote) Vinland (1 vote) Reedy Discovery Center (1 vote)	Urban Agriculture & Community Gardens	Find other sources of funding to improve parks / Transportation & accessibility to parks
5	\$51	\$29	\$20	Quigley (2 votes) Romain (2 votes) Mosqueda (2 votes) Hinton (1 vote) Roeding (1 vote) Mary Ella Brown (1 vote) Cary (1 vote) Ninth & Tulare (1 vote) Holmes (1 vote)	New Parks & Open Space, Urban Agriculture & Community Gardens	49 Acres site for potential park development / Park partnerships & sponsors
6	\$58	\$22	\$20	Roeding (2 votes) Quigley (1 vote) Hinton (1 vote) Romain (1 vote) Rotary West (1 vote) Mary Ella Brown (1 vote) Belcher (1 vote)	Drought Tolerant, Low Maintenance Vegetation	Hyde Park is not a park, it's a landfill / Park proximity to highways / Health concerns / SW & SE Fresno in need of park amenities
7	\$52	\$35	\$13	Einstein (3 votes) Radio (2 votes) Mary Ella Brown (2 votes) Romain (2 votes) Lafayette (1 vote) Frank H Ball (1 vote) Fink-White (1 vote)	Tree Canopy/ Pedestrian & Bicycle Infrastructure/ Technology	Accessibility / Trails / Smart park (technology), Exercise (workout stations, fitness classes) / Park Safety
AVERAGE	\$53	\$27	\$20			

## Council District Workshops Feedback Summary



# Improvement Tiers



# Improvement Tiers - Sample

## Tier 1: Critical

PARK	LIFECYCLE REPLACEMENT ITEMS	ORDER OF MAGNITUDE ESTIMATE	SITE DEVELOPMENT CONSIDERATIONS
Al Radka	1 parking lot, 2 baseball fields (non-lighted), 2 soccer/football combo (lighted), 1 restroom, 1 shade structure, 1 picnic shelter, 1 community building, 2 playgrounds (shaded), 1 bbq, 1 bench, 1 bike rack, 3 drinking fountains, 6 picnic tables, 1 sign (rules & regulations), 1 monument sign, 5 trash receptacles, community garden	\$2,207,075	Consider adding lights to all athletic fields to extend use, see Tier 2
Almy	1 bench, 1 drinking fountain, 1 playground (non-shaded), 1 walking path, 1 sign (rules & regulations), 1 monument sign, 1 trash receptacle	\$113,000	Consider adding shade structure to playground
Audubon/LLMD (Maintain)	No site amenities	\$28,700	
Belcher	1 parking lot, 3 bbq, 1 bench, 1 bike rack, 1 drinking fountain, 8 picnic tables, 1 playground (non-shaded), 1 picnic shelter, 1 restroom, 1 sign (rules & regulations), 1 monument sign, 6 trash receptacles	\$422,700	Consider adding shade structure to playground
Cary	4 baseball fields (non-lighted), 5 bbq, 1 bench, 1 bike rack, 8 bleachers, 3 drinking fountains, 4 picnic tables, 1 playground (non-shaded), 1 restroom, 1 soccer/football combo (non-lighted), 2 tennis courts (lighted), 4 trash receptacles	\$2,439,850	Consider adding lights to all athletic fields to extend use, Consider adding shade structure to playground

## Tier 3: Visionary

PARK	RECOMMENDATION	ORDER OF MAGNITUDE ESTIMATE
Barstow & Del Mar (Basin F)	Re-master plan park Remove park fencing, add playground, add picnic shelters, add perimeter walking path, furnishings	\$2.3M to \$5.5M
Bigby-Villa	Re-master plan park Replace playground, add picnic shelters, add benches	\$1.2M to \$2.9M
California /Tupman	Re-master plan park Add splash pad, add playground, add picnic shelters, new irrigation system and turf	\$470,000 to \$1.1M
Dickey	Re-master plan park Remove surrounding fencing, convert basketball courts to ____, New restroom facility, new splash pad, new playground, add picnic shelters, new irrigation system and turf, add trees	\$1.0M to \$2.4M
Eaton Plaza	Re-master plan park Site needs to reflect a civic image	\$1.4M to \$3.5M

## Tier 2: Strategic

PARK	RECOMMENDED IMPROVEMENTS	BUDGET COST
Al Radka	Add large shade trees	\$5,000
Carozza (Basin G)	Add looped walking path, add benches, add large shade trees, workout stations, paved sport court, path lighting	\$85,000
Einstein	Remove learner pool and replace with splash pad, add picnic shelters with picnic tables, add bbqs, add large shade trees, add community garden, add dog park, add shade, entry plaza	\$750,000
El Capitan	Upgrade area light to LED; add large shade trees, shade structure, dog park, picnic tables	\$75,000
Emerald	Add small playground, 3 benches; add large shade trees	\$125,000



# What can we accomplish in 10 years?

- ✓ **Improve what you have**
- ✓ **Close the gaps**
- ✓ **Secure the parks**

# Strategy: Improve what you have



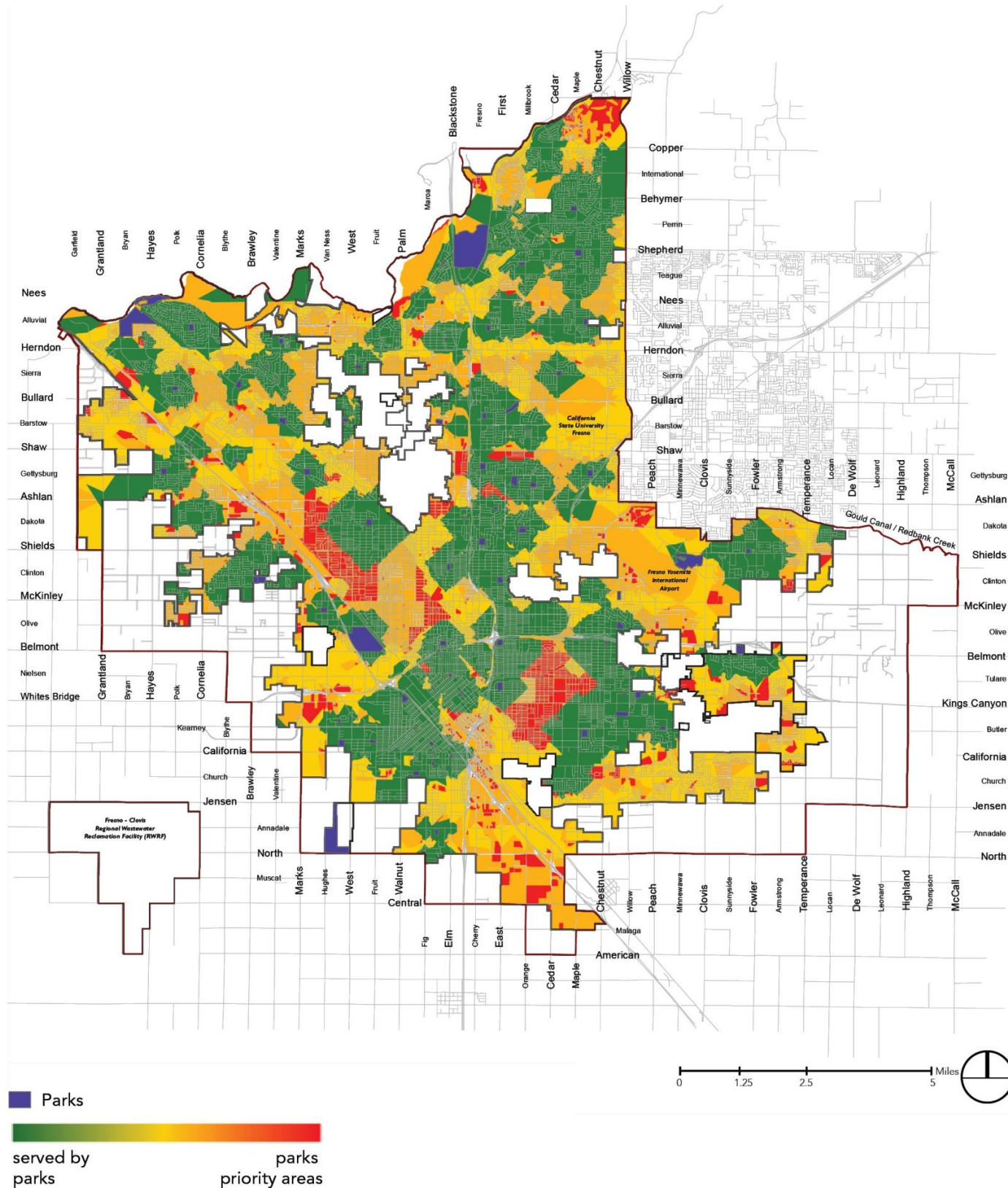


# Strategy: Improve what you have





# Strategy: Close the gaps

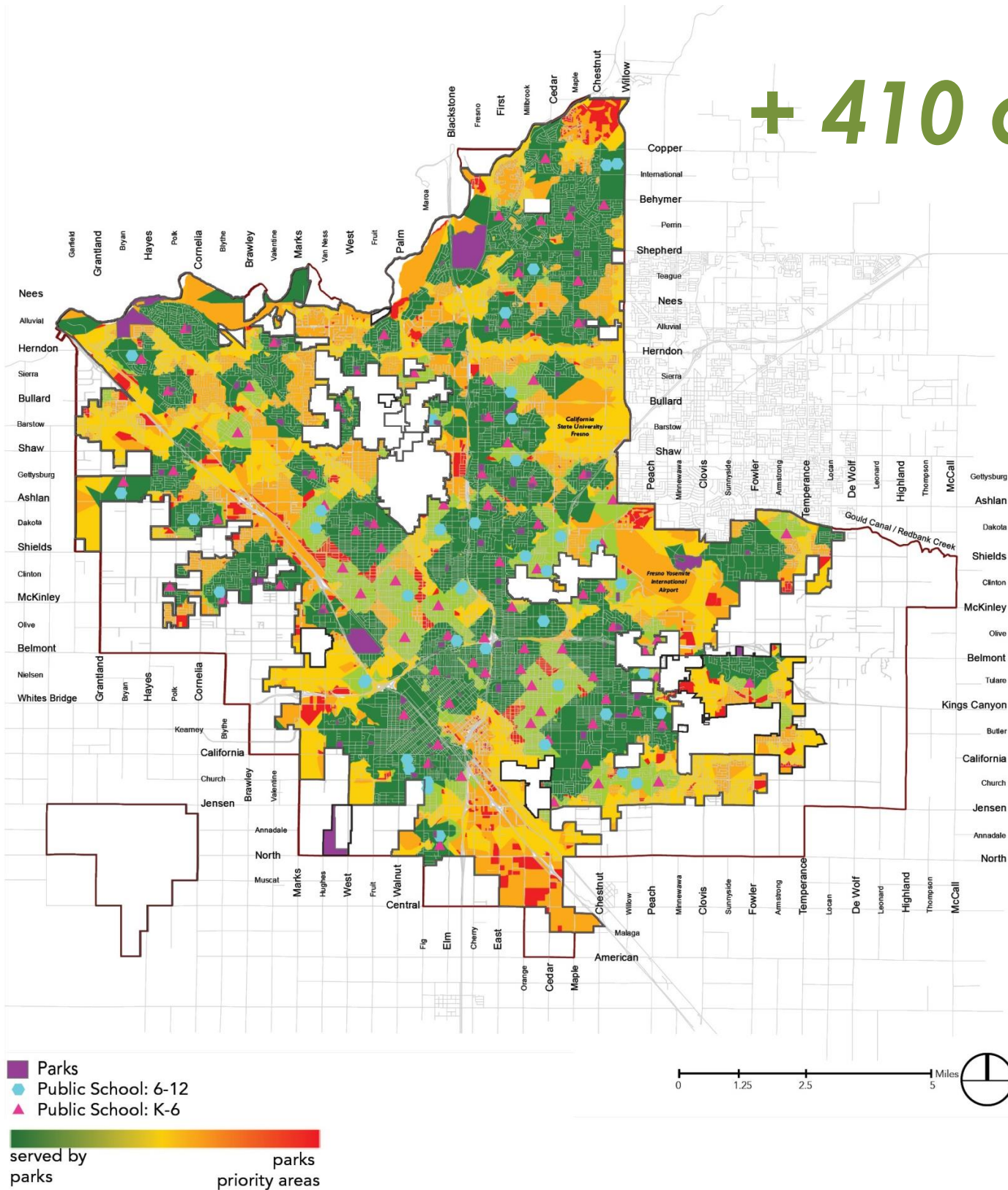


- Target park priority areas
- Expand school & basin joint-use
- Flagship / priority parks
- Urban greening strategies



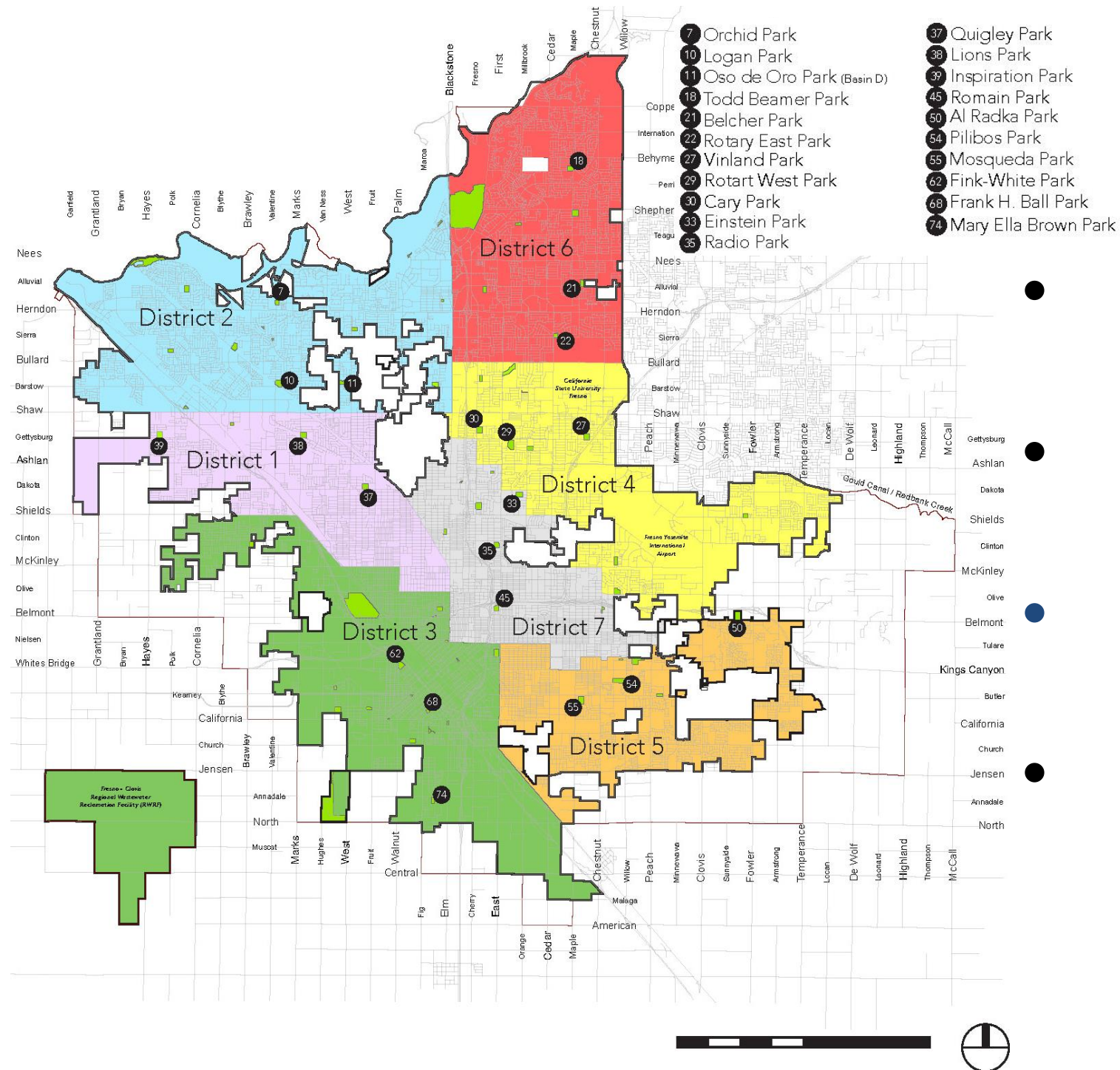
# Strategy: Close the gaps

**+ 410 acres (FUSD)**



- **Target park priority areas**
- **Expand school & basin joint-use**
- **Flagship / priority parks**
- **Urban greening strategies**

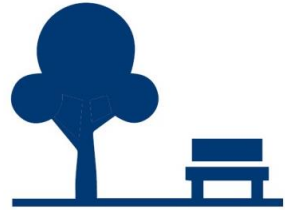
# Strategy: Close the gaps



- Target park priority areas
- Expand school & basin joint-use
- Flagship / priority parks
- Urban greening strategies



# Strategy: Close the gaps



*new parks*



*tree canopy*

*community gardens*

*bicycle*



*pedestrian*

*stormwater*



*beautification*

- Target park priority areas
- Expand school & basin joint-use
- Flagship / priority parks
- Urban **greening** strategies



# Strategy: Secure the parks



**Pop-up Programs**



**Movies in the Park**



# Summary of Priority Parks

## Parks in Poor Condition

- Quigley
- Riverbottom
- Basin XX
- Sunset
- Frank H. Ball
- Hinton
- Fink-White
- Mary Ella Brown
- San Pablo Family
- Dickey
- Pride
- Kearny
- Hyde Park (Landfill)
- El Dorado
- Vinland
- Carozza (Basin G)
- Rotary West (Basin BE)
- Cary
- Manchester (Basin BB)
- Einstein
- Romain
- Granny's
- Ninth & Tulare
- First & Nevada
- Maple & Huntington

## Community Priority Parks

- Logan
- Belcher
- El Dorado
- Rotary West
- Cary
- Quigley
- Large
- Vinland
- Einstein
- Melody
- Reedy
- Discovery Center
- Radio
- Lafayette
- Romain
- Ninth & Tulare
- Mosqueda Community Center
- Holmes
- Eaton Plaza
- Roeding
- Fink-White
- Kearny
- Frank H. Ball
- Hinton
- Mary Ella Brown

## Flagship Parks

- Inspiration
- Quigley
- Lions
- Oso de Oro
- Orchid
- Logan
- Mary Ella Brown
- Fink White
- Frank Ball
- Cary
- Vinland
- Rotary West
- Mosqueda
- Pilobos
- Al Radka
- Todd Beamer
- Rotary East
- Belcher
- Romain
- Radio
- Einstein

\*Highlight indicates parks in all three categories

# Where we are today: Improvements Underway

- **Quigley** (Prop 68 Application, HVAC)
- **Frank H. Ball** (ADA Improv., Technology Improv., Swimming Pool Renovations)
- **Fink-White** (Splash Pad, Cal Fire Tree Planting (15 trees), Learner Pool Health Code Upgrades)
- **Mary Ella Brown** (HVAC, Skate Park, Restroom Remodel, High Speed Internet Upgrade, Cal Fire Tree Planting (10 trees), Bike Park)
- **Vinland** (Lighting, Splash Pad, Pickleball Resurfacing)
- **Cary** (Trees, Lighting, Resurfacing, Park Attendants, Tennis Court Poles/Netting, Tree Planting (10 trees), Restroom)
- **Einstein** (Painting, Learner Pool Health Code Upgrades)
- **Romain** (Challenger Course, Futsal, Basketball, Parking Lot Reconstruction, Skate Park)

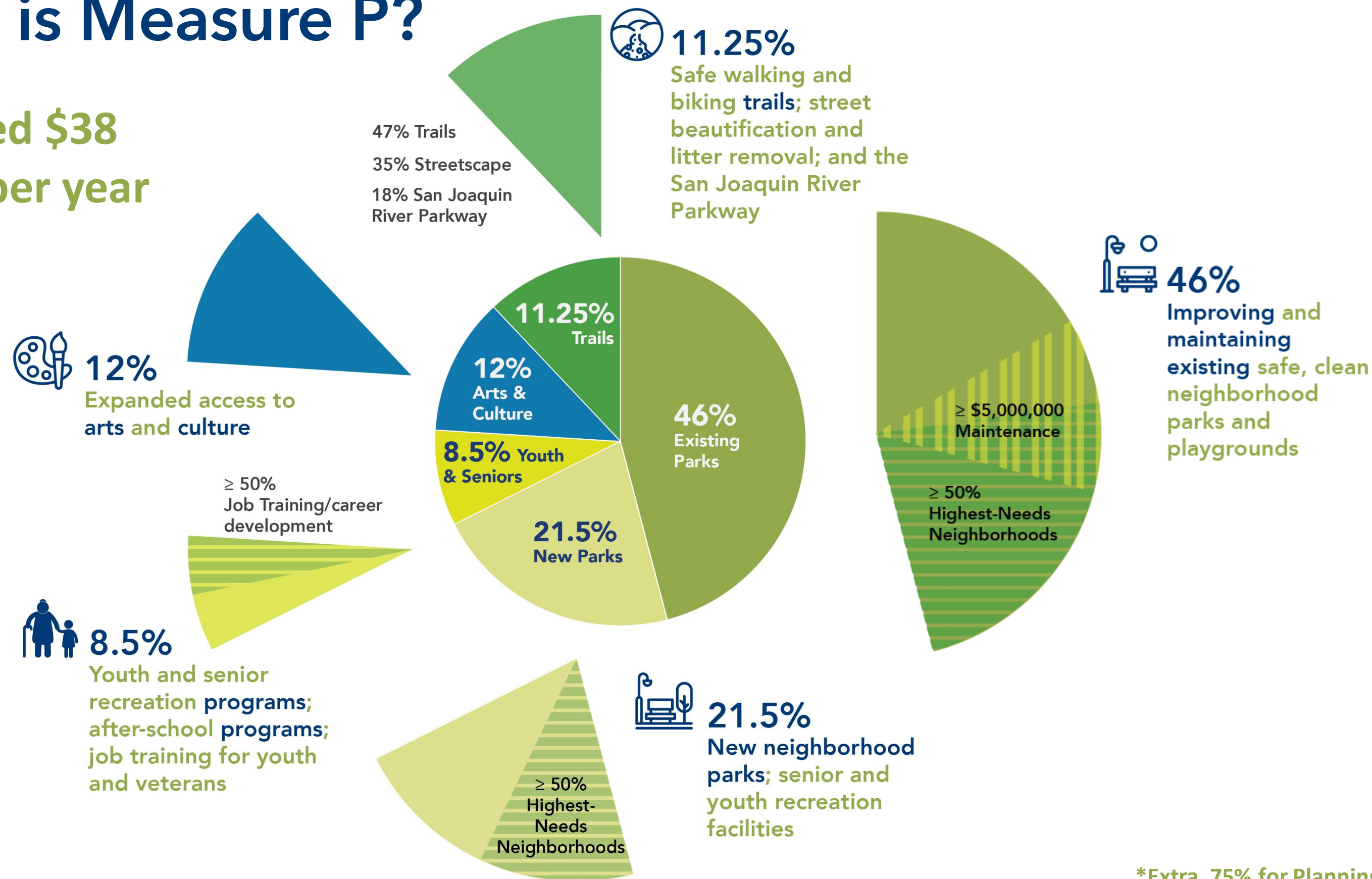


# Where we are today: Parks Budget

Approp Type Name	Expenditure Type G3	2017 Actuals	2018 Actuals	2019 Actuals	2020 Actuals	2021 Actuals	2022 Adopted Budget
<u>170000 - PARCS Department</u>							
Operating		15,898,623	16,844,435	17,827,609	17,097,971	22,155,725	25,520,300
Debt Service		2,071,012	1,902,943	1,822,236	1,821,716	1,821,004	1,826,900
Capital		3,232,540	2,885,274	1,719,341	1,358,497	2,924,377	30,770,900
PARCS Department Total		21,202,175	21,632,651	21,369,186	20,278,185	26,901,106	58,118,100

# What is Measure P?

Estimated \$38 million per year



\*Extra .75% for Planning



# Prioritization Process



# Schedule

