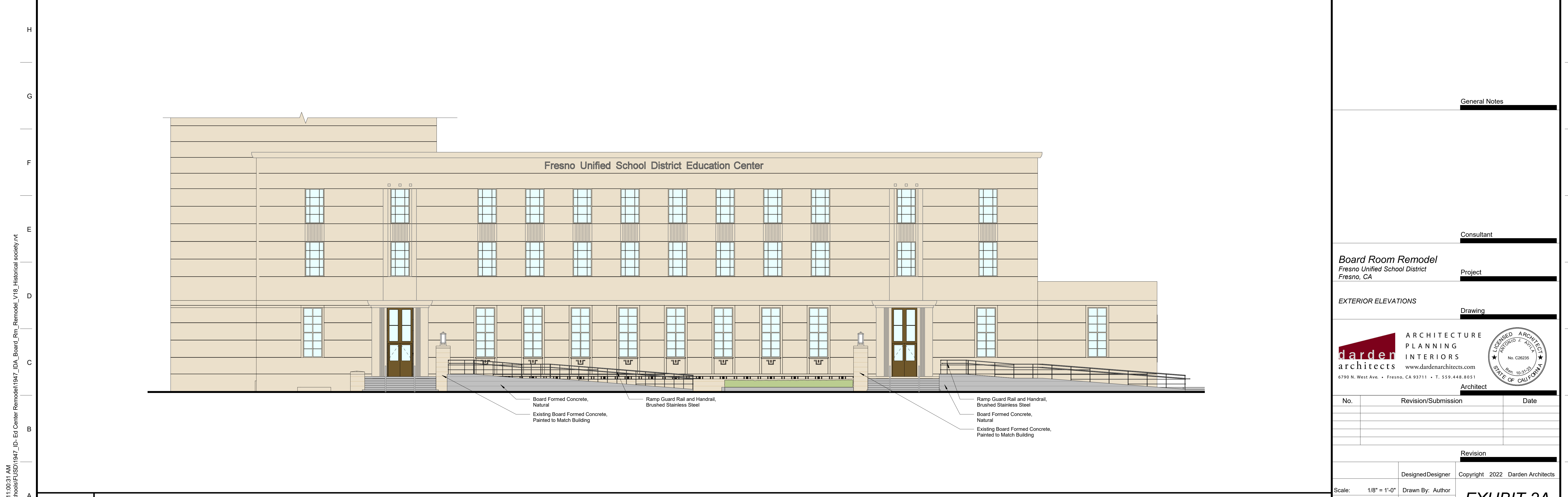


J1
1/8" = 1'-0"
EXTERIOR ELEVATION - Existing
Refer to E7-SDA101



A1
1/8" = 1'-0"
EXTERIOR ELEVATION - Proposed
Refer to A7-SDA101

General Notes

Consultant

Board Room Remodel
Fresno Unified School District
Fresno, CA

Project

EXTERIOR ELEVATIONS

Drawing

Architect

darden architects ARCHITECTURE PLANNING INTERIORS
www.dardenarchitects.com
6790 N. West Ave. • Fresno, CA 93711 • T. 559.448.8051

ARCHITECT
No. C26235
State of California

| No. | Revision/Submission | Date |
|-----|---------------------|------|
| | | |
| | | |
| | | |

Revision

Designed Designer: Copyright 2022 Darden Architects
Scale: 1/8" = 1'-0" Drawn By: Author
Project Number: 1947.IDA Checked: Checker
Date: 8/15/2022 Review: Approver

EXHIBIT 2A

8/31/2022 11:00:31 AM D:\Revit-Schools\FUSD\1947_ID-Ed Center Remodel\1947_IDA_Board_Rm_Remodel_V18_Historical.society.rvt