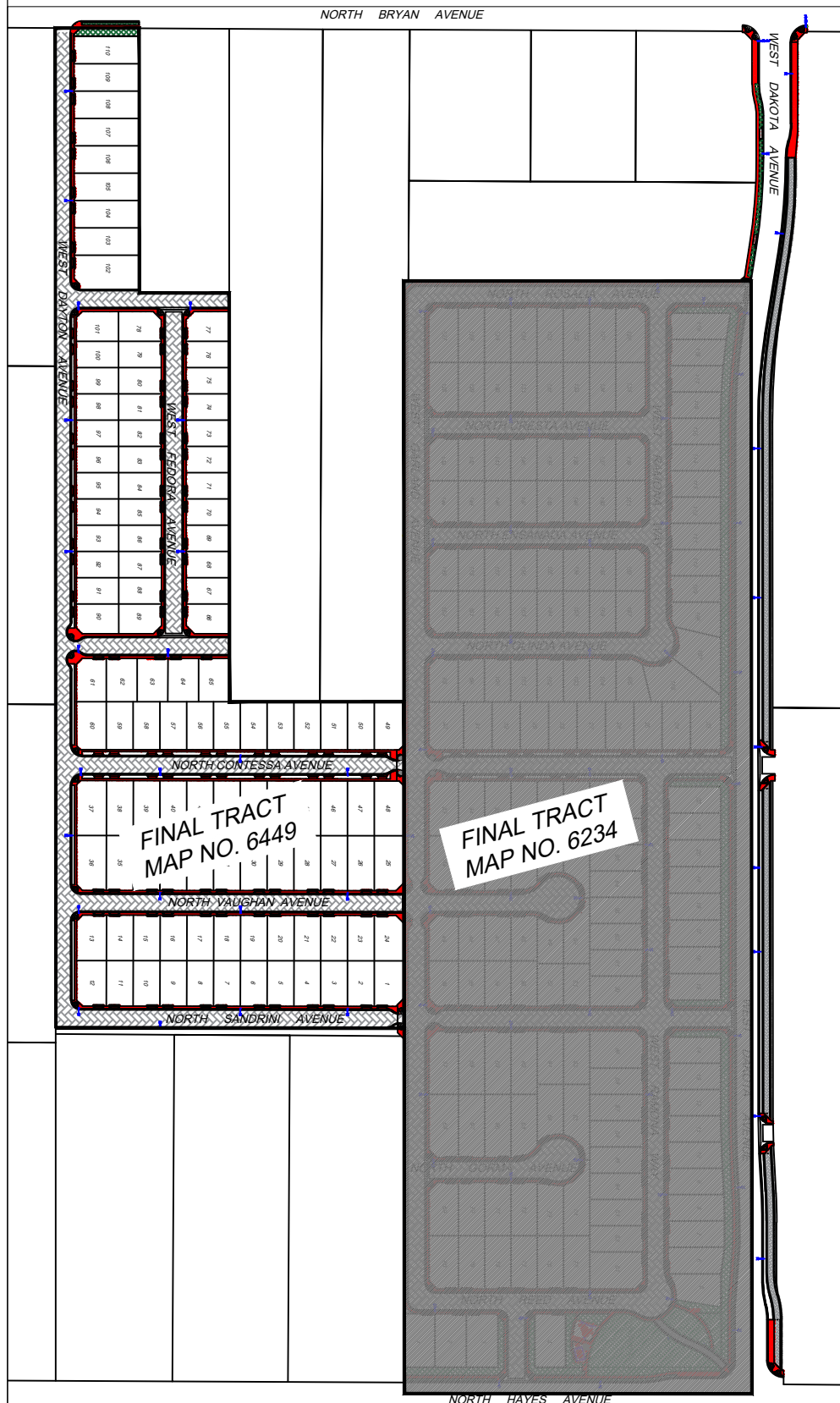


CITY OF  
**FRESNO**  
 PUBLIC WORKS DEPARTMENT  
 LAND PLANNING SECTION  
 FEATURES TO BE ADDED BY ANNEXATION NO. 157  
 COMMUNITY FACILITIES DISTRICT NO. 11

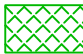
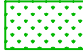


NOT TO SCALE  
 April 15, 2025




FINAL TRACT MAP NO. 6234  
 (PHASE I)  
 AND  
 FINAL TRACT MAP NO. 6449  
 (PHASE III)


LANDSCAPE AND IRRIGATION:

-  BUFFERS/PARKWAYS  
 TREES & SHRUBS = 60,670 SF
-  TURF & BEDS  
 GROUND COVER = 20,551 SF
- SMALL TREES = 85 EACH
- LARGE TREES = 62 EACH

CONCRETE IMPROVEMENTS:

-  CURB & GUTTER = 27,914 LF
- VALLEY GUTTER = 7,589 SF
- SIDEWALK & CURB RAMPS = 155,577 SF

LOCAL STREET PAVEMENT:

-  INTERIOR RESIDENTIAL = 408,996 SF
- TRAIL = 29,055 SF

OUTLOT HARDSCAPE AND AMENITIES:

- \*CONCRETE WALKS & PADS = 2,542 SF
- \*BENCHES = 2 EACH
- \*TABLES = 3 EACH
- \*TRASH RECEPTACLE = 2 EACH
- \*SHADE STRUCTURE = 1 EACH
- \*PLAY STRUCTURE = 1 EACH
- \*WATER FOUNTAIN = 1 EACH
- \*DOG STATION = 1 EACH

LIGHTING:

- STREET = 88 EACH
- TRAIL = 2 EACH

