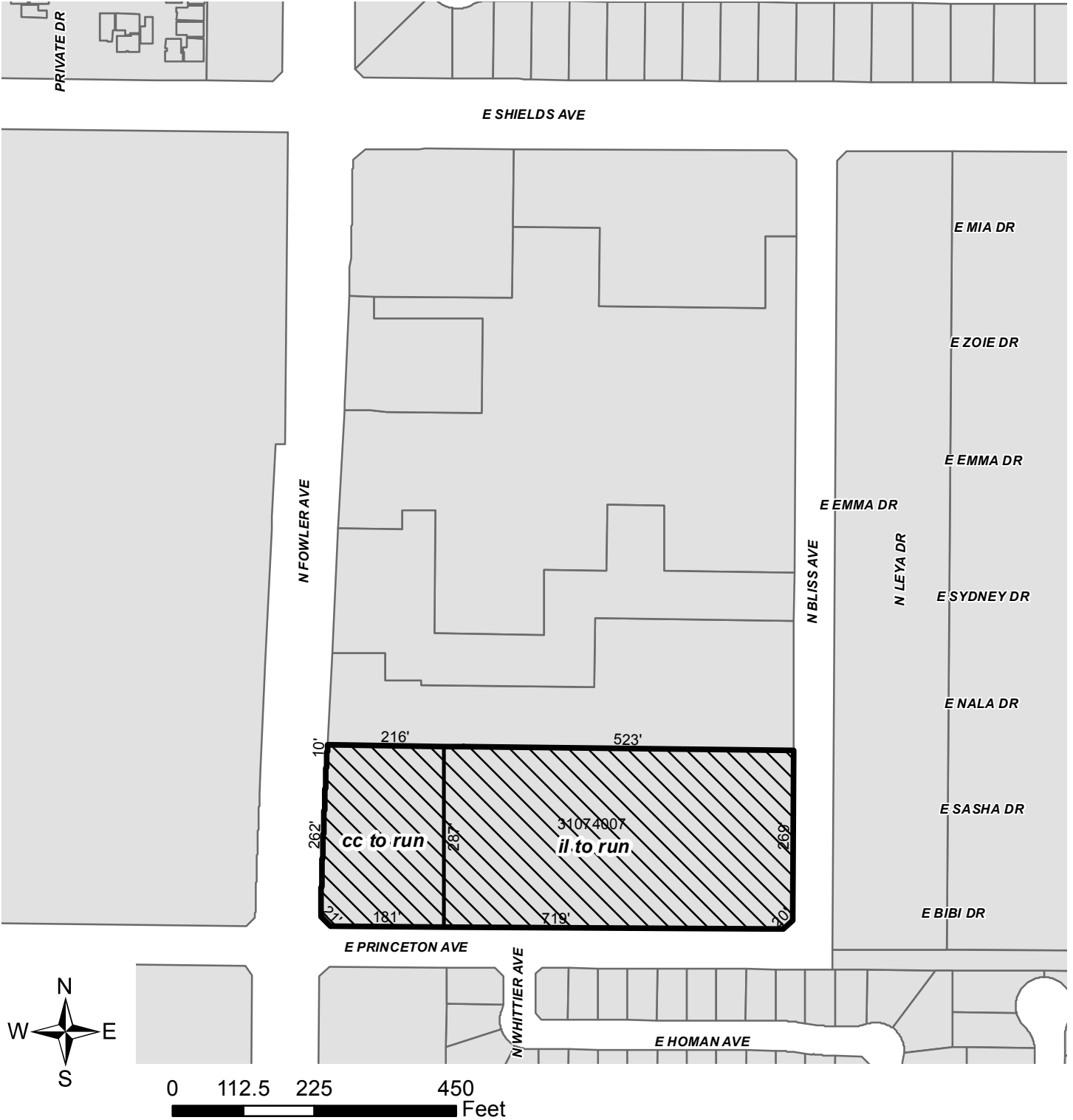



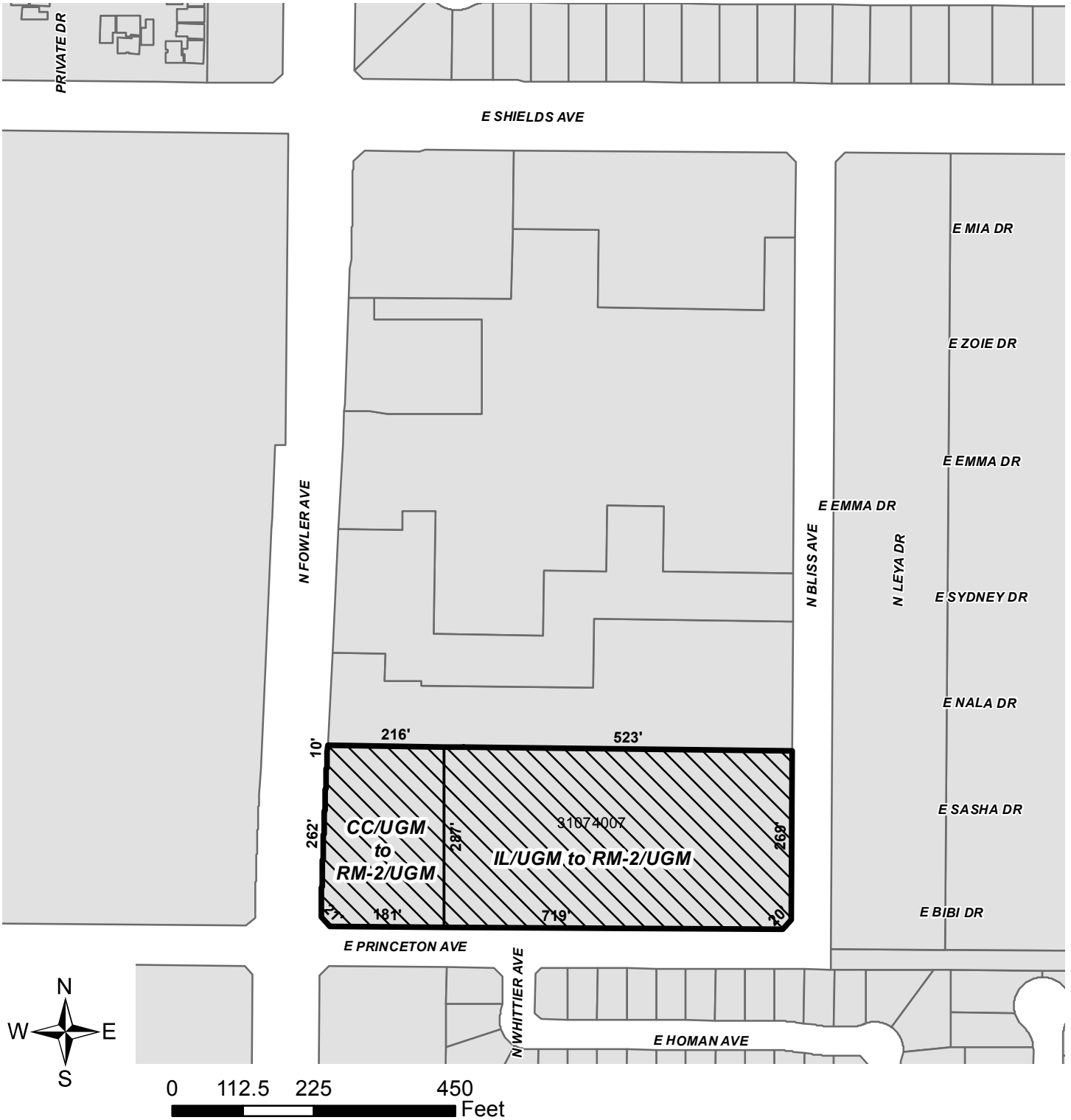
# EXHIBIT B



**A-17-010**  
**APN: 310-740-07**  
**2770 N Fowler Ave**

 From Commercial Community & Light Industrial planned land use to the Urban Neighborhood Residential (16-30 dwelling units/acre) planned land use. - 4.87 Acres

# EXHIBIT B



**R-17-014**  
**APN: 310-740-07**  
**2770 N Fowler Ave**



Proposes to reclassify 4.87 acres of property from the CC/UGM (Community Commercial/Urban Growth Management) and IL/UGM (Light Industrial/Urban Growth Management) zone districts to the RM-2 (Residential Multi-Family, Urban Neighborhood/Urban Growth Management) zone district