



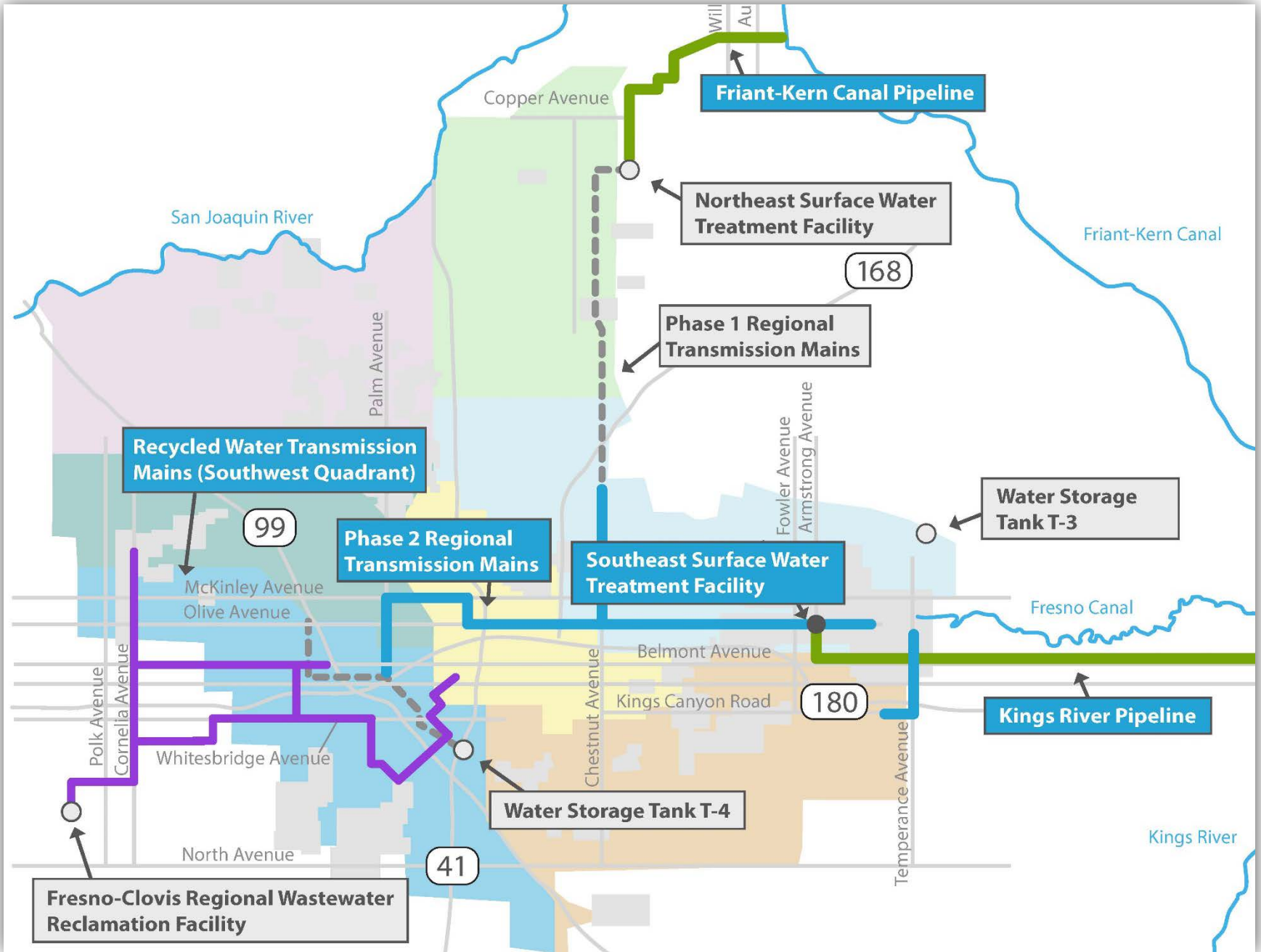
***Recharge Fresno Program
Update and Community
Outreach for Start-up***

ON TIME...ON BUDGET...HIGH QUALITY...SAFE

***Recharge Fresno Program Status
System Start-up and Operation
Community Outreach for Start-up***



DPU Major Projects



Ongoing Large Construction Contracts

Construction Contract	Original Contract	Approved Change	Current Contract	Percent Completion
-----------------------	-------------------	-----------------	------------------	--------------------

Raw Water

Friant-Kern Canal Pipeline	\$ 15,157,862	\$ 803,246	\$ 15,961,108	99%
Kings River Pipeline	\$ 45,583,750	\$ 578,579	\$ 46,162,329	95%

Potable Water

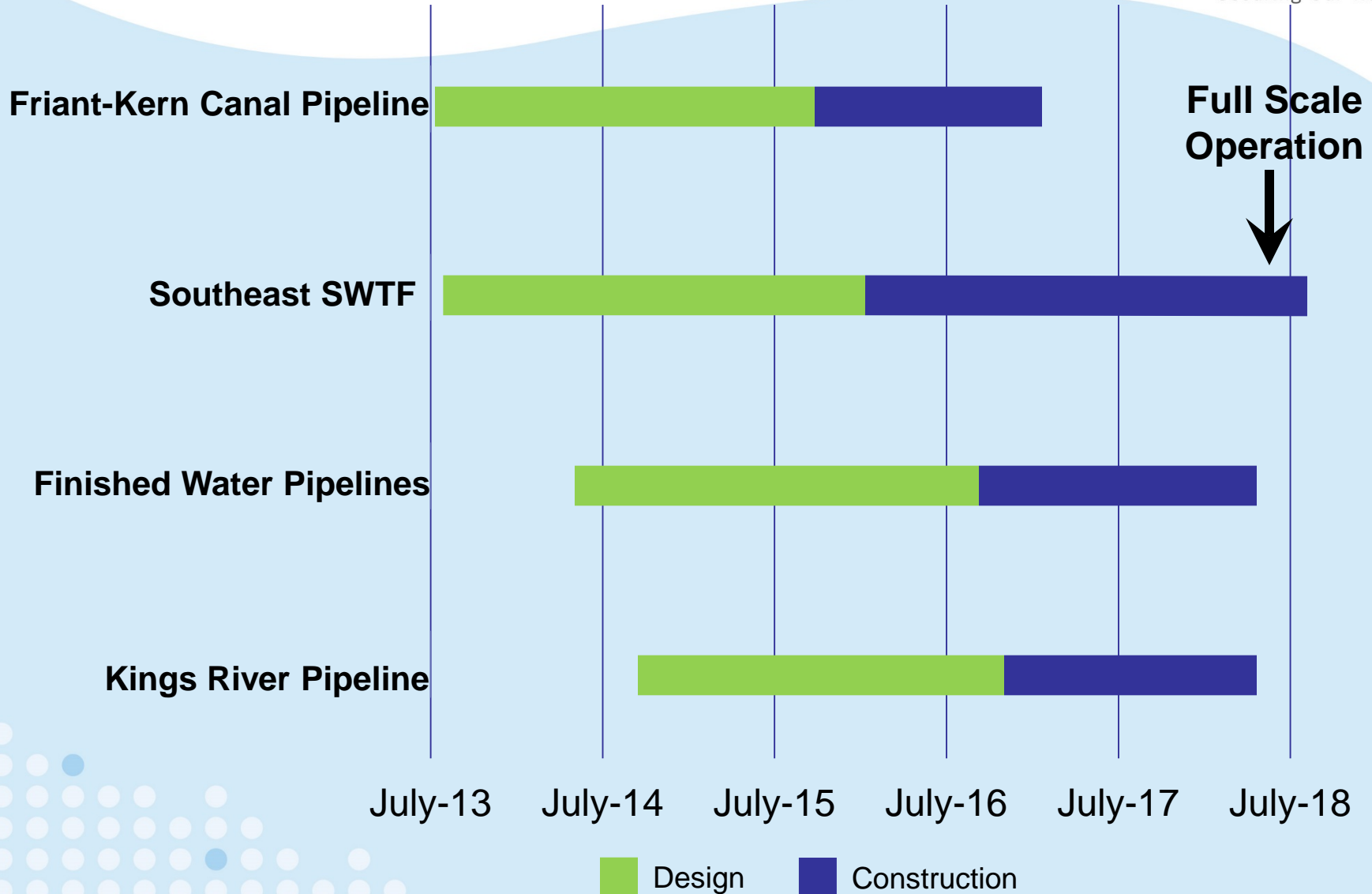
SE Surface Water Treatment Facility	\$158,766,000	\$ 3,697,866	\$162,463,866	88%
RTM Segment A1	\$ 28,471,884	\$ 376,859	\$ 28,848,743	98%
RTM Segment A2	\$ 18,204,180	\$ 335,691	\$ 18,539,871	95%
RTM Segments B&C (pending NTP)	\$ 11,490,484	\$ 0	\$ 0	0%

Recycled Water

SW RWTM Segment SW1B	\$ 9,341,491	\$ 0	\$ 9,341,491	99%
SW RWTM Segment SW1C	\$ 4,198,175	\$ 269,718	\$ 4,467,893	99%
SW RWTM Segment SW1C2	\$ 7,682,290	\$ 0	\$ 7,682,290	15%

Major Project Schedules

(Original Schedule Presented 2/26/2015)



Union and Local Resident Participation

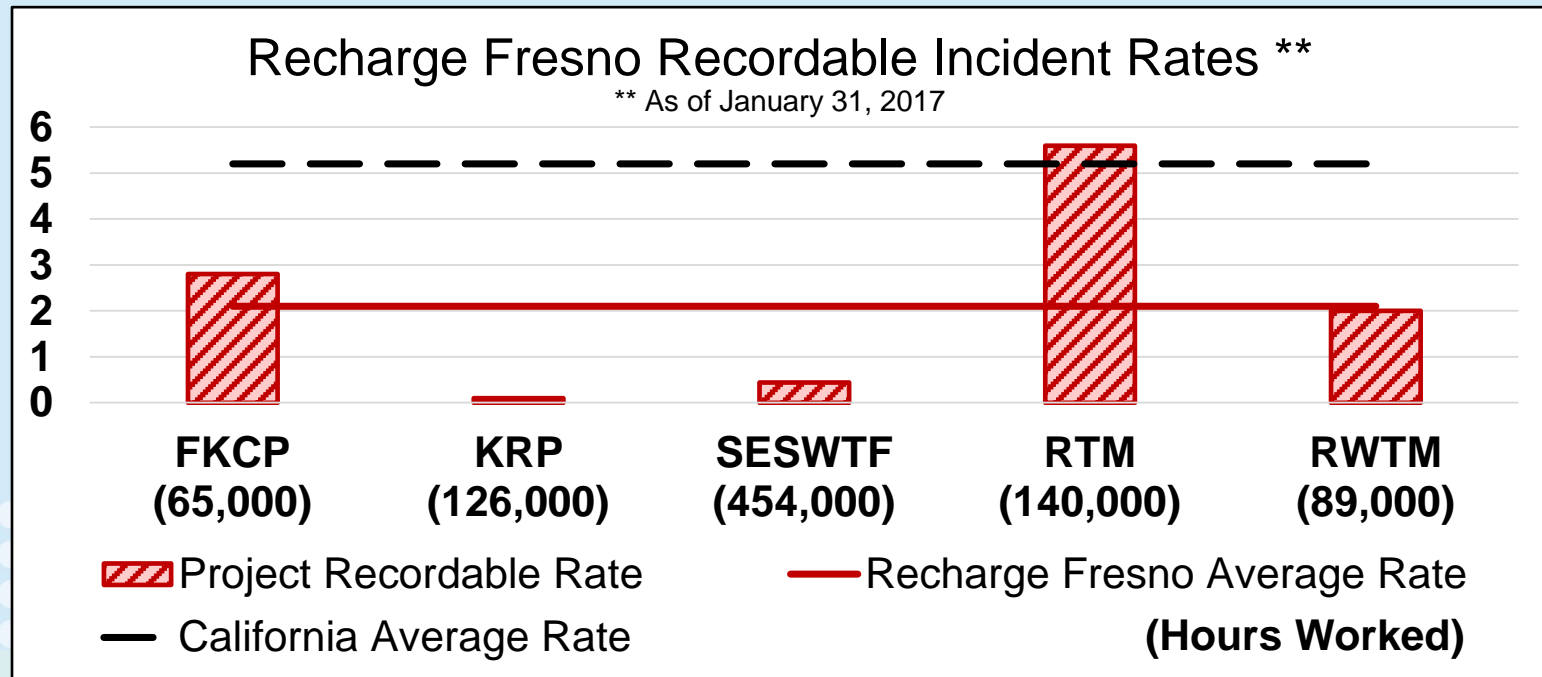
- Monitoring and documentation of workforce statistics related to union affiliation and residency.
- Ten (10) completed and ongoing construction contracts with total construction value of over \$300 million.
- Over 900,000 hours worked.

	Hours	% of Total Hours
Work by Union Members	846,000	93 %
Work by Local Residents	576,000	63 %

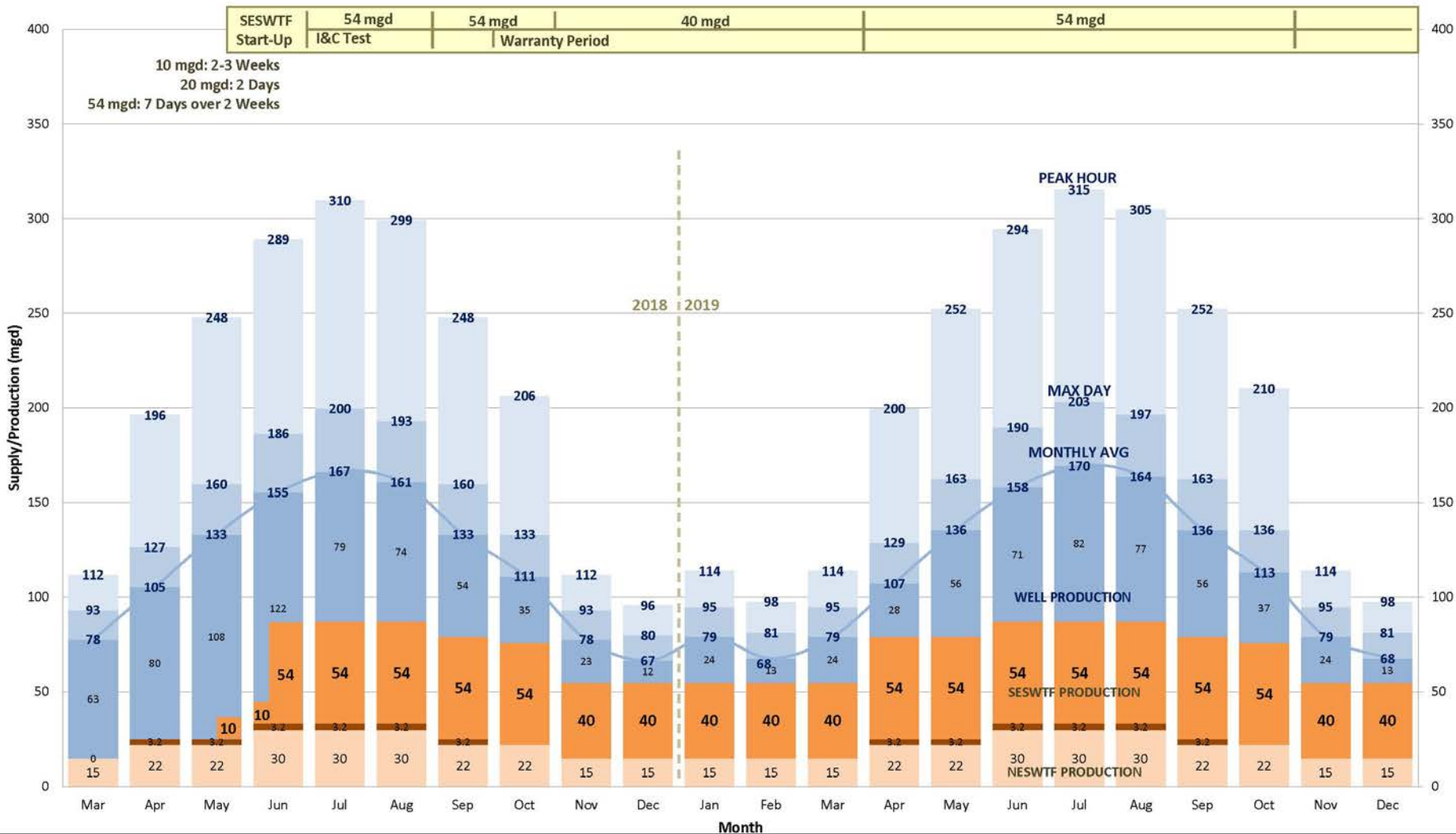
*Actual hours for completed and ongoing construction contracts.
Includes construction contracts for DPU projects > \$10 million.*

Recharge Fresno Safety Performance

- Over 900,000 hours worked by construction contractors.
- Recordable Incident Rate = incidents x 200,000 / work hours.
- An OSHA “Recordable Incident” is a work-related injury or illness that requires medical treatment beyond first aid.



New System Operation



- **March-May**

- March 2 - Initiate public outreach for start-up
- SESWTF commissioning and start-up
- Startup Operation at 10 million gallons per day

- **June**

- SESWTF construction substantially complete
- State of California approves operations plan and issues operating permit

- **June and beyond**

- Initial operation at up to 54 million gallons per day
- Re-Rate SESWTF to 80 mgd in 2020

Action Taken to Comply with Drinking Water Standards

- Continuing to comply with state and federal regulations for introducing new water source to system
- Coordinating with regulatory agencies on planning, testing, and startup of system
- Continuing to working with water industry experts to optimize system performance
- Conducting distribution system monitoring, testing and analysis
- Performing distribution system flushing in preparation for changes in flow direction, pressure, and velocity



Purpose:

- Reaffirm the City's commitment to complete Recharge Fresno Program on schedule and under budget
- Educate customers about water supply transition
- Provide opportunities to address customer questions



Who we need to reach:

- All customers and ratepayers
- Businesses that use water for processes or products (medical, food/beverage, schools, etc)



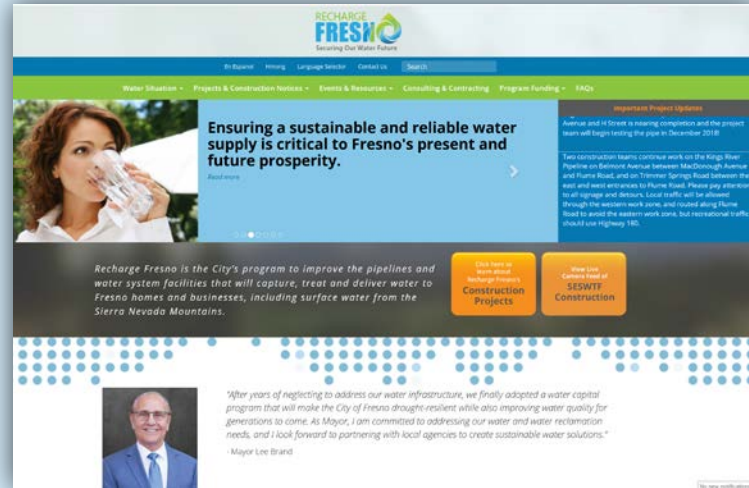
Informational Materials

- Fact sheets
- Recharge Fresno Website
- FAQs
- Presentations



Notifications

- Utility bill insert
- Business-focused mailer
- E-blasts
- Media outreach
- Social Media



Community Meetings

- April 23-25 (tentative): Meetings held in various locations for ratepayers to learn more about the water supply transition.



Business Meetings

- March 19-22 (tentative): Meet, as necessary, with businesses needing additional information or support.



City Council Inquiries to Staff:

- Michael Carbajal, UP&E Planning Manager
Michael.Carbajal@fresno.gov
(559) 621-1622
- Sarah Rossetto, Public Outreach Lead
Sarah.Rossetto@fresno.gov
(530) 304-8704

Customers Inquiries:

- www.RechargeFresno.com
- (844) FRESNOH2O

