

Agenda Items: ID#20-0020 (10:15 A.M.)

Date: 1/16/2020

RECEIVED

## FRESNO CITY COUNCIL

2020 JAN 15 A 8:11

CITY OF FRESNO  
CITY CLERK'S OFFICE



### Item(s)

**File ID20-0020 (10:15 A.M.)** – HEARING – Appeal Request: Denial of Waiver – Construction of sidewalk along S. Channing Avenue, APNs: 464-220-058, P19-

Sponsors: Public Works Department

**Contents: PowerPoint Presentation**

#### **Supplemental Information:**

Any agenda related public documents received and distributed to a majority of the City Council after the Agenda Packet is printed are included in Supplemental Packets. Supplemental Packets are produced as needed. The Supplemental Packet is available for public inspection in the City Clerk's Office, 2600 Fresno Street, during normal business hours (main location pursuant to the Brown Act, G.C. 54957.5(2)). In addition, Supplemental Packets are available for public review at the City Council meeting in the City Council Chambers, 2600 Fresno Street. Supplemental Packets are also available on-line on the City Clerk's website.

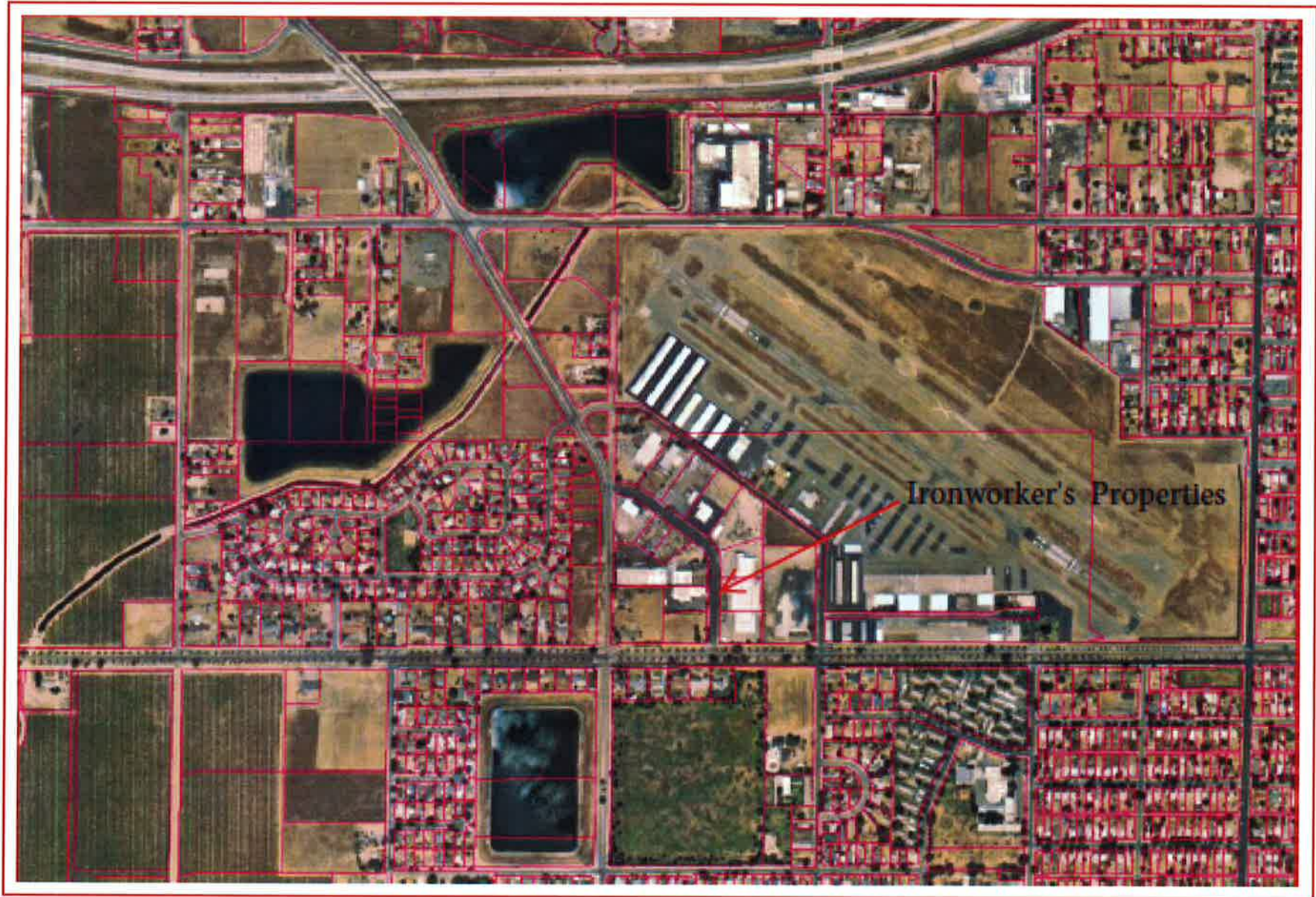
#### **Americans with Disabilities Act (ADA):**

The meeting room is accessible to the physically disabled, and the services of a translator can be made available. Requests for additional accommodations for the disabled, sign language interpreters, assistive listening devices, or translators should be made one week prior to the meeting. Please call City Clerk's Office at 621-7650. Please keep the doorways, aisles and wheelchair seating areas open and accessible. If you need assistance with seating because of a disability, please see Security.

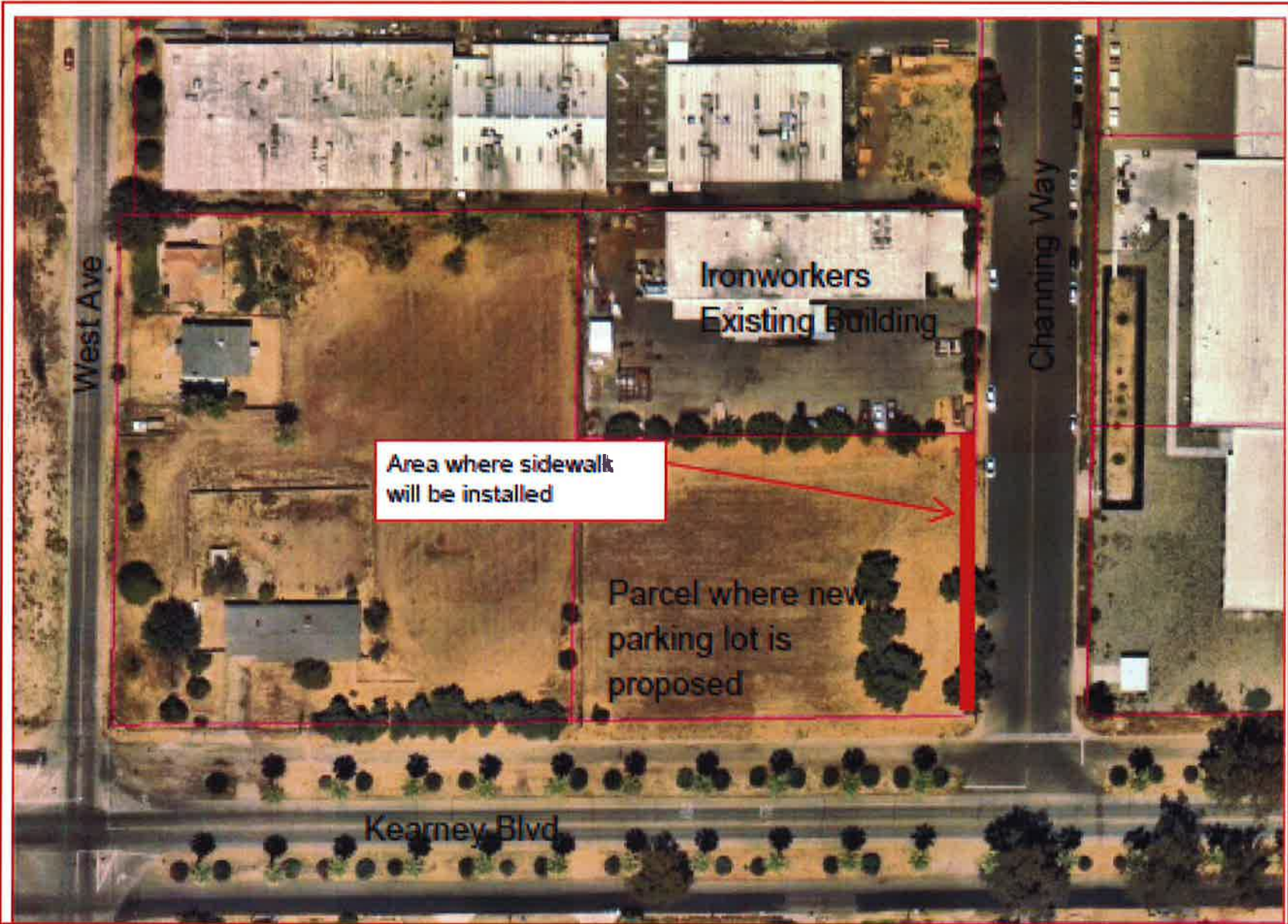
# IRON WORKERS TRAINING FACILITY

Northwest corner of Kearney and  
Channing Way







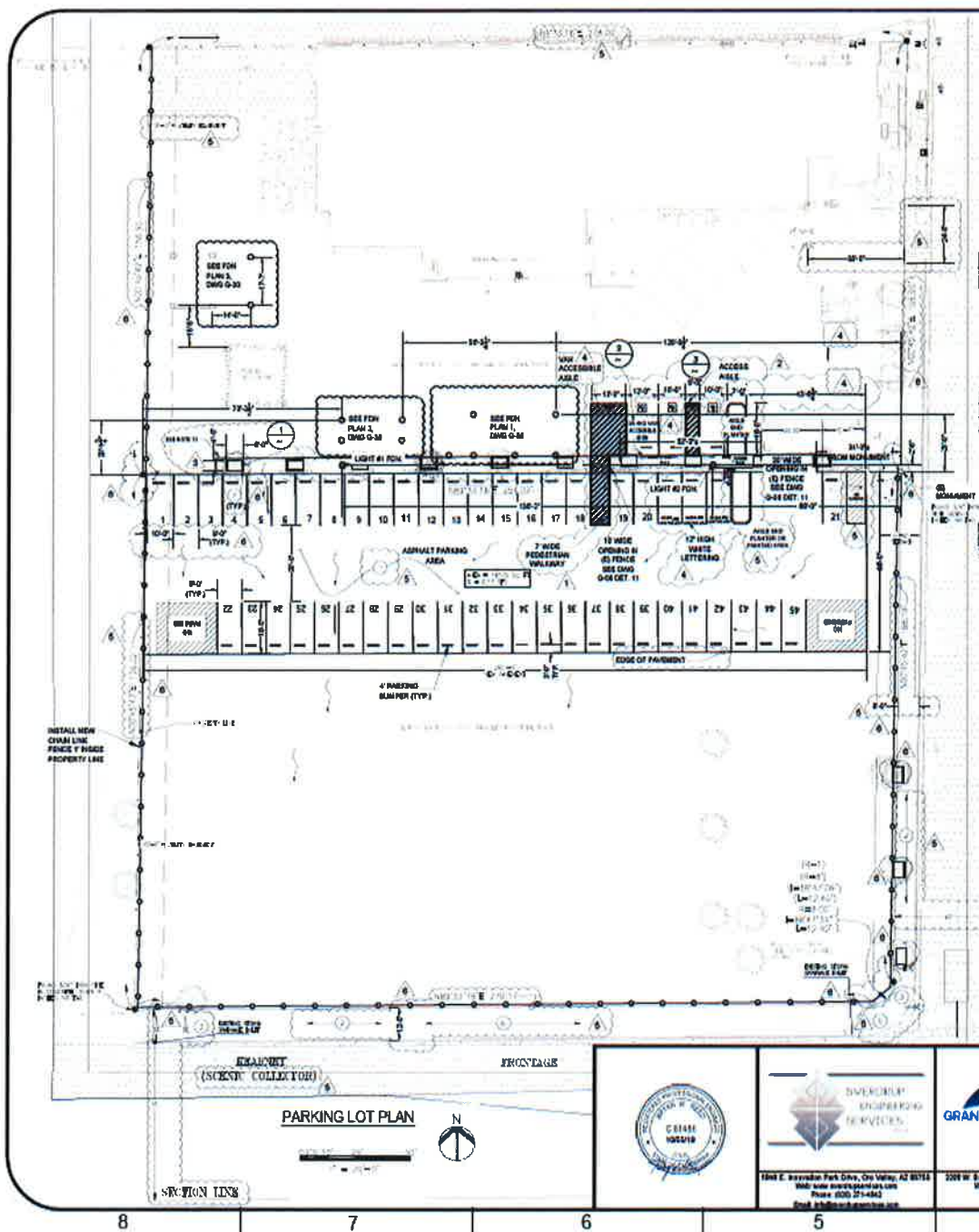


## Waivers Granted to Date

1. Sidewalks on Kearney deferred until additional development
2. Installation of metal streetlights, wood streetlights allowed to remain until additional development
3. Conversion of overhead wires, allowed to remain until additional development

# Why are sidewalks needed?

1. Fresno has one of the highest pedestrian injury and fatality rates per capita in the nation.
2. Sidewalks required by Municipal Code and recently adopted Complete Street Policy.
3. Significant truck traffic, loading and unloading.
4. Ironworkers training facility serves students, they are more likely to be dropped off or walk than general public.
5. Anytime a pedestrian is on the sidewalk, they are safer than in the street, even if sidewalks are not continuous.
6. All projects should install sidewalks, waiving the requirements for some projects sets a precedence and plays to favoritism.
7. Required by the American Disabilities Act.



**KEYED NOTES:**

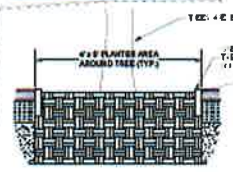
1. PAVEMENT AND DRAINAGE SHALL COMPLY W/ PW STD P-21, P-22, P-23.
2. INSTALL EDGEMOLDS FOR THE ENTIRE LENGTH OF THE PARCEL FRONTAGE. INSTALL PER STD P-4.
3. CONSTRUCT AN UNDERGROUND ELECTRICAL LIGHTING SYSTEM PER S-1, S-2, S-4, AND S-6. WOODEN POLES SHALL BE REPLACED WITH METAL POLES.
4. INSTALL TREE WELLS FOR PW STD. P-8 BRAND AND SPECIFICATIONS SECTION 28 2 11.6.
5. CONSTRUCT CURB RAMP PER PW STD. P-20 AND P-22, CORNER CUT DIMENSIONS MAY BE REQUIRED.
6. UNDERGROUND ALL EXISTING OFF-SITE OVERHEAD UTILITIES WITHIN THE LIMIT OF THIS APPLICATION AS PER PAR SECTION 10-207.
7. INSTALL 4" P PLANTER AREAS AROUND ALL TREES BETWEEN EXISTING PARKING LOT AND PROPOSED PARKING LOT.

**VOLUMES**

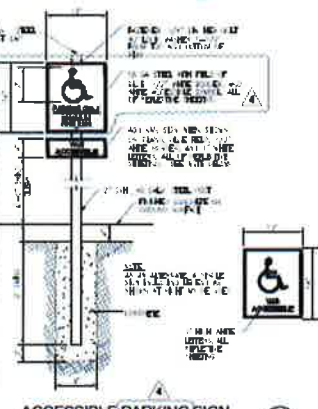
RAIN/GAUGE DATA  
 (PENDING WOODSIDE INTERNATIONAL AIRPORT STATION 80 530)  
 AVERAGE RAINFALL = 18.84 IN  
 EVAPORATION RATE = 18.84 IN  
 AFTER-EVENT TIME = 24 HRS  
 RUNOFF COEFF. ASPHALT = 0.8  
 Q = CTA  
 SHEETFLOW = 8.17 CFS

**GENERAL NOTES:**

1. SEE DRAWING Q-31 FOR CONCRETE AND CONSTRUCTION SPECIFICATIONS.
2. PARKING LOT SIGNAGE IS BASED ON CHMS IN THE CITY OF PLEASANT HILLS PUBLIC WORKS PARKING MANUAL.
3. PARKING LOT STRIPING SHALL CONSIST OF A MINIMUM 4" WIDE STRIP FOR CITY OF PLEASANT HILLS PUBLIC WORKS PARKING MANUAL, SECTION 2, PARAGRAPH F.
4. SEE DRAWING Q-31 FOR GENERAL CONSTRUCTION NOTES.
5. SEE DRAWINGS Q-04 AND Q-07 FOR FENCE DETAILS.
6. SEE DRAWING Q-30 FOR FOUNDATION PLAN.
7. SEE DRAWING Q-31 FOR FOUNDATION DESIGN.
8. SEE DRAWING Q-33 FOR ANCHOR BOLT PLAN.
9. ANY SURVEY MONUMENTS WITHIN THE AREA OF CONSTRUCTION SHALL BE PRESERVED OR RESET BY A PERSON LICENSED TO PRACTICE LAND SURVEYING IN THE STATE OF CALIFORNIA.
10. REPAIR ALL DRAINAGE AND/OR OFF-GRADE CONCRETE STREET IMPROVEMENTS AS DETERMINED BY THE CONSTRUCTION MANAGEMENT ENGINEER PRIOR TO OCCUPANCY.
11. THIS WORKING DRAWING PREPARED BY THE STREET DESIGNER SHALL BE USED FOR THE EXISTING UNDERGROUND FACILITY UNDERGROUND SERVICES.
12. THE PERFORMANCE OF ANY UNDERGROUND FACILITY WORK REQUIRES A STREET & CONDUIT OF WORK. ALL REPAIRS SHALL BE COMPLETED AND ACCEPTED BY THE CITY OF PLEASANT HILLS.
13. CONTACT THE PUBLIC WORKS DEPARTMENT (310) 471-4884, 14 HOURS DAILY FOR CONSTRUCTION.
14. SUBMIT STREET LIGHTING PLANS TO THE CITY OF PLEASANT HILLS.
15. SEEDS ARE REQUIRED TO PROVIDE REQUIRED PUBLIC IMPROVEMENTS. CONTACT THE PUBLIC WORKS DEPARTMENT (310) 471-4884, 14 HOURS DAILY FOR CONSTRUCTION.
16. SCREENED (GRAY) LINE WORK REPRESENTS BLACK LINE WORK REPRESENTS P.



**TREE WELL DETAIL**  
NTB



**ACCESSIBLE PARKING SIGN**  
NTB



**ACCESSIBLE PARKING STALLS**  
NTB

RULES FOR CONSTRUCTION		GRADING
BY	DATE	DESCRIPTION

BY	DATE	DESCRIPTION	BY	APP	CHK	
0	08/10/2019	ISSUED FOR CONSTRUCTION	HGP	EMS	MRC	FRESNO IRON
1	08/20/2019	RE-ISSUED FOR CONSTRUCTION	HGP	BAR	EMS	
2	08/20/2019	RE-ISSUED FOR CONSTRUCTION	HGP	BAR	EMS	
3	08/20/2019	RE-ISSUED FOR CONSTRUCTION	HGP	BAR	EMS	OVER AND PARKING
4	08/20/2019	RE-ISSUED FOR CONSTRUCTION	HGP	BAR	EMS	
5	08/20/2019	RE-ISSUED FOR CONSTRUCTION	HGP	BAR	EMS	
6	10/03/2019	RE-ISSUED FOR CONSTRUCTION	HGP	BAR	EMS	SHEET NUMBER:

CHAD C. SMITH  
 PROFESSIONAL ENGINEER  
 No. 105519  
 State of California

EMERALD  
 ENGINEERING  
 SERVICES

1400 E. International Park Drive, Oco Valley, AZ 85754  
 Web: www.emeraldeng.com  
 Phone: 602-275-4842  
 Fax: 602-275-4843

GRAND BRIDGE INC.  
 CIVIL ENGINEERING & CONSTRUCTION MANAGEMENT

2000 W. Sandhurst Avenue, Fresno, CA 93711  
 Web: www.grandbridge.com  
 Phone: (559) 437-3715

CHAD C. SMITH  
 PROFESSIONAL ENGINEER  
 No. 105519  
 State of California



Looking South on Channing Way, Ironwork's building on right side



Looking north on Channing Way from Kearney Blvd



## Ironwork's Training Center



Looking south on Channing Way from in front of Ironwork's building



Looking North on Channing Way from Kearney Blvd.

