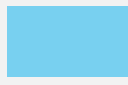
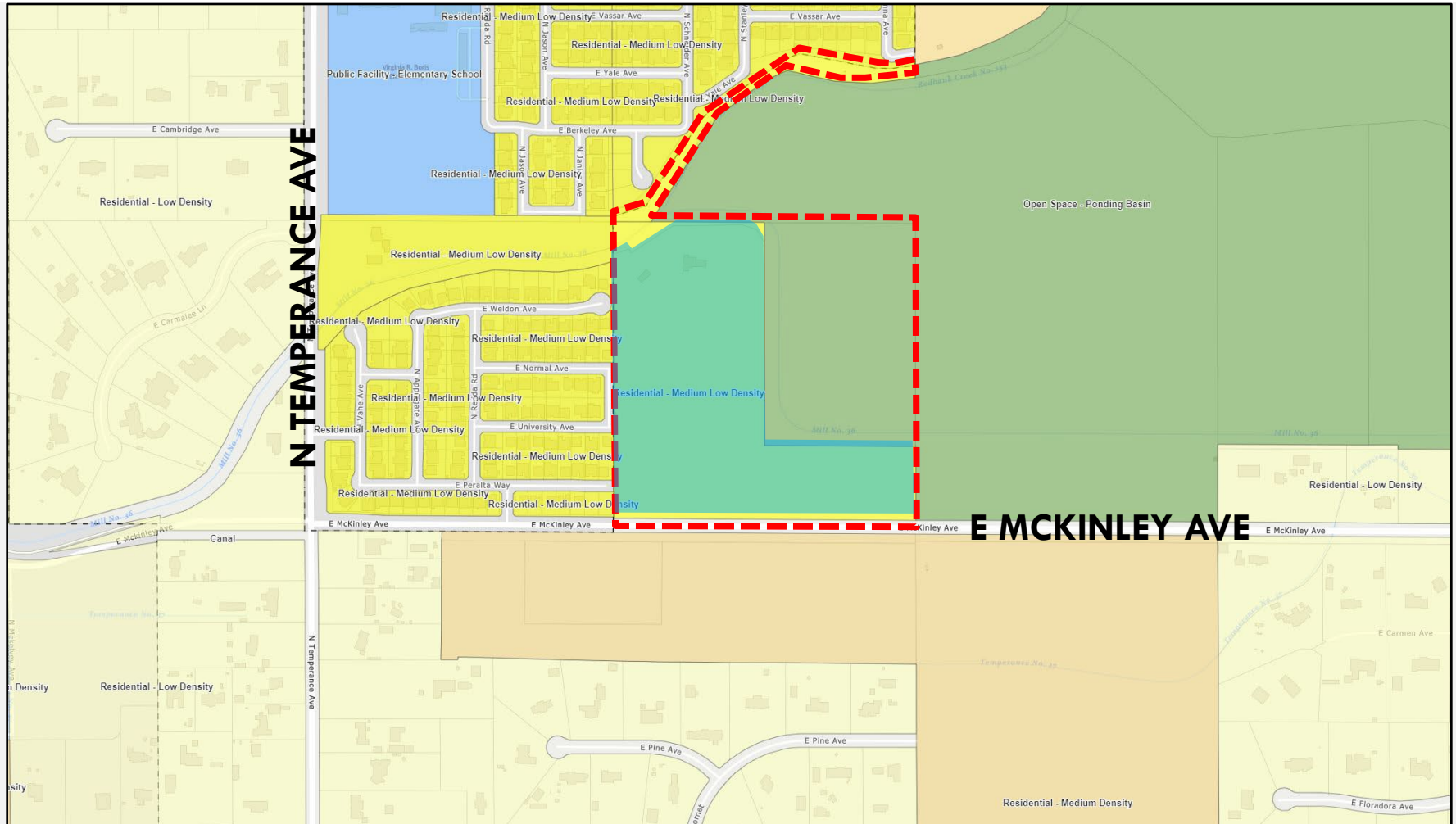
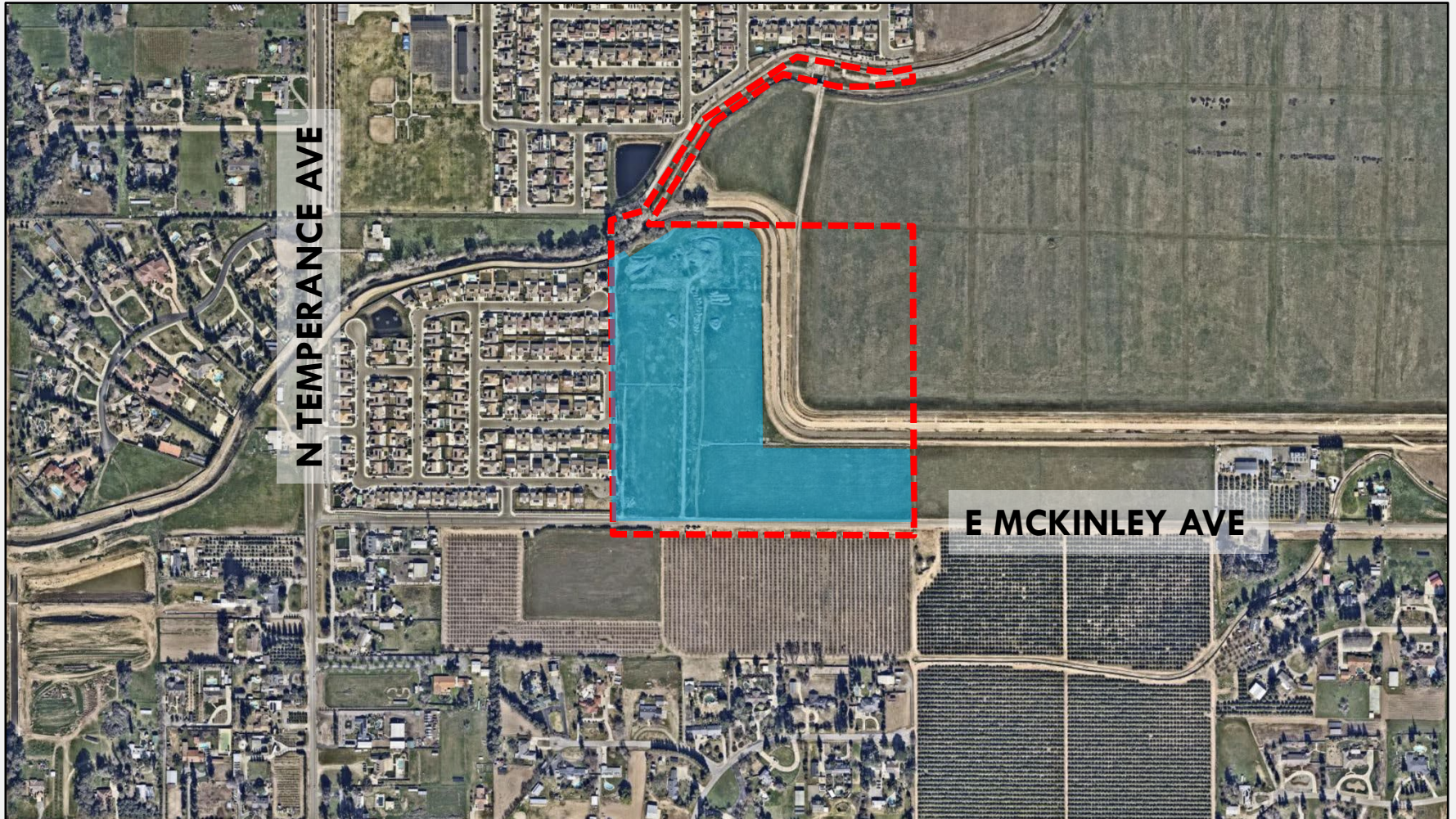


CONSIDERATION OF
ANNEXATION APPLICATION NO. P24-04526;
PRE-ZONE APPLICATION NO. P24-04527;
VESTING TENTATIVE TRACT MAP NO. 6502;
PLANNED DEVELOPMENT PERMIT NO. P25-00027;
AND THE RELATED ENVIRONMENTAL FINDING FOR
ENVIRONMENTAL ASSESSMENT NO.
T-6502/P24-04526/P24-04527/P25-00027

EXISTING GENERAL PLAN MAP



AERIAL MAP



TRACT MAP

ANNEXATION

PRE-ZONE

±23.56 AC.

119 LOTS

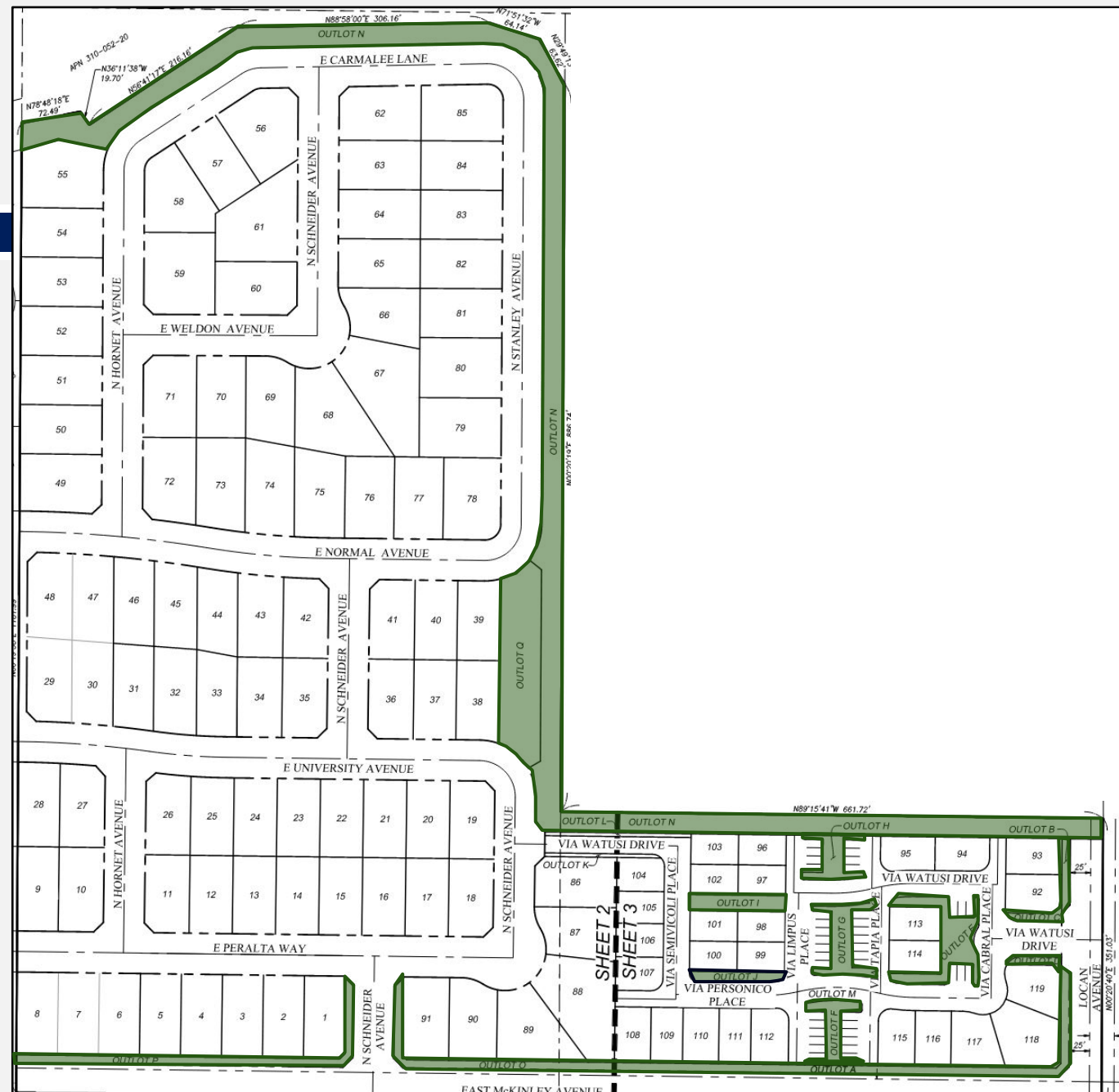
5.05 DU/AC

OPEN SPACE

TRAIL

PLANNED
DEVELOPMENT

PLAN. COMM.



TRACT MAP

