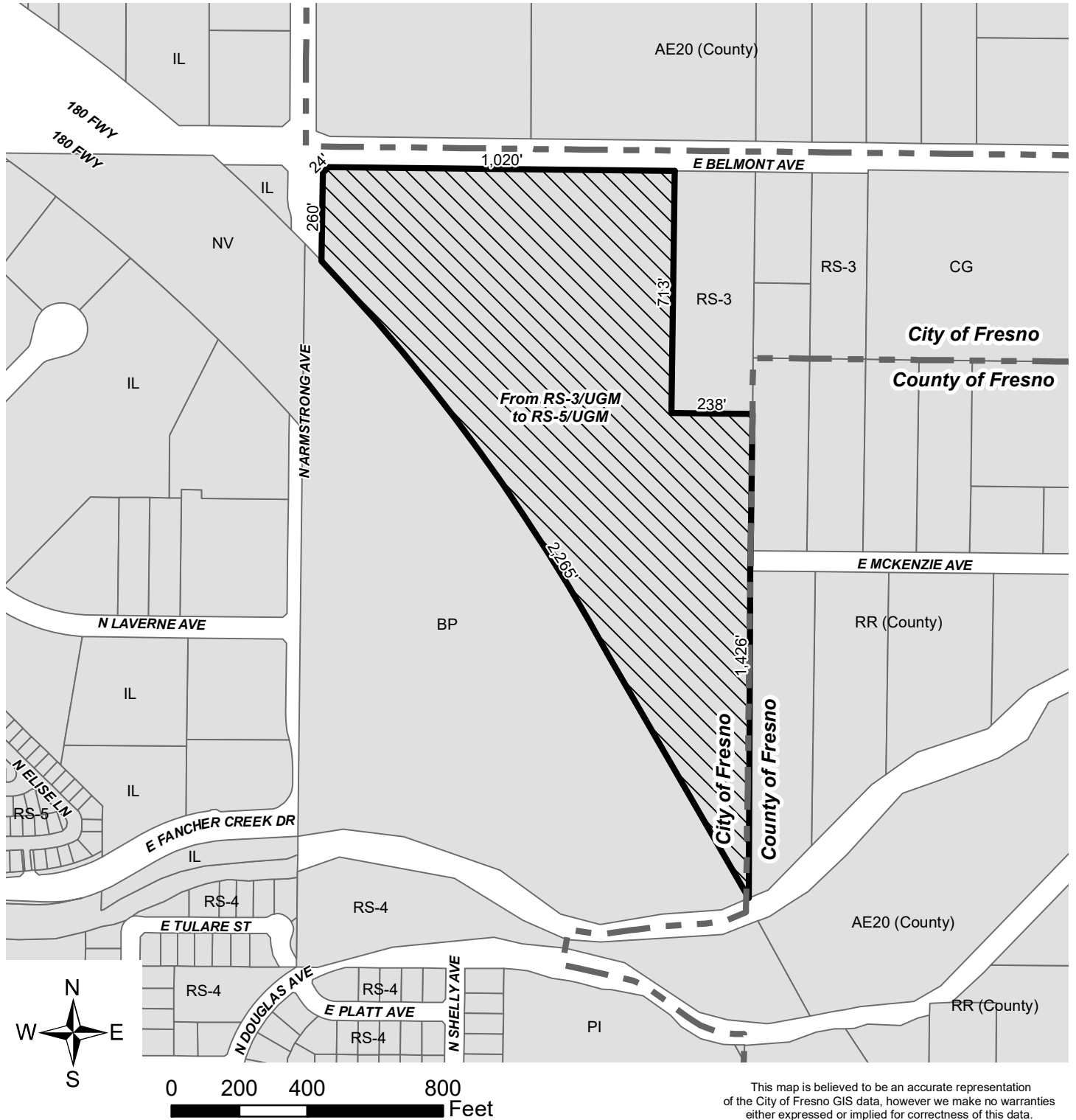



Proposed Rezone Exhibit



This map is believed to be an accurate representation of the City of Fresno GIS data, however we make no warranties either expressed or implied for correctness of this data.

P20-00577
APN: 313-270-45
660 E. Belmont Avenue

 Proposes to rezone 22 acres from the RS-3/UGM (*Residential Single-Family, Low Density, Urban Growth Management*) zone district to the RS-5/UGM (*Residential Single-Family, Medium Density, Urban Growth Management*) zone district.

 City Limits