

CITY OF FRESNO - PUBLIC WORKS DEPARTMENT COMPLETE STREETS POLICY DIRECTOR EXCEPTION REQUEST

The City of Fresno has made a commitment to plan, design, and construct complete streets where feasible. If one or more of the following conditions are met, exceptions to providing for all modes in each completed project may be authorized by the Public Works Director.

Please check all exceptions that apply and provide explanation below:

- An effected roadway prohibits, by law or adopted City plan, the use by specified users. In this instance, a greater effort may be necessary to accommodate all users (pedestrians, bicyclists, transit, motor vehicles, and trucks) elsewhere within the right-of-way, within the same transportation corridor or on adjacent roadways that provide similar access to a route or destination. Provide documentation related to the law or City Plan.
- The activities are ordinary maintenance or emergency repair activities designed to keep assets in serviceable condition (i.e. mowing, cleaning, sweeping, spot repair, and surface treatments such as chip seal or interim measures).
- The facility or amenity is proposed along a developable parcel.
- Project funds are restricted or constrained to specific purposes. Attach documentation related to grant funding purposes.
- Funding sources have been identified and/or allocated for construction within five years. Provide documentation related to allocated funding as an attachment.
- Postponement of a project will not be contrary to the public health and safety and is not detrimental to the orderly development of property, as defined in Chapter 12 of the Fresno Municipal Code.

Project Information:

PW File #	n/a	PW Project #	SM00050
Project Manager	Brian Russell	Project Title	Aircorp Drive Maint. Paving
Project Location	Aircorp Drive. - Walker to end (west of Clovis ave)		
Project Description	Mill and pave Aircorp Drive, upgrade curb ramps, repair sidewalk, curb and gutter.		
Exception Explanation	Street improvements are complete on the south side of Aircorp. Missing improvements on the north side of Aircorp, due to undeveloped parcels,		

Public Works Assistant Director or Manager

Date

Scott Mozler, PE, TE, Public Works Director

9-29-2020

Date



CITY OF FRESNO - PUBLIC WORKS DEPARTMENT COMPLETE STREETS POLICY DIRECTOR EXCEPTION REQUEST

The City of Fresno has made a commitment to plan, design, and construct complete streets where feasible. If one or more of the following conditions are met, exceptions to providing for all modes in each completed project may be authorized by the Public Works Director.

Please check all exceptions that apply and provide explanation below:

- An effected roadway prohibits, by law or adopted City plan, the use by specified users. In this instance, a greater effort may be necessary to accommodate all users (pedestrians, bicyclists, transit, motor vehicles, and trucks) elsewhere within the right-of-way, within the same transportation corridor or on adjacent roadways that provide similar access to a route or destination. Provide documentation related to the law or City Plan, PARTIAL COUNTY RIW
- The activities are ordinary maintenance or emergency repair activities designed to keep assets in serviceable condition (i.e. mowing, cleaning, sweeping, spot repair, and surface treatments such as chip seal or interim measures).
- The facility or amenity is proposed along a developable parcel.
- Project funds are restricted or constrained to specific purposes. Attach documentation related to grant funding purposes.
- Funding sources have been identified and/or allocated for construction within five years. Provide documentation related to allocated funding as an attachment.
- Postponement of a project will not be contrary to the public health and safety and is not detrimental to the orderly development of property, as defined in Chapter 12 of the Fresno Municipal Code.

Project Information:

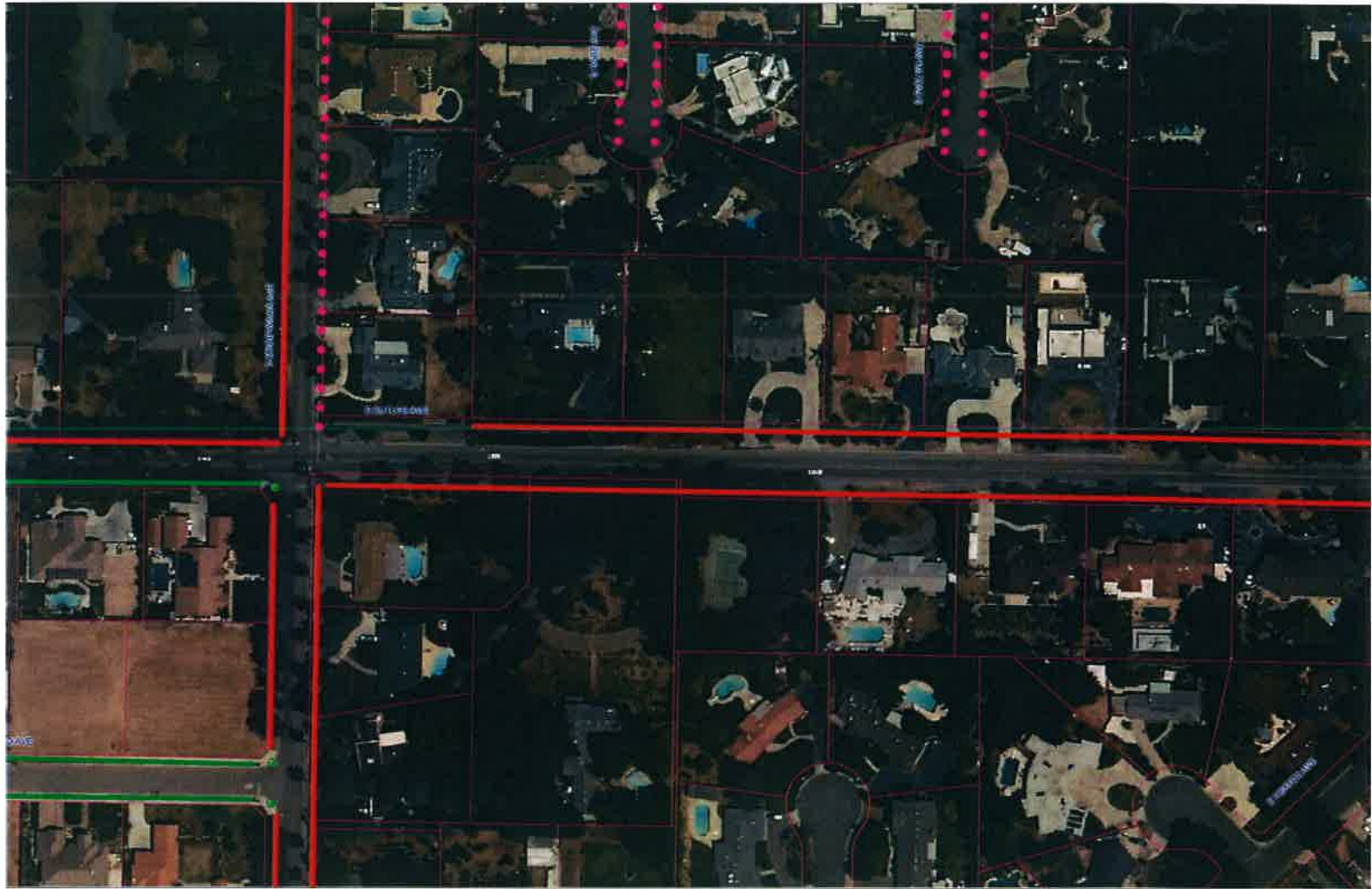
PW File #	n/a	PW Project #	SM00050
Project Manager	Brian Russell	Project Title	Butler east of Minniwawa
Project Location	Butler - Minnewawa to City/County Limits (950' east of Minniwawa)		
Project Description	Mill and pave Butler		
Exception Explanation	Immediately adjacent to County jurisdiction, that does not have sidewalks.		

Public Works Assistant Director or Manager

Date


 Scott Mozier, PE, TE, Public Works Director

9-29-2020
 Date





CITY OF FRESNO - PUBLIC WORKS DEPARTMENT COMPLETE STREETS POLICY DIRECTOR EXCEPTION REQUEST

The City of Fresno has made a commitment to plan, design, and construct complete streets where feasible. If one or more of the following conditions are met, exceptions to providing for all modes in each completed project may be authorized by the Public Works Director.

Please check all exceptions that apply and provide explanation below:

- An effected roadway prohibits, by law or adopted City plan, the use by specified users. In this instance, a greater effort may be necessary to accommodate all users (pedestrians, bicyclists, transit, motor vehicles, and trucks) elsewhere within the right-of-way, within the same transportation corridor or on adjacent roadways that provide similar access to a route or destination. Provide documentation related to the law or City Plan.
- The activities are ordinary maintenance or emergency repair activities designed to keep assets in serviceable condition (i.e. mowing, cleaning, sweeping, spot repair, and surface treatments such as chip seal or interim measures).
- The facility or amenity is proposed along a developable parcel.
- Project funds are restricted or constrained to specific purposes. Attach documentation related to grant funding purposes.
- Funding sources have been identified and/or allocated for construction within five years. Provide documentation related to allocated funding as an attachment.
- Postponement of a project will not be contrary to the public health and safety and is not detrimental to the orderly development of property, as defined in Chapter 12 of the Fresno Municipal Code.

Project Information:

PW File #	n/a	PW Project #	SM 50
Project Manager	Brian Russell	Project Title	Clinton Paving
Project Location	Clinton - Vassar to Brawley		
Project Description	Joint City-County paving project. Mill and pave Clinton, upgrade of curb ramps.		
Exception Explanation	Areas of missing street improvements along undeveloped parcels located in both the City and in the County. Lacking right of way. Full widening		

Public Works Assistant Director or Manager

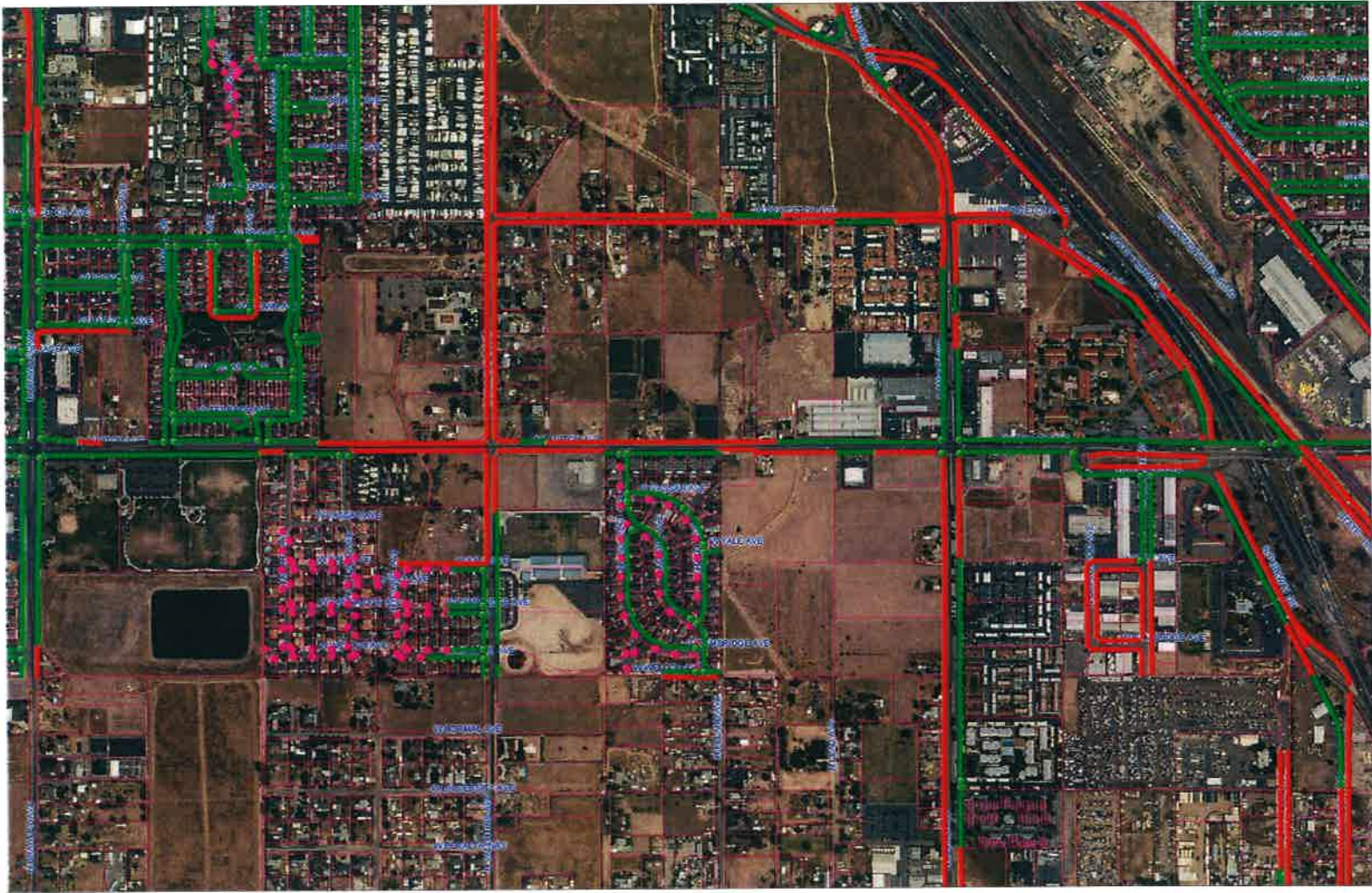
Date

Scott Mozier, PE, TE, Public Works Director

Date



9-29-2020



CITY OF FRESNO - PUBLIC WORKS DEPARTMENT COMPLETE STREETS POLICY DIRECTOR EXCEPTION REQUEST

The City of Fresno has made a commitment to plan, design, and construct complete streets where feasible. If one or more of the following conditions are met, exceptions to providing for all modes in each completed project may be authorized by the Public Works Director.

Please check all exceptions that apply and provide explanation below:

- An effected roadway prohibits, by law or adopted City plan, the use by specified users. In this instance, a greater effort may be necessary to accommodate all users (pedestrians, bicyclists, transit, motor vehicles, and trucks) elsewhere within the right-of-way, within the same transportation corridor or on adjacent roadways that provide similar access to a route or destination. Provide documentation related to the law or City Plan. PARTIAL COUNTY R/W
- The activities are ordinary maintenance or emergency repair activities designed to keep assets in serviceable condition (i.e. mowing, cleaning, sweeping, spot repair, and surface treatments such as chip seal or interim measures).
- The facility or amenity is proposed along a developable parcel.
- Project funds are restricted or constrained to specific purposes. Attach documentation related to grant funding purposes.
- Funding sources have been identified and/or allocated for construction within five years. Provide documentation related to allocated funding as an attachment.
- Postponement of a project will not be contrary to the public health and safety and is not detrimental to the orderly development of property, as defined in Chapter 12 of the Fresno Municipal Code.

Project Information:

PW File #	n/a	PW Project #	SB00057
Project Manager	Brian Russell	Project Title	Chestnut Paving
Project Location	Chestnut - Herndon to Alluvial		
Project Description	Joint City - County project. Mill and pave Chestnut, upgrade of curb ramps, construction of missing sidewalk on west side of Chestnut at +		
Exception Explanation	Missing sidewalk, curb, and gutter within the County of Fresno Jurisdictional limits on the east side of Chestnut.		

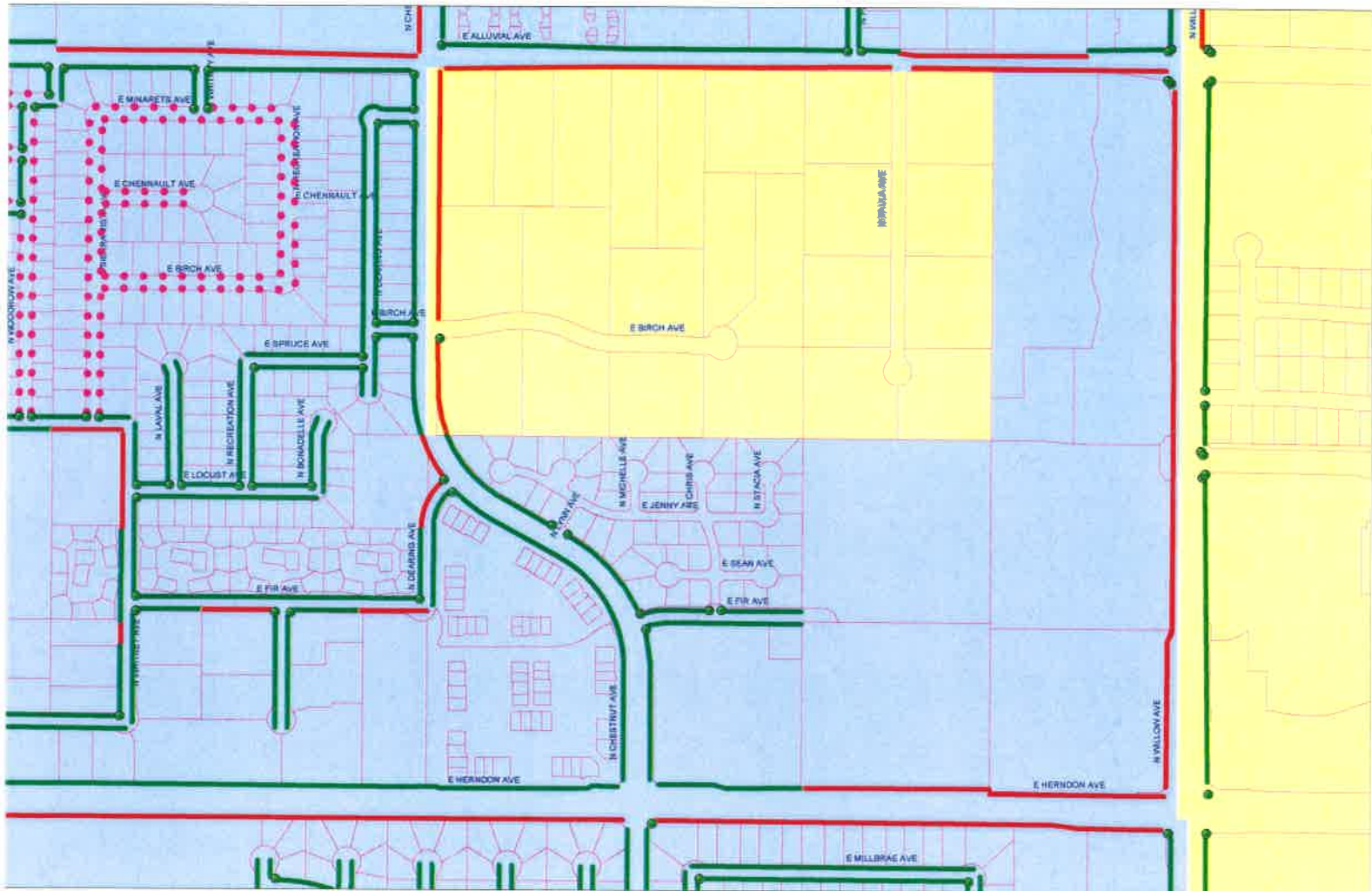
Public Works Assistant Director or Manager

Date


Scott Mozier, PE, TE, Public Works Director

9-29-2020
Date





CITY OF FRESNO - PUBLIC WORKS DEPARTMENT COMPLETE STREETS POLICY DIRECTOR EXCEPTION REQUEST

The City of Fresno has made a commitment to plan, design, and construct complete streets where feasible. If one or more of the following conditions are met, exceptions to providing for all modes in each completed project may be authorized by the Public Works Director.

Please check all exceptions that apply and provide explanation below:

- An effected roadway prohibits, by law or adopted City plan, the use by specified users. In this instance, a greater effort may be necessary to accommodate all users (pedestrians, bicyclists, transit, motor vehicles, and trucks) elsewhere within the right-of-way, within the same transportation corridor or on adjacent roadways that provide similar access to a route or destination. Provide documentation related to the law or City Plan. PARTIAL COUNTY RIW
- The activities are ordinary maintenance or emergency repair activities designed to keep assets in serviceable condition (i.e. mowing, cleaning, sweeping, spot repair, and surface treatments such as chip seal or interim measures).
- The facility or amenity is proposed along a developable parcel.
- Project funds are restricted or constrained to specific purposes. Attach documentation related to grant funding purposes.
- Funding sources have been identified and/or allocated for construction within five years. Provide documentation related to allocated funding as an attachment.
- Postponement of a project will not be contrary to the public health and safety and is not detrimental to the orderly development of property, as defined in Chapter 12 of the Fresno Municipal Code.

Project Information:

PW File #	n/a	PW Project #	SB00062
Project Manager	Brian Russell	Project Title	Barstow Paving
Project Location	Barstow - Van Ness to Marks		
Project Description	Joint City - County project. Mill and pave Barstow, upgrade of curb ramps.		
Exception Explanation	Sidewalk missing on north and south side of Barstow from Van Ness to 300' west of Van Ness. Curb ramps and curb/gutter missing at n/w and		

Public Works Assistant Director or Manager

Date


 Scott Mozier, PE, TE, Public Works Director

9-29-2020
 Date



CITY OF FRESNO - PUBLIC WORKS DEPARTMENT COMPLETE STREETS POLICY DIRECTOR EXCEPTION REQUEST

The City of Fresno has made a commitment to plan, design, and construct complete streets where feasible. If one or more of the following conditions are met, exceptions to providing for all modes in each completed project may be authorized by the Public Works Director.

Please check all exceptions that apply and provide explanation below:

- An effected roadway prohibits, by law or adopted City plan, the use by specified users. In this instance, a greater effort may be necessary to accommodate all users (pedestrians, bicyclists, transit, motor vehicles, and trucks) elsewhere within the right-of-way, within the same transportation corridor or on adjacent roadways that provide similar access to a route or destination. Provide documentation related to the law or City Plan. COUNTY R/W
- The activities are ordinary maintenance or emergency repair activities designed to keep assets in serviceable condition (i.e. mowing, cleaning, sweeping, spot repair, and surface treatments such as chip seal or interim measures).
- The facility or amenity is proposed along a developable parcel.
- Project funds are restricted or constrained to specific purposes. Attach documentation related to grant funding purposes. COUNTY FUNDS FOR ROAD MAINTENANCE ONLY.
- Funding sources have been identified and/or allocated for construction within five years. Provide documentation related to allocated funding as an attachment.
- Postponement of a project will not be contrary to the public health and safety and is not detrimental to the orderly development of property, as defined in Chapter 12 of the Fresno Municipal Code.

Project Information:

PW File #	n/a	PW Project #	SB00008
Project Manager	Brian Russell	Project Title	Marks Paving
Project Location	Marks Avenue - Barstow to BNSF RR (approx. 1350' south of Barstow)		
Project Description	Joint City - County project. Mill and pave Marks, upgrade of curb ramps.		
Exception Explanation	Sidewalk missing on the east side of Marks 125' north of San Jose to Barstow all within the County of Fresno.		

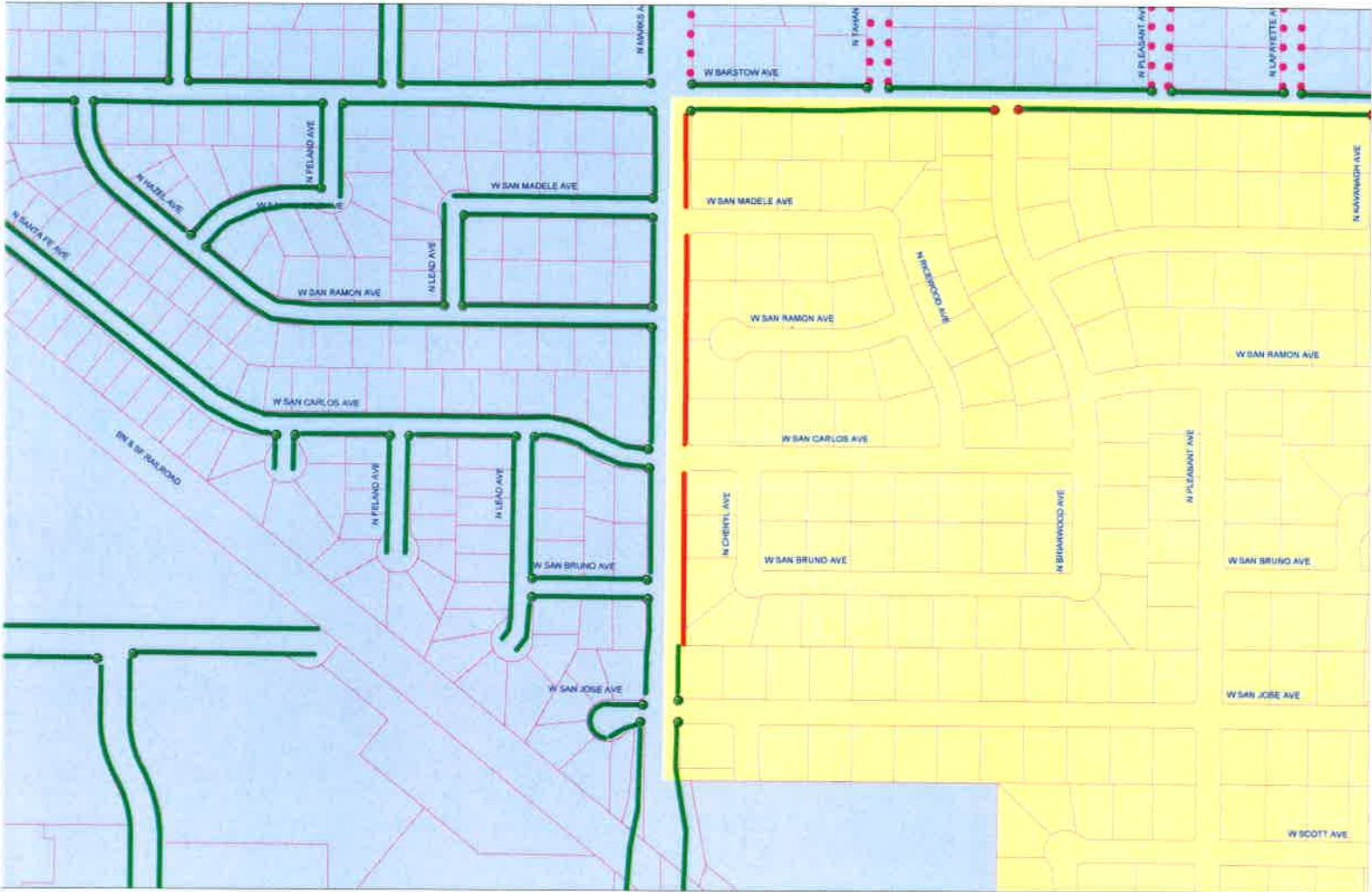
Public Works Assistant Director or Manager

Date


 Scott Mozier, PE, TE, Public Works Director

9-29-2020

Date





CITY OF FRESNO - PUBLIC WORKS DEPARTMENT COMPLETE STREETS POLICY DIRECTOR EXCEPTION REQUEST

The City of Fresno has made a commitment to plan, design, and construct complete streets where feasible. If one or more of the following conditions are met, exceptions to providing for all modes in each completed project may be authorized by the Public Works Director.

Please check all exceptions that apply and provide explanation below:

- An effected roadway prohibits, by law or adopted City plan, the use by specified users. In this instance, a greater effort may be necessary to accommodate all users (pedestrians, bicyclists, transit, motor vehicles, and trucks) elsewhere within the right-of-way, within the same transportation corridor or on adjacent roadways that provide similar access to a route or destination. Provide documentation related to the law or City Plan.
PREVIOUS INDUSTRIAL DEVELOPMENT NOT PLANNED WITH SW.
- The activities are ordinary maintenance or emergency repair activities designed to keep assets in serviceable condition (i.e. mowing, cleaning, sweeping, spot repair, and surface treatments such as chip seal or interim measures).
- The facility or amenity is proposed along a developable parcel.
- Project funds are restricted or constrained to specific purposes. Attach documentation related to grant funding purposes.
- Funding sources have been identified and/or allocated for construction within five years. Provide documentation related to allocated funding as an attachment.
- Postponement of a project will not be contrary to the public health and safety and is not detrimental to the orderly development of property, as defined in Chapter 12 of the Fresno Municipal Code.

Project Information:

PW File #	n/a	PW Project #	SB00030
Project Manager	Brian Russell	Project Title	Second street paving
Project Location	Second south of Jensen, Golden State, Fourth & Date to Orange		
Project Description	Mill and pave, upgrade of curb ramps, construction of missing sidewalk on Second.		
Exception Explanation	Sidewalk missing on a portion of Jensen Frontage, Golden State Frontage, Fourth and Date. Industrial area that was developed without		

Public Works Assistant Director or Manager

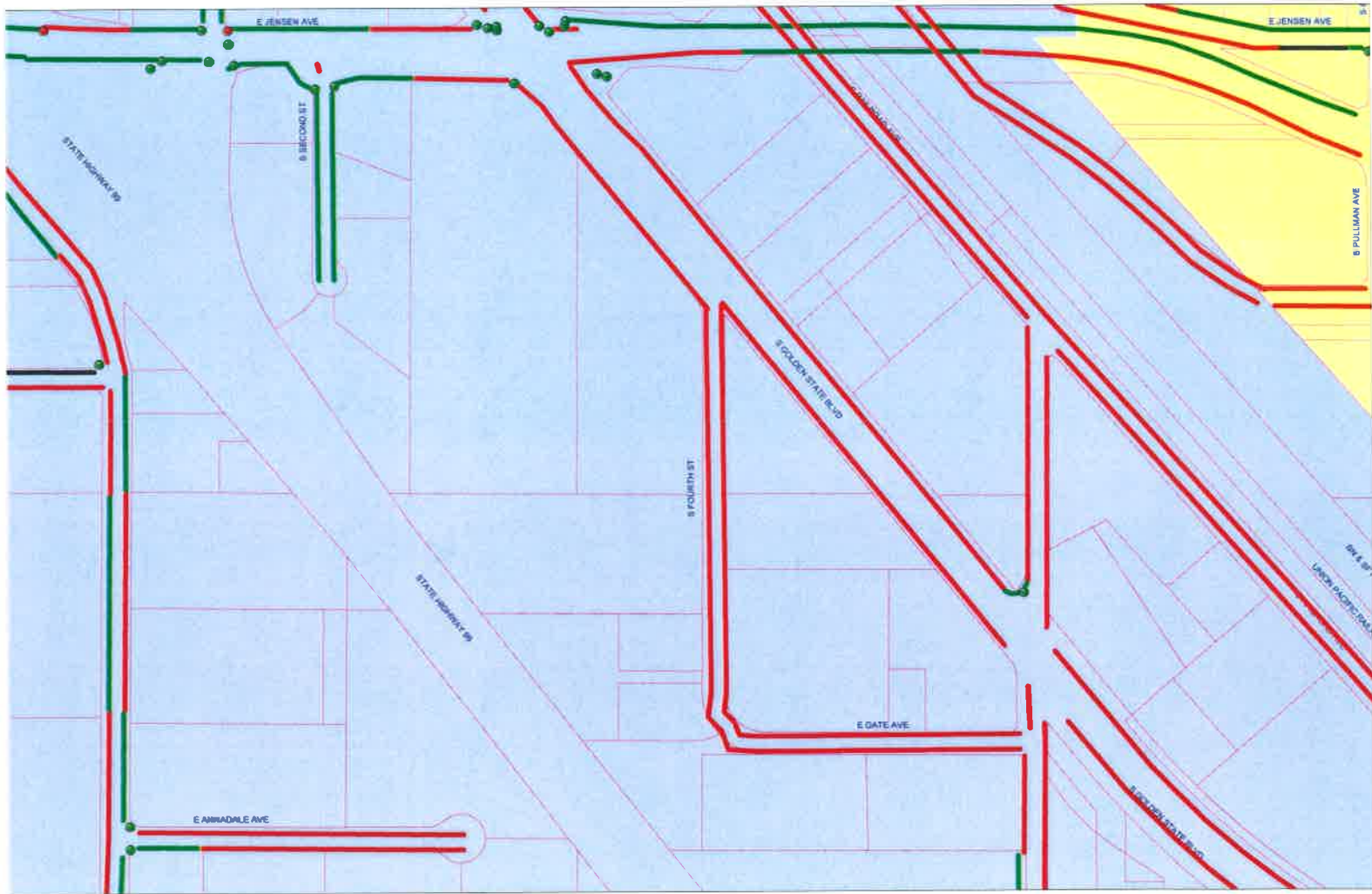
Date

Scott Mozier, PE, TE, Public Works Director

Date



9-29-2020





CITY OF FRESNO - PUBLIC WORKS DEPARTMENT COMPLETE STREETS POLICY DIRECTOR EXCEPTION REQUEST

The City of Fresno has made a commitment to plan, design, and construct complete streets where feasible. If one or more of the following conditions are met, exceptions to providing for all modes in each completed project may be authorized by the Public Works Director.

Please check all exceptions that apply and provide explanation below:

- An effected roadway prohibits, by law or adopted City plan, the use by specified users. In this instance, a greater effort may be necessary to accommodate all users (pedestrians, bicyclists, transit, motor vehicles, and trucks) elsewhere within the right-of-way, within the same transportation corridor or on adjacent roadways that provide similar access to a route or destination. Provide documentation related to the law or City Plan.
- The activities are ordinary maintenance or emergency repair activities designed to keep assets in serviceable condition (i.e. mowing, cleaning, sweeping, spot repair, and surface treatments such as chip seal or interim measures).
- The facility or amenity is proposed along a developable parcel.
- Project funds are restricted or constrained to specific purposes. Attach documentation related to grant funding purposes.
- Funding sources have been identified and/or allocated for construction within five years. Provide documentation related to allocated funding as an attachment.
- Postponement of a project will not be contrary to the public health and safety and is not detrimental to the orderly development of property, as defined in Chapter 12 of the Fresno Municipal Code.

Project Information:

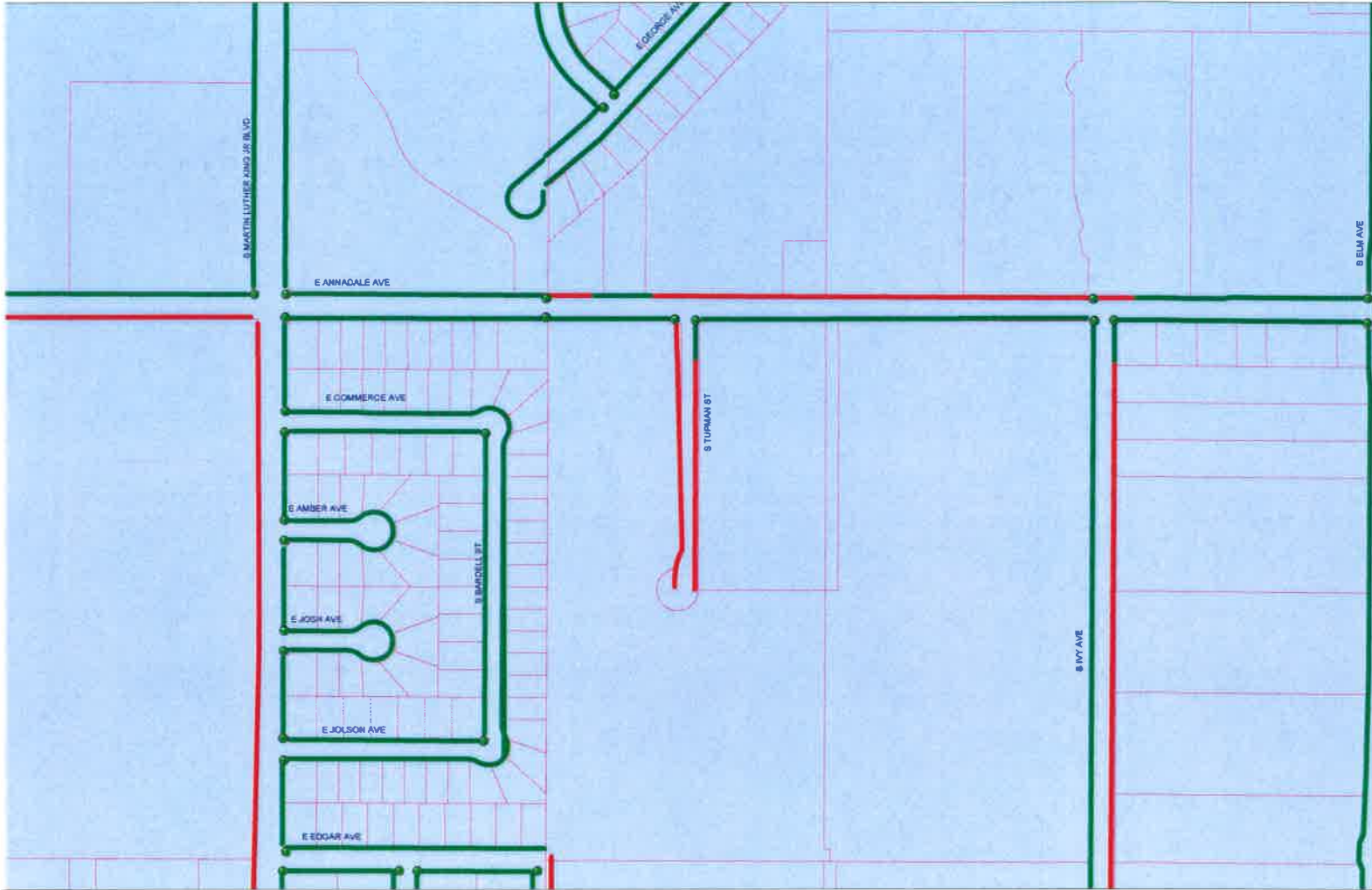
PW File #	<u>n/a</u>	PW Project #	<u>SM00050</u>
Project Manager	<u>Brian Russell</u>	Project Title	<u>Tupman Paving</u>
Project Location	<u>Tupman south of Annadale</u>		
Project Description	<u>Construct sidewalk on east side of Tupman. Mill and pave Tupman.</u>		
Exception Explanation	<u>Missing street improvements on undeveloped parcel on the west side of Tupman south of Annadale. Lacking right of way on west side.</u>		

Public Works Assistant Director or Manager

Date


Scott Mozier, PE, TE, Public Works Director

9-29-2020
Date





CITY OF FRESNO - PUBLIC WORKS DEPARTMENT COMPLETE STREETS POLICY DIRECTOR EXCEPTION REQUEST

The City of Fresno has made a commitment to plan, design, and construct complete streets where feasible. If one or more of the following conditions are met, exceptions to providing for all modes in each completed project may be authorized by the Public Works Director.

Please check all exceptions that apply and provide explanation below:

- An effected roadway prohibits, by law or adopted City plan, the use by specified users. In this instance, a greater effort may be necessary to accommodate all users (pedestrians, bicyclists, transit, motor vehicles, and trucks) elsewhere within the right-of-way, within the same transportation corridor or on adjacent roadways that provide similar access to a route or destination. Provide documentation related to the law or City Plan.
- The activities are ordinary maintenance or emergency repair activities designed to keep assets in serviceable condition (i.e. mowing, cleaning, sweeping, spot repair, and surface treatments such as chip seal or interim measures).
- The facility or amenity is proposed along a developable parcel.
- Project funds are restricted or constrained to specific purposes. Attach documentation related to grant funding purposes.
- Funding sources have been identified and/or allocated for construction within five years. Provide documentation related to allocated funding as an attachment.
- Postponement of a project will not be contrary to the public health and safety and is not detrimental to the orderly development of property, as defined in Chapter 12 of the Fresno Municipal Code.

Project Information:

PW File #	<u>12404</u>	PW Project #	<u>PW00884/CM00014</u>
Project Manager	<u>Cecilio Garcia</u>	Project Title	<u>Slurry Seal Rqmts. Contract</u>
Project Location	<u>City Wide - various locations (major, minor and local streets)</u>		
Project Description	<u>Application of slurry seal surfacing on various streets for routine maintenance.</u>		
Exception Explanation	<u>The slurry project is ordinary maintenance of existing roadways.</u>		



Public Works Assistant Director or Manager

8/17/2020
Date



Scott Mozier, PE, TE, Public Works Director

10/15/2020
Date

CITY OF FRESNO - PUBLIC WORKS DEPARTMENT COMPLETE STREETS POLICY DIRECTOR EXCEPTION REQUEST

The City of Fresno has made a commitment to plan, design, and construct complete streets where feasible. If one or more of the following conditions are met, exceptions to providing for all modes in each completed project may be authorized by the Public Works Director.

Please check all exceptions that apply and provide explanation below:

- An effected roadway prohibits, by law or adopted City plan, the use by specified users. In this instance, a greater effort may be necessary to accommodate all users (pedestrians, bicyclists, transit, motor vehicles, and trucks) elsewhere within the right-of-way, within the same transportation corridor or on adjacent roadways that provide similar access to a route or destination. Provide documentation related to the law or City Plan.
- The activities are ordinary maintenance or emergency repair activities designed to keep assets in serviceable condition (i.e. mowing, cleaning, sweeping, spot repair, and surface treatments such as chip seal or interim measures).
- The facility or amenity is proposed along a developable parcel.
- Project funds are restricted or constrained to specific purposes. Attach documentation related to grant funding purposes.
- Funding sources have been identified and/or allocated for construction within five years. Provide documentation related to allocated funding as an attachment.
- Postponement of a project will not be contrary to the public health and safety and is not detrimental to the orderly development of property, as defined in Chapter 12 of the Fresno Municipal Code.

Project Information:

PW File #	<u>12447</u>	PW Project #	<u>PW00838</u>
Project Manager	<u>Jovi R. Torio</u>	Project Title	<u>Cedar Avenue Pavement Overlay</u>
Project Location	<u>Barstow to Bullard Avenues</u>		
Project Description	<u>Pavement grind and overlay along Cedar Avenue between Barstow and Bullard Avenues and upgrade of existing curb ramps within project limits.</u>		
Exception Explanation	<u>The granted Senate Bill 1 (SB1) funds are for the pavement grind and overlay, and curb ramp upgrades within project limits only.</u>		

Public Works Assistant Director or Manager

Date


Scott Mozier, PE, TE, Public Works Director

10/15/2020
Date

CITY OF FRESNO - PUBLIC WORKS DEPARTMENT COMPLETE STREETS POLICY DIRECTOR EXCEPTION REQUEST

The City of Fresno has made a commitment to plan, design, and construct complete streets where feasible. If one or more of the following conditions are met, exceptions to providing for all modes in each completed project may be authorized by the Public Works Director.

Please check all exceptions that apply and provide explanation below:

- An effected roadway prohibits, by law or adopted City plan, the use by specified users. In this instance, a greater effort may be necessary to accommodate all users (pedestrians, bicyclists, transit, motor vehicles, and trucks) elsewhere within the right-of-way, within the same transportation corridor or on adjacent roadways that provide similar access to a route or destination. Provide documentation related to the law or City Plan.
- The activities are ordinary maintenance or emergency repair activities designed to keep assets in serviceable condition (i.e. mowing, cleaning, sweeping, spot repair, and surface treatments such as chip seal or interim measures).
- The facility or amenity is proposed along a developable parcel.
- Project funds are restricted or constrained to specific purposes. Attach documentation related to grant funding purposes.
- Funding sources have been identified and/or allocated for construction within five years. Provide documentation related to allocated funding as an attachment.
- Postponement of a project will not be contrary to the public health and safety and is not detrimental to the orderly development of property, as defined in Chapter 12 of the Fresno Municipal Code.

Project Information:

PW File #	<u>12409</u>	PW Project #	<u>PW00793</u>
Project Manager	<u>Scott Tyler</u>	Project Title	<u>Ashlan Avenue Overlay</u>
Project Location	<u>Ashlan Ave from First Street to Millbrook Avenue.</u>		
Project Description	<u>Asphalt overlay, as well as the installation of curb ramps, signal loop detectors, signage and striping.</u>		
Exception Explanation	<u>FHWA RSTP grant funding did not provide for additional bike facilities for street resurfacing projects (grant application attached).</u>		



Public Works Assistant Director or Manager

8/10/2020

Date



Scott Mozier, PE, TE, Public Works Director

10/15/2020

Date

CITY OF FRESNO - PUBLIC WORKS DEPARTMENT COMPLETE STREETS POLICY DIRECTOR EXCEPTION REQUEST

The City of Fresno has made a commitment to plan, design, and construct complete streets where feasible. If one or more of the following conditions are met, exceptions to providing for all modes in each completed project may be authorized by the Public Works Director.

Please check all exceptions that apply and provide explanation below:

- An effected roadway prohibits, by law or adopted City plan, the use by specified users. In this instance, a greater effort may be necessary to accommodate all users (pedestrians, bicyclists, transit, motor vehicles, and trucks) elsewhere within the right-of-way, within the same transportation corridor or on adjacent roadways that provide similar access to a route or destination. Provide documentation related to the law or City Plan.
- The activities are ordinary maintenance or emergency repair activities designed to keep assets in serviceable condition (i.e. mowing, cleaning, sweeping, spot repair, and surface treatments such as chip seal or interim measures).
- The facility or amenity is proposed along a developable parcel.
- Project funds are restricted or constrained to specific purposes. Attach documentation related to grant funding purposes.
- Funding sources have been identified and/or allocated for construction within five years. Provide documentation related to allocated funding as an attachment.
- Postponement of a project will not be contrary to the public health and safety and is not detrimental to the orderly development of property, as defined in Chapter 12 of the Fresno Municipal Code.

Project Information:

PW File #	<u>12298</u>	PW Project #	<u>PW00791</u>
Project Manager	<u>Scott Tyler</u>	Project Title	<u>Blackstone Avenue Overlay</u>
Project Location	<u>Blackstone Ave, between Ashlan and Dakota Avenues</u>		
Project Description	<u>Asphalt overlay, installation of curb ramps, signal loop detectors, signage and striping.</u>		
Exception Explanation	<u>FHWA RSTP grant funding did not provide for additional bike facilities for street resurfacing projects (grant application attached).</u>		



Public Works Assistant Director or Manager

8/10/2020

Date



Scott Mozier, PE, TE, Public Works Director

10/15/2020

Date

CITY OF FRESNO - PUBLIC WORKS DEPARTMENT COMPLETE STREETS POLICY DIRECTOR EXCEPTION REQUEST

The City of Fresno has made a commitment to plan, design, and construct complete streets where feasible. If one or more of the following conditions are met, exceptions to providing for all modes in each completed project may be authorized by the Public Works Director.

Please check all exceptions that apply and provide explanation below:

- An effected roadway prohibits, by law or adopted City plan, the use by specified users. In this instance, a greater effort may be necessary to accommodate all users (pedestrians, bicyclists, transit, motor vehicles, and trucks) elsewhere within the right-of-way, within the same transportation corridor or on adjacent roadways that provide similar access to a route or destination. Provide documentation related to the law or City Plan.
- The activities are ordinary maintenance or emergency repair activities designed to keep assets in serviceable condition (i.e. mowing, cleaning, sweeping, spot repair, and surface treatments such as chip seal or interim measures).
- The facility or amenity is proposed along a developable parcel.
- Project funds are restricted or constrained to specific purposes. Attach documentation related to grant funding purposes.
- Funding sources have been identified and/or allocated for construction within five years. Provide documentation related to allocated funding as an attachment.
- Postponement of a project will not be contrary to the public health and safety and is not detrimental to the orderly development of property, as defined in Chapter 12 of the Fresno Municipal Code.

Project Information:

PW File #	<u>12102</u>	PW Project #	<u>PW00785</u>
Project Manager	<u>Steve Delsid</u>	Project Title	<u>First St Grind and Overlay</u>
Project Location	<u>First Street from Herndon Avenue to Alluvial Avenue</u>		
Project Description	<u>First Street roadway grind and overlay from Herndon Avenue to Alluvial Avenue.</u>		
Exception Explanation	<u>For the small segment of missing sidewalk along First Street, the empty parcel is developable.</u>		



Public Works Assistant Director or Manager

8/10/2020

Date



Scott Mozier, PE, TE, Public Works Director

10/15/2020

Date

CITY OF FRESNO - PUBLIC WORKS DEPARTMENT COMPLETE STREETS POLICY DIRECTOR EXCEPTION REQUEST

The City of Fresno has made a commitment to plan, design, and construct complete streets where feasible. If one or more of the following conditions are met, exceptions to providing for all modes in each completed project may be authorized by the Public Works Director.

Please check all exceptions that apply and provide explanation below:

- An effected roadway prohibits, by law or adopted City plan, the use by specified users. In this instance, a greater effort may be necessary to accommodate all users (pedestrians, bicyclists, transit, motor vehicles, and trucks) elsewhere within the right-of-way, within the same transportation corridor or on adjacent roadways that provide similar access to a route or destination. Provide documentation related to the law or City Plan.
- The activities are ordinary maintenance or emergency repair activities designed to keep assets in serviceable condition (i.e. mowing, cleaning, sweeping, spot repair, and surface treatments such as chip seal or interim measures).
- The facility or amenity is proposed along a developable parcel.
- Project funds are restricted or constrained to specific purposes. Attach documentation related to grant funding purposes.
- Funding sources have been identified and/or allocated for construction within five years. Provide documentation related to allocated funding as an attachment.
- Postponement of a project will not be contrary to the public health and safety and is not detrimental to the orderly development of property, as defined in Chapter 12 of the Fresno Municipal Code.

Project Information:

PW File #	<u>12271</u>	PW Project #	<u>PW00797</u>
Project Manager	<u>John Honey</u>	Project Title	<u>S. Van Ness Industrial Imp.</u>
Project Location	<u>South Van Ness Industrial Area (see attached vicinity map)</u>		
Project Description	<u>See Attachment</u>		
Exception Explanation	<u>See Attachment</u>		



Public Works Assistant Director or Manager 10/1/2020
Date



Scott Mozier, PE, TE, Public Works Director 10/15/2020
Date

Project description and outline of scope of work (Per EDA Grant Application):

The project components include curb and gutter replacement, street widening/pavement as needed, pavement resurfacing (including grind & overlay), storm drain infrastructure (up-sizing existing flood control master and ancillary facilities per flood control's master plan), traffic access & circulation, data/fiber placement and safety enhancements.

The deteriorating conditions of infrastructure in the South Van Ness Industrial area are a major obstacle to existing businesses looking to expand as well as a hindrance in the attraction of new businesses. Project beneficiaries have made the City aware that the narrow, pot-holed streets and flooding during the rainy winter months make it nearly impossible for their semi-trucks, trailers and employees to egress and ingress and severely hinder any new development. The severe bottlenecks that occur as vehicles navigate through these streets cause timely delays in the receipt and transport of goods.

Noted exceptions:

The project accommodates the complete streets policy for the following streets:

- East Ave from California to Butler
- Pearl Street from Hamilton to Butler
- Hamilton Ave from East to Fulton
- California Ave from East to S. Van Ness.

The project was unable to accommodate the complete streets policy for the following streets:

- Los Angeles between Broadway and H Street – Road is partially constrained by building being in close proximity to the road. Also, there is vacant property on the south side of the road that may develop and construct sidewalk.
- California between S. Van Ness and Cherry – Road is constrained on the north side by a railroad track and constrained on the south by power poles and building near the road.

Adjacent roadways provide complete street access for these two segments of Los Angeles and California.

These two segments of Los Angeles and California may have been granted a sidewalk waiver at the time of development per FMC Sec. 13-208

Portion of FMC SEC. 13-208. - STREET IMPROVEMENTS. DEDICATION.

(f) Whenever street improvements are required, concrete sidewalks, curbs, gutters, and driveway approaches shall be provided or repaired (except for damage

caused by roots of trees located in city streets) along all street frontages in accordance with current standard specifications, with the following exceptions:

(1) Sidewalk Waivers. A deviation to omit sidewalks may be granted pursuant to Section 12-1018 of this Code relating to modification of subdivision requirements, or by the Director pursuant to the provisions of Section 13-216, in accordance with the following:

(i) Local Streets. Waivers of sidewalk requirements on local streets may be made in residential zone districts where the average lot size is twelve thousand five hundred square feet or more in area, and in the C-M, M-1-P, M-1, M-2 and M-3 zone districts. The approval of any such waiver shall be based upon the nature of development in the general area and not solely upon an individual property.

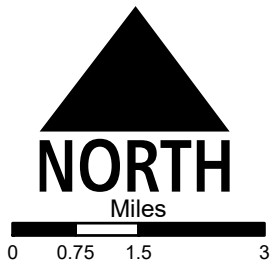
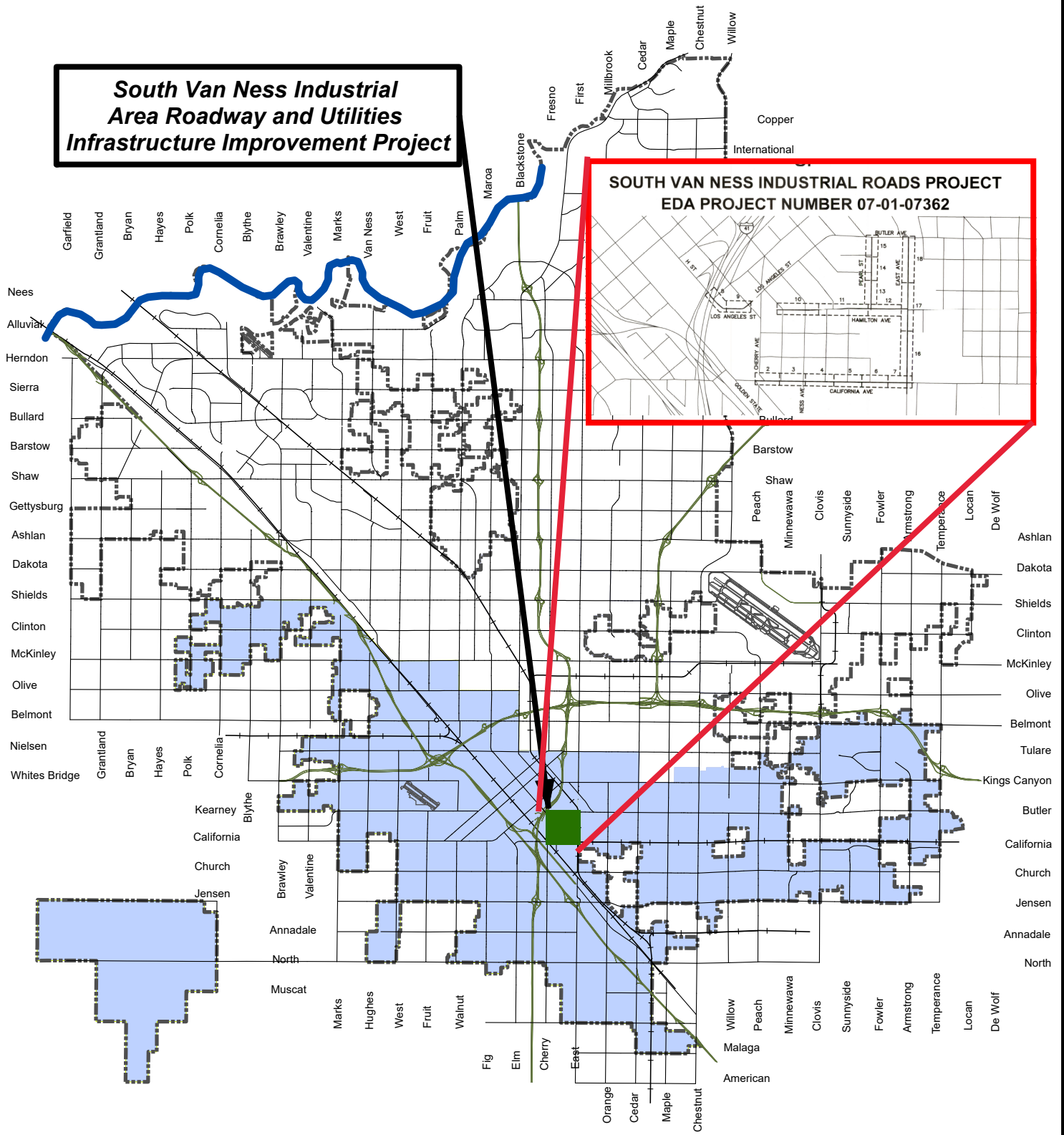
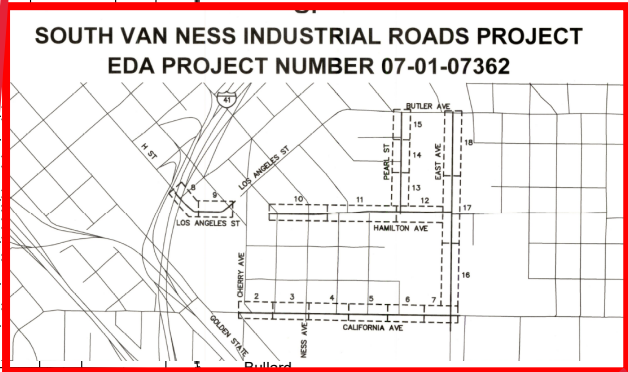
(ii) Major Streets. Waiver of sidewalk requirements on major streets may occur when associated with development entitlements in the M-2, M-3 and R-M zoning districts if the Director determines that it will be physically impractical or infeasible to install a sidewalk in the area, and that the waiver of the sidewalk requirement will not be detrimental to the public safety. In addition to the consideration of other criteria which may be established by the Director, a determination waiving sidewalk requirements shall not be made unless the Director finds as follows:

1. That the waiver will not presently or prospectively have a detrimental effect upon general pedestrian safety, school routes, and pedestrian traffic resulting from mass transit service.

2. That no other sidewalk exists along the same side of the major street on which the waiver is requested between the two intersecting major streets on either side of the waiver area.

3. The major street on which the waiver is requested is paved to a width sufficient that no travel lane is within eight feet of the curb along the frontage of the sidewalk waiver.

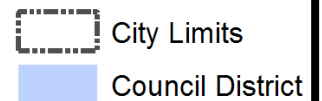
South Van Ness Industrial Area Roadway and Utilities Infrastructure Improvement Project



VICINITY MAP

South Van Ness Industrial Area Roadway and Utilities Infrastructure Improvement Project

Project ID: PW00797
Council District: 3 & 5



Grant Application Package

Opportunity Title:	FY 2016 Economic Development Assistance Programs • Appl
Offering Agency:	Economic Development Administration
CFDA Number:	11.300
CFDA Description:	Investments for Public Works and Economic Development F
Opportunity Number:	EDAP2016
Competition ID:	PW-EAA-C
Opportunity Open Date:	10/26/2015
Opportunity Close Date:	10/31/2018
Agency Contact:	Please contact the representative for your state. A complete list of EDA representatives is available on EDA's website at http://www.eda.gov/contact/ .

This opportunity is only open to organizations, applicants who are submitting grant applications on behalf of a company, state, local or tribal government, academia, or other type of organization.

Application Filing Name:

Select Forms to Complete

Mandatory

- [Application for Federal Assistance \(SF-424\)](#)
- [ED-900 General Application for EDA Programs](#)
- [ED-900A Additional Assurances for Construction or Non-Construction](#)
- [ED-900C EDA Application Supplement for Construction Programs](#)
- [ED-900E Calculation of Estimated Relocation and Land Acquisition Expenses](#)
- [Assurances for Construction Programs \(SF-424D\)](#)
- [Budget Information for Construction Programs \(SF-424C\)](#)
- [CD511 Form](#)

Optional

- [ED-900P Proposal for EDA Assistance](#)
- [Attachments](#)
- [Disclosure of Lobbying Activities \(SF-LLL\)](#)
- [ED-900B Beneficiary Information Form](#)

Instructions

[Show Instructions >>](#)

This electronic grants application is intended to be used to apply for the specific Federal funding opportunity referenced here.

If the Federal funding opportunity listed is not the opportunity for which you want to apply, close this application package by clicking on the "Cancel" button at the top of this screen. You will then need to locate the correct Federal funding opportunity, download its application and then apply.

Application for Federal Assistance SF-424

* 1. Type of Submission: <input type="checkbox"/> Preapplication <input checked="" type="checkbox"/> Application <input type="checkbox"/> Changed/Corrected Application	* 2. Type of Application: <input checked="" type="checkbox"/> New <input type="checkbox"/> Continuation <input type="checkbox"/> Revision	* If Revision, select appropriate letter(s): <input type="text"/> * Other (Specify): <input type="text"/>
--	--	--

* 3. Date Received: <input type="text" value="Completed by Grants.gov upon submission."/>	4. Applicant Identifier: <input type="text"/>
--	--

5a. Federal Entity Identifier: <input type="text" value="U.S. EDA"/>	5b. Federal Award Identifier: <input type="text"/>
---	---

State Use Only:

6. Date Received by State: <input type="text" value="01/28/2011"/>	7. State Application Identifier: <input type="text" value="CA SPOC does not review"/>
--	---

8. APPLICANT INFORMATION:

* a. Legal Name:

* b. Employer/Taxpayer Identification Number (EIN/TIN): <input type="text" value="94-6000338"/>	* c. Organizational DUNS: <input type="text" value="0718878550000"/>
--	---

d. Address:

* Street1:	<input type="text" value="2600 Fresno Street, 2nd Floor"/>
Street2:	<input type="text" value="Mayor's Office"/>
* City:	<input type="text" value="FRESNO"/>
County/Parish:	<input type="text" value="FRESNO"/>
* State:	<input type="text" value="CA: California"/>
Province:	<input type="text"/>
* Country:	<input type="text" value="USA: UNITED STATES"/>
* Zip / Postal Code:	<input type="text" value="93721-0000"/>

e. Organizational Unit:

Department Name: <input type="text" value="Office of Mayor and City Mgr"/>	Division Name: <input type="text" value="Office of Economic Development"/>
---	---

f. Name and contact information of person to be contacted on matters involving this application:

Prefix: <input type="text" value="Mr."/>	* First Name: <input type="text" value="LARRY"/>
Middle Name: <input type="text"/>	
* Last Name: <input type="text" value="WESTERLUND"/>	
Suffix: <input type="text"/>	
Title: <input type="text" value="DIRECTOR"/>	

Organizational Affiliation:

* Telephone Number: <input type="text" value="(559) 621-8355"/>	Fax Number: <input type="text" value="(559) 621-7990"/>
---	---

* Email:

Application for Federal Assistance SF-424

*** 9. Type of Applicant 1: Select Applicant Type:**

C: City or Township Government

Type of Applicant 2: Select Applicant Type:

Type of Applicant 3: Select Applicant Type:

* Other (specify):

*** 10. Name of Federal Agency:**

Economic Development Administration

11. Catalog of Federal Domestic Assistance Number:

11.300

CFDA Title:

Investments for Public Works and Economic Development Facilities

*** 12. Funding Opportunity Number:**

EDAP2016

* Title:

FY 2016 Economic Development Assistance Programs • Application submission and program requirements for EDA's Public Works and Economic Adjustment Assistance programs.

13. Competition Identification Number:

PW-EAA-C

Title:

14. Areas Affected by Project (Cities, Counties, States, etc.):

Add Attachment

Delete Attachment

View Attachment

*** 15. Descriptive Title of Applicant's Project:**

Infrastructure, Innovation and Investment: Building on Fresno's Manufacturing Cluster

Attach supporting documents as specified in agency instructions.

Add Attachments

Delete Attachments

View Attachments

Application for Federal Assistance SF-424

16. Congressional Districts Of:

* a. Applicant

* b. Program/Project

Attach an additional list of Program/Project Congressional Districts if needed.

Add Attachment

Delete Attachment

View Attachment

17. Proposed Project:

* a. Start Date:

* b. End Date:

18. Estimated Funding (\$):

* a. Federal	<input type="text" value="3,044,202.00"/>
* b. Applicant	<input type="text" value="1,304,658.00"/>
* c. State	<input type="text" value="0.00"/>
* d. Local	<input type="text" value="0.00"/>
* e. Other	<input type="text" value="0.00"/>
* f. Program Income	<input type="text" value="0.00"/>
* g. TOTAL	<input type="text" value="4,348,860.00"/>

*** 19. Is Application Subject to Review By State Under Executive Order 12372 Process?**

a. This application was made available to the State under the Executive Order 12372 Process for review on

b. Program is subject to E.O. 12372 but has not been selected by the State for review.

c. Program is not covered by E.O. 12372.

*** 20. Is the Applicant Delinquent On Any Federal Debt? (If "Yes," provide explanation in attachment.)**

Yes No

If "Yes", provide explanation and attach

Add Attachment

Delete Attachment

View Attachment

21. *By signing this application, I certify (1) to the statements contained in the list of certifications and (2) that the statements herein are true, complete and accurate to the best of my knowledge. I also provide the required assurances** and agree to comply with any resulting terms if I accept an award. I am aware that any false, fictitious, or fraudulent statements or claims may subject me to criminal, civil, or administrative penalties. (U.S. Code, Title 218, Section 1001)**

** I AGREE

** The list of certifications and assurances, or an internet site where you may obtain this list, is contained in the announcement or agency specific instructions.

Authorized Representative:

Prefix: * First Name:

Middle Name:

* Last Name:

Suffix:

* Title:

* Telephone Number: Fax Number:

* Email:

* Signature of Authorized Representative:

* Date Signed:



ED-900 – General Application for EDA Programs

A. Applicant Information

A.1. EDA Application Identifier (if available):

A.2. Please identify all applicants for this project:

	Name	SAM.gov CAGE Code	SAM.gov Registration Expiration Date	Fiscal Year End Date (mm/dd)
Lead Applicant	CITY of FRESNO - California	47PF6	11/19/2016	06/30
Co-Applicant 1				

B. Project Information

B.1. Define and describe the region in which the investment (project) is located

The area known as Fresno County was discovered by Spaniards during a search for suitable mission sites. In 1846, this area became part of the United States as a result of the Mexican War. Fresno County was formed in 1856 from parts of Mariposa and Tulare counties. The town of Fresno was incorporated in 1885, after a period of rapid growth, resulting from the newly built Southern Pacific Railroad line and relocation of the County seat to the town.

Agriculture is the backbone of the Fresno area, employing 20 percent of the workforce and providing more than \$3.5 billion of the local economy. A majority of America's produce is grown in California's Central Valley, and Fresno County is the number one agriculture producing county in the United States. By 2005, more than 7,500 farmers were growing 250 types of crops on one million acres of some of the world's most productive farmland, located in Fresno County. Major crops include grapes, cotton, cattle, tomatoes, milk, plums, turkeys, oranges, peaches and nectarines. A large food processing industry has developed around the agricultural activity and a number of canning, curing, drying and freezing plants are located in the area.

With a strong and growing manufacturing cluster, Fresno, the fifth largest city in the state, is the hub of California's San Joaquin Valley and is the regional base of infrastructure, innovation and investment.

The project area is comprised of 355 acres made up of three contiguous former redevelopment project areas, two Census tracts (4 and 12.01) and two zip codes (93721 and 93701). Referred to as the South Van Ness Industrial area, the project area is generally southwest of downtown Fresno, bounded

by Church Avenue to the south, Cherry Avenue to the west, Butler Avenue to the north, and Third Street to the east. Benefits for this blighted area include 327 new jobs and \$62 million in private investment, giving this project a jobs to funding ratio of 5:1.

B.2. Describe and outline the scope of work for the proposed EDA investment

The project components include curb and gutter replacement, street widening/pavement as needed, pavement resurfacing (including grind & overlay), storm drain infrastructure (up-sizing existing flood control master and ancillary facilities per flood control's master plan), traffic access & circulation, data/fiber placement and safety enhancements. EDA Req. \$3,044,202.

The deteriorating conditions of infrastructure in the South Van Ness Industrial area are a major obstacle to existing businesses looking to expand as well as a hindrance in the attraction of new businesses. Project beneficiaries have made the City aware that the narrow, pot-holed streets and flooding during the rainy winter months make it nearly impossible for their semi-trucks, trailers and employees to egress and ingress and severely hinder any new development. The severe bottlenecks that occur as vehicles navigate through these streets cause timely delays in the receipt and transport of goods.

B.3. Economic development needs

B.3.a. Does the region in which the project will be located have a Comprehensive Economic Development Strategy (CEDS)?

Yes If Yes, what is the source?

Comprehensive Economic Development Strategy for the City of Fresno completed and approved August, 2015

No If No, then please check one:

B.3.a.i. An alternate strategic planning document that governs this investment is attached.

Add Attachment

Delete Attachment

View Attachment

B.3.a.ii. This investment is to develop a "strategy grant" to develop, update or refine a CEDS.

B.3.b. Describe the economic conditions of your region and the needs that this project will address.

Unemployment in the City of Fresno, compared to that of the U.S. is much higher. Unemployment in Fresno has more than doubled the national rate in 2014 and 2015 and the 2014 per capita income was 67.3% that of the U.S.

B.4. Applicant's capability

Briefly describe the applicant's capability to administer, implement, and maintain the project.

Within the City of Fresno's Department of Public Works, there is a staffed and dedicated Project Management Section. The Project Management section manages capital improvements projects funded through local, state or federal public financing programs.

These infrastructure projects are often designed by private consultants and are generally constructed by private contractors. The Project Management Section oversees complex projects from preliminary design to final plan

approval and completion of construction. In addition to handling Public Works Projects, these project managers also oversee Fire, Police, Public Utilities and Parks, After School & Community Services projects. The project manager's mission is to deliver these critical infrastructure projects on time and within budget.

B.5. List and describe the strategic partners and organizations to be engaged in this project

The City's Industrial Council, the Economic Development Corporation, the Fresno County Metropolitan Flood Control District, the Public Works Dept., Office of Econ. Dev. Fresno State Univ. and the Mayor and City Council.

B.6. Describe the investment (project) impact and fit with EDA funding priorities

1. National Strategic Priorities: the proposed project enhances public incentives for manufacturers through better planning, coordination across government agencies and partnerships with the private sector. The EDA investment, paired with local funds, has the capacity to serve as an economic catalyst to major expansions among innovative, technology-oriented and clean Small and Mediums Sized Enterprises (SMEs), some of which hold several patents. It will support the Obama Administration's "Strategy for American Innovation," and EDA's new investment criteria and its emphasis on clean SMEs, sustainable growth, innovation, research, development and commercialization and technology-led economic development.

This is a demonstrable initiative underscoring the importance of infrastructure to industry growth, an issue consistently raised by the EDA, the Administration and the local Comprehensive Economic Development Strategy (CEDs). Similar to the call nationally to replace or repair aging infrastructure, the CEDs also underscores more investment in infrastructure, saying "local government will need to support and encourage the development of infrastructure and utilities in areas such as water and manufacturing."

In addition, the project is located within the footprint of the Investing in Manufacturing Communities Partnership (IMCP) designation by the US Economic Development Administration for the Central Valley, which is focused on accelerating the resurgence of manufacturing and export-oriented industries especially related to the robust agriculture and food-processing cluster in the region. The IMCP consortium in Fresno - Central Valley Ag-Plus - has already begun to leverage critical players across multiple sectors in the region to identify infrastructure, workforce, and other challenges towards growing our manufacturing base. This proposal is a perfect opportunity to leverage other EDA and local dollars towards the implementation of the IMCP designation of EDA - by investing in infrastructure to support a local manufacturing district, this will provide more opportunity for manufacturing business expansion and job creation.

B.7. Identify the proposed time schedule for the project

August, 2016 through October, 2018. Potential delays may be caused by rain during winter months.

B.8. Economic impacts of the project

B.8.a. Please describe the economic impacts of the project:

The project supports a return to purchase products made in America, supports small and medium sized enterprises by coupling EDA's investment with public funds and individual investment and helps to encourage expansion to create at least 327 new jobs lost by the recession. The project also promulgates research, development and commercialization, assists in the elimination of blight in a large industrial area, helps to grow a healthy manufacturing cluster, disseminates the project as a viable means for other Valley communities to emulate, and encourages sustainable growth through in-fill development.

In addition, the project provides clean industrial growth in the area by serving existing companies planning expansion; increases activity for the lagging construction sector and associated industries; increases the number of higher-paying, high-skilled jobs; increases assessed property valuation; and, creates a direct connection between the South Van Ness Industrial area and the downtown area, infusing new capital into downtown.

The California High Speed Rail (HSR) Authority has authorized the first link of High Speed Rail in Fresno beginning next year, ultimately connecting to Los Angeles and the Bay Area. About \$3 billion is initially being invested into the proposed rail station and HSR lines. This type of mass transit has several benefits, including less dependence on vehicle miles travelled as that has a negative impact on air quality.

In the past, the area was quick to raze abandoned and even historic buildings. Now, these facilities are being renovated and re-used by companies. Infrastructure projects can often mean ripping out multiple levels of infrastructure and old pavement, creating a mountain of debris that in the past would have been transported to a landfill. This project was specifically designed in cooperation with Public Works and the Metropolitan Flood Control District to supplement, not duplicate, current plans. Whenever possible, existing infrastructure will be re-used. The most significant cost in the project budget is for asphalt. Streets within the area are barely usable and hinder transportation to SR 99 and Freeway's 41 and 180, major corridors surrounding the target area. Existing, pot-holed asphalt will be extracted, re-ground and re-used. On-site improvements will include renovation of aged facilities.

A local example of the impact infrastructure has on expansion is Jain Irrigation, one of the companies involved in this proposal. In 2009, the company was seeking to expand, but planned instead to move because a nearby road was in poor condition and was constantly flooding. Following conversations between the principals of Jain and the former Redevelopment Agency of the City of Fresno (Agency), the Agency invested about \$1 million to upgrade and install new street pavement and storm drain inlets. As a result, Jain Irrigation signed a 20-year lease with an option to buy and hired more than 300 new employees, well beyond the company's initial agreement to create 80 new positions.

Although Fresno lost some manufacturing as a result of the recession, County Business Pattern census data over a 10-year period shows manufacturing is a high-growth industry, with a 4 percent per year salary

increase in manufacturing from 1997-2007. The average starting wage in the industry with a simple high school diploma is slightly more than \$3,000 per month. According to the California Economic Development Department (EDD), this is very high in comparison to other industries and within the range of Fresno's median household income of \$43,036.

This narrative fully describes the economically distressed levels in Fresno ... (cont. in attachment)

B.8.b. Please identify the total estimated jobs and private investment that is expected to be generated by this project:

Estimated Jobs Created	Estimated Jobs Retained	Estimated Private Investment
327	340	\$35,000,000.00

B.8.c. Please identify the source of Estimates above (check as many as apply):

- Letters from Beneficiaries of the Project
- Input/Output Model (e.g. IMPLAN, REMI)
- Comparison to Similar Projects
- Other Method (specify below)

B.9. Beneficiaries of the project

Beneficiary Name	NAICS Code	Estimated Jobs Created	Estimated Jobs Retained	Estimated Private Investment
OK Produce	424480	101	240	\$20,000,000.00
Lyons Magnus	311400	26	0	\$10,000,000.00
Jain Irrigation	333111	200	100	\$5,000,000.00
Total		327	340	\$35,000,000.00

B.10. Non-EDA funding for the project

B.10.a. Are all non-EDA funds committed to the project, available as needed, and not conditioned or encumbered in any way that would preclude their use consistent with the purpose of the project?

- Yes
- No (explain below)

B.10.b. Identify the source, nature and amount of all non-EDA funds.

Source	Amount	Date Available	Type	Restriction/Comments
City Revenues 2	\$1,300,000.00	05/01/2016	Cash	n/a

B.10.c. Does the applicant plan to seek other federal financial assistance as part of or in connection with this project? If so, please describe the source, amount and any terms and conditions of the funding, and when the funding will be available for use by the applicant.

Yes (explain below) No

B.10.d. Please attach documentation confirming non-EDA (matching or cost share) funding:

Add Attachment

Delete Attachment

View Attachment

B.11. Justification for sole source procurement

Will you contract work to complete part or all of this project?

B.11.a. No

B.11.b. Yes If yes, will contracts be awarded by competitive bid?

B.11.b.i. Yes

B.11.b.ii. No

If contracts will not be awarded by competitive bid, please provide a justification. A cost analysis will be necessary when adequate price competition is lacking, and for sole source procurements.

B.12. Equipment

Will any funds be used to purchase equipment?

B.12.a. No

B.12.b. Yes If yes, will project funding be used to install the equipment?

Yes

No

Please attach a list, including cost, description, purpose, and estimated useful life of any equipment that will be purchased as a part of this project.

Add Attachment

Delete Attachment

View Attachment

C. Regional Eligibility

C.1. Region

Define the area/region that is the basis for the applicant's claim of eligibility. EDA will review and evaluate documentation submitted by the applicant to verify and determine eligibility.

City of Fresno, with an average unemployment rate of 11.1%; and per capita income of: \$20,231. (American Community Survey 1-Yr.Est. U.S.Census)

C.2. Source of data provided for regional eligibility determination

Check the box denoting what data source you used to establish eligibility:

- C.2.a. The most recent ACS data published by the U.S. Census Bureau.
- C.2.b. The most recent other federal data for the region in which the project is located (e.g., U.S. Census Bureau or the Bureaus of Economic Analysis, Labor Statistics, Indian Affairs, etc.).
- C.2.c. If no federal data are available, the most recent data available through the state government for the region in which the project is located.
- C.2.d. Other data to substantiate regional eligibility based on a "Special Need" as defined in 13 C.F.R. § 300.3.

Please attach a copy of the documentation used to support your claim of eligibility:

Add Attachment

Delete Attachment

View Attachment

C.3. Economic Distress

Check all that apply in establishing regional eligibility (see FFO for more details):

- C.3.A. Unemployment rate**
- C.3.B. Per capita income**
- C.3.C. Special need**, including:
 - Substantial out-migration or population loss;
 - Underemployment; that is, employment of workers at less than full-time or at less skilled tasks than their training or abilities permit;
 - Military base closure or realignment, defense contractor reductions-in-force, or U.S. Department of Energy defense-related funding reductions;
 - Natural or other major disasters or emergencies;
 - Extraordinary depletion of natural resources;
 - Closing or restructuring of an industrial firm or loss of other major employer;
 - Negative effects of changing trade patterns; or
 - Other circumstances set forth in the applicable FFO (please explain below).

C.4. Substantial direct benefit

If the project does not meet any of the criteria above, is it located in an Economic Development District (EDD), and will it provide substantial direct benefit to residents of an area within that EDD that does meet the distress criteria?

Yes

No

Which Economic Development District?

Please explain how the proposed project will provide a substantial direct benefit to this geographic area within the EDD.

D. Budget and Staffing

To be completed by applicants for non-construction assistance only

D.1. Budget justification

D.2. Indirect costs

D.3. Key applicant staff

E. Administrative Requirements

E.1. Civil rights

E.1.a. Does the applicant understand and agree to comply with all applicable civil rights requirements (see 13 C.F.R. § 302.20)?

Yes

No (explain below)

E.1.b. Do identified "Other Parties," businesses that will create and/or save fifteen or more jobs as a result of the EDA project, understand and agree to comply with all applicable civil rights requirements, including the requirement to provide signed assurances of compliance (ED-900B)?

Not Applicable (No Other Parties Identified)

Yes

No (explain below)

E.2. Lobbying certifications

Will you be able to comply with federal requirements regarding lobbying?

- Yes No (explain below)

E.3. Compliance with Executive Order 12372, State Single Point of Contact (SPOC)

Does the state in which the project will be located have a project review process that requires submission to a Single Point of Contact (SPOC)?

- E.3.a. No. Go to Question E.4
 E.3.b. Yes

If Yes, does this request for EDA investment assistance meet the SPOC process established by the state?

- E.3.b.i. No E.3.b.ii. Yes

Please explain why not

If Yes, were SPOC comments/clearance received?

- E.3.b.ii.a. Yes

Please attach the comments/clearance:

Add Attachment

Delete Attachment

View Attachment

- E.3.b.ii.b. No. The review period has expired and no comments were received.
 E.3.b.ii.c. No. Comments have been requested but the review period has not yet expired.

Please attach evidence of your request for comments:

Add Attachment

Delete Attachment

View Attachment

E.4. Single Audit Act Requirement

E.4.a. Does the applicant understand and agree to the requirements of subpart F of 2 C.F.R. part 200 regarding federal audits?

Yes No

E.4.b. Is the applicant currently audited under the Single Audit Act?

E.4.b.i. No

E.4.b.ii. Yes, If yes:

E.4.b.ii.a. What is the date of the most recent audit?

E.4.b.ii.b. Was this audit submitted to the Federal Audit Clearinghouse?

Yes No

F. Requirements for Non-Governmental Applicants (Excluding Public Universities and Certain District Organizations)

As indicated below, non-governmental applicants (excluding public universities and district organizations) must also provide a copy of the following items, either using the Attachments form that is part of the application package downloaded from www.Grants.gov or providing a hard copy.

F.1. Non-profit organizations must provide a current Certificate of Good Standing from the State in which they are incorporated.

[Add Attachment](#)[Delete Attachment](#)[View Attachment](#)

F.2. New non-profit organization applicants must provide their Articles of Incorporation and By-Laws. Non-profits with an active EDA grant must either provide a) a revised copy of their Articles of Incorporation or By-Laws if these have been amended or b) a statement certifying that there has been no change in the organization's Articles of Incorporation or By-Laws.

[Add Attachment](#)[Delete Attachment](#)[View Attachment](#)

F.3. Non-profit organizations must provide a resolution passed by a general purpose political subdivision of a State (e.g., local government entity) or a letter signed by an authorized representative of a local government acknowledging that the applicant is acting in cooperation with officials of the political subdivision. EDA may waive this requirement for certain projects of significant regional or national scope (see 13 CFR § 301.2(b)).

[Add Attachment](#)[Delete Attachment](#)[View Attachment](#)

F.4. If applying for a construction or RLF investment, an applicant must afford the appropriate general purpose governmental authority a minimum of 15 days to review and comment on the proposed project (13 CFR § 302.9(a)).

Will the applicant be able to provide these comments?

Yes

Not applicable, because the applicant is not applying for a construction or RLF grant

Not applicable, because this requirement has been satisfied under an existing RLF plan

No, for another reason (explain below)

Instructions for Form ED-900

A. Applicant Information

A.1. EDA Application Identifier – If EDA has previously provided an identifier for your proposal/application, please enter that identifier here. Otherwise, leave blank.

A.2. Please identify all applicants for this project:

The Lead Applicant should be the party who is responsible for handling disbursement of funds and reporting to EDA.

Note that Sam.gov registration is required of all EDA applicants and awardees. Please list the relevant CAGE Code and SAM.gov expiration data for all applicants and co-applicants (if any).

B. Project Information

B.1. Define and describe the region in which the investment (project) is located

Clearly and concisely describe the region where the project will be located, including the specific geographic location of the project within the region, as well as background on the assets of the area, which may include clusters, and workforce, physical, educational and financial infrastructure.

B.2. Describe and outline the scope of work for the proposed EDA investment

List specific activities that will be undertaken and the specific deliverables that will be produced as a result of this investment. The description of the proposed project must include a clear statement of the overall purpose of the project, and key milestones and an associated schedule for when the project could start, when key milestones could be achieved, and when the project is anticipated to be completed.

Applicants for construction assistance (including design and engineering assistance) should also include a statement of project components. Indicate if the proposed project involves the construction of a new facility or facilities or the enlargement, expansion, renovation, or replacement of an existing facility or facilities. Describe the existing facility and proposed project components in terms of dimensions, capacities, quantities, etc.

Applicants for Partnership Planning Assistance should provide a narrative on the economic development activities that will be undertaken including managing and maintaining the CEDS process.

Applicants for Short Term Planning Assistance should provide a narrative explaining how the proposed scope of work will enhance economic development planning capacity of the identified region. Include any relationship or collaboration with other public and private entities. Please explain how the strategy will expand the capacity of public officials and economic development organizations to work effectively with employers and enable the region to plan and coordinate the use of available resources to support economic recovery and the development of a regional economy and/or develop innovative approaches to economic revitalization in the region.

Applicants for State Planning Assistance should provide a narrative outlining the proposed scope of work for the project. Include the relationship to any existing CEDS or similar planning processes in the region and the goals and objectives of the proposed project.

B.3. Economic development needs

Except for grants to fund developing, updating or refining a CEDS as described in 13 C.F.R. § 303.7, the region in which Public Works or Economic Adjustment projects will be located must have a CEDS with which the project is consistent.

B.3.a. Does the region in which the project will be located have a Comprehensive Economic Development Strategy (CEDS)?

If Yes, what is the source? *Note: If you are unsure if your region has a CEDS, please contact your local District Organization. In areas without a District Organization, CEDS may also be obtained at the City, County, or State level.*

If No, then please check one of the indicated options:

B.3.a.i. There is an alternate strategic planning document that will govern this investment. Please identify the strategy and provide a copy of this planning document, either by attaching the document to this application or submitting a hard copy.

B.3.a.ii. This investment is to create a strategy plan to develop, update or refine a CEDS. Please explain how the strategy will expand the capacity of public officials and economic development organizations to work effectively with employers and enable the region to plan and coordinate the use of available resources to support economic recovery and the development of a regional economy and/or develop innovative approaches to economic revitalization in the region.

B.3.b. Briefly describe the economic conditions of the region described in B.1, as well as the economic adjustment problems or economic dislocations the region has experienced (or is about to experience) and the regional impact of these conditions. How does the project address the economic development needs of the region and the goals and objectives of the CEDS for the region or the alternate strategic planning document described in section b below? See 13 C.F.R. part 303.

B.4. Applicant's capability

Briefly describe the applicant's capability to administer, implement, and maintain the project.

B.5. List and describe strategic partners and organizations to be engaged in this project

Describe existing regional partnerships (if any) that are directly engaged in supporting the proposed project, including a discussion of the extent of participation of government agencies, private sector interests, education providers, non-profits, community and labor groups, workforce boards, utilities, etc.

B.6. Describe the investment (project) impact and fit with EDA funding priorities

Concisely document how the proposed project aligns with one or more of EDA's investment priorities. Applicants that propose projects that do not align with EDA's investment priorities will not be as competitive as those that do. Applicants are strongly encouraged to review EDA's investment priorities, as outlined in the applicable Federal Funding Opportunity (FFO) announcement on www.Grants.gov.

B.7. Proposed time schedule for the project

Provide a proposed time schedule for completion of the project, including when (month/year) the project will begin and end. Explain any potential issues that could affect project implementation.

B.8. Economic impacts of the project

Provide a clear and compelling justification for the long-term potential economic impact of the proposed project, through anticipated job creation or retention, private investment leveraging, number of businesses or collaborations supported, or other appropriate measures. All job and private investment estimates should reflect the anticipated impact within nine years of the potential EDA investment. Applicants must attach letters of commitment from any identified beneficiaries.

For all other measures, applicants should clearly identify the expected time frame. In all cases, applicants must document the benefit and provide third-party data or information available to support these claims.

B.9. Beneficiaries of the project

If applicants have identified specific private sector employers that are expected to create and/or save jobs as a result of the project, applicants should list those beneficiaries in the table provided. All job and private investment estimates should reflect the anticipated impact within nine years of the potential EDA investment.

NAICS Code: The NAICS code for the major industry category of the beneficiary company (see www.naics.com for a searchable list).

Jobs Created: The number of jobs that the company expects to create as a result of the project.

Jobs Retained: The number of jobs that the company expects to retain as a result of the project.

Private Investment: The amount of private investment that the company expects to make in its business/ community as a result of the project.

Form ED-900B must be completed by each beneficiary that expects to create and/or save fifteen or more jobs as a result of the project.

B.10. Non-EDA funding for the project

Select the appropriate response to each question. Applicants should identify the source, nature and amount of all non-EDA funds, including in-kind contributions (non-cash contributions of space, equipment, services, or assumptions of debt). Explain the status of all funding commitments, including the date the funds will be available from each source, and describe any conditions or restrictions on the use of such funds. If in-kind contributions are included, explain the basis on which they are valued. If so, please describe the source, amount and any terms and conditions of the funding, and when the funding will be available for use by the applicant. Please attach evidence of commitment from all funding sources. For example, if bonds are contemplated as match, counsel opinion of the applicant's bonding authority and eligibility of the bonds for use as match, along with full disclosure of the type of bonds and the schedule of the applicant's intended bond issue, are required.

B.11. Justification for sole source procurement

Select the appropriate response to each question.

B.12. Equipment

Select the appropriate response to each question.

C. Regional Eligibility

Public Works and Economic Adjustment Assistance projects must satisfy regional eligibility requirements (see FFO for more details). This section will assist EDA in determining if the proposed project satisfies these eligibility requirements.

Planning and Technical Assistance applications: although meeting specific distress criteria is not a prerequisite for funding under these programs, the economic distress level of the region impacted by a project serves as the basis for establishing the EDA share of the total cost of the project and can inform competitiveness.

Please answer all questions completely and accurately and attach explanations and supporting documentation where applicable.

C.1. Region

Clearly define the area/region that is the basis for your claim of eligibility.

C.2. Source of data provided for regional eligibility determination

Check the appropriate box denoting what data source you used to establish eligibility. Please attach data used to establish eligibility.

C.3. Economic Distress

Check all that apply in establishing regional eligibility (see FFO for more details):

C.3.A. Unemployment rate: The project is located in a region that has an unemployment rate that is, for the most recent 24-month period for which data are available, at least one percentage point above the national unemployment rate.

C.3.B. Per capita income: The project is located in a region that has a per capita income that is, for the most recent period for which data are available, 80 percent or less of the national average per capita income.

C.3.C. Special need: The project is located in a region that has experienced or is about to experience a "Special Need" (as defined in 13 C.F.R. § 300.3) arising from actual or threatened severe unemployment or economic adjustment problems resulting from severe short-term or long-term changes in economic conditions, including: Substantial out-migration or population loss; Underemployment, that is, employment of workers at less than full-time or at less skilled tasks than their training or abilities permit; Military base closure or realignment, defense contractor reductions-in-force, or U.S. Department of Energy defense-related funding reductions; Natural or other major disasters or emergencies; Extraordinary depletion of natural resources; Closing or restructuring of an industrial firm or loss of other major employer; Negative effects of changing trade patterns; or other circumstances set forth in the applicable FFO.

C.4. Substantial Direct Benefit

A project located within an Economic Development District (EDD) that is located in a region that does not meet the economic distress criteria set forth in section C.3 above, is also eligible for EDA investment assistance if EDA determines that the project will be of "substantial direct benefit" to a geographic area within the EDD that meets the distress criteria set forth in question C.3 above by providing significant employment opportunities for unemployed, underemployed, or low-income residents of the distressed geographic area within the EDD. If applicable, identify the EDD in which the proposed project will be located, as well as the geographic area within the EDD that meets the economic distress criteria detailed in section C.3., and explain how the proposed project will provide a substantial direct benefit to this geographic area within the EDD. (See FFO for more details.)

D. Budget and Staffing

To be completed by applicants for non-construction assistance only

D.1. Budget justification

Provide a clear budget justification that identifies how funds in each line item of the budget will be utilized to support the proposed project. Explain the proposed use of any amounts budgeted for "Equipment," "Contractual," or "Other," if any, on Form SF-424A, Budget Information - Non-Construction Programs.

D.2. Indirect costs

Explain the types of indirect costs, if any, on Form SF-424A. If there are any indirect costs, please submit a copy of the current Indirect Cost Rate Agreement that your organization has with its cognizant Federal agency.

D.3. Key applicant staff

Identify key applicant staff who will undertake and complete project activities. Include a description of the knowledge, organizational experience, and expertise of individual staff members. In addition, explain how organizational resources will be used to complete project activities. For National Technical Assistance, Training and Research and Evaluation projects, specify which positions will be charged to the federal and non-federal portion of the project budget.

E. Administrative Requirements

E.1. Civil rights

Select the appropriate response, providing an explanation if "no."

E.2. Lobbying certifications

All applicants for federal financial assistance must certify that federal funds have not been used and will not be used for lobbying in connection with this request for federal financial assistance (Form CD-511). If non-federal funds have been or are planned to be used for lobbying in connection with this request for federal financial assistance, Form SF-LLL also must be completed. Applicants must comply with 13 C.F.R. § 302.10 regarding attorneys' and consultants' fees and the employment of expeditors. This regulation requires that applicants identify and disclose the amount of fees paid to anyone engaged to assist the applicant in obtaining assistance under the Public Works and Economic Development Act of 1965 (PWEDA), as amended.

E.3. Compliance with Executive Order 12372, State Single Point of Contact (SPOC)

Select the appropriate response to each question, please attach any comments that have been received. If the comment period has not yet expired or comments were not received, attach evidence of your request for comments.

E.4. Single Audit Act Requirement

Select the appropriate response to each question.

F. Requirements for Non-Governmental Applicants (Excluding Public Universities and Certain District Organizations)

As indicated, non-governmental applicants must also provide a copy of the requested items, either using the Attachments form that is part of the application package downloaded from www.Grants.gov or submitting a hard copy. Public Universities and Certain District Organizations may be exempt from this requirement, please contact your Regional Office to determine the requirements applicable to your organization.



ED-900A - Additional EDA Assurances for Construction Or Non-Construction Investments

For **ALL** investments: As a duly authorized representative of the applicant, I further certify that the applicant:

1. Understands that attorneys' or consultants' fees, whether direct or indirect, expended for securing or obtaining EDA investment assistance are not eligible costs. See 13 C.F.R. § 302.10(a).
2. Understands that conflicts of interest or appearances of conflicts of interest are prohibited and may jeopardize this application or result in the forfeiture of investment funds. A conflict of interest occurs, for example, where a representative, official, employee, architect, attorney, engineer, or inspector of the applicant, or a representative or official of the federal, State or local government, has a direct or indirect financial interest in the acquisition or furnishing of any materials, equipment, or services to or in connection with the project. See 13 C.F.R. § 302.17.
3. Will comply with the reporting requirements under the Government Performance and Results Act (GPRA) of 1993 and the GPRA Modernization Act of 2010 (GPRAMA) for measuring and reporting project performance.

For **CONSTRUCTION** investments: As a duly authorized representative of the applicant, I further certify that the applicant:

1. Will operate and maintain the facility in accordance with at least the minimum standards as may be required or prescribed by applicable federal, State and local agencies for the maintenance and operation of such facilities.
2. Will require the facility to be designed to comply with the Americans with Disabilities Act of 1990 (ADA) (42 U.S.C. 12101 et seq.), the Architectural Barriers Act of 1968 (42 U.S.C. 4151 et seq.) and the Accessibility Guidelines for Buildings and Facilities regulations, as amended (36 C.F.R. part 1191), and will be responsible for conducting inspections to insure compliance with these requirements.
3. For the two-year period beginning on the date EDA investment assistance is awarded, will refrain from employing, offering any office or employment to, or retaining for professional services any person who, on the date on which the investment assistance is awarded or within the one-year (1) period ending on that date, served as an officer, attorney, agent or employee of the Department of Commerce and occupied a position or engaged in activities that EDA determines involved discretion with respect to the award of investment assistance under PWEDA. See section 606 of PWEDA and 13 C.F.R. §302.10(b).
4. Will have no facilities under ownership, lease or supervision to be utilized in this project that are listed or under consideration for listing on EPA's List of Violating Facilities.
5. Will comply with Executive Order 12699, "Seismic Safety of Federal and Federally Assisted or Regulated New Building Construction," which imposes requirements that federally-assisted facilities be designed and constructed in accordance with the most current local building codes determined by the awarding agency or by the Interagency Committee for Seismic Safety in Construction (ICSSC) and the most recent edition of the American National Standards Institute Standards A58, Minimum Design Loads for Buildings and Other Structures.

6. Will observe and comply with federal procurement rules, as set forth in 2 C.F.R. part 200, as applicable, for award of any contracts for architectural engineering, grant administration services, or construction financed with EDA investment assistance

For **NON-CONSTRUCTION** investments: As a duly authorized representative of the applicant, I further certify that the applicant:

1. Will comply with applicable regulations regarding indirect cost rates, if indirect costs are included in the application.
2. Will comply with the requirement that this investment assistance will not provide a proprietary benefit to a private individual, for-profit corporation, or other commercial entity.

SIGNATURE OF AUTHORIZED CERTIFYING OFFICIAL

Completed on submission to Grants.gov

TITLE

Director, Office of Economic Development

APPLICANT ORGANIZATION

CITY of FRESNO - California

DATE SUBMITTED

Completed on submission to Grants.gov



ED-900C – EDA Application Supplement for Construction Programs

A. Metropolitan Area Review

A.1. Projects involving the development of hospitals, airports, libraries, water supply and distribution facilities, sewage and waste treatment works, highways, transportation facilities, water development, or land conservation within a metropolitan statistical area (MSA) require comments from the metropolitan area clearinghouse/agency. Does the proposed project involve any of the above identified developments within an MSA?

Yes No

A.2. If Yes, please attach either:

- Comments from the responsible metropolitan area clearinghouse/agency and a statement that such comments have been considered; or
- An explanation as to why comments are not available; or
- A statement indicating the date the application was made available to the appropriate metropolitan area clearinghouse/agency and units of general local government for review and certifying that the application has been before the metropolitan area clearinghouse/agency for a period of 60 days without comments or recommendations.

Add Attachment

Delete Attachment

View Attachment

B. District Organization Project Administration

B.1. Will the District Organization for the region in which the project will be located administer the project for the applicant?

Yes No

B.2. If Yes, you must certify to all of the following and indicate your certification by checking each box:

- The administration of the project is beyond the capacity of the applicant's current staff and would require hiring additional staff or contracting for such services;
- No local organization/business exists that could administer the project in a more efficient or cost-effective manner than the District Organization; and
- The District Organization will administer the project without subcontracting the work.

B.3. If the project will be administered by the District Organization and you did not certify to all of the above, explain below.

C. Preliminary Engineering Report

To be considered for assistance, all construction and design applications must include a **Preliminary Engineering Report (PER)** that at a minimum provides the following information:

- C.1. Description of project components. Provide a general description of all project components involved in the project. Indicate whether the project involves the construction of new infrastructure or facilities or the renovation or replacement of existing ones. Describe each of the project components in terms of dimensions, quantities, capacities, square footage, etc.
- C.2. A statement verifying that the project components described in the engineering report are consistent with the EDA investment project description that is provided in Section B.2 of Form ED-900. Engineering reports that describe project components that are inconsistent with the EDA investment project description in Section B.2 of Form ED-900 will not be considered valid.
- C.3. Drawings showing the general layout and location of the existing site conditions and of the project components as well as location of any project beneficiary identified in Section B.9 of Form ED-900 that provide economic justification for the project, if any. Rough dimensions and quantities for major project components should be shown and labeled on the drawings. Drawings should clearly identify the project components that are being proposed. Applicants are encouraged to clarify such drawings, for example, through color coding, labeling, and other appropriate methods.
- C.4. A feasibility analysis for the constructability of the project. Include a review of the existing conditions and note particular features, alignments, and circumstances affecting construction of project components.
- C.5. The proposed method of construction. Indicate whether construction procurement will be done through competitive bid or other method. Indicate if any portion of the project is to be done by design/build, construction management at risk, the applicant's own forces, or a third-party construction manager. If an alternate construction procurement method (other than traditional design/bid/build with sealed competitive bid process) is proposed, a construction services procurement plan must be provided to EDA for approval in accordance with EDA's regulation at 13 C.F.R. § 305.6(a).
- C.6. The number of construction contracts anticipated. If multiple contracts are proposed, describe the project components included in each contract. If separate contracts are anticipated for demolition or site work, the budget information cost classification should reflect the estimated costs for these components. If project phasing is proposed, a project phasing request must be provided to EDA for approval per EDA's regulation at 13 C.F.R. § 305.9(a).
- C.7. A current detailed construction cost estimate for each of the project components. Show quantities, unit prices, and total costs and provide a basis for the determination of construction contingencies. The total of this estimate should match the construction line item of the SF-424C.
- C.8. Real property acquisition. If the budget includes costs for acquisition of real property, include a current fair market value appraisal completed by a certified appraiser for the property to be purchased.

- C.9. A list of all permits required for the proposed project and their current status. Identify all permits required; include the timeline to obtain the permits and discuss how the permitting relates to the overall project schedule. If the project crosses a railroad right-of-way or is within a railroad right-of-way, explain any permitting or approvals that may be required from the railroad or other authority and the timeframe for obtaining these permits or approvals.
- C.10. An overall estimated project schedule. This schedule should agree with the project schedule outlined in the ED-900. Include the number of months for each of the following:
- i. design period;
 - ii. period of time to obtain required permits;
 - iii. period of time to obtain any required easements or rights-of-way;
 - iv. solicitation of bids and awarding of contracts, and
 - v. construction period.
- C.11. Overall project budget breakdown. For each “cost classifications” line item that the applicant indicates will be included in the project budget on Form SF-424C, the applicant must provide a breakdown of the proposed project costs and tasks that is consistent with the detailed construction cost estimate for the project provided in the PER.

Preliminary Engineers Report

Add Attachment

Delete Attachment

View Attachment

D. Title Requirements

D.1. Does the applicant currently hold title to all project facilities, underlying land, necessary easements, and rights-of-way required for the project?

Yes (go to question D.2) No (explain below)

D.1.a. If No, does the applicant plan to obtain title?

D.1.a.i. Yes

How and when will the applicant obtain title? (After answering, go to question D.2)

D.1.a.ii. No

Please explain why not

D.1.b. If you indicated that the applicant does not currently have title and does not intend to obtain title, does the applicant hold a long-term lease or hold interest in project property for a period not less than the estimated useful life of the project?

D.1.b.i. Yes. Go to question D.2

D.1.b.ii. No. Please explain below how the applicant will satisfy EDA's title regulation at 13 C.F.R. § 314.7.

D.2. Will the applicant provide EDA a security interest and/or covenant of use in the real property or significant items of tangible personal property acquired or improved with EDA investment assistance? See 13 C.F.R. § 314.9.

Yes No (explain below)

D.3. Will real property or project facilities to be acquired or improved with EDA investment assistance, including any industrial or commercial park acreage, be mortgaged or used to collateralize any type of financing, including but not limited to bonds or tax credits, or is any real property to be used for the project currently mortgaged or being used as collateral?

Yes (explain below) No

D.4. Describe any required State permits, easements, rights-of-way or leases necessary to construct, operate, and maintain the project.

All of the improvements will be to City right-away property. We do not believe that any State permits will be required.

D.5. Describe any liens, mortgages, other encumbrances, reservations, reversionary interests or other restrictions on the applicant's interest in the property.

Not applicable.

D.6. Is the project located on a military or Department of Energy installation that is closed or scheduled for closure or realignment?

Yes No

D.7. Does the project involve construction within a railroad's right-of-way or over a railroad crossing?

Yes (explain below) No

D.8. Does the project include construction of a highway owned by a State or local government (other than the applicant)?

Yes (explain below) No

E. Sale or Lease

E.1. Does the applicant intend to sell, lease, transfer, dedicate or otherwise convey any interest in the project facilities, underlying land, or any land improved with EDA investment assistance?

Yes (explain below) No

E.2. Is the purpose of the project to construct facilities to serve an industrial or commercial park or sites owned by the applicant for sale or lease to private parties?

No Yes

Identify the owners of the acreage, provide an estimate of the number of acres benefiting from the proposed investment and explain how EDA's requirements will continue to be met after any sale or lease.

Note: Applicants may be asked to provide documentation that EDA's requirements will continue to be met after the sale or lease of project property.

E.3. Is the purpose of the project to construct facilities to serve a privately owned industrial or commercial park or sites for sale or lease?

No Yes

If Yes, identify the owners of the acreage, estimate the number of acres benefiting from the proposed investment, and explain below how EDA's requirements will continue to be met after the sale or lease. Note that certain EDA requirements attached to the property will survive any sale or transfer of the property. In addition, EDA may require evidence that the private party has title to the park or site prior to such sale or lease and condition the award of investment assistance upon assurances given by the private party that EDA determines are necessary to ensure consistency with the project purpose. See 13 C.F.R. § 314.3(c) and § 314.7.

E.4. For privately owned land improved by the proposed project, is the private owner willing to enter into an agreement to limit the sale price of the improved land to its fair market value before the improvements for a reasonable period of time?

Yes (explain below) No/Not applicable (no private owners)

E.5. Is the purpose of the project to construct, renovate or purchase a building?

Yes (explain below) No

E.5.a. Will the building be leased in whole or in part?

Yes (explain below) No

E.5.b. Is the purpose of the building to provide incubator space to new companies?

Yes (explain below) No

E.5.c. Will there be limitations on the length of the lease term?

Yes (explain below) No

E.5.d. Is the purpose of the project to provide building space to a single user or multiple users?

Yes No

E.5.e. Explain below the terms of any proposed lease.

F. State Historic Preservation Requirements

Have comments from the appropriate State Historic Preservation Officer (SHPO) already been received?

Yes (attach comments) No

Add Attachment

Delete Attachment

View Attachment

Note: If comments have not already been received, the applicant will be required to submit materials to SHPO. Regardless of whether the applicant believes historic or archaeological artifacts are present, the applicant will be required work with its SHPO. Specific requirements for states' SHPOs can generally be found on their websites. Applicants can also request additional information from EDA Regional Offices.

Please note that the SHPO clearance process can be lengthy. When submitting this material to the SHPO, the applicant must request that the SHPO submit comments on the proposed project to the EDA Regional Office processing the application.

G. National Environmental Policy Act (NEPA) Requirements

G.1. Please attach an environmental narrative and applicant certification clause using the template found on www.eda.gov.

NEPA Project Description.pd

Add Attachment

Delete Attachment

View Attachment

Federal agencies are required by law to assess the expected environmental impacts associated with proposed federal actions. Depending on its analysis of information submitted by the applicant, EDA may request additional information to better understand the current environmental conditions and the project elements that will affect the environment.

Comprehensive information is required to complete an environmental review in accordance with NEPA. Information must be provided for the:

- (i) site where the proposed project facilities will be constructed and the surrounding areas affected by its operation; and
- (ii) areas to be affected by any primary beneficiaries of the project.
- (iii) The information submitted must be sufficient to evaluate all reasonable alternatives to the proposed project and the direct and indirect environmental impacts of the project, as well as the cumulative impacts on the environment as defined in the regulations for implementing the procedural provisions of NEPA. See 40 C.F.R. parts 1500-1508.

The level of detail should be commensurate with the complexity and size of the project and the magnitude of the expected impact. Previously completed environmental impact documentation (assessments, impact statements, etc.) for activities in the region in which the proposed project will be located may be used as documentation.

H. Business Incubators and Accelerators

Does the applicant intend to construct or renovate a business incubator, accelerator, commercialization center, or similar project?

No

Yes

Please attach a feasibility study demonstrating the need for the Project and an operational plan based on industry best practices demonstrating the Eligible Applicant's plan for ongoing successful operations. See the applicable FFO for additional information and guidance.

Add Attachment

Delete Attachment

View Attachment



ED-900E – Calculation of Estimated Relocation and Land Acquisition Expenses

- a. Are relocation expenses part of the proposed project's EDA budget? Yes No
- b. Will the proposed project cause the displacement of individuals, families, businesses or farms? Yes No

If **Yes**, explain how relocation procedures will comply with the Uniform Relocation Assistance and Real Property Acquisition Policies Act of 1990 (13 C.F.R. § 302.5 ; see Certification #11 on Form SF-424D, 'Assurances - Construction Programs', for an explanation of this requirement.)

All applicants must complete the "Calculation of Estimated Relocation and Land Acquisition Expenses" form (below), and enter the estimated total for "costs incidental to land acquisition" (line item 1) on line item 3 ("relocation expenses and payments") of Form SF-424C, 'Budget Information - Construction Programs.' This is separate from the estimated purchase price of the property.

ITEM 1. COSTS INCIDENTAL TO LAND ACQUISITION - ESTIMATES	
Number of land transactions involved (including options, easements and rights-of-way):	
Recording fees, transfer taxes, surveys, appraisals, title search and similar expenses-Section 303(1)	
Penalty costs-Section 303(2)	
Real Property taxes-Section 303(3)	
Litigation expenses-Section 304(a)	
Total - Estimated costs incidental to transfer of title	
ITEM 2. RELOCATION - ESTIMATES	
a. TENANTS - Estimates: Number of Claims	
(1) Moving Expenses:	
Actual Expenses-Section 202(a)(1)	
In lieu payments-Section 202(b)	
Total - Moving Expenses	
(2) Replacement housing payments:	
Rental payments-Section 204(1)	
Down payment-Section 204(2)	
Total - Replacement housing payments	
Total - Estimated Tenants	

b. OWNER-OCCUPANTS - Estimates: Number of Claims	
(1) Moving Expenses:	
Actual Expenses-Section 202(a)(1)	
In lieu payments-Section 202(b)	
Total - Moving Expenses	
(2) Replacement housing payments:	
Purchase payments-Section 203(a)(1)	
Reasonable replacement costs-Section 203(a)(1)(A)	
Increased interest costs-Section 203(a)(1)(B)	
Closing costs-Section 203(a)(1)(C)	
Rental payments-Section 204(1)	
Down payment-Section 204(2)	
Total - Replacement housing payments	
Total - Estimated Owner-Occupants	
c. BUSINESS - Estimates: Number of Claims	
Moving Expenses:	
Actual Expenses-Section 202(a)(1)	
Actual loss of tangible personal property-Section 202(a)(2)	
Actual searching expenses-Section 202(a)(3)	
In lieu payments-Section 202(c)	
Total - Estimated Business	
d. NONPROFIT ORGANIZATIONS - Estimates: Number of Claims	
Moving Expenses:	
Actual Expenses-Section 202(a)(1)	
Actual loss of tangible personal property-Section 202(a)(2)	
Actual searching expenses-Section 202(a)(3)	
In lieu payments-Section 202(c)	
Total - Estimated Nonprofit Organizations	
e. FARM OPERATIONS - Estimates: Number of Claims	
Moving Expenses:	
Actual Expenses-Section 202(a)(1)	
Actual loss of tangible personal property-Section 202(a)(2)	
Actual searching expenses-Section 202(a)(3)	
In lieu payments-Section 202(c)	
Total - Estimated Farm Operations	
f. ADVISORY SERVICES - Estimates: Number of Claims	
Total - Expenses of grantee/borrower-Section 205	

g. ADMINISTRATION - Estimates: Number of Claims	
Contracting with individual, firm, association, or corporation-Section 212	
Agreement w/ Federal or State government agency or instrumentality-Section 212	
Total - Estimated Administration	
ITEM 3. GRAND TOTAL	
Enter the sum of Items 1 and 2 (parts (a) through (g)) in this Item	
GRAND TOTAL RELOCATION EXPENSES	

ASSURANCES - CONSTRUCTION PROGRAMS

OMB Number: 4040-0009
Expiration Date: 01/31/2019

Public reporting burden for this collection of information is estimated to average 15 minutes per response, including time for reviewing instructions, searching existing data sources, gathering and maintaining the data needed, and completing and reviewing the collection of information. Send comments regarding the burden estimate or any other aspect of this collection of information, including suggestions for reducing this burden, to the Office of Management and Budget, Paperwork Reduction Project (0348-0042), Washington, DC 20503.

PLEASE DO NOT RETURN YOUR COMPLETED FORM TO THE OFFICE OF MANAGEMENT AND BUDGET. SEND IT TO THE ADDRESS PROVIDED BY THE SPONSORING AGENCY.

NOTE: Certain of these assurances may not be applicable to your project or program. If you have questions, please contact the Awarding Agency. Further, certain Federal assistance awarding agencies may require applicants to certify to additional assurances. If such is the case, you will be notified.

As the duly authorized representative of the applicant:, I certify that the applicant:

1. Has the legal authority to apply for Federal assistance, and the institutional, managerial and financial capability (including funds sufficient to pay the non-Federal share of project costs) to ensure proper planning, management and completion of project described in this application.
2. Will give the awarding agency, the Comptroller General of the United States and, if appropriate, the State, the right to examine all records, books, papers, or documents related to the assistance; and will establish a proper accounting system in accordance with generally accepted accounting standards or agency directives.
3. Will not dispose of, modify the use of, or change the terms of the real property title or other interest in the site and facilities without permission and instructions from the awarding agency. Will record the Federal awarding agency directives and will include a covenant in the title of real property acquired in whole or in part with Federal assistance funds to assure non-discrimination during the useful life of the project.
4. Will comply with the requirements of the assistance awarding agency with regard to the drafting, review and approval of construction plans and specifications.
5. Will provide and maintain competent and adequate engineering supervision at the construction site to ensure that the complete work conforms with the approved plans and specifications and will furnish progressive reports and such other information as may be required by the assistance awarding agency or State.
6. Will initiate and complete the work within the applicable time frame after receipt of approval of the awarding agency.
7. Will establish safeguards to prohibit employees from using their positions for a purpose that constitutes or presents the appearance of personal or organizational conflict of interest, or personal gain.
8. Will comply with the Intergovernmental Personnel Act of 1970 (42 U.S.C. §§4728-4763) relating to prescribed standards of merit systems for programs funded under one of the 19 statutes or regulations specified in Appendix A of OPM's Standards for a Merit System of Personnel Administration (5 C.F.R. 900, Subpart F).
9. Will comply with the Lead-Based Paint Poisoning Prevention Act (42 U.S.C. §§4801 et seq.) which prohibits the use of lead-based paint in construction or rehabilitation of residence structures.
10. Will comply with all Federal statutes relating to non-discrimination. These include but are not limited to: (a) Title VI of the Civil Rights Act of 1964 (P.L. 88-352) which prohibits discrimination on the basis of race, color or national origin; (b) Title IX of the Education Amendments of 1972, as amended (20 U.S.C. §§1681 1683, and 1685-1686), which prohibits discrimination on the basis of sex; (c) Section 504 of the Rehabilitation Act of 1973, as amended (29 U.S.C. §794), which prohibits discrimination on the basis of handicaps; (d) the Age Discrimination Act of 1975, as amended (42 U.S.C. §§6101-6107), which prohibits discrimination on the basis of age; (e) the Drug Abuse Office and Treatment Act of 1972 (P.L. 92-255), as amended relating to nondiscrimination on the basis of drug abuse; (f) the Comprehensive Alcohol Abuse and Alcoholism Prevention, Treatment and Rehabilitation Act of 1970 (P.L. 91-616), as amended, relating to nondiscrimination on the basis of alcohol abuse or alcoholism; (g) §§523 and 527 of the Public Health Service Act of 1912 (42 U.S.C. §§290 dd-3 and 290 ee 3), as amended, relating to confidentiality of alcohol and drug abuse patient records; (h) Title VIII of the Civil Rights Act of 1968 (42 U.S.C. §§3601 et seq.), as amended, relating to nondiscrimination in the sale, rental or financing of housing; (i) any other nondiscrimination provisions in the specific statute(s) under which application for Federal assistance is being made; and (j) the requirements of any other nondiscrimination statute(s) which may apply to the application.

11. Will comply, or has already complied, with the requirements of Titles II and III of the Uniform Relocation Assistance and Real Property Acquisition Policies Act of 1970 (P.L. 91-646) which provide for fair and equitable treatment of persons displaced or whose property is acquired as a result of Federal and federally-assisted programs. These requirements apply to all interests in real property acquired for project purposes regardless of Federal participation in purchases.
12. Will comply with the provisions of the Hatch Act (5 U.S.C. §§1501-1508 and 7324-7328) which limit the political activities of employees whose principal employment activities are funded in whole or in part with Federal funds.
13. Will comply, as applicable, with the provisions of the Davis-Bacon Act (40 U.S.C. §§276a to 276a-7), the Copeland Act (40 U.S.C. §276c and 18 U.S.C. §874), and the Contract Work Hours and Safety Standards Act (40 U.S.C. §§327-333) regarding labor standards for federally-assisted construction subagreements.
14. Will comply with flood insurance purchase requirements of Section 102(a) of the Flood Disaster Protection Act of 1973 (P.L. 93-234) which requires recipients in a special flood hazard area to participate in the program and to purchase flood insurance if the total cost of insurable construction and acquisition is \$10,000 or more.
15. Will comply with environmental standards which may be prescribed pursuant to the following: (a) institution of environmental quality control measures under the National Environmental Policy Act of 1969 (P.L. 91-190) and Executive Order (EO) 11514; (b) notification of violating facilities pursuant to EO 11738; (c) protection of wetlands pursuant to EO 11990; (d) evaluation of flood hazards in floodplains in accordance with EO 11988; (e) assurance of project consistency with the approved State management program developed under the Coastal Zone Management Act of 1972 (16 U.S.C. §§1451 et seq.); (f) conformity of Federal actions to State (Clean Air) implementation Plans under Section 176(c) of the Clean Air Act of 1955, as amended (42 U.S.C. §§7401 et seq.); (g) protection of underground sources of drinking water under the Safe Drinking Water Act of 1974, as amended (P.L. 93-523); and, (h) protection of endangered species under the Endangered Species Act of 1973, as amended (P.L. 93-205).
16. Will comply with the Wild and Scenic Rivers Act of 1968 (16 U.S.C. §§1271 et seq.) related to protecting components or potential components of the national wild and scenic rivers system.
17. Will assist the awarding agency in assuring compliance with Section 106 of the National Historic Preservation Act of 1966, as amended (16 U.S.C. §470), EO 11593 (identification and protection of historic properties), and the Archaeological and Historic Preservation Act of 1974 (16 U.S.C. §§469a-1 et seq).
18. Will cause to be performed the required financial and compliance audits in accordance with the Single Audit Act Amendments of 1996 and OMB Circular No. A-133, "Audits of States, Local Governments, and Non-Profit Organizations."
19. Will comply with all applicable requirements of all other Federal laws, executive orders, regulations, and policies governing this program.
20. Will comply with the requirements of Section 106(g) of the Trafficking Victims Protection Act (TVPA) of 2000, as amended (22 U.S.C. 7104) which prohibits grant award recipients or a sub-recipient from (1) Engaging in severe forms of trafficking in persons during the period of time that the award is in effect (2) Procuring a commercial sex act during the period of time that the award is in effect or (3) Using forced labor in the performance of the award or subawards under the award.

SIGNATURE OF AUTHORIZED CERTIFYING OFFICIAL <input type="text" value="Completed on submission to Grants.gov"/>	TITLE <input type="text" value="Director, Office of Economic Development"/>
APPLICANT ORGANIZATION <input type="text" value="CITY of FRESNO - California"/>	DATE SUBMITTED <input type="text" value="Completed on submission to Grants.gov"/>

BUDGET INFORMATION - Construction Programs

NOTE: Certain Federal assistance programs require additional computations to arrive at the Federal share of project costs eligible for participation. If such is the case, you will be notified.

COST CLASSIFICATION	a. Total Cost	b. Costs Not Allowable for Participation	c. Total Allowable Costs (Columns a-b)
1. Administrative and legal expenses	\$ <input type="text"/>	\$ <input type="text"/>	\$ <input type="text"/>
2. Land, structures, rights-of-way, appraisals, etc.	\$ <input type="text" value="11,660.00"/>	\$ <input type="text"/>	\$ <input type="text" value="11,660.00"/>
3. Relocation expenses and payments	\$ <input type="text"/>	\$ <input type="text"/>	\$ <input type="text"/>
4. Architectural and engineering fees	\$ <input type="text" value="464,700.00"/>	\$ <input type="text"/>	\$ <input type="text" value="464,700.00"/>
5. Other architectural and engineering fees	\$ <input type="text" value="464,700.00"/>	\$ <input type="text"/>	\$ <input type="text" value="464,700.00"/>
6. Project inspection fees	\$ <input type="text"/>	\$ <input type="text"/>	\$ <input type="text"/>
7. Site work	\$ <input type="text"/>	\$ <input type="text"/>	\$ <input type="text"/>
8. Demolition and removal	\$ <input type="text"/>	\$ <input type="text"/>	\$ <input type="text"/>
9. Construction	\$ <input type="text" value="3,098,000.00"/>	\$ <input type="text"/>	\$ <input type="text" value="3,098,000.00"/>
10. Equipment	\$ <input type="text"/>	\$ <input type="text"/>	\$ <input type="text"/>
11. Miscellaneous	\$ <input type="text"/>	\$ <input type="text"/>	\$ <input type="text"/>
12. SUBTOTAL (sum of lines 1-11)	\$ <input type="text" value="4,039,060.00"/>	\$ <input type="text"/>	\$ <input type="text" value="4,039,060.00"/>
13. Contingencies	\$ <input type="text" value="309,800.00"/>	\$ <input type="text"/>	\$ <input type="text" value="309,800.00"/>
14. SUBTOTAL	\$ <input type="text" value="4,348,860.00"/>	\$ <input type="text"/>	\$ <input type="text" value="4,348,860.00"/>
15. Project (program) income	\$ <input type="text"/>	\$ <input type="text"/>	\$ <input type="text"/>
16. TOTAL PROJECT COSTS (subtract #15 from #14)	\$ <input type="text" value="4,348,860.00"/>	\$ <input type="text"/>	\$ <input type="text" value="4,348,860.00"/>
FEDERAL FUNDING			
17. Federal assistance requested, calculate as follows: (Consult Federal agency for Federal percentage share.) Enter the resulting Federal share.	Enter eligible costs from line 16c	Multiply X <input type="text" value="70"/> %	\$ <input type="text" value="3,044,202.00"/>

Applicants should also review the instructions for certification included in the regulations before completing this form. Signature on this form provides for compliance with certification requirements under 15 CFR Part 28, 'New Restrictions on Lobbying.' The certifications shall be treated as a material representation of fact upon which reliance will be placed when the Department of Commerce determines to award the covered transaction, grant, or cooperative agreement.

LOBBYING

As required by Section 1352, Title 31 of the U.S. Code, and implemented at 15 CFR Part 28, for persons entering into a grant, cooperative agreement or contract over \$100,000 or a loan or loan guarantee over \$150,000 as defined at 15 CFR Part 28, Sections 28.105 and 28.110, the applicant certifies that to the best of his or her knowledge and belief, that:

- (1) No Federal appropriated funds have been paid or will be paid, by or on behalf of the undersigned, to any person for influencing or attempting to influence an officer or employee of any agency, a Member of Congress in connection with the awarding of any Federal contract, the making of any Federal grant, the making of any Federal loan, the entering into of any cooperative agreement, and the extension, continuation, renewal, amendment, or modification of any Federal contract, grant, loan, or cooperative agreement.
- (2) If any funds other than Federal appropriated funds have been paid or will be paid to any person for influencing or attempting to influence an officer or employee of any agency, a Member of Congress, an officer or employee of Congress, or an employee of a member of Congress in connection with this Federal contract, grant, loan, or cooperative agreement, the undersigned shall complete and submit Standard Form-LLL, 'Disclosure Form to Report Lobbying,' in accordance with its instructions.
- (3) The undersigned shall require that the language of this certification be included in the award documents for all subawards at all tiers (including subcontracts, subgrants, and contracts under grants, loans, and cooperative agreements) and that all subrecipients shall certify and disclose accordingly.

This certification is a material representation of fact upon which reliance was placed when this transaction was made or entered into. Submission of this certification is a prerequisite for making or entering into this transaction imposed by section 1352, title 31, U.S. Code. Any person who fails to file the required certification shall be subject to a civil penalty of not less than \$10,000 and not more than \$100,000 for each such failure occurring on or before October 23, 1996, and of not less than \$11,000 and not more than \$110,000 for each such failure occurring after October 23, 1996.

As the duly authorized representative of the applicant, I hereby certify that the applicant will comply with the above applicable certification.

*** NAME OF APPLICANT**

CITY of FRESNO - California

*** AWARD NUMBER***** PROJECT NAME**

South Van Ness Industrial Project

Prefix:

Mr.

*** First Name:**

Larry

Middle Name:*** Last Name:**

Westerlund

Suffix:*** Title:** Director, Office of Economic Development*** SIGNATURE:**

Completed by Grants.gov upon submission.

*** DATE:**

Completed by Grants.gov upon submission.

ATTACHMENTS FORM

Instructions: On this form, you will attach the various files that make up your grant application. Please consult with the appropriate Agency Guidelines for more information about each needed file. Please remember that any files you attach must be in the document format and named as specified in the Guidelines.

Important: Please attach your files in the proper sequence. See the appropriate Agency Guidelines for details.

1) Please attach Attachment 1	<input type="text" value="B.8.a continuation.pdf"/>	<input type="button" value="Add Attachment"/>	<input type="button" value="Delete Attachment"/>	<input type="button" value="View Attachment"/>
2) Please attach Attachment 2	<input type="text" value="OK Produce Signed ED-900.pdf"/>	<input type="button" value="Add Attachment"/>	<input type="button" value="Delete Attachment"/>	<input type="button" value="View Attachment"/>
3) Please attach Attachment 3	<input type="text" value="Lyons Magnus Signed ED-900.pdf"/>	<input type="button" value="Add Attachment"/>	<input type="button" value="Delete Attachment"/>	<input type="button" value="View Attachment"/>
4) Please attach Attachment 4	<input type="text" value="Jain Signed ED-900.pdf"/>	<input type="button" value="Add Attachment"/>	<input type="button" value="Delete Attachment"/>	<input type="button" value="View Attachment"/>
5) Please attach Attachment 5	<input type="text" value="Support Letter Congressman Cd"/>	<input type="button" value="Add Attachment"/>	<input type="button" value="Delete Attachment"/>	<input type="button" value="View Attachment"/>
6) Please attach Attachment 6	<input type="text" value="Support Letter Councilmember"/>	<input type="button" value="Add Attachment"/>	<input type="button" value="Delete Attachment"/>	<input type="button" value="View Attachment"/>
7) Please attach Attachment 7	<input type="text" value="Support Letter AgPlus.pdf"/>	<input type="button" value="Add Attachment"/>	<input type="button" value="Delete Attachment"/>	<input type="button" value="View Attachment"/>
8) Please attach Attachment 8	<input type="text" value="Support Letter Fresno Chamber"/>	<input type="button" value="Add Attachment"/>	<input type="button" value="Delete Attachment"/>	<input type="button" value="View Attachment"/>
9) Please attach Attachment 9	<input type="text"/>	<input type="button" value="Add Attachment"/>	<input type="button" value="Delete Attachment"/>	<input type="button" value="View Attachment"/>
10) Please attach Attachment 10	<input type="text"/>	<input type="button" value="Add Attachment"/>	<input type="button" value="Delete Attachment"/>	<input type="button" value="View Attachment"/>
11) Please attach Attachment 11	<input type="text"/>	<input type="button" value="Add Attachment"/>	<input type="button" value="Delete Attachment"/>	<input type="button" value="View Attachment"/>
12) Please attach Attachment 12	<input type="text"/>	<input type="button" value="Add Attachment"/>	<input type="button" value="Delete Attachment"/>	<input type="button" value="View Attachment"/>
13) Please attach Attachment 13	<input type="text"/>	<input type="button" value="Add Attachment"/>	<input type="button" value="Delete Attachment"/>	<input type="button" value="View Attachment"/>
14) Please attach Attachment 14	<input type="text"/>	<input type="button" value="Add Attachment"/>	<input type="button" value="Delete Attachment"/>	<input type="button" value="View Attachment"/>
15) Please attach Attachment 15	<input type="text"/>	<input type="button" value="Add Attachment"/>	<input type="button" value="Delete Attachment"/>	<input type="button" value="View Attachment"/>



ED-900P – Proposal for EDA Assistance

Please answer all questions completely and accurately and provide a concise narrative statement for each of the questions below. Should you choose to submit the information in a separate document, the proposal narrative should be no more than five (5) pages in length. Please refer to the form instructions for additional information on each section. Applicants are encouraged to contact an EDA representative for assistance in preparing this proposal.

I. All Projects

I.A. General Information

Please identify all applicants for this project:

	Name	SAM.gov CAGE Code	SAM.gov Registration Expiration Date
Lead Applicant	CITY of FRESNO - California	47PF6	11/19/2016
Co-Applicant 1			

I.A.1. Description of applicant and co-applicants

Fresno is the fifth largest city in California, the largest inland city in California and the 34th largest city in the nation. Fresno is the center of the San Joaquin Valley and is the largest city in the Central Valley, which contains the San Joaquin Valley. It is approximately 200 miles north of Los Angeles and 170 miles south of the state capitol, Sacramento.

According to the American Community Survey, the City of Fresno had a population of 515,985 persons in 2014. This represents an increase of 3.9%, or 19,838 persons, from the 2010 population of 496,147 persons.

Of Fresno's estimated population: 28.3% are White alone, 7.1% are Black or African American alone, 0.3% are American Indian and Alaska Native alone, 12.9% are Asian alone, 0.1% are Native Hawaiian and Other Pacific Islander alone, 0.4% are some other race and 2.5% are two or more races. Fresno's Hispanic or Latino population is 48.4%.

I.A.2. Description of the region

The area known as Fresno County was discovered by Spaniards during a search for suitable mission sites. In 1846, this area became part of the United States as a result of the Mexican War. Fresno County was formed in 1856 from parts of Mariposa and Tulare Counties. The town of Fresno was incorporated in 1885, after a period of rapid growth resulting from the newly built Southern Pacific Railroad line and relocation of the County

seat to the town.

Agriculture is the backbone of the Fresno area, employing 20 percent of the workforce and providing more than \$3.5 billion of the local economy. A majority of America's produce is grown in California's Central Valley, and Fresno County is the number one agriculture producing county in the United States. By 2005, more than 7,500 farmers were growing 250 types of crops on one million acres of some of the world's most productive farmland. Major crops include grapes, cotton, cattle, tomatoes, milk, plums, turkeys, oranges, peaches and nectarines. A large food processing industry has developed around the agricultural activity and a number of canning, curing, drying and freezing plants are located in the area.

I.A.3. Description of complete EDA project

The project components include concrete curb and gutter replacement, street widening/pavement as needed, pavement resurfacing (including grind and overlay), storm drain infrastructure (upsizing existing flood control master and ancillary facilities per flood control's master plan), traffic access and circulation and data/fiber placement and safety enhancement.

I.A.4. Need for the project

The badly degraded and deteriorating conditions of infrastructure in the South Van Ness Industrial Area is a major obstacle to expansion by existing businesses and the attraction of new businesses. Project beneficiaries have made the City aware that the narrow pot-holed streets, flooding during storm events and the inability of semi-trucks, trailers and employees to egress and ingress hinder any new development. Severe bottle-necks occur as vehicles attempt to navigate through these streets, causing delays in the receipt and transport of goods and services.

I.A.5. Basis of economic distress cited for eligibility

The rate of unemployment in the City of Fresno, as compared to the U.S. rate of unemployment is extremely high. At 10.6%, unemployment within the City of Fresno was 112% higher than the national average of 5% in March 2016 and, at 11.7% it was 112.7% higher than the national average of 5.5% in March 2015.

I.A.6. Description of documentable impact

At least 327 full-time jobs from three substantive expansions are expected throughout the grant and beyond.

I.A.7. Funding and cost share matrix

The City of Fresno would meet its match of cost sharing for the project with a combination of contributed dedicated staff time, public right-of-way infrastructure and development fees, in addition to general and enterprise funds set aside in the current fiscal year.

I.A.8. Description of any known environmental concerns or public controversy

No sensitive environmental areas, contaminated sites, archeological sites, sites listed on the National Register of Historic Places or wetlands are in

any way involved in public infrastructure improvements of this project.

I.A.9. Have you reviewed and considered the federal regulations that govern EDA awards, including EDA's regulations at 13 C.F.R. Chapter III and the Uniform Administrative Requirements, Cost Principles, and Audit Requirements for Federal Awards at 2 C.F.R. Part 200?

Yes No

II. Construction Projects and Design and Engineering Only Projects

II.A. Property Requirements

II.A.1. Briefly describe plans for the ownership, operation, maintenance and management of project facilities, including any land, improved land, structures, appurtenances thereto, other improvements or personal property.

Improvements will be repaired to existing rights of way and corridors. Ongoing maintenance and operations will remain with the City of Fresno, the current entity responsible for maintenance.

II.A.2. Will real property or project facilities to be acquired or improved with the EDA investment assistance be owned, operated, managed or maintained by an entity other than the proponent?

Yes (explain below) No

II.A.3. Is or was any real property connected to the proposed project subject to eminent domain proceedings?

Yes (explain below) No

II.B. Environmental Requirements

II.B.1. Briefly describe the project site's physical attributes, including a description of any known sensitive environmental areas.

No sensitive environmental areas, contaminated sites, archeological sites, sites listed on the National Register of Historic Places or wetlands are in any way involved in public infrastructure improvements of this project.

II.B.2. Attach maps of the project site (such as Google maps or other readily available maps) with project components and beneficiaries clearly indicated.

Maps.pdf

Add Attachment

Delete Attachment

View Attachment

II.B.3. Has an Environmental Impact Statement, Environmental Assessment, or other similar analysis been completed for this proposed project or for other activities in the region?

Yes (provide the date/name of organization that completed the analysis) No

Date

05/03/2016

Organization Name

City of Fresno, California

Instructions for Form ED-900P

I. All Projects

I.A. General Information

I.A.1. Description of applicant and co-applicants

Identify and describe entities responsible for the proposed project, including, for construction projects, any entity that will own, operate, maintain or manage project facilities, including any land, improved land, structures, and appurtenances thereto.

I.A.2. Description of the region

Describe the region where the project will be located, including the specific geographic location of the project within the region. Briefly describe the economic conditions of the region where the project will be located—for example, the economic adjustment problems or severity of the economic dislocations the region has experienced or is about to experience.

I.A.3. Description of complete EDA project

Describe the complete scope of work and the components of the proposed investment. The description of the proposed project should include a clear statement of the overall purpose of the project as well as information about new development resulting from the EDA project or proposed by any identified beneficiary.

I.A.4. Need for the project

Briefly describe the economic development needs that will be met by the proposed investment, including how the proposed investment will address the economic distress identified in question I.A.5. Applicants must clearly detail how the proposed project will support the economic development needs and objectives outlined in the Comprehensive Economic Development Strategy (CEDS) or alternate EDA-approved strategic planning document capable of meeting EDA's CEDS or strategy requirements. The applicants should also highlight any instances where the proposed project will integrate or further leverage other federal support. This could include complementing projects funded through other grant programs (i.e. TIGER, CDBG). If EDA does not already have the applicable plan, the applicant may be required to provide it. Additional information and a summary of EDA's CEDS and strategy requirements may be obtained through your EDA representative.

I.A.5. Basis of economic distress cited for eligibility

Identify the region that will be used as a basis for eligibility and under which distress criterion or criteria the project qualifies:

- a. **Unemployment rate:** The project is located in a region that has an unemployment rate that is, for the most recent 24-month period for which data are available, at least one percentage point above the national unemployment rate.
- b. **Per capita income:** The project is located in a region that has a per capita income that is, for the most recent period for which data are available, 80 percent or less of the national average per capita income.
- c. **Special need:** The project is located in a region that has experienced or is about to experience a "Special Need" (as defined in 13 C.F.R. § 300.3) arising from actual or threatened severe unemployment or economic adjustment problems resulting from severe short-term or long-term changes in economic conditions. See applicable FFO for Special Need Criteria.

I.A.6. Description of documentable impact

Clearly describe the long-term potential economic impact of the proposed project including jobs created or saved and private investment to be leveraged by the proposed project.

I.A.7. Funding and cost share matrix

Identify the source, nature and amount of all non-EDA funds/financing for the proposed project. Identify any entity providing cost share regardless of status as an applicant or co-applicant. Explain the status of funding commitments including when the funds will be available and describe any conditions or restrictions on the use of such funds.

I.A.8. Description of any known environmental concerns or public controversy

Please identify or disclose information relative to any known public controversy in relation to the proposed project, project location or identified beneficiaries. If applicable, please also describe any known environmental concerns in relation to the project location and the location of any identified beneficiary.

I.A.9. Have you reviewed and considered the federal regulations that govern EDA awards, including EDA's regulations at 13 C.F.R. Chapter III and the Uniform Administrative Requirements, Cost Principles, and Audit Requirements for Federal Awards at 2 C.F.R. Part 200?

Please respond Yes or No. A link to EDA's regulations may be found on EDA's website at www.eda.gov; the Code of Federal Regulations may be found at www.ecfr.gov.

II. Construction Projects and Design and Engineering Only Projects

II.A. Property Requirements

II.A.1. Briefly describe plans for the ownership, operation, maintenance and management of project facilities, including any land, improved land, structures, appurtenances thereto, other improvements or personal property.

Describe who will own, operate, maintain and manage the project facilities, including any land, improved land, structures, appurtenances thereto, other improvements or personal property related to the project.

II.A.2. Will real property or project facilities to be acquired or improved with the EDA investment assistance be owned, operated, managed or maintained by an entity other than the proponent?

Please respond Yes or No. If Yes, please identify who will own, operate, or maintain the project facilities and that entity's relationship, if any, to the proponent. See 13 C.F.R. § 314.7.

II.A.3. Is or was any real property connected to the proposed project subject to eminent domain proceedings?

Please respond Yes or No. If Yes, please briefly describe the eminent domain proceedings, including date of acquisition and identified rationale for the action.

II.B. Environmental Requirements

II.B.1. Briefly describe the project site's physical attributes, including a description of any known sensitive environmental areas.

Please provide a description of any known sensitive environmental areas, including contaminated or potentially contaminated sites, archaeological sites, cultural resources, historical properties or sites listed on the National Register of Historic Places, and wetlands that may be impacted by the project or that are adjacent to the project site.

II.B.2. Attach maps of the project site (such as Google maps or other readily available maps) with project components and beneficiaries clearly indicated.

Attach maps that are already available and do not require additional expense to obtain or produce. Please note that you will be required to submit U.S. Geological Survey (USGS) maps and Federal Emergency Management Agency (FEMA) floodplain maps as part of the complete application if your project is considered in Phase II; however these types of maps are not required at the proposal stage.

II.B.3. Has an Environmental Impact Statement, Environmental Assessment, or other similar analysis been completed for this proposed project or for other activities in the region?

Please respond Yes or No. If Yes, please indicate the date on which the statement or analysis was completed and by whom. Please note that this question is simply asking that you identify whether any such statement or analysis has already been completed and when; an environmental impact statement for your project is not required at this time.