

CITY OF



# PUBLIC WORKS DEPARTMENT

TRAFFIC AND ENGINEERING SERVICES DIVISION

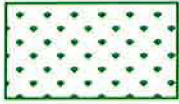
FEATURES TO BE ADDED BY ANNEXATION NO. 54

COMMUNITY FACILITIES DISTRICT NO. 11

TRACT 6073 "NO PHASES"



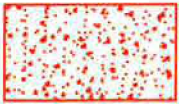
NOT TO SCALE  
April 29, 2014



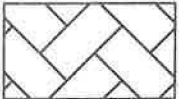
**LANDSCAPE AND IRRIGATION:**  
TREES AND SHRUBS:  
BUFFERS/PARKWAYS/OUTLOT B = 13,860 SF  
WINERY ENTRANCE MEDIAN = 630 SF  
TURF AND BEDS:  
OUTLOT A & B = 35,252 SF

LARGE TREES = 51 EA

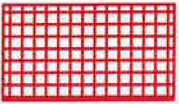
SMALL TREES = 3 EA



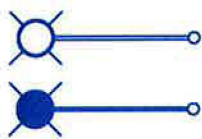
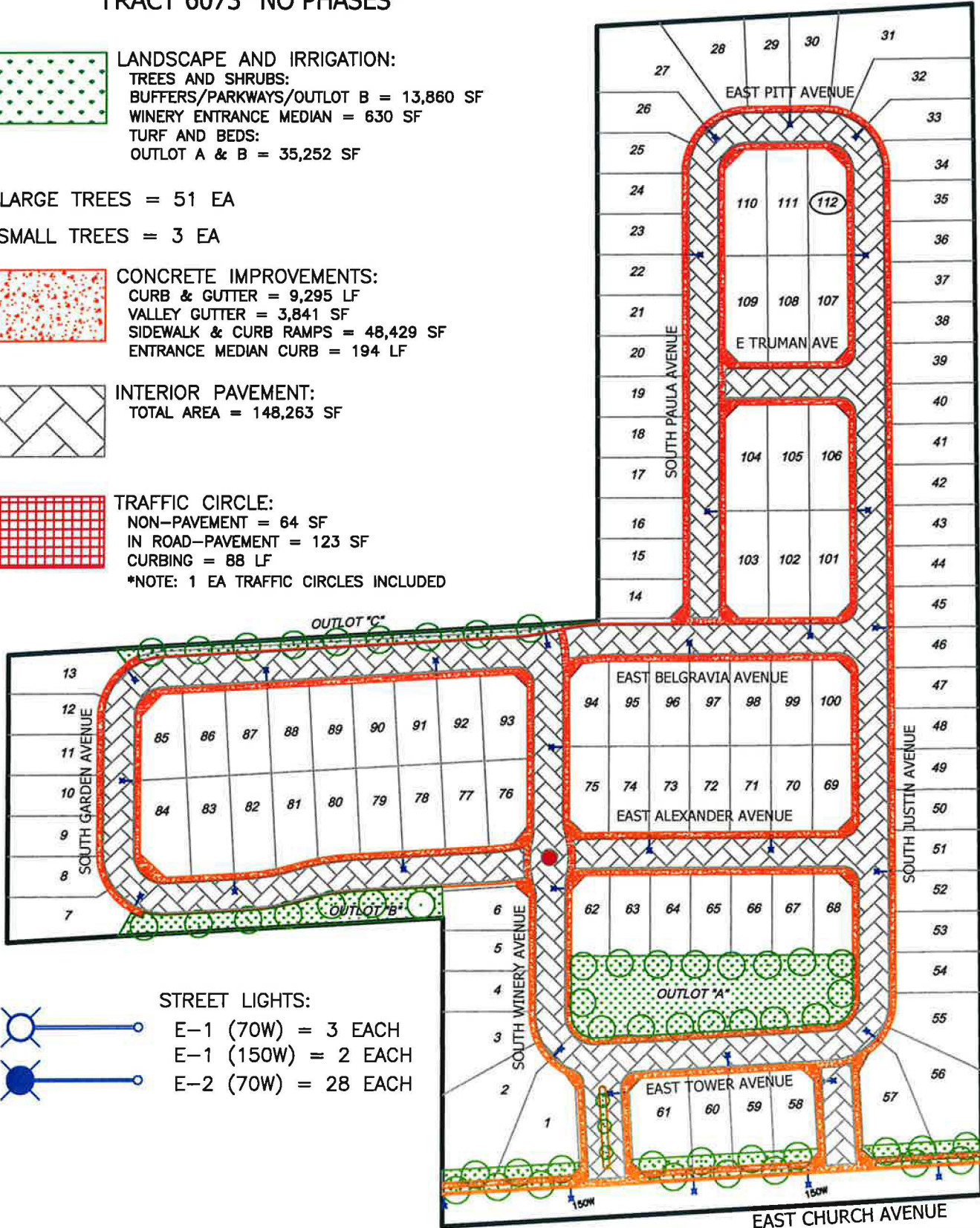
**CONCRETE IMPROVEMENTS:**  
CURB & GUTTER = 9,295 LF  
VALLEY GUTTER = 3,841 SF  
SIDEWALK & CURB RAMPS = 48,429 SF  
ENTRANCE MEDIAN CURB = 194 LF



**INTERIOR PAVEMENT:**  
TOTAL AREA = 148,263 SF



**TRAFFIC CIRCLE:**  
NON-PAVEMENT = 64 SF  
IN ROAD-PAVEMENT = 123 SF  
CURBING = 88 LF  
\*NOTE: 1 EA TRAFFIC CIRCLES INCLUDED



**STREET LIGHTS:**  
E-1 (70W) = 3 EACH  
E-1 (150W) = 2 EACH  
E-2 (70W) = 28 EACH