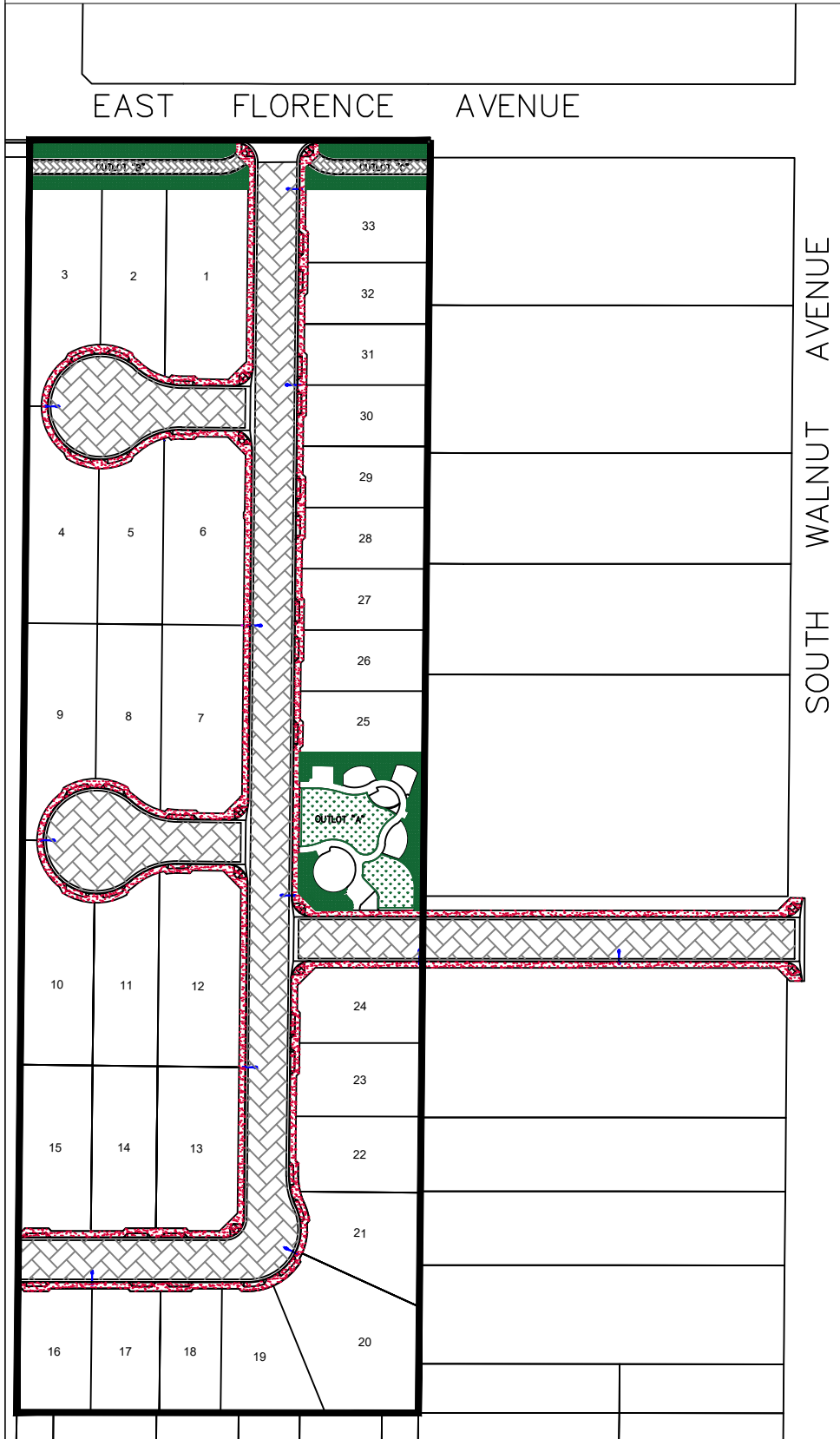



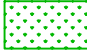


NOT TO SCALE
April 22, 2024


PUBLIC WORKS DEPARTMENT
LAND PLANNING & SUBDIVISION INSPECTION SECTION
FEATURES TO BE ADDED BY ANNEXATION NO. 149
COMMUNITY FACILITIES DISTRICT NO. 11




LANDSCAPE AND IRRIGATION:

-  BUFFERS/PARKWAYS/MEDIAN
TREES & SHRUBS = 9,473 SF
-  TURF & BEDS
GROUND COVER = 4,221 SF
- SMALL TREES = 15 EACH
LARGE TREES = 16 EACH

CONCRETE IMPROVEMENTS:

-  CURB & GUTTER = 3,839 LF
VALLEY GUTTER = 2,008 SF
SIDEWALK & CURB RAMPS = 21,312 SF

LOCAL STREET PAVEMENT:

-  INTERIOR RESIDENTIAL = 64,399 SF
ALLEY/TRAIL = 2,971 SF

OUTLOT HARDSCAPE AND AMENITIES:

- *CONCRETE WALKS & PADS = 7,807 SF
- *TABLES = 4 EACH
- *BENCHES = 3 EACH
- *TRASH RECEPTACLES = 3 EACH
- *SAFETY SURFACE = 1,458 SF
- *PLAY STRUCTURE = 1 EACH
- *SHADE STRUCTURE = 1 SET
- *EXERCISE EQUIPMENT = 1 SET
- *BLOCK WALL = 120 LF
- *DECOMPOSED GRANITE PATHWAYS = 180 CF
- *PARK LIGHTS = 2 EACH

STREET LIGHTS:
TOTAL = 11 EACH

