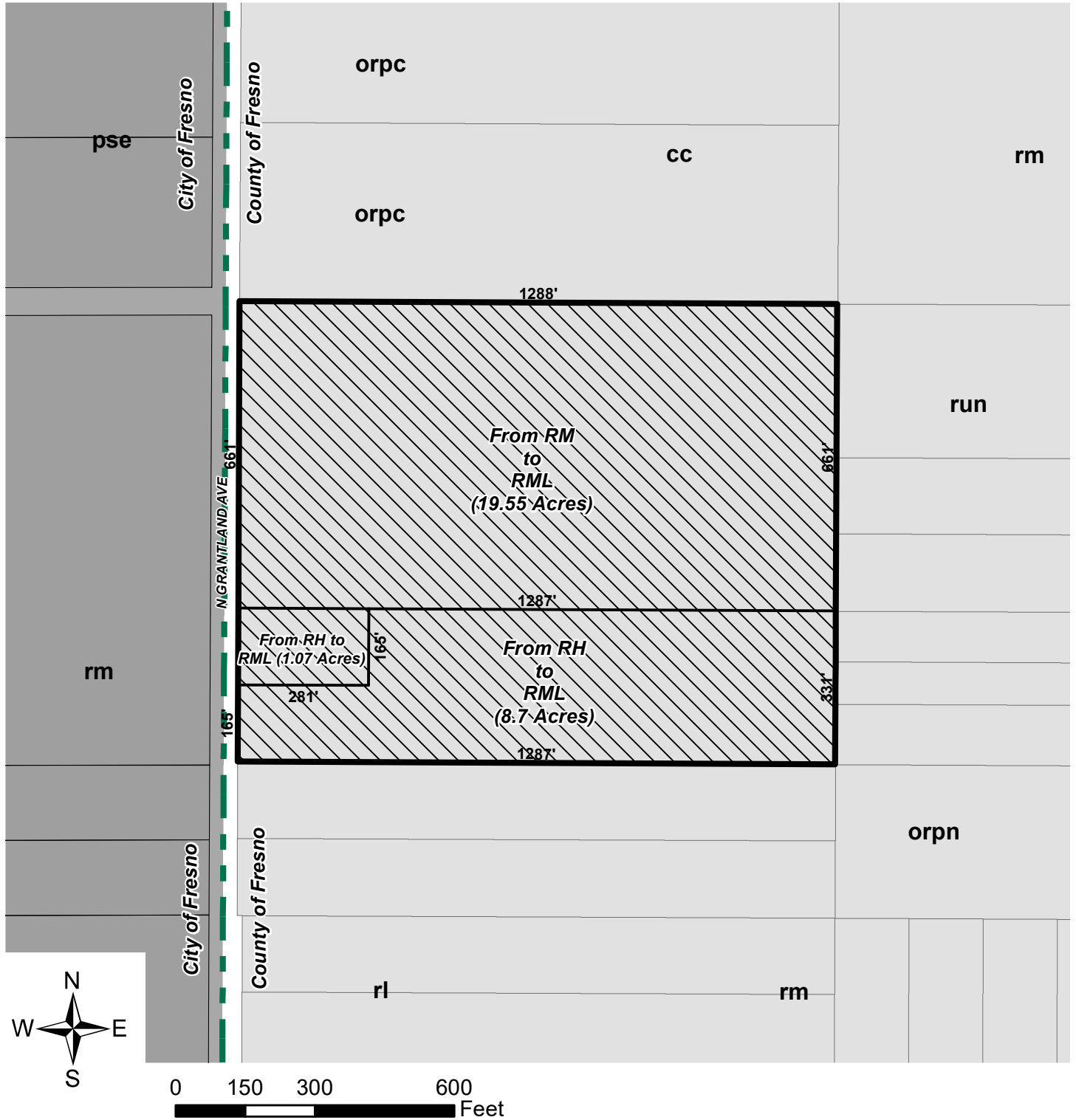


# EXHIBIT F – Proposed Planned Land Use Map



**P18-01089**

**APN: 512-141-33, 512-141-46, and 512-141-47**

**3326 Grantland Avenue**

 City Limits



Proposes to amend the Fresno General Plan from Residential, Medium Density to Residential, Medium Low Density (19.55 Acres); and Residential, High Density to Residential, Medium Low Density (9.77 Acres).