

EXHIBIT B N



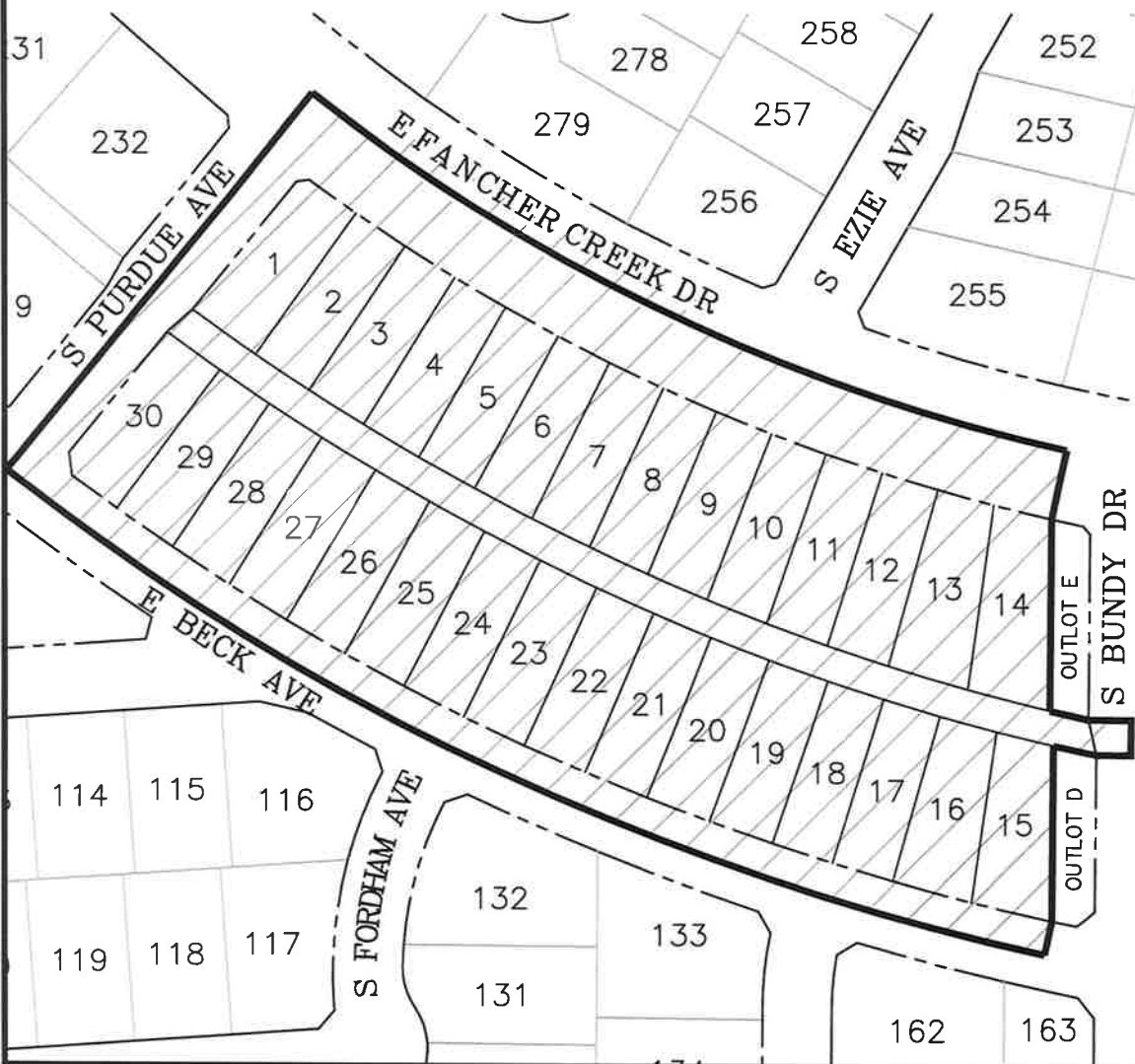
TERRITORY TO BE ANNEXED TO THE CITY CFD NO. 11



BOUNDARY LINE OF NEW TERRITORY



NOT TO SCALE



DOC. _____

FILED IN THE OFFICE OF THE CITY CLERK OF THE CITY OF FRESNO THIS ___ DAY OF _____, 2015.

ATTEST:

YVONNE SPENCE, CMC
CITY CLERK OF THE CITY OF FRESNO



BY: _____
DEPUTY

I HEREBY CERTIFY THAT THE ANNEXATION MAP NO. 62 OF THE COMMUNITY FACILITIES DISTRICT NO. 11, CITY OF FRESNO, COUNTY OF FRESNO, STATE OF CALIFORNIA WAS ADOPTED BY THE COUNCIL OF THE CITY OF FRESNO BY RESOLUTION NO. 2015-___ ON _____, 2015.

ATTEST:

YVONNE SPENCE, CMC
CITY CLERK OF THE CITY OF FRESNO



BY: _____
DEPUTY

THIS ANNEXATION MAP NO. 62 OF THE CITY OF FRESNO COMMUNITY FACILITIES DISTRICT NO. 11, WAS FILED THIS ___ DAY OF _____, 2015 AT THE HOUR OF ___ O'CLOCK ___ M AT BOOK 44, PAGE ___ OF MAPS OF ASSESSMENT AND COMMUNITY FACILITIES DISTRICTS IN THE OFFICE OF THE COUNTY RECORDER IN THE COUNTY OF FRESNO, STATE OF CALIFORNIA.

PAUL DICTOS, C.P.A.
COUNTY RECORDER OF THE COUNTY OF FRESNO

BY: _____

REFERENCE: BOUNDARY MAP OF CITY OF FRESNO COMMUNITY FACILITIES DISTRICT NO. 11, RECORDED NOVEMBER 8, 2005 AT BOOK 41, PAGE 61 OF ASSESSMENT AND COMMUNITY FACILITIES DISTRICTS IN THE OFFICE OF THE RECORDER IN THE COUNTY OF FRESNO, STATE OF CALIFORNIA

NOTE: FOR PARCEL DIMENSIONS, SEE ASSESSOR'S MAP BOOK PAGES

CITY OF FRESNO - Public Works Department	
ANNEXATION MAP NO. 62 OF COMMUNITY FACILITIES DISTRICT NO. 11 OF THE CITY OF FRESNO, FRESNO COUNTY, CALIFORNIA	
CONST. ENGR.	OFFICE ENGR.
CITY ENGR.	
DR. BY: AJL	SHEET NO. 1
CHK. BY:	OF 1 SHEETS
DATE: July 18, 2015	
SCALE:	1"=1349'