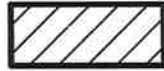


EXHIBIT B



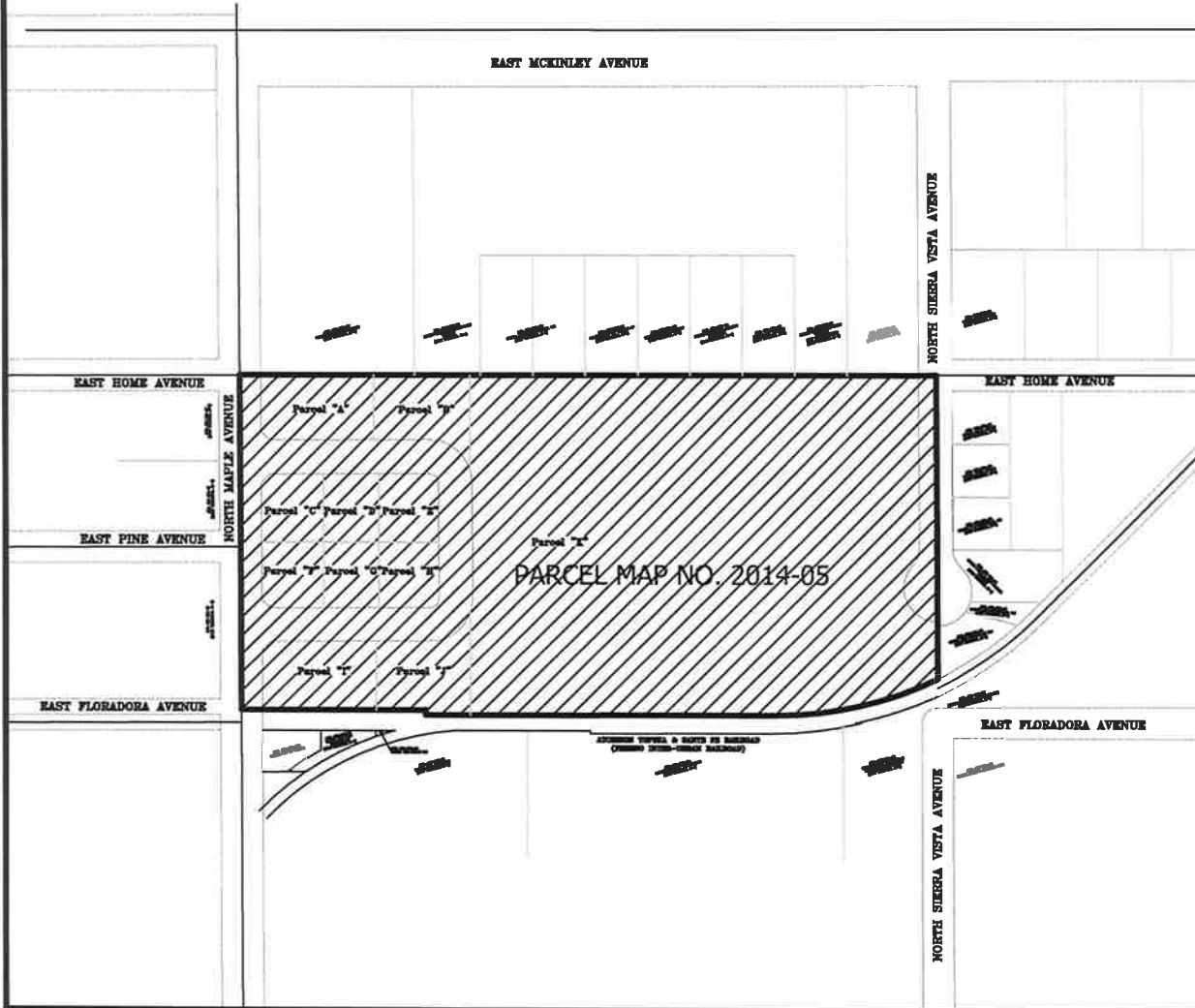
TERRITORY TO BE ANNEXED TO THE CITY CFD NO. 9



BOUNDARY LINE OF NEW TERRITORY



NOT TO SCALE



DOC. _____

FILED IN THE OFFICE OF THE CITY CLERK OF THE CITY OF FRESNO THIS _____ DAY OF _____, 2015.

ATTEST:

YVONNE SPENCE, CMC
CITY CLERK OF THE CITY OF FRESNO



BY: _____
DEPUTY

I HEREBY CERTIFY THAT THE ANNEXATION MAP NO. 7 OF THE COMMUNITY FACILITIES DISTRICT NO. 9, CITY OF FRESNO, COUNTY OF FRESNO, STATE OF CALIFORNIA WAS ADOPTED BY THE COUNCIL OF THE CITY OF FRESNO BY RESOLUTION NO. 2013-___ ON _____, 2015.

ATTEST:

YVONNE SPENCE, CMC
CITY CLERK OF THE CITY OF FRESNO



BY: _____
DEPUTY

THIS ANNEXATION MAP NO. 7 OF THE CITY OF FRESNO COMMUNITY FACILITIES DISTRICT NO. 9, WAS FILED THIS _____ DAY OF _____, 2015 AT THE HOUR OF _____ O'CLOCK _____ M AT BOOK 44, PAGE _____ OF MAPS OF ASSESSMENT AND COMMUNITY FACILITIES DISTRICTS IN THE OFFICE OF THE COUNTY RECORDER IN THE COUNTY OF FRESNO, STATE OF CALIFORNIA

PAUL DICTOS, C.P.A.
COUNTY RECORDER OF THE COUNTY OF FRESNO

BY: _____

REFERENCE: BOUNDARY MAP OF CITY OF FRESNO COMMUNITY FACILITIES DISTRICT NO. 9, RECORDED DECEMBER 4, 2008 AT BOOK 42, PAGE 100 OF ASSESSMENT AND COMMUNITY FACILITIES DISTRICTS IN THE OFFICE OF THE RECORDER IN THE COUNTY OF FRESNO, STATE OF CALIFORNIA

NOTE: FOR PARCEL DIMENSIONS, SEE ASSESSOR'S MAP BOOK PAGES

<p>CITY OF FRESNO - Public Works Department</p>	
<p>ANNEXATION MAP NO. 7 OF COMMUNITY FACILITIES DISTRICT NO. 9 OF THE CITY OF FRESNO, FRESNO COUNTY, CALIFORNIA</p>	
<p>DATE: JANUARY 28, 2015</p>	<p>SHEET NO. 1 OF 1 SHEETS</p>
<p>SCALE: 1"=1,133'</p>	<p>1-P:1339</p>