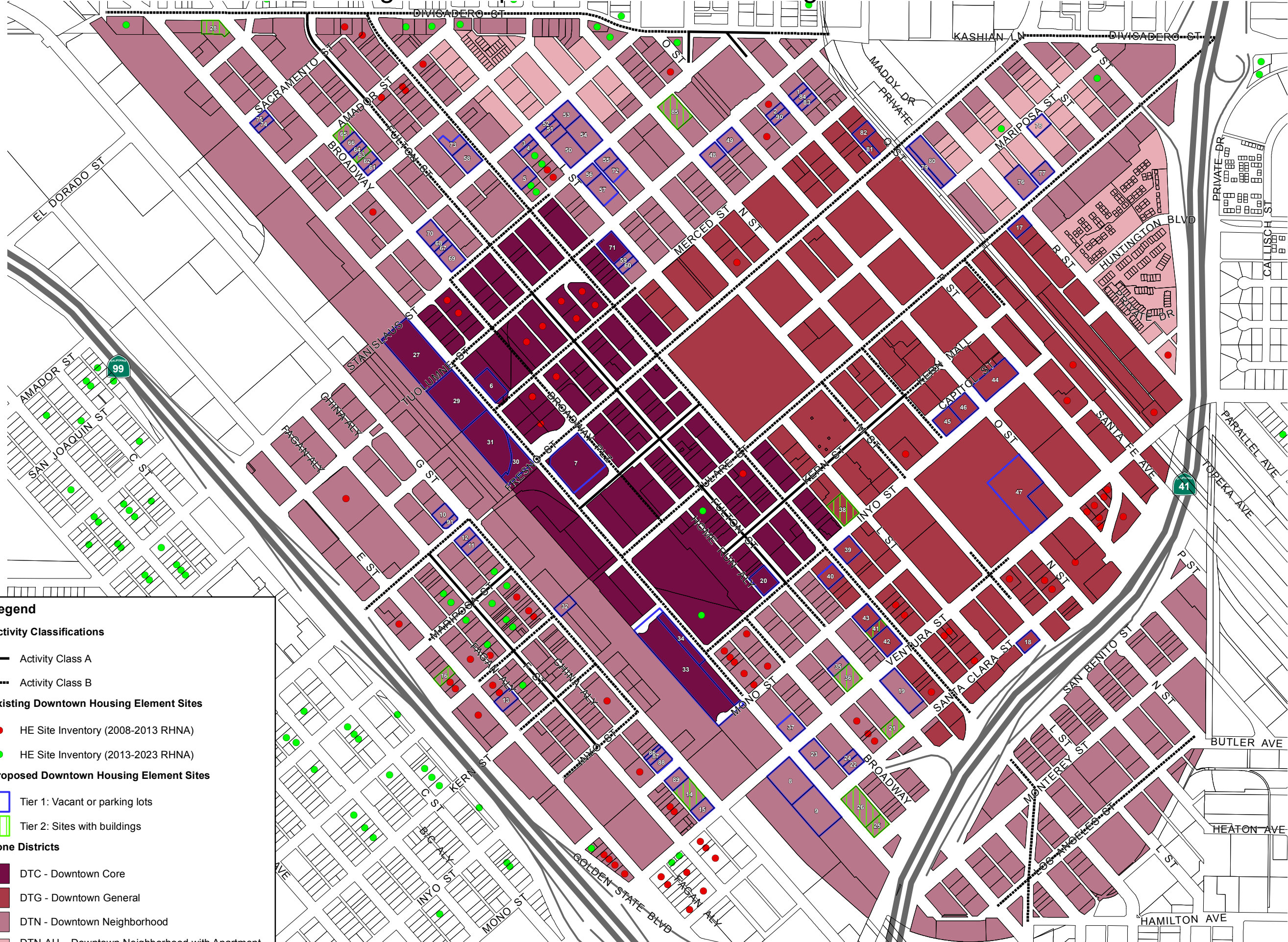


# Existing and Proposed Downtown Housing Element Sites



**Legend**

**Activity Classifications**

- Activity Class A
- Activity Class B

**Existing Downtown Housing Element Sites**

- HE Site Inventory (2008-2013 RHNA)
- HE Site Inventory (2013-2023 RHNA)

**Proposed Downtown Housing Element Sites**

- Tier 1: Vacant or parking lots
- Tier 2: Sites with buildings

**Zone Districts**

- DTC - Downtown Core
- DTG - Downtown General
- DTN - Downtown Neighborhood
- DTN-AH - Downtown Neighborhood with Apartment House Overlay

Number	Tier	APN	ZN BASE	ACRES	Total Potential Units
1	1	46605514	DTN	0.17	18
2	1	46608103	DTN	0.17	18
3	1	46614201	DTN	0.17	19
4	1	46614202	DTN	0.17	19
5	1	46614209	DTN	0.34	37
6	1	46620654	DTC	0.69	186
7	1	46621522T	DTC	2.34	631
8	1	46705013ST	DTN	1.47	158
9	1	46705017S	DTN	1.62	175
10	1	46706124T	DTN	0.34	36
11	1	46706203T	DTN	0.26	28
12	1	46706211T	DTN	0.26	28
13	1	46707410T	DTN	0.35	37
14	2	46708118	DTN	0.69	75
15	1	46708119T	DTN	0.34	37
16	2	46710304	DTN	0.26	28
17	1	46816101	DTG	0.34	62
18	1	46822624	DTG	0.34	62
19	1	46826519	DTN	1.10	119
20	1	46828223T	DTC	0.60	161
21	2	46829204	DTN	0.34	36
22	1	46829503	DTN	0.26	28
23	1	46829506	DTN	0.62	67
24	1	46829507	DTN	0.17	19
25	2	46829609	DTN	0.34	37
26	2	46829610	DTN	0.97	105
27	1	46504038ST	DTC	2.98	805
28	2	46618315	DTN	0.42	45
29	1	46504037ST	DTC	2.31	623
30	1	46703040ST	DTC	0.80	215
31	1	46703039ST	DTC	2.25	606
32	1	46704030ST	DTN	0.28	30
33	1	46704020S	DTC	4.39	1185
34	1	46704022S	DTC	0.65	176
35	1	46829115	DTN	0.26	28
36	2	46829116	DTN	0.52	56
37	1	46829406	DTN	0.51	56
38	2	46825204	DTG	0.69	124
39	1	46825316	DTG	0.52	93
40	1	46825601	DTG	0.43	77
41	2	46826404	DTG	0.26	47
42	1	46826413S	DTG	0.60	109
43	1	46826414	DTG	0.52	93
44	1	46818230	DTG	1.15	207
45	1	46818518	DTG	0.58	104
46	1	46818520	DTG	0.58	105
47	1	46840054T	DTG	2.87	516
48	1	46608313T	DTN	0.43	46
49	1	46608319T	DTN	0.43	46
50	1	46610520	DTN	0.82	89
51	1	46610522	DTN	0.18	20
52	1	46610523	DTN	0.18	20
53	1	46610524	DTN	0.55	60
54	1	46610525	DTN	0.92	99
55	1	46611401	DTN	0.35	37
56	1	46611411	DTN	0.34	37
57	1	46611414	DTN	0.68	73
58	1	46614403	DTN	0.60	65
59	1	46615103	DTN	0.17	19
60	1	46615104	DTN	0.17	19
61	1	46619204	DTN	0.16	17
62	1	46619205	DTN	0.24	26
63	2	46619206	DTN	0.16	17
64	1	46619207	DTN	0.16	17
65	2	46619210	DTN	0.27	29
66	1	46619211	DTN	0.29	31
67	1	46620107	DTN	0.16	17
68	1	46620108	DTN	0.16	17
69	1	46620112	DTN	0.48	52
70	1	46620114	DTN	0.48	52
71	1	46615114	DTC	0.69	186
72	1	46614146	DTN	0.37	40
73	1	46614408	DTN	0.38	41
74	1	46619409	DTN	0.17	19
75	1	46619410	DTN	0.17	19
76	1	46604123	DTN	0.75	81
77	1	46604125	DTN	0.36	39
78	1	46604201	DTN-AH	0.36	19
79	1	46606610U	DTN	0.28	30
80	1	46606611S	DTN	1.10	119
81	1	46605607	DTG	0.21	37
82	1	46605619	DTG	0.35	62
83	1	46605512	DTN	0.17	18
84	1	46605513	DTN	0.17	18
85	2	46607529	DTN	0.78	84
86	1	46707305T	DTN	0.09	9
87	1	46707306T	DTN	0.18	19
88	1	46707307T	DTN	0.28	30
89	1	46708116T	DTN	0.35	38
90	1	46608104	DTN	0.17	18
91	1	46706123T	DTN	0.12	13
				<b>54.16</b>	<b>9374</b>

Total Potential Units Calculation:  
# of floors allowed by the zoning x 18' x lot acres

\*Based on the past decade of Downtown housing construction, which has averaged 18 units per acre per floor

Floors Allowed Per Zoning District:  
DTN-AH: 3 floors  
DTN: 6 floors  
DTG: 10 floors