

FINAL MAP OF

TRACT NO. 6163

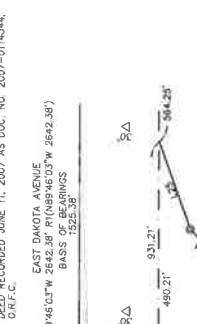
PHASE 2 OF VESTING TENTATIVE MAP NO. 5571
 BEING A MERGER OF AND RESUBDIVISION OF OUTLOT A OF TRACT 5571, A PORTION OF
 PARCEL B & THE UNSUBDIVIDED REMAINDER OF PARCEL A OF PARCEL MAP 2004-29
 IN THE SOUTHEAST 1/4 OF SECTION 22, T.13S, R.21E, M.D.B.&M.
 IN THE CITY OF FRESNO, COUNTY OF FRESNO, STATE OF CALIFORNIA
 SURVEYED AND PLATTED IN JUNE 2016 BY YAMABE & HORN ENGINEERING, INC.
 CONSISTING OF FIVE SHEETS, SHEET 2 OF 5

BOUNDARY ANALYSIS

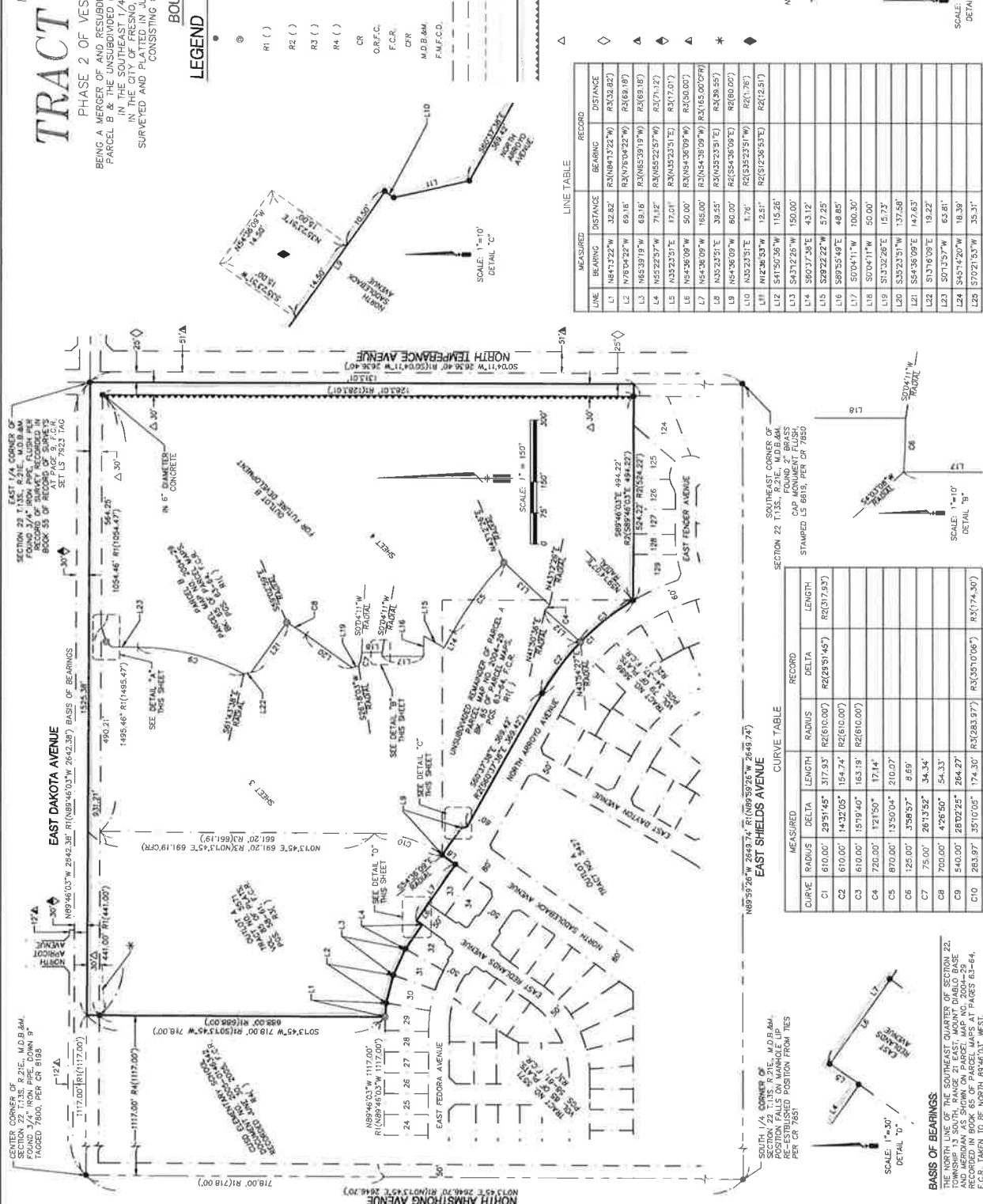
LEGEND

- UNWARRANTED FOUND & ACCEPTED 3/4" IRON PIPE DOWN 5" TAGGED LS 6819 UNLESS OTHERWISE NOTED
- SET 3/4" X 1/4" IRON PIPE UP 1" IN 1" DIAMETER X 30' F.C.C. MONUMENT, DOWN 6" TAGGED LS 7023
- RI () APPROXIMATE CORNER POSITION AS SHOWN ON PAGES 28-29 RECORDED IN BOOK 85 OF PARCEL MAPS AT PAGES 61-64 F.C.C.
- R2 () RECORD DATA PER TRACT NO. 5858 RECORDED IN VOLUME 79 OF PLATS, PAGES 364-37 F.C.C.
- R3 () RECORD DATA PER TRACT NO. 5571 RECORDED IN VOLUME 85 OF PLATS, PAGES 58-61, F.C.C.
- R4 () RECORD DATA PER DOCUMENT NO. 2005-0145342 RECORDED JUNE 30, 2005, F.C.C.
- CR CORNER RECORD ON FILE WITH THE FRESNO COUNTY SURVEYOR
- O.R.F.C. OFFICIAL RECORDS FRESNO COUNTY
- F.C.R. FRESNO COUNTY RECORDS
- C.F.R. CALCULATED FROM RECORD DATA
- M.D.B.&M. MOUNT DIABLO BASE AND MERIDIAN
- F.A.F.C.D. FRESNO METROPOLITAN FLOOD CONTROL DISTRICT
- SECTION LINE
- EXISTING PROPERTY LINE/RIGHT OF WAY LINE
- EASEMENT LINE
- EXTENSION OF LINE TO DIMENSION POINT SHOWN
- INDICATES LIMITS OF SUBDIVISION
- INDICATES RELINQUISHMENT OF DIRECT ACCESS RIGHTS PER RI ()
- ▲ PUBLIC STREET EASEMENT PREVIOUSLY DEDICATED PER PARCEL MAPS AT PAGES 61-64 F.C.C.
- ◇ PREVIOUSLY ACCEPTED FOR PUBLIC ROAD PURPOSES PER FRESNO COUNTY BOARD OF SUPERVISORS RESOLUTION MISCELLANEOUS AT PAGE 9, F.C.R. FILED IN VOLUME 29 OF PUBLIC STREET EASEMENT PREVIOUSLY DEDICATED PER TRACT NO. 5337 RECORDED IN VOLUME 74 OF PLATS, PAGES 25-32, F.C.R.
- ◆ PUBLIC STREET EASEMENT PREVIOUSLY DEDICATED PER LOCAL AGENCY EXISTING DEDICATION OR ACCEPTANCE BY LOCAL AGENCY EXISTING TRACT NO. 5461 RECORDED IN VOLUME 79 OF PLATS, PAGES 11-17, F.C.R.
- * PUBLIC STREET EASEMENT PREVIOUSLY GRANTED PER DEC. NO. 2010-073294, O.R.F.C.
- ◆ F.A.F.C.D. EASEMENT PREVIOUSLY GRANTED PER EASEMENT DEED RECORDED JUNE 11, 2007 AS DOC. NO. 2007-0114344, O.R.F.C.

EAST DAKOTA AVENUE
 NB8946.03'W 2642.36' R(108946.03'W 8842.36')
 BASIS OF BEARINGS
 1525.30'



YAMABE & HORN
 ENGINEERING, INC.
 3800 N. BIRCH AVE.
 SUITE 101
 FRESNO, CA 93727
 TEL (509) 244-3123
 FAX (509) 244-3128



LINE TABLE

LINE	BEARING	DISTANCE	RECORD
L1	N81°13'22\"	32.82'	R(10817222\"
L2	N78°04'22\"	68.18'	R(10780422\"
L3	N65°19'19\"	68.18'	R(10651919\"
L4	N55°23'37\"	71.12'	R(10552337\"
L5	N35°23'51\"	17.01'	R(10352351\"
L6	N54°36'09\"	50.00'	R(10543609\"
L7	N54°36'09\"	165.00'	R(10543609\"
L8	N35°23'51\"	39.55'	R(10352351\"
L9	N54°36'09\"	60.00'	R(10543609\"
L10	N35°23'51\"	17.76'	R(10352351\"
L11	N12°26'53\"	12.51'	R(10122653\"
L12	S41°50'36\"	150.00'	
L13	S43°12'26\"	150.00'	
L14	S60°37'35\"	43.12'	
L15	S29°22'22\"	57.25'	
L16	S89°55'49\"	49.85'	
L17	S10°04'11\"	100.30'	
L18	S10°04'11\"	50.00'	
L19	S13°32'26\"	15.73'	
L20	S33°23'31\"	137.58'	
L21	S54°36'09\"	147.63'	
L22	S13°32'26\"	19.22'	
L23	S01°32'57\"	63.81'	
L24	S45°14'20\"	18.39'	
L25	S70°27'53\"	35.31'	

CURVE TABLE

CURVE	RADIUS	DELTA	LENGTH	RECORD
C1	610.00'	29°51'45\"	317.93'	R(261610.00)
C2	610.00'	143°20'5\"	154.74'	R(261610.00)
C3	610.00'	15°19'40\"	163.19'	R(261610.00)
C4	720.00'	12°15'0\"	171.44'	
C5	870.00'	13°50'04\"	210.07'	
C6	125.00'	3°58'57\"	8.89'	
C7	75.00'	26°13'52\"	34.34'	
C8	700.00'	4°26'50\"	54.33'	
C9	540.00'	28°02'25\"	264.27'	
C10	263.97'	35°10'05\"	174.30'	R(305106.00)

BASIS OF BEARINGS
 THE NORTH LINE OF THE SOUTHWEST QUARTER OF SECTION 22,
 TOWNSHIP 13 SOUTH, RANGE 21 EAST, MOUNT DIABLO BASE
 AND MERIDIAN WAS SIGNED ON PARCEL MAP NO. 2004-29
 AND PARCEL MAP NO. 2005-0145342, PAGES 61-64,
 F.C.R. TAKEN TO BE NORTH 89°46'03\" WEST.

FINAL MAP OF

TRACT NO. 6163

PHASE 2 OF VESTING TENTATIVE MAP NO. 5571
 BEING A MERGER OF AND RESUBDIVISION OF OUTLOT 5 OF TRACT 6571, A PORTION OF
 PARCEL 58 OF THE UNSUBDIVIDED REMAINDER OF PARCEL 4 OF PARCEL MAP 2004-29
 IN THE SOUTHWEST 1/4 OF SECTION 22, T.13S., R.21E., M.D.B.&M.
 IN THE CITY OF FRESNO, COUNTY OF FRESNO, STATE OF CALIFORNIA
 SURVEYED AND PLATTED IN JUNE 2016 BY YAMABE & HORN ENGINEERING, INC.
 CONSISTING OF FIVE SHEETS, SHEET 4 OF 5

LEGEND

- MONUMENT FOUND & ACCEPTED 3/4" IRON PIPE DOWN 6" TAGED LS 6915 UNLESS OTHERWISE NOTED
- ⊙ SET 3/4" X 30" IRON PIPE UP 4" IN 5" DIAMETER X 30' P.C.C. MONUMENT, DOWN 6" TAGED LS 7923
- R1 () RECORD DATA PER PARCEL MAP NO. 2004-29 RECORDED IN BOOK 65 OF PARCEL MAPS AT PAGES 63-64, F.C.R.
- R2 () RECORD DATA PER TRACT NO. 5888 RECORDED IN VOLUME 79 OF PLATS, PAGES 34-37, F.C.R.
- R3 () RECORD DATA PER TRACT NO. 5571 RECORDED IN VOLUME 85 OF PLATS, PAGES 34-37, F.C.R.
- R4 () RECORD DATA PER DOCUMENT NO. 2005-0146342 RECORDED JUNE 30, 2005, F.C.R.
- CR CORNER RECORD ON FILE WITH THE FRESNO COUNTY SURVEYOR
- O.R.F.C. OFFICIAL RECORDS FRESNO COUNTY
- F.C.R. FRESNO COUNTY RECORDS
- C.F.R. CALCULATED FROM RECORD DATA
- (R) RADIAL

- SECTION LINE
- EXISTING PROPERTY LINE/RIGHT OF WAY LINE
- EASEMENT LINE
- EXTENSION OF LINE TO DIMENSION POINT SHOWN
- ===== INDICATES LIMITS OF SUBDIVISION
- △ INDICATES REINFORCEMENT OF DIRECT ACCESS RIGHTS
- ◇ PUBLIC STREET EASEMENT PREVIOUSLY DEDICATED PER PARCEL MAPS AT PAGES 63-64, F.C.R.
- ▲ PREVIOUSLY ACCEPTED FOR PUBLIC ROAD PURPOSES PER FRESNO COUNTY BOARD OF SUPERVISORS RESOLUTION MARCH 10, 2015, FILED IN VOLUME 29 OF MISCELLANEOUS AT PAGE 3, F.C.R.
- ◆ PUBLIC STREET EASEMENT PREVIOUSLY DEDICATED PER TRACT NO. 5237 RECORDED IN VOLUME 74 OF PLATS, PAGES 25-28, F.C.R.
- ◆ PUBLIC STREET EASEMENT PREVIOUSLY DEDICATED PER TRACT NO. 5237 RECORDED IN VOLUME 74 OF PLATS, PAGES 25-28, F.C.R. PER ENGINEER COLONY, NO. OFFER OF DEDICATION OR ACCEPTANCE BY LOCAL AGENCY EXISTING

THE REAL PROPERTY DESCRIBED BELOW IS DEDICATED AS AN EASEMENT FOR PUBLIC PURPOSES

- ▲ NOW OFFERED FOR DEDICATION FOR PUBLIC STREET EASEMENT PURPOSES
- PRUE PLANTING & PUBLIC UTILITY EASEMENT NOW OFFERED FOR DEDICATION FOR PUBLIC USE
- PIE PUBLIC UTILITY EASEMENT NOW OFFERED FOR DEDICATION FOR PUBLIC USE
- PE PEDESTRIAN EASEMENT NOW OFFERED FOR DEDICATION FOR PUBLIC USE
- LE LANDSCAPE EASEMENT NOW OFFERED FOR DEDICATION FOR PUBLIC USE

LANDSCAPE EASEMENT PURPOSES FOR THE RESPONSIBILITY OF THE MASTER HOMEOWNERS ASSOCIATION.

BASIS OF BEARINGS:

THE NORTH LINE OF THE SOUTHWEST QUARTER OF SECTION 22, TOWNSHIP 13 SOUTH, RANGE 21 EAST, MOUNT DIABLO BASE AND MERIDIAN AS SHOWN ON PARCEL MAP NO. 2004-29 RECORDED IN BOOK 65 OF PARCEL MAPS AT PAGES 63-64, F.C.R. TAKEN TO BE NORTH 89°46'03" WEST.

NOTE

SET 3/4" X 30" IRON PIPE DOWN 6" TAGED LS 7923 OR BRASS TAG STAMPED LS 7923 FLUSH WITH CONCRETE SURFACE AT ALL LOT CORNERS, ANGLE POINT OR POINTS OF CURVATURE, UNLESS OTHERWISE NOTED.
 SEE SHEET 5 FOR COMPLETE LINE, CURVE & RADIAL TABLES
 OUTLOT A-USE WILL BE FOR PUBLIC PARK PURPOSES AND OWNERSHIP AND MAINTENANCE TO REMAIN AND BE THE RESPONSIBILITY OF THE MASTER HOMEOWNERS ASSOCIATION.
 OUTLOT B-USE WILL BE FOR FUTURE DEVELOPMENT

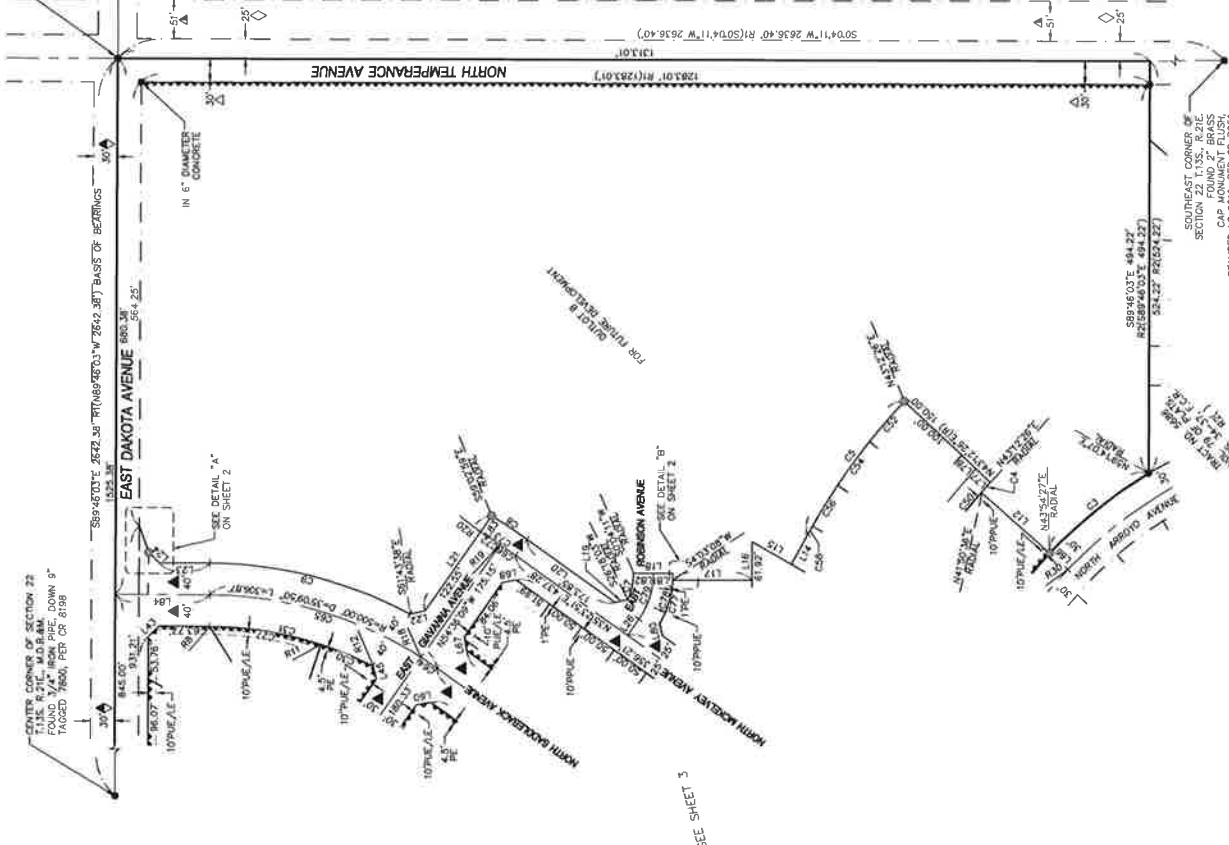
**YAMABE & HORN
 ENGINEERING, INC.**

2400 N. BULL VALLEY
 SUITE 101
 FRESNO, CA 93727

TEL (559) 244-8123
 FAX (559) 244-3120

F:\2016\16-186\Wg\Maps\Final Map\16-186-FM_04.dwg

EAST 1/4 CORNER OF SECTION 22, T.13S., R.21E., M.D.B.&M. FOUND 3/4" IRON PIPE FLUSH WITH CONCRETE SURFACE AT PAGE 63 OF RECORD OF SURVEYS 261 LS 7923 TAG



SOUTHEAST CORNER OF SECTION 22, T.13S., R.21E., M.D.B.&M. FOUND 2" BRASS CAP MONUMENT FLUSH WITH CONCRETE SURFACE AT PAGE 64 OF RECORD OF SURVEYS 261 LS 7923 TAG

STAMPED LS 6915, PER GN 7859

SEE SHEET 3

