

EXHIBIT B

IN



TERRITORY TO BE ANNEXED TO THE CITY CFD NO. 11

BOUNDARY LINE OF NEW TERRITORY

NOT TO SCALE



DOC. _____

FILED IN THE OFFICE OF THE CITY CLERK OF THE CITY OF FRESNO THIS ____ DAY OF _____, 2017.

ATTEST:



YVONNE SPENCE, CMC
CITY CLERK OF THE CITY OF FRESNO

BY: _____
DEPUTY

I HEREBY CERTIFY THAT THE ANNEXATION MAP NO. 74 OF THE COMMUNITY FACILITIES DISTRICT NO. 11, CITY OF FRESNO, COUNTY OF FRESNO, STATE OF CALIFORNIA WAS ADOPTED BY THE COUNCIL OF THE CITY OF FRESNO BY RESOLUTION NO. 2017-__ ON _____, 2017.

ATTEST:



YVONNE SPENCE, CMC
CITY CLERK OF THE CITY OF FRESNO

BY: _____
DEPUTY

THIS ANNEXATION MAP NO. 74 OF THE CITY OF FRESNO COMMUNITY FACILITIES DISTRICT NO. 11, WAS FILED THIS ____ DAY OF _____, 2017 AT THE HOUR OF ____ O'CLOCK __ M. AT BOOK __, PAGE ____ OF MAPS OF ASSESSMENT AND COMMUNITY FACILITIES DISTRICTS IN THE OFFICE OF THE COUNTY RECORDER IN THE COUNTY OF FRESNO, STATE OF CALIFORNIA

PAUL DICTOS, C.P.A.
COUNTY RECORDER OF THE COUNTY OF FRESNO

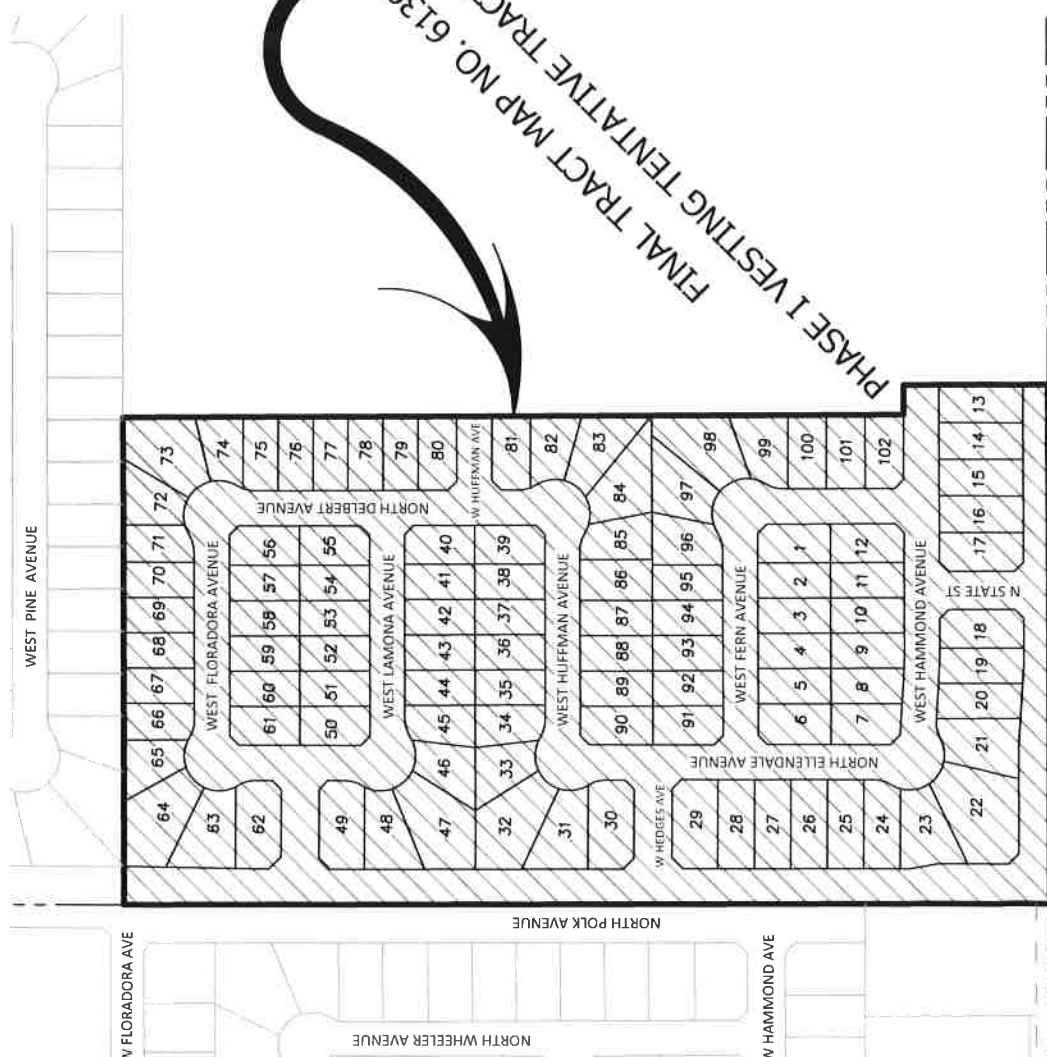
BY: _____

REFERENCE: BOUNDARY MAP OF CITY OF FRESNO COMMUNITY FACILITIES DISTRICT NO. 11, RECORDED NOVEMBER 8, 2005 AT BOOK 41, PAGE 61 OF ASSESSMENT AND COMMUNITY FACILITIES DISTRICTS IN THE OFFICE OF THE RECORDER IN THE COUNTY OF FRESNO, STATE OF CALIFORNIA

NOTE: FOR PARCEL DIMENSIONS, SEE ASSESSOR'S MAP BOOK

PAGES: _____

CITY OF FRESNO - Public Works Department	
ANNEXATION MAP NO. 74 OF COMMUNITY FACILITIES DISTRICT NO. 11 OF THE CITY OF FRESNO, FRESNO COUNTY, CALIFORNIA	CONSTR. ENGR. _____ OFFICE ENGR. _____ CITY ENGR. _____ SR. ENR. ALJAIN _____ SHEET NO. 1 ENR. ENR. _____ OF 1 SHEETS DATE: JANUARY 3, 2017 SCALE: _____



FINAL TRACT MAP NO. 6139
PHASE I VESTING TENTATIVE TRACT MAP NO. 6139