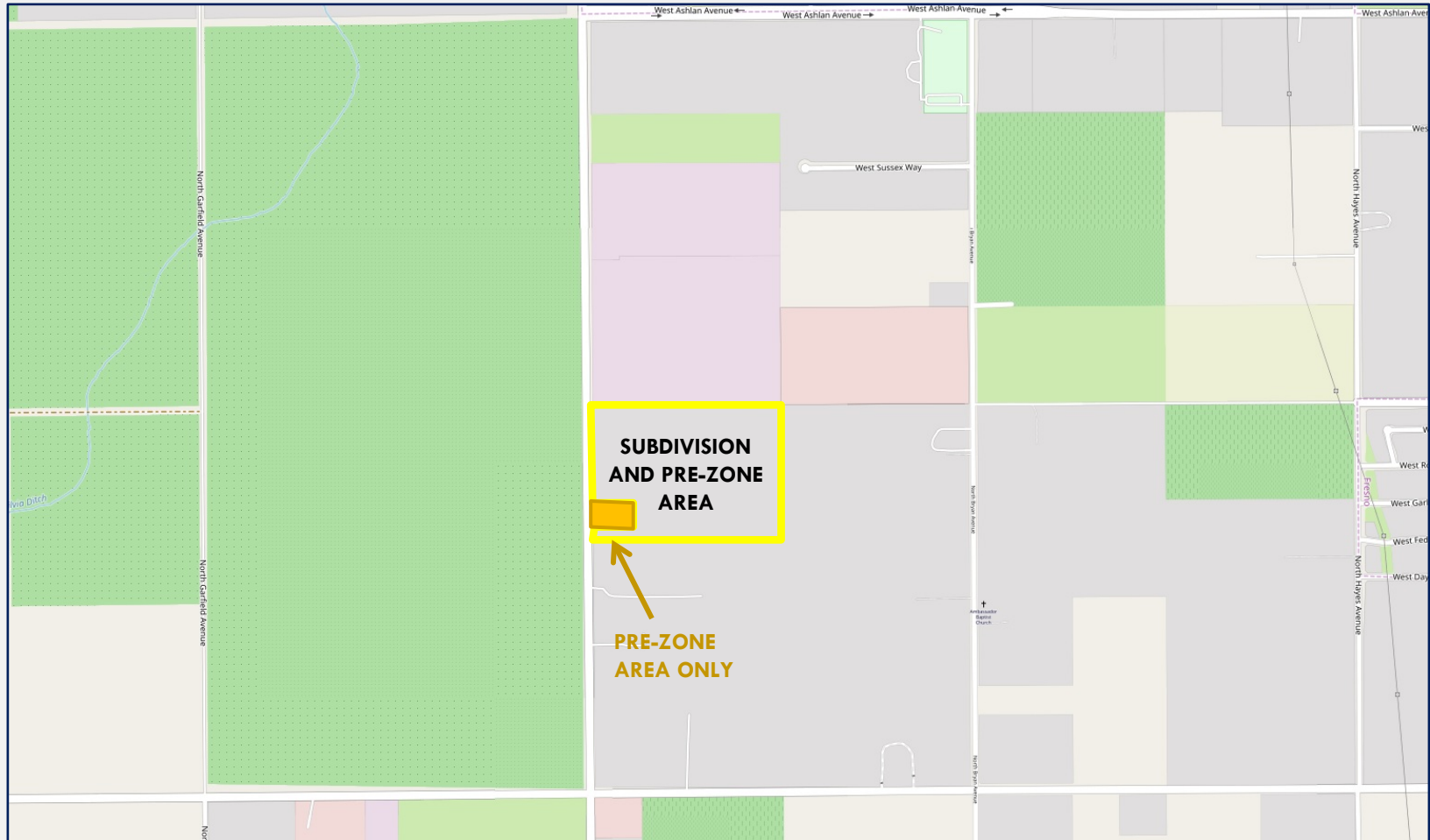


CONSIDERATION OF
PLAN AMENDMENT APPLICATION No. P18-01089;
PRE-ZONE APPLICATION No. P18-01089;
VESTING TENTATIVE TRACT MAP No. 6237/UGM;
AND
THE RELATED ENVIRONMENTAL FINDING FOR
ENVIRONMENTAL ASSESSMENT No. P18-01089/T-
6237

VICINITY MAP



EXISTING GENERAL PLAN MAP

From:

(±18.07 ac.) –
Residential –
Medium Density

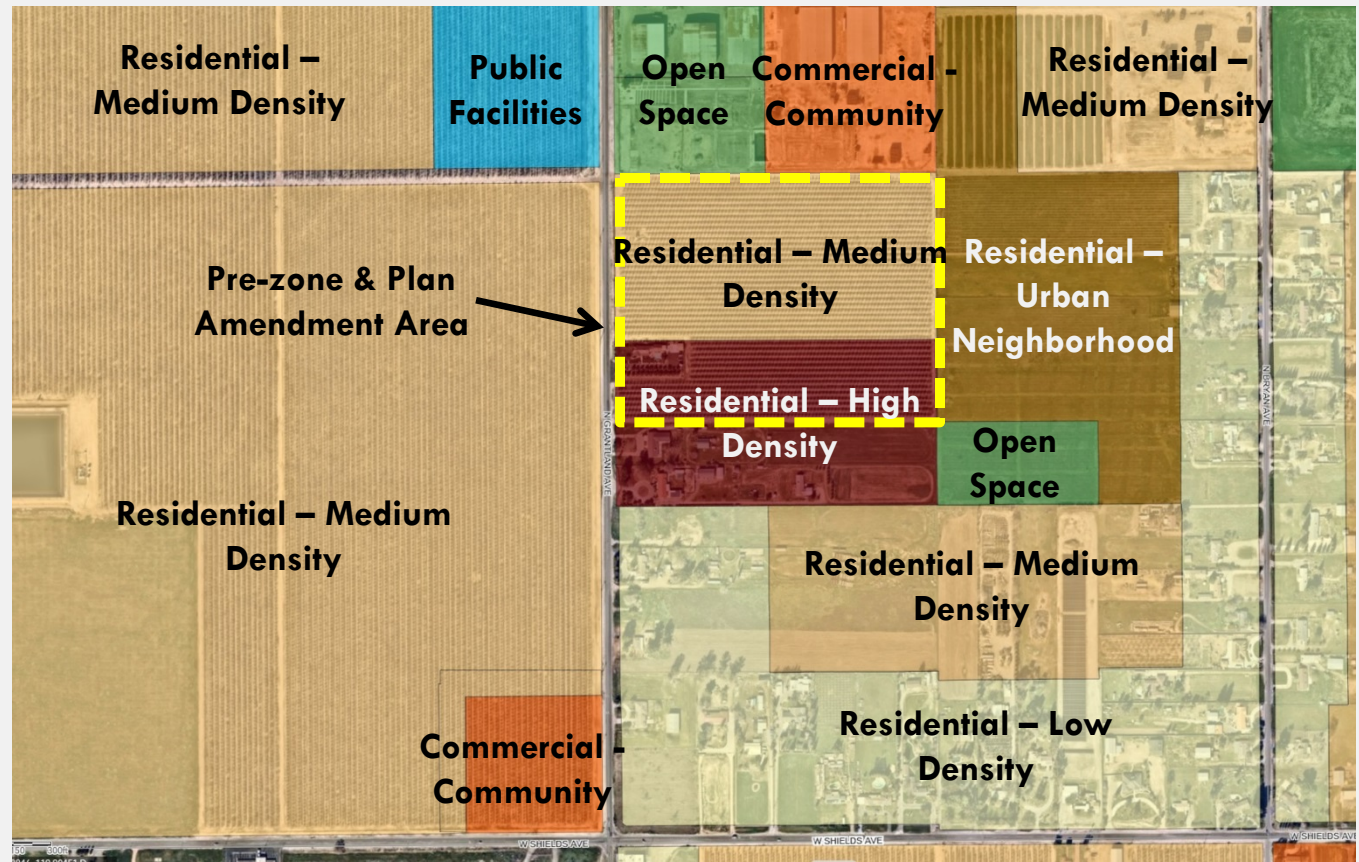
(±8.85 ac.) –
Residential – High
Density

To:

(±26.92 ac.) –
Residential –
Medium Low
Density

Pre-zone

±26.92 ac. from
Fresno County RR to
RS-4



SUBDIVISION MAP

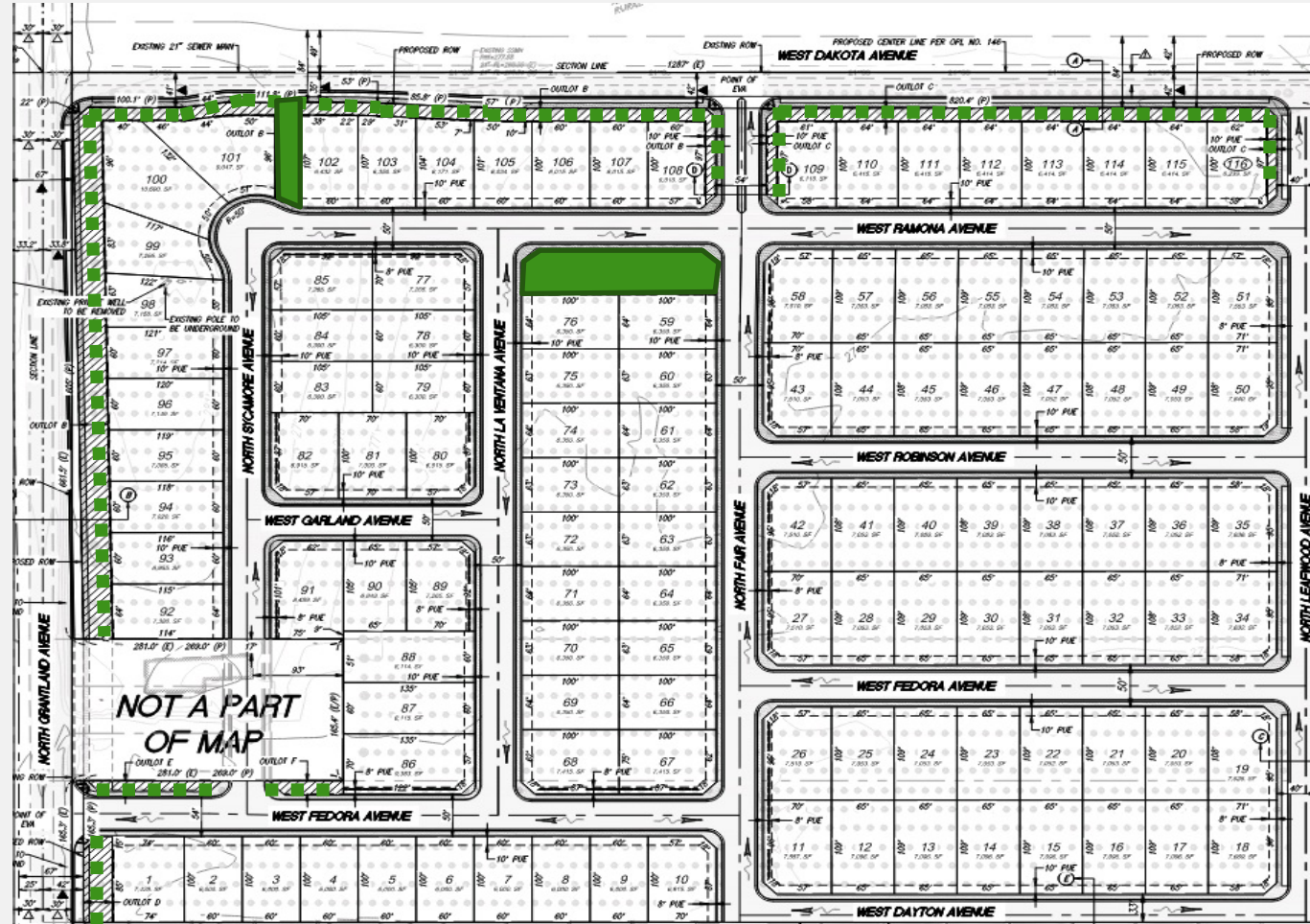
26.92 ACRES

116 LOTS

4.31 DU/AC

AVERAGE LOT
SIZE: 6,926 S.F.

RS-4
DEVELOPMENT
STANDARDS
DISTRICT 1 PRC
RECOMMENDS
APPROVAL (3-0)



AERIAL MAP WITH SUBDIVISION

