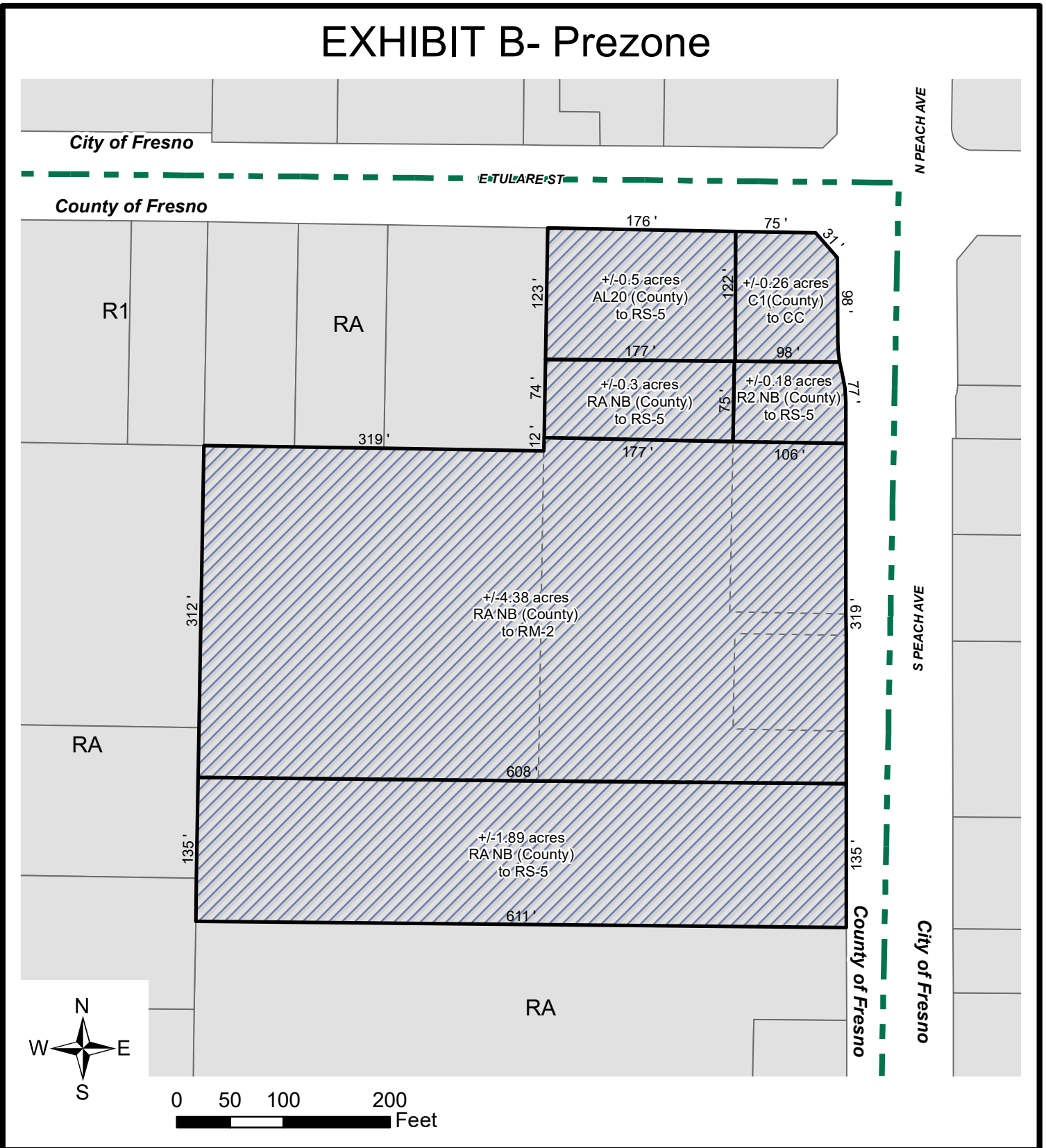


Exhibit G

# EXHIBIT B- Prezone



**P19-06060**

**APN: 463-090-10,11,27,28,29,57,59,43**

**Southwest corner of E Tulare Street and S Peace Avenue**

Proposes to rezone ±4.38 acres from Fresno County RA NB (Single Family Residential Agriculture/Neighborhood Beautification) zone district to RM-2 (Residential Multi-Family, Urban Neighborhood) zone district, ±1.89 acres from Fresno County RA NB (Single Family Residential/Neighborhood Beautification) zone district to RS-5 (Residential Single-Family, Medium Density) zone district, ±0.52 acres from Fresno County AL20 (Limited Agriculture) zone district to RS-5 (Residential Single-Family, Medium Low Density) zone district, ±0.26 acres from Fresno County C1 (Neighborhood Shopping Center) zone district to CC (Commercial – Community) zone district, and ±0.18 acres from Fresno County R2 NB (Low Density Multiple Family Residential) zone district to RS-5 (Residential Single-Family, Medium Low Density) zone district, and ±0.3 acres from Fresno County RA NB (Single Family Residential Agriculture/Neighborhood Beautification) zone district to RS-5 (Residential Single-Family, Medium Low Density) zone district.



City Limits

