

RECEIVED

2015 AUG 26 AM 9 25

Agenda Item: ID#15-724 (3:15 P.M.)

Date: 8/27/15



Supplemental Information Packet

Agenda Related Item(s) – ID#15-724 (3:15 P.M.)

Contents of Supplement: PowerPoint Presentation

Item(s)

CONTINUED HEARING to consider Rezone Application No. R-15-008, related Environmental Assessment No. R-15-008/S-15-068/ANX-15-001 and a Resolution of Application to annex said territory to the City of Fresno and detach said territory from the Fresno County Fire Protection District and the Kings River Conservation District which were filed by Dirk Poeschel on behalf of John Brelsford (Council District No. 3)

Supplemental Information:

Any agenda related public documents received and distributed to a majority of the City Council after the Agenda Packet is printed are included in Supplemental Packets. Supplemental Packets are produced as needed. The Supplemental Packet is available for public inspection in the City Clerk's Office, 2600 Fresno Street, during normal business hours (main location pursuant to the Brown Act, G.C. 54957.5(2)). In addition, Supplemental Packets are available for public review at the City Council meeting in the City Council Chambers, 2600 Fresno Street. Supplemental Packets are also available on-line on the City Clerk's website.

Americans with Disabilities Act (ADA):

The meeting room is accessible to the physically disabled, and the services of a translator can be made available. Requests for additional accommodations for the disabled, sign language interpreters, assistive listening devices, or translators should be made one week prior to the meeting. Please call City Clerk's Office at 621-7650. Please keep the doorways, aisles and wheelchair seating areas open and accessible. If you need assistance with seating because of a disability, please see Security.

CONSIDERATION OF:

**REZONE NO. R-15-008, ANNEXATION NO. ANX-15-001 and
ENVIRONMENTAL FINDING FOR ASSESSMENT NO. R-15-
008/S-15-068/ANX-15-001**

FILED BY DIRK POESCHEL ON BEHALF OF JOHN BRESLSFORD

*City Council Meeting
August 27, 2015*

Project Summary

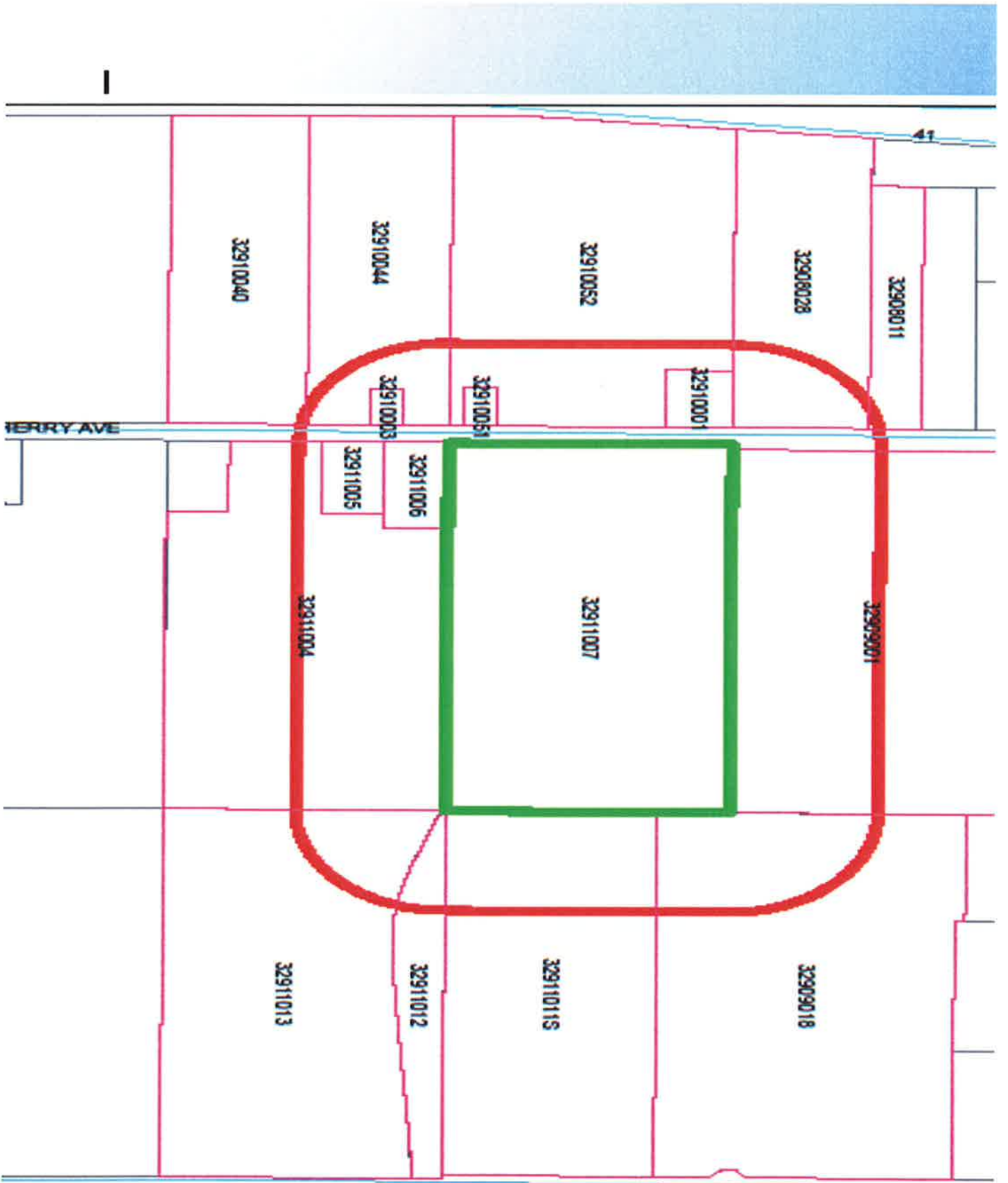
- Project pertains to 19.54± acres of property. The applicant proposes the construction of a 372,960 square-foot state of the art industrial building for light and heavy industrial companies seeking warehousing to store and distribute goods.
- Rezone R-15-008 proposes to prezone the property from the AL-20 (*Limited 20-Acre Agricultural [Fresno County]*) zone district to the M-3/UGM (*Heavy Industrial/Urban Growth Management [Fresno City]*) zone district.

Planning Commission Action

- Recommended that the Council adopt a Finding of Conformity as Environmental Assessment No. R-15-008/S-15-068/ANX-15-001
- Recommended that the Council approve Rezone Application No. R-15-008 which proposes to amend the Official Zone Map and prezone an approx. 19.54 acre subject site located on the east side of South Cherry Ave., south of East North Ave. from the AL-20 (*Limited 20-Acre Agricultural [Fresno County]*) zone district to the M-3/UGM (*Heavy Industrial/Urban Growth Management*)[*Fresno City*] zone district;

Planning Commission Action

- Planning Commission approved Site Plan Review S-15-068. The approval by the Planning Commission of the SPR is contingent upon Council approval of Rezone, the Environmental Assessment and Resolution of Application to annex the territory to the city. The SPR includes numerous conditions such as required number street trees, number parking spaces, undergrounding of a canal, payment of flood control fees, requirement to annex to Community Facilities District No. 9, the widening of South Cherry Avenue and related requirements.



STATE HIGHWAY 41

S CHERRY AVE S CHERRY AVE

S CHERRY AVE

E MUSCAT AVE

E MUSCAT AVE ALIGNMENT

S EAST AVE S EAST AVE

S EAST AVE

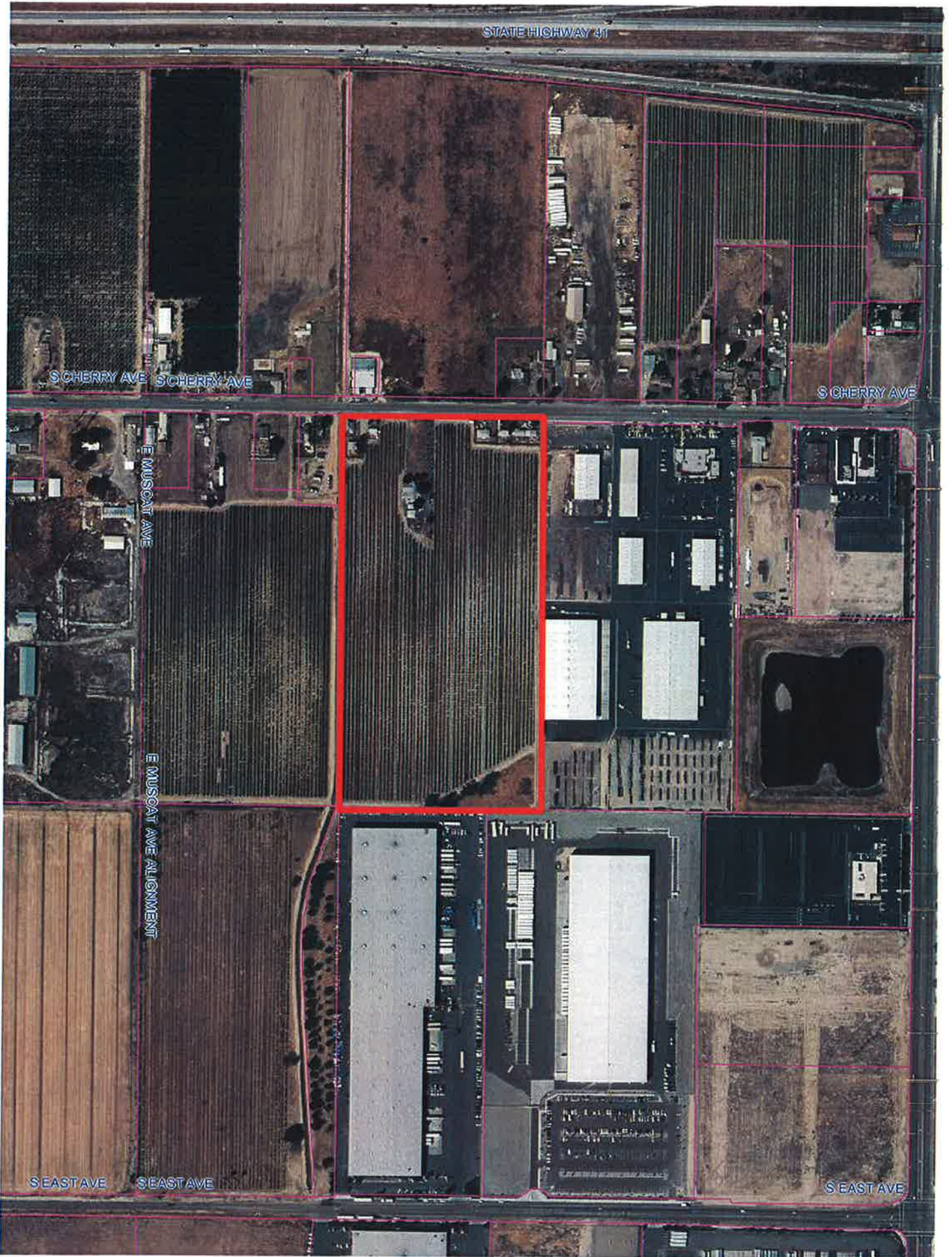
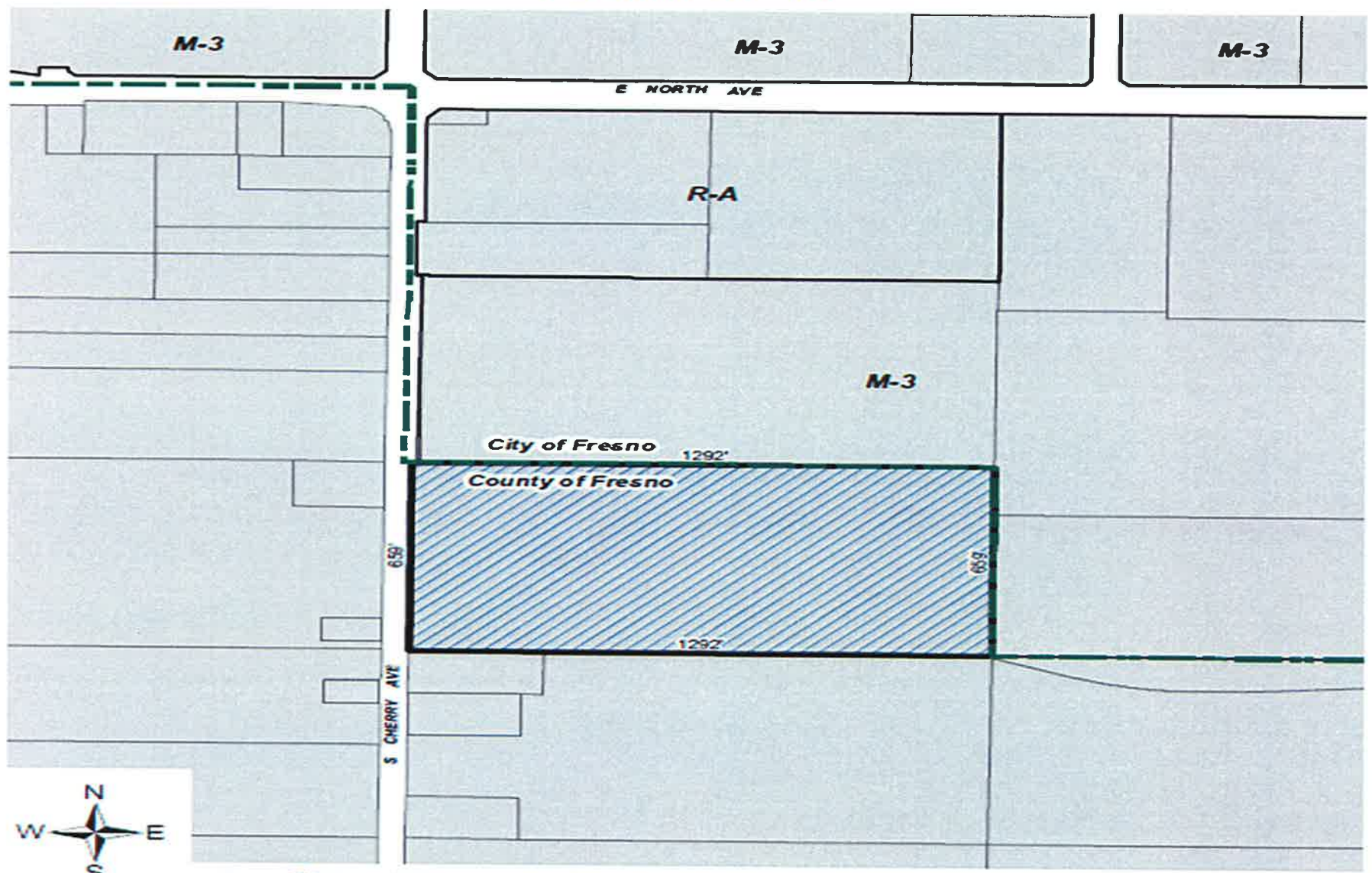


EXHIBIT A



Consistent with Plans

- Project is consistent with the General Plan, the Edison Community Plan and the North Avenue Industrial Triangle Specific Plan (which encourages industrial development)
- Project was also approved by the District 3 Plan Implementation Committee on July 27, 2015

Recommendations

ADOPT a Finding of Conformity for Environmental Assessment No. No. R-15-008/S-15-068/ANX-15-001;

ADOPT BILL approving Rezone Application No. R-15-008 which proposes to amend the Official Zone Map and prezone an approximately 19.54 acre subject site located on the east side of South Cherry Avenue, south of East North Avenue from the AL-20 (*Limited 20-Acre Agricultural [Fresno County]*) zone district to the M-3/UGM (*Heavy Industrial/Urban Growth Management Fresno City*) zone district;

RECOMMENDATION

- **ADOPT** a Resolution of Application to annex said territory to the City of Fresno and detach said territory from the Fresno County Fire Protection District and the Kings River Conservation District.

STATE HIGHWAY 41

S CHERRY AVE S CHERRY AVE

S CHERRY AVE

E MUSCAT AVE

E MUSCAT AVE ALIGNMENT

SEAST AVE SEAST AVE

S EAST AVE

