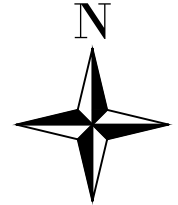


PUBLIC WORKS DEPARTMENT

TRAFFIC OPERATIONS AND PLANNING DIVISION

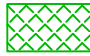
FEATURES TO BE ADDED BY ANNEXATION NO. 137

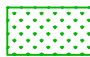
COMMUNITY FACILITIES DISTRICT NO. 11



NOT TO SCALE
January 3, 2023

LANDSCAPE AND IRRIGATION:

 BUFFERS/PARKWAYS/MEDIAN
TREES & SHRUBS = 52,755 SF

 TURF & BEDS
GROUND COVER = 19,439 SF

SMALL TREES = 9 EA

LARGE TREES = 80 EA

CONCRETE IMPROVEMENTS:

 CURB & GUTTER = 15,803 LF

VALLEY GUTTER = 5,192 SF

SIDEWALK & CURB RAMPS = 118,792 SF

MEDIAN CURB = 1,952 SF

MEDIAN STAMPED CONCRETE = 3,090 SF


LOCAL STREET PAVEMENT:

 INTERIOR RESIDENTIAL = 260,780 SF


TRAILWAY HARDSCAPE AND AMENITIES:

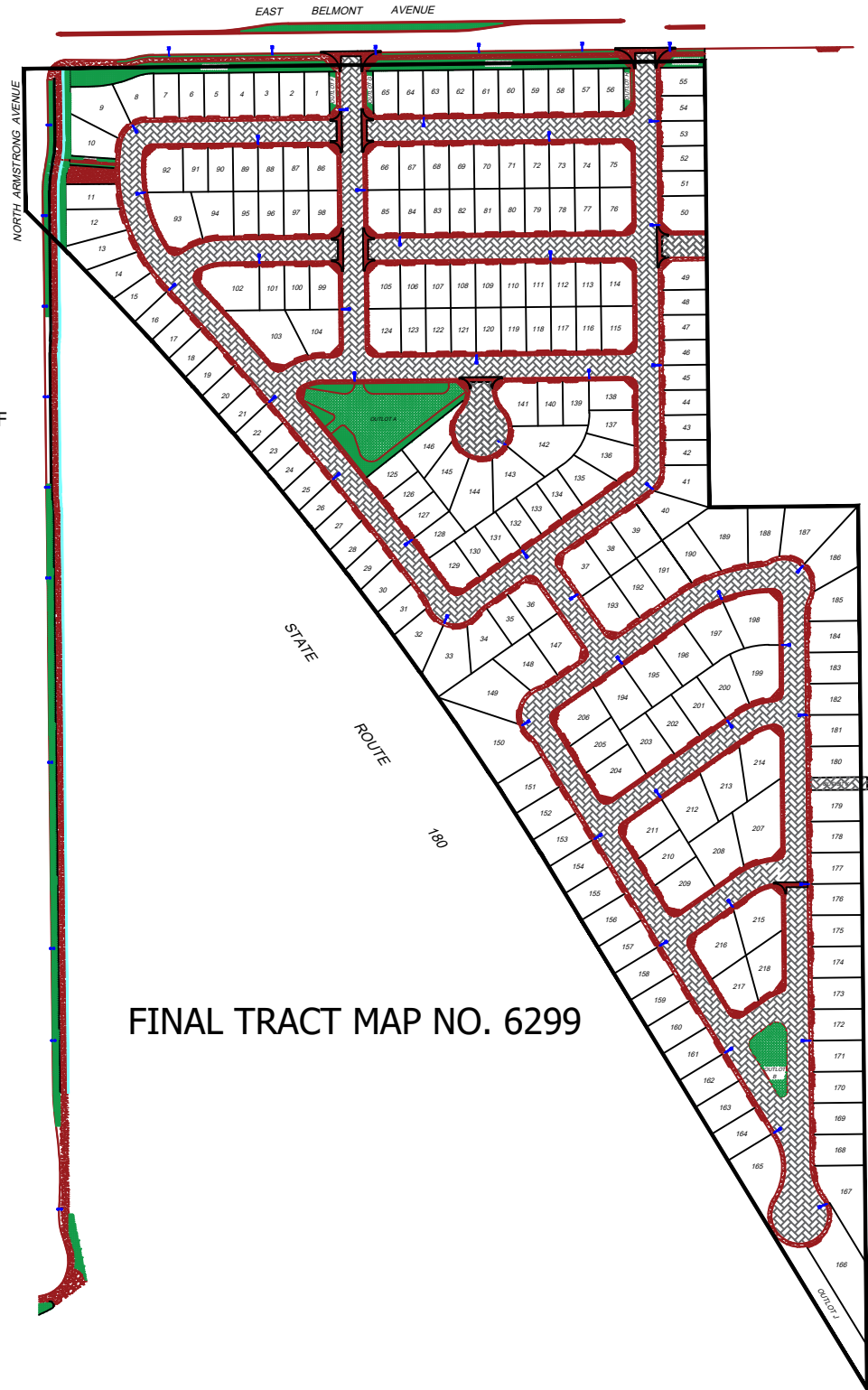
DECOMPOSED GRANITE PATHWAY = 1,356 CF

STREET LIGHTS:

 STANDARD - Embedded = 43 EACH

 STANDARD - Base = 6 EACH

 DUALHEAD ORNAMENTAL = 10 EACH



FINAL TRACT MAP NO. 6299