

ELEVATION FOR MARKETPLACE AT EL PASEO – PHASE 2



SHOPS 6

THEATER - NORTH ELEVATION



THEATER - NORTH ELEVATION - (CONTINUATION)

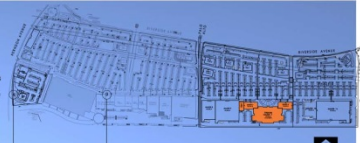
SHOPS 7

RETAIL 2



OVERALL NORTH ELEVATION - THEATER, SHOPS 6 & 7, RETAIL 2

- LEGEND:
- 1. PAINTED OR EIFS FINISH
 - 2. SPLIT FACE BLOCKS
 - 3. PERFORATION BLOCKS
 - 4. EIFS CORNICE
 - 5. COMPOSITE METAL PANEL
 - 6. BUILDING VENTILATION
 - 7. METAL CANOPY
 - 8. STONE VENEER
 - 9. OUTLINE OF FOREGROUND SHOPS
 - 10. BUILDING BEYOND
 - 11. STEEL TRUSS
 - 12. FABRIC AWNING



E-1

EXTERIOR ELEVATIONS- THEATER, SHOPS 6 & 7, RETAIL 2

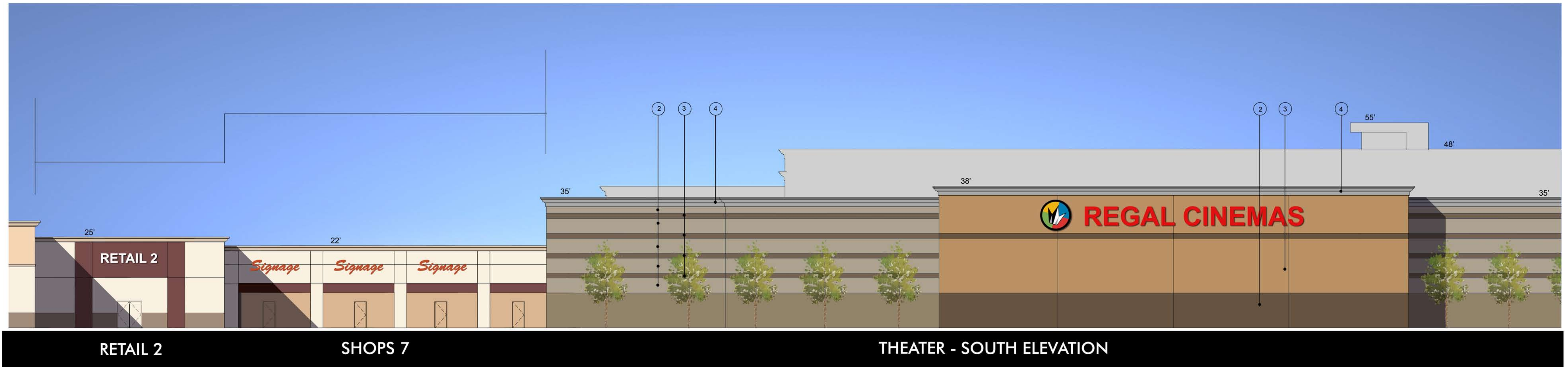
MARKETPLACE AT EL PASEO
 SEC RIVERSIDE & HERNDON AVE.
 FRESNO, CALIFORNIA

DATE: MARCH 31, 2017
 NADEL JOB#: 19075

NADEL RETAIL ARCHITECTS, LLP
 1990 S. BUNDRY DR., FOURTH FLOOR
 LOS ANGELES, CA. 90025
 T.310.826.2100 F.310.826.0182
 WWW.NADELARC.COM



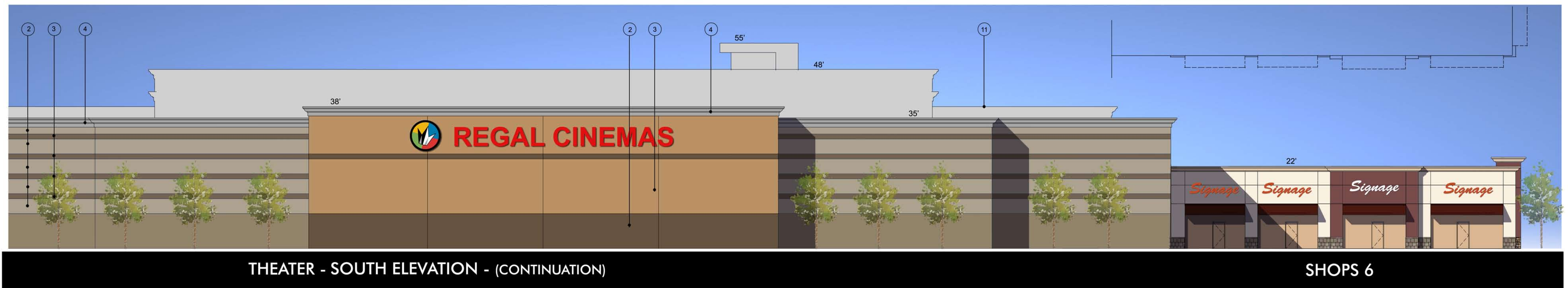
ALL DRAWINGS AND PERTINENT MATERIALS APPEARING HEREIN CONSTITUTE THE ORIGINAL AND UNPUBLISHED WORK OF THE ARCHITECT AND THE SAME MAY NOT BE REPRODUCED, COPIED OR DISSEMINATED WITHOUT THE WRITTEN CONSENT OF THE ARCHITECT. COPYRIGHT NADEL RETAIL ARCHITECTS, LLP. ALL RIGHTS RESERVED.



RETAIL 2

SHOPS 7

THEATER - SOUTH ELEVATION



THEATER - SOUTH ELEVATION - (CONTINUATION)

SHOPS 6



OVERALL SOUTH ELEVATION - THEATER, SHOPS 6 & 7, RETAIL 2

EXTERIOR ELEVATIONS- THEATER, SHOPS 6 & 7, RETAIL 2

MARKETPLACE AT EL PASEO
 SEC RIVERSIDE & HERNDON AVE.
 FRESNO, CALIFORNIA

DATE: MARCH 31, 2017
 NADEL JOB#: 15075

NADEL RETAIL ARCHITECTS, LLP
 1990 S. BUNDY DR., FOURTH FLOOR
 LOS ANGELES, CA. 90025
 T.310.826.2100 F.310.826.0182
 WWW.NADELARC.COM





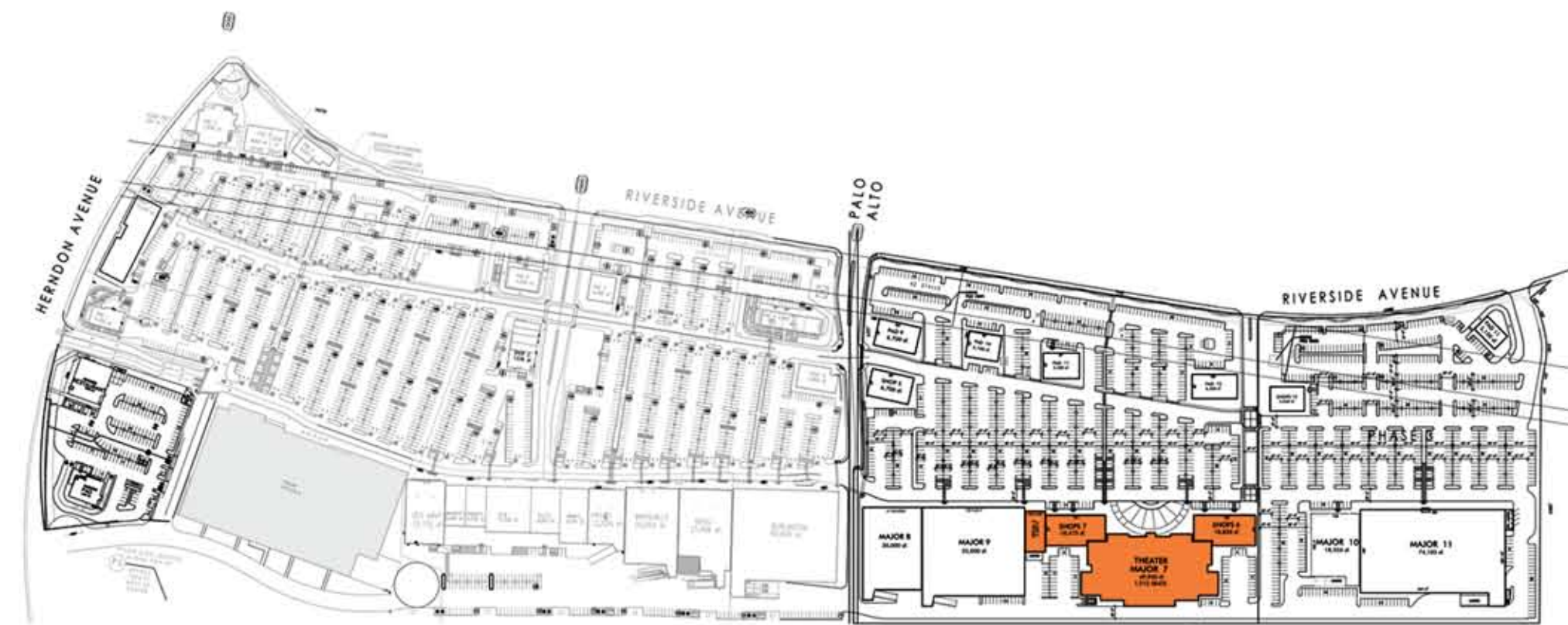
THEATER - EAST ELEVATION

SHOPS 6



SHOPS 7

THEATER - WEST ELEVATION



- LEGEND:
1. PLASTER OR EIFS FINISH
 2. SPLIT FACE BLOCKS
 3. PRECISION BLOCKS
 4. EIFS CORNICE
 5. COMPOSITE METAL PANEL
 6. DECORATIVE LIGHTING
 7. METAL CANOPY
 8. MOVIE POSTERS
 9. STONE VENEER
 10. OUTLINE OF FOREGROUND SHOPS
 11. BUILDING BEYOND
 12. STEEL TRELLIS
 13. FABRIC AWNING

EXTERIOR ELEVATIONS- THEATER, SHOPS 6 & 7, RETAIL 2

MARKETPLACE AT EL PASEO
 SEC RIVERSIDE & HERNDON AVE.
 FRESNO, CALIFORNIA

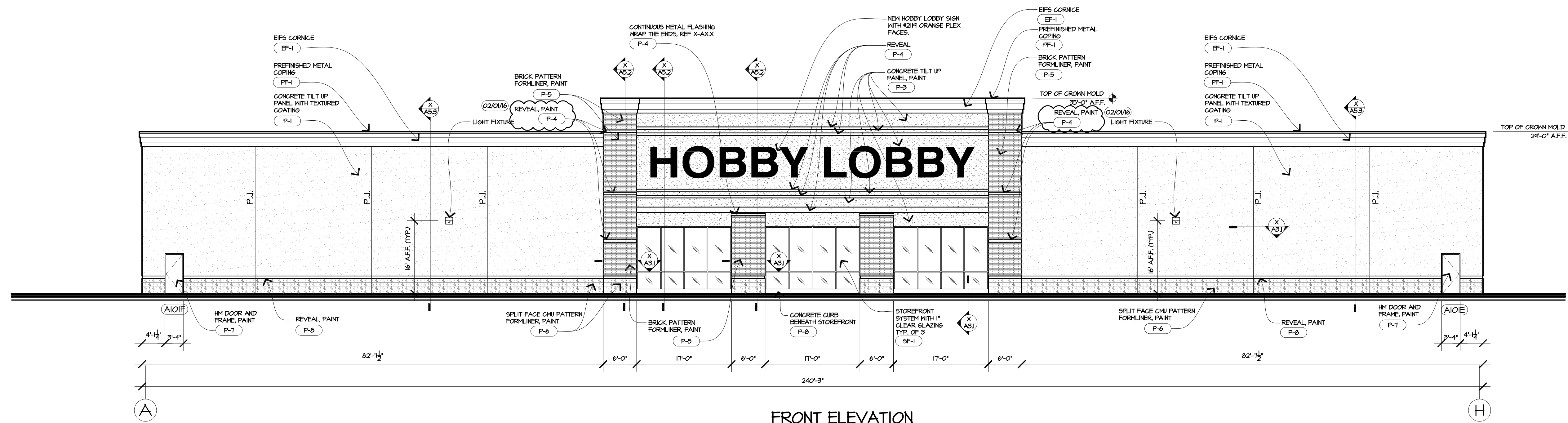
DATE: MARCH 31, 2017
 NADEL JOB#: 15075

NADEL RETAIL ARCHITECTS, LLP
 1990 S. BUNDY DR., FOURTH FLOOR
 LOS ANGELES, CA. 90025
 T.310.826.2100 F.310.826.0182
 WWW.NADELARC.COM

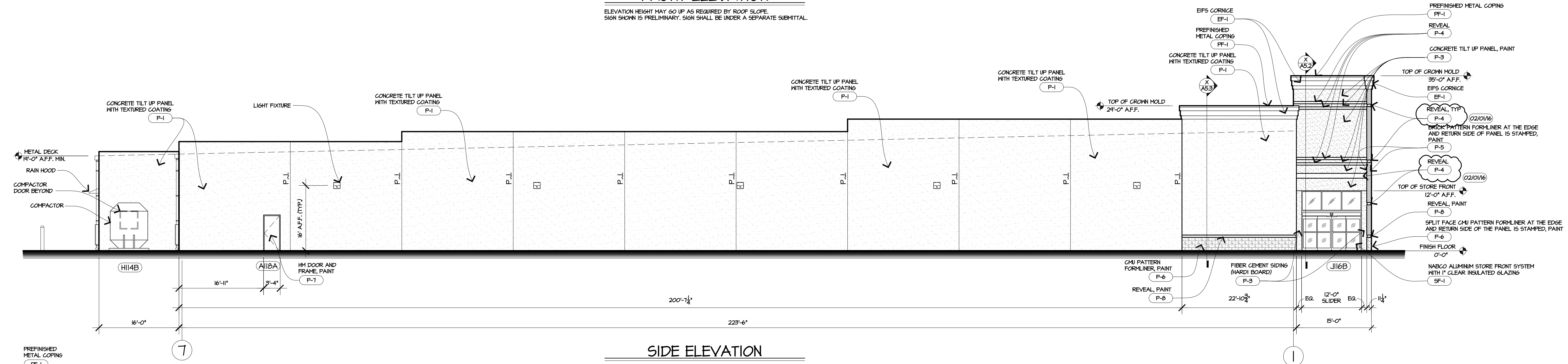
E-3
NADEL

ALL DRAWINGS AND WRITTEN MATERIAL APPEARING HEREIN CONSTITUTE THE ORIGINAL AND UNPUBLISHED WORK OF THE ARCHITECT AND THE SAME MAY NOT BE DUPLICATED, USED OR DISCLOSED WITHOUT THE WRITTEN CONSENT OF THE ARCHITECT. COPYRIGHT: NADEL RETAIL ARCHITECTS, LLP. ALL RIGHTS RESERVED.

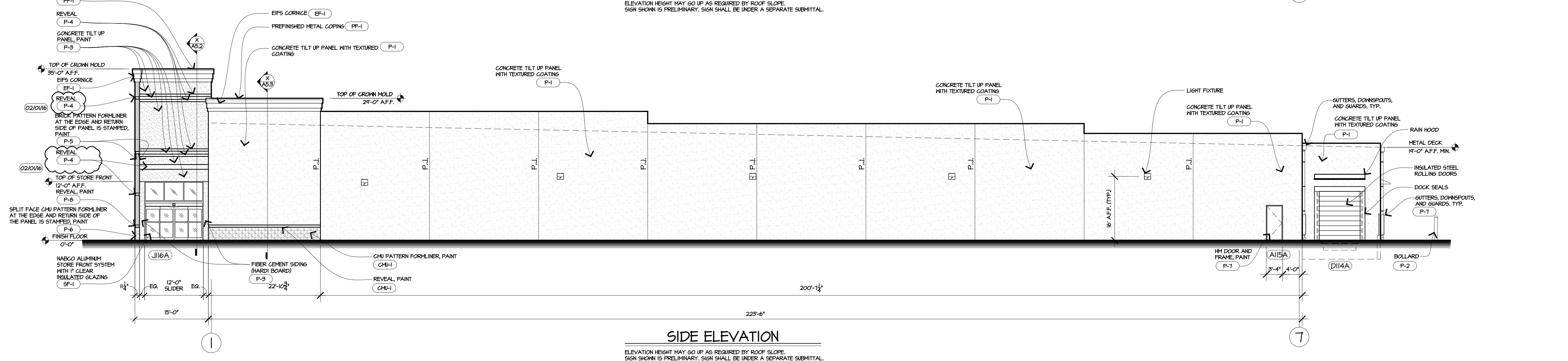
LOCATION AND NAME OF DRAWING FILE: K:\PROJECTS\DETAILS\A3.0-CITY-51-ELEV 2015-12-30.DWG



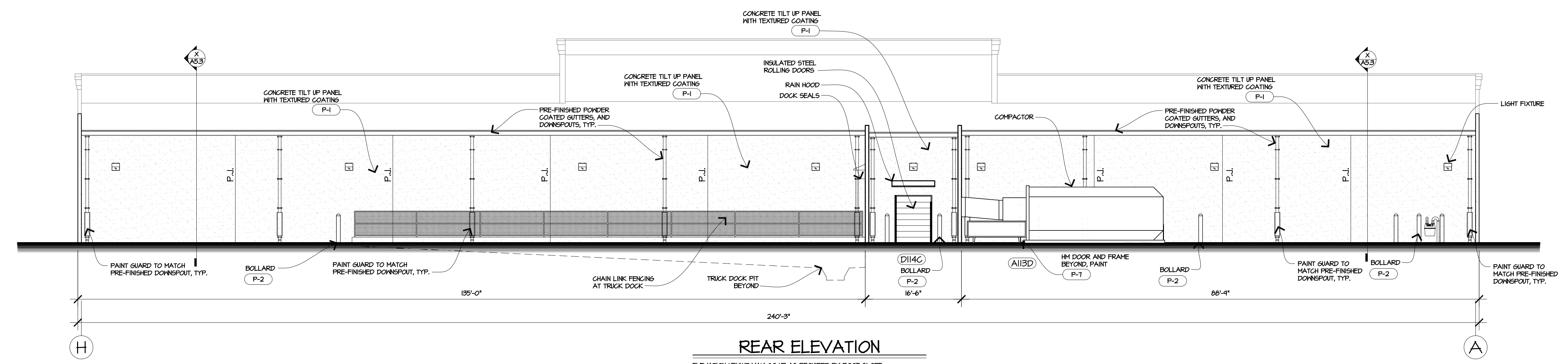
FRONT ELEVATION
ELEVATION HEIGHT MAY GO UP AS REQUIRED BY ROOF SLOPE. SIGN SHOWN IS PRELIMINARY. SIGN SHALL BE UNDER A SEPARATE SUBMITTAL.



SIDE ELEVATION
ELEVATION HEIGHT MAY GO UP AS REQUIRED BY ROOF SLOPE. SIGN SHOWN IS PRELIMINARY. SIGN SHALL BE UNDER A SEPARATE SUBMITTAL.



SIDE ELEVATION
ELEVATION HEIGHT MAY GO UP AS REQUIRED BY ROOF SLOPE. SIGN SHOWN IS PRELIMINARY. SIGN SHALL BE UNDER A SEPARATE SUBMITTAL.



REAR ELEVATION
ELEVATION HEIGHT MAY GO UP AS REQUIRED BY ROOF SLOPE. SIGN SHOWN IS PRELIMINARY. SIGN SHALL BE UNDER A SEPARATE SUBMITTAL.

EXTERIOR MATERIALS LEGEND					
MARK	MATERIAL	MANUFACTURER	MODEL/STYLE	COLOR	REMARKS
EPF-1	EPS	DRYVIT	PB SYSTEM	SN 1561 "GREEK VILLA" [1]	SAND FINISH
PF-1	PREFINISHED METAL	HUGHMAN	TERMINEDGE TE-625	A-12 "SOGOT WHITE"	250 ALUMINUM
SF-1	STOREFRONT SYSTEM	KAWNEER	451 SERIES	"DARK BRONZE"	ANODIZED ALUMINUM
P-1	PAINT	SHERWIN-WILLIAMS	ULTRA-CRETE	SN 1506 "LOGGIA"	MEDIUM TEXTURE
P-2	PAINT	SHERWIN-WILLIAMS	AMA-100 SERIES	SN 4084 "SAFETY YELLOW"	BOLLARDS
P-3	PAINT	SHERWIN-WILLIAMS	ULTRA-CRETE	SN 1504 "TRIK MIT"	MEDIUM TEXTURE
P-4	PAINT	SHERWIN-WILLIAMS	AMA-100 SERIES	SN 1561 "GREEK VILLA"	MEDIUM TEXTURE
P-5	PAINT	SHERWIN-WILLIAMS	ULTRA-CRETE	SN 6040 "TERRA BRN"	NO TEXTURE
P-6	PAINT	SHERWIN-WILLIAMS	ULTRA-CRETE	SN 1024 "FUNCTIONAL GRAY"	NO TEXTURE
P-7	PAINT	SHERWIN-WILLIAMS	AMA-100 SERIES	SN 1506 "LOGGIA" [2]	SEM-GLOSS
P-8	PAINT	SHERWIN-WILLIAMS	ULTRA-CRETE	SN 1024 "FUNCTIONAL GRAY"	MEDIUM TEXTURE

NOTES:
1. COLORS NOTED ABOVE FOR EPS ARE SHERWIN-WILLIAMS COLORS - EPS TO MATCH THOSE COLORS.
2. P-1 FOR ALL DOWNPOUTS, GUTTERS AND DOWNPOUT GUARDS UNLESS NOTED OTHERWISE.
3. PAINT COLORS FOR ALL EXTERIOR STEEL DOORS AND FRAMES TO MATCH ADJACENT COLORS UNLESS NOTED OTHERWISE.
4. SIGNAGE TO BE SUBMITTED UNDER SEPARATE PERMIT FROM BUILDING.
5. ALL PAINTED EXTERIOR TILT-UP SURFACES TO RECEIVE "ULTRA-CRETE" COMMERCIAL APPLICATION PER MANUFACTURERS RECOMMENDATIONS AND PROCEDURES PRIOR TO APPLICATION OF FINAL FINISH COLORS.
6. GC TO OBTAIN HOBBY LOBBY APPROVAL ON MANUFACTURERS AND PATTERNS FOR BRICK AND SPLIT-FACE CMU FORMLINERS.

ARCHITECTURAL LEGEND	
SYMBOL	DESCRIPTION
	DOOR TAG COORDINATE WITH DOOR SCHEDULED
	FIRST LETTER IS DOOR TYPE, THE NUMBER IS THE ROOM NUMBER AND THE LAST LETTER IS THE DOOR IDENTIFICATION FOR THE IDENTIFIED ROOM
	DETAIL NUMBER
	SECTION OR ELEVATION MARKER

NOTE:
GC TO OBTAIN HOBBY LOBBY APPROVAL ON MANUFACTURERS AND PATTERNS FOR BRICK AND SPLIT-FACE CMU FORMLINERS.

HOBBY LOBBY
Design and Development
7707 S.W. 44th St. Oklahoma City, OK 73179
Phone: - Fax: (405) 745-1172
Scale: - Date: -
Drawn by: -
Store address: -
STORE NO. -
A3.0