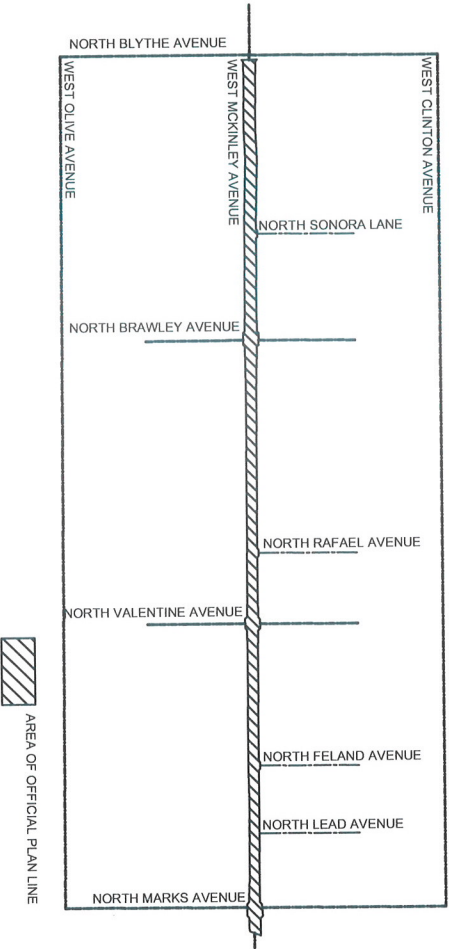


OFFICIAL PLAN LINES

WEST MCKINLEY AVENUE

BETWEEN
NORTH BLYTHE AND MARKS AVENUES

THIS MAP CONSTITUTES PART OF THE GENERAL PLAN LINES OF THE CITY OF FRESNO, CALIFORNIA AND IS FILED IN THE VOLUME ENTITLED "OFFICIAL PLAN LINES - CITY OF FRESNO" IN THE DEVELOPMENT DEPARTMENT.



WE HEREBY CERTIFY THAT THIS MAP CONSTITUTES A PART OF THE OFFICIAL PLAN LINE OF STREETS AND HIGHWAYS BEING A PART OF THE GENERAL PLAN OF THE CITY OF FRESNO, CALIFORNIA, AND ADOPTED BY THE PLANNING COMMISSION OF SAID CITY BY RESOLUTION NO. _____ AT A MEETING HELD ON THE _____ DAY OF _____, 20____, AND CARRIED BY THE AFFIRMATIVE VOTE OF THE MAJORITY OF THE TOTAL MEMBERSHIP OF SAID COMMISSION.

SECRETARY _____ DATE _____

WE HEREBY CERTIFY THAT THIS MAP OF OFFICIAL PLAN LINE WAS ADOPTED BY THE CITY COUNCIL OF THE CITY OF FRESNO ON THE _____ DAY OF _____, 20____ BY ORDINANCE NO. _____ ADOPTED PURSUANT TO ARTICLE 7 OF CHAPTER 12 OF THE FRESNO MUNICIPAL CODE.

ATTEST:
YVONNE SPENCE, CMC
CITY CLERK OF THE CITY OF FRESNO

DEPUTY _____ DATE _____



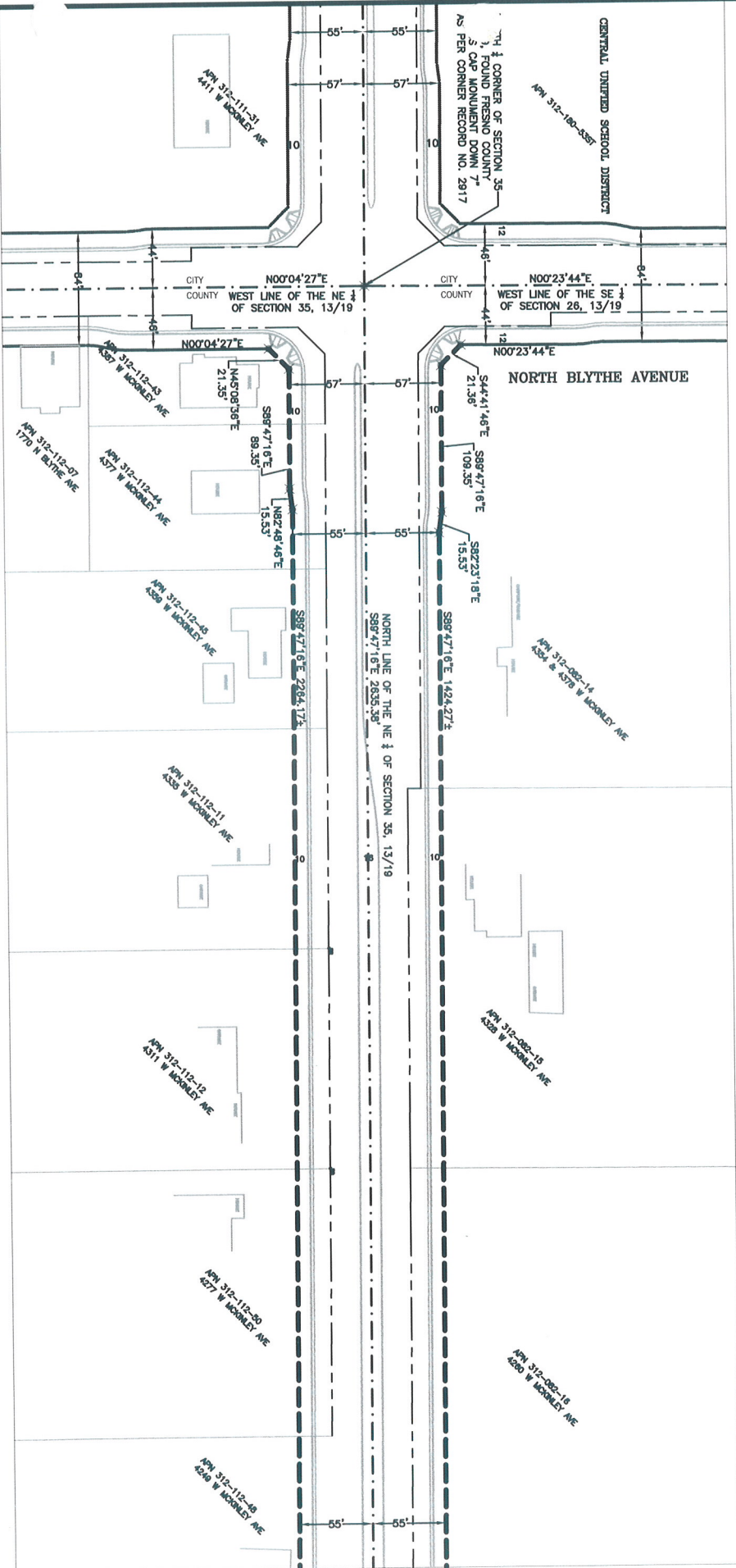
I, THE UNDERSIGNED, DEPUTY CITY ENGINEER OF THE PUBLIC WORKS DEPARTMENT OF THE CITY OF FRESNO, CALIFORNIA HEREBY CERTIFY THAT I HAVE EXAMINED THE OFFICIAL PLAN LINES DEDICATED ON THIS MAP AND I BELIEVE THAT THIS MAP IS TECHNICALLY CORRECT.

DEPUTY CITY ENGINEER _____
DATE _____

INSTRUMENT NO. _____ FILED AND RECORDED AT THE REQUEST OF THE CITY OF FRESNO THE _____ DAY OF _____, 20____ AT _____ MINUTES PAST _____ M. AND RECORDED IN VOLUME _____ OF PRECISE PLANS AT PAGE _____ FRESNO COUNTY RECORDS.
PAUL DICTOS, CPA
COUNTY RECORDER OF THE COUNTY OF FRESNO
BY: _____

SHEET NO. 1 OF 6 SHEETS
PW FILE NO. 09785

DWG BY: A. LILJA 12/15/2013
REV: SEPTEMBER 24, 2013
REV: JANUARY 6, 2014
REV: JUNE 3, 2014



SCALE: 1" = 50'

NOTE: ALL SETBACKS SHALL BE MEASURED FROM THE "OFFICIAL PLAN LINES".

OFFICIAL PLAN LINES

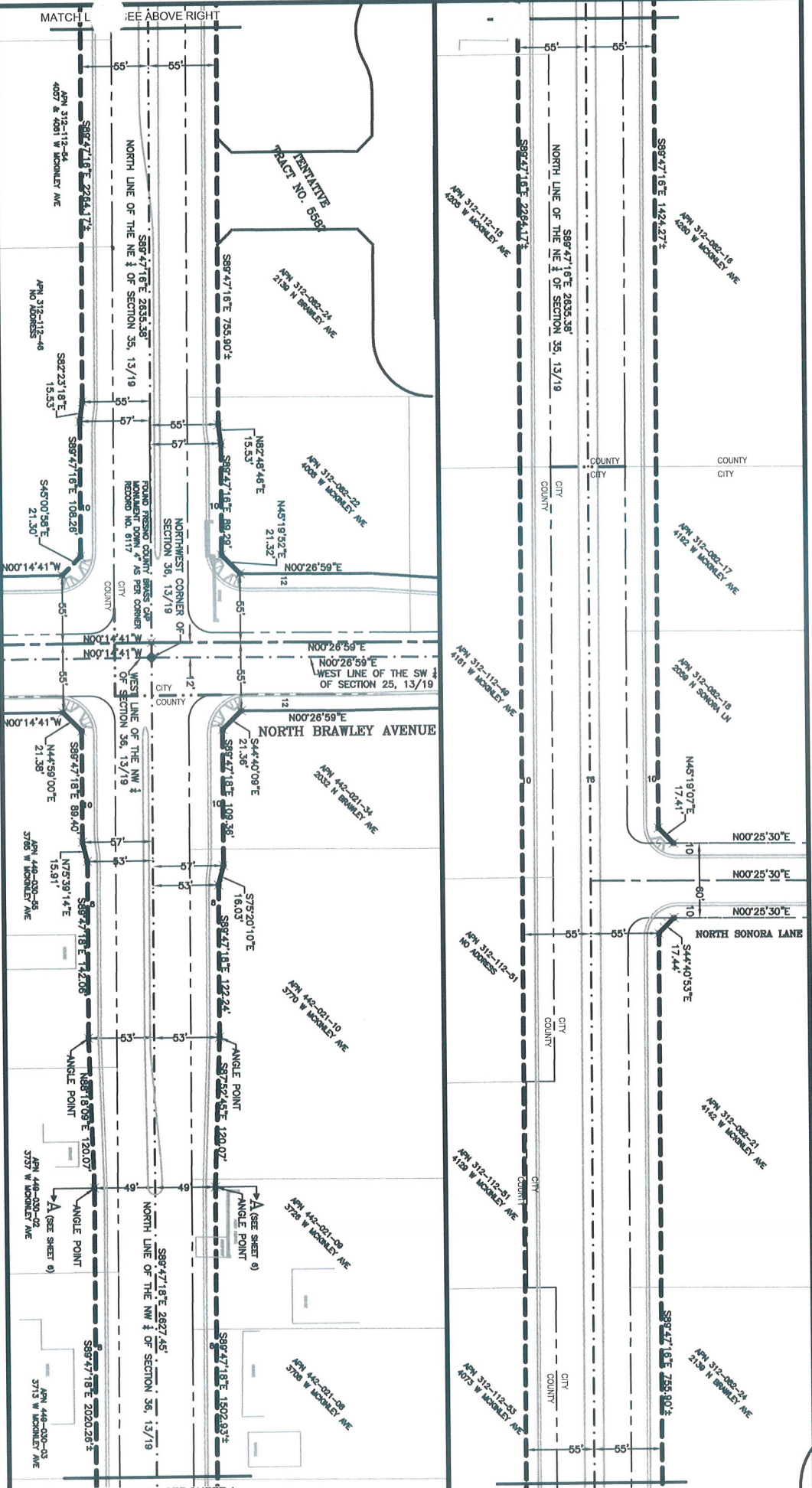
WEST MCKINLEY AVENUE

BETWEEN NORTH BLYTHE AND MARKS AVENUES

- LEGEND**
- PROPOSED OFFICIAL PLAN LINE
 - SECTION LINE
 - PROPOSED CENTER LINE
 - FUTURE RIGHT OF WAY LINE
 - EXISTING RIGHT OF WAY LINE
 - EXISTING PROPERTY LINE
 - FUTURE CURB PATTERN

SHEET NO. 2 OF 6 SHEETS

MATCH LINE - SEE SHEET 3



SCALE: 1" = 50'
 NOTE: ALL SETBACKS SHALL BE MEASURED FROM THE "OFFICIAL PLAN LINES".

OFFICIAL PLAN LINES

WEST MCKINLEY AVENUE

BETWEEN NORTH BLYTHE AND MARKS AVENUES

- LEGEND**
- PROPOSED OFFICIAL PLAN LINE
 - SECTION LINE
 - PROPOSED CENTER LINE
 - FUTURE RIGHT OF WAY LINE
 - EXISTING RIGHT OF WAY LINE
 - EXISTING PROPERTY LINE
 - FUTURE CURB PATTERN

NOTE: ALL SETBACKS SHALL BE MEASURED FROM THE "OFFICIAL PLAN LINES".

SCALE: 1" = 50'

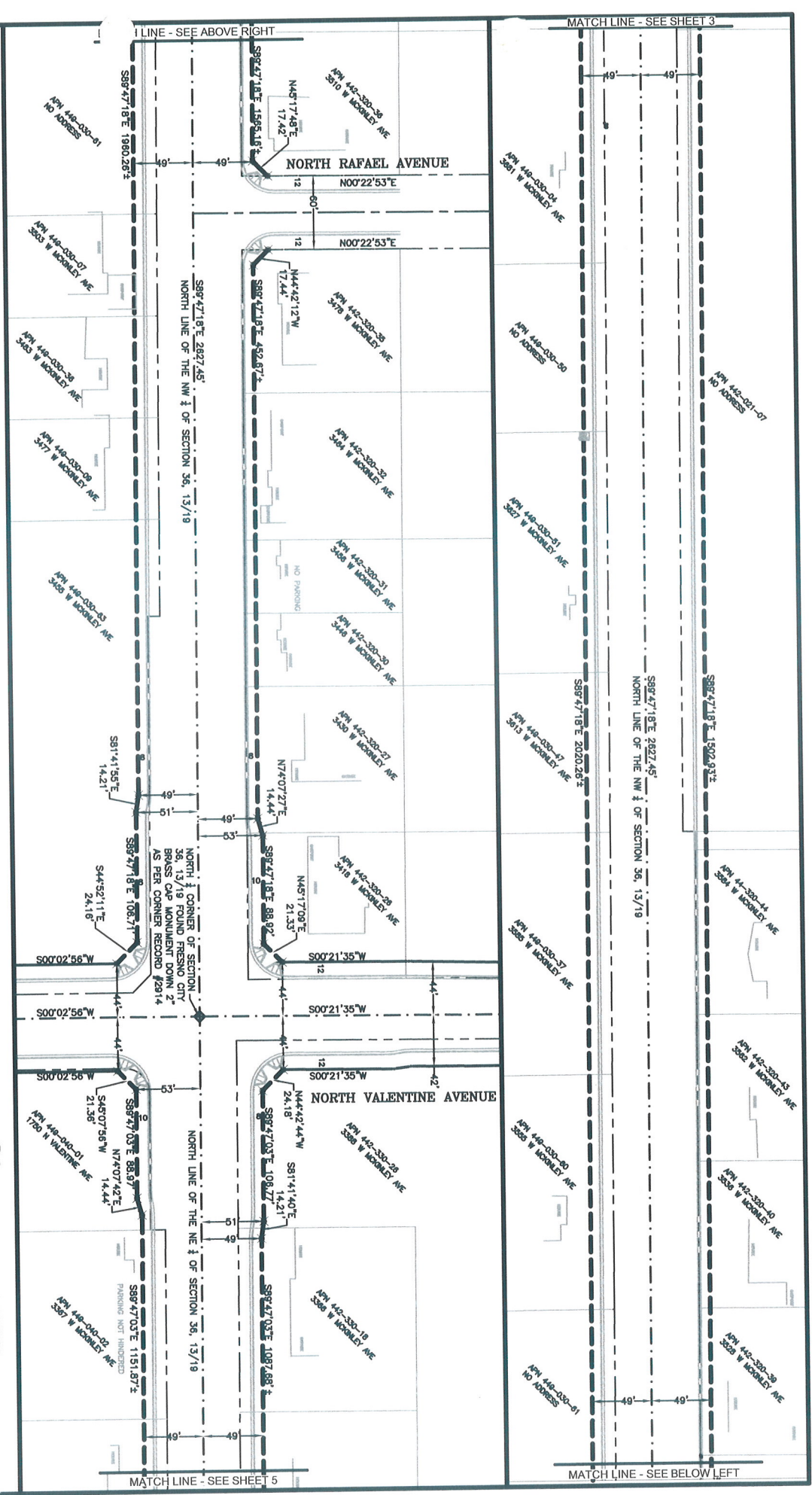
BETWEEN NORTH BLYTHE AND MARKS AVENUES

OFFICIAL PLAN LINES

WEST MCKINLEY AVENUE

- LEGEND**
- PROPOSED OFFICIAL PLAN LINE
 - SECTION LINE
 - PROPOSED CENTER LINE
 - FUTURE RIGHT OF WAY LINE
 - EXISTING RIGHT OF WAY LINE
 - EXISTING PROPERTY LINE
 - FUTURE CURB PATTERN

SHEET NO. 4 OF 6 SHEETS

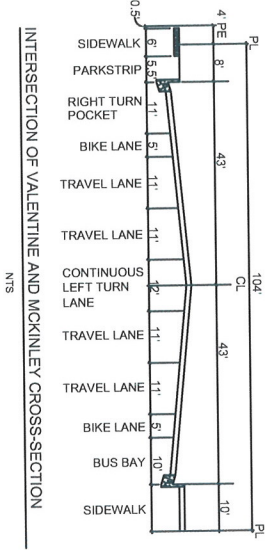
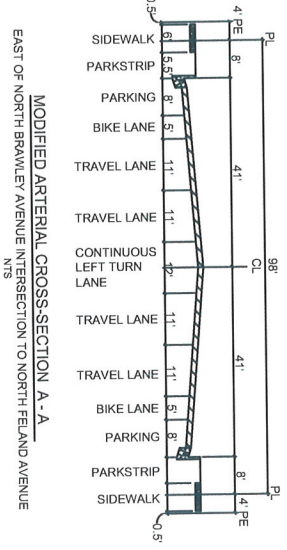
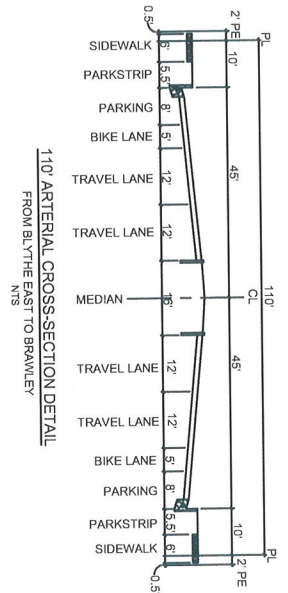
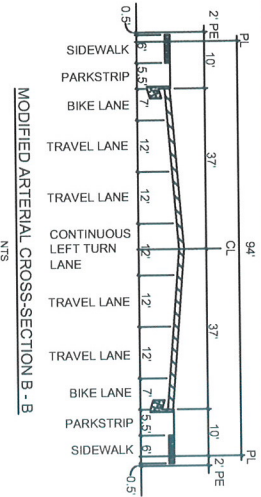
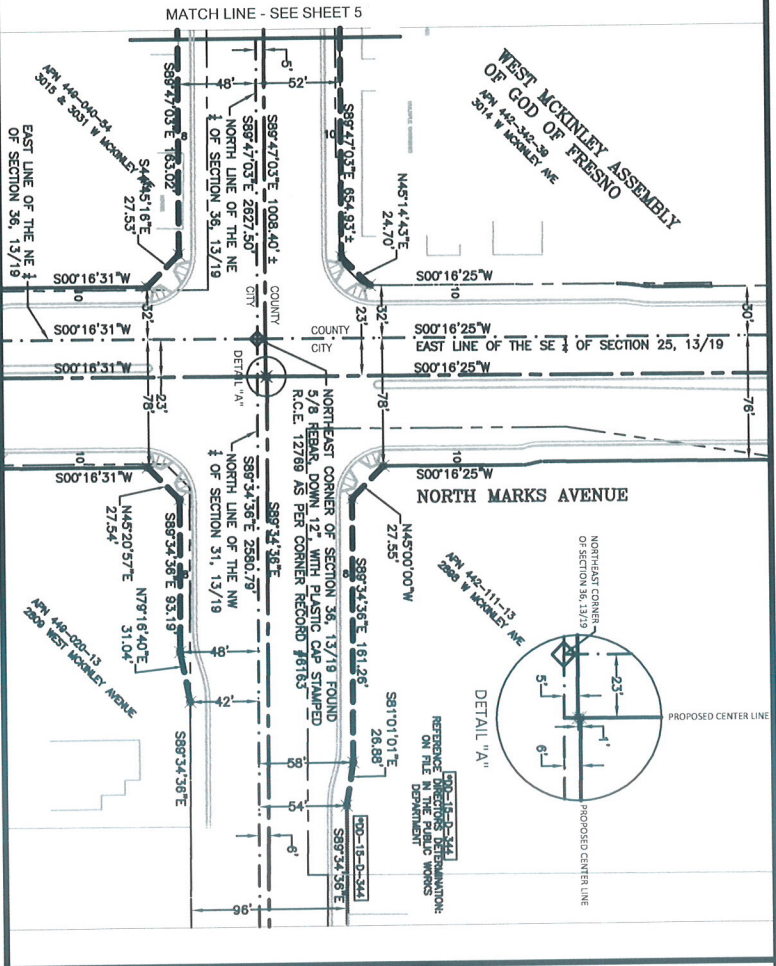


LINE - SEE ABOVE RIGHT

MATCH LINE - SEE SHEET 3

MATCH LINE - SEE SHEET 5

MATCH LINE - SEE BELOW LEFT



SCALE: 1" = 50'

NOTE: ALL SETBACKS SHALL BE MEASURED FROM THE "OFFICIAL PLAN LINES".

OFFICIAL PLAN LINES

WEST MCKINLEY AVENUE

BETWEEN NORTH BLYTHE AND MARKS AVENUES

- LEGEND**
- PROPOSED OFFICIAL PLAN LINE
 - SECTION LINE
 - PROPOSED CENTER LINE
 - FUTURE RIGHT OF WAY LINE
 - EXISTING RIGHT OF WAY LINE
 - EXISTING PROPERTY LINE
 - FUTURE CURB PATTERN