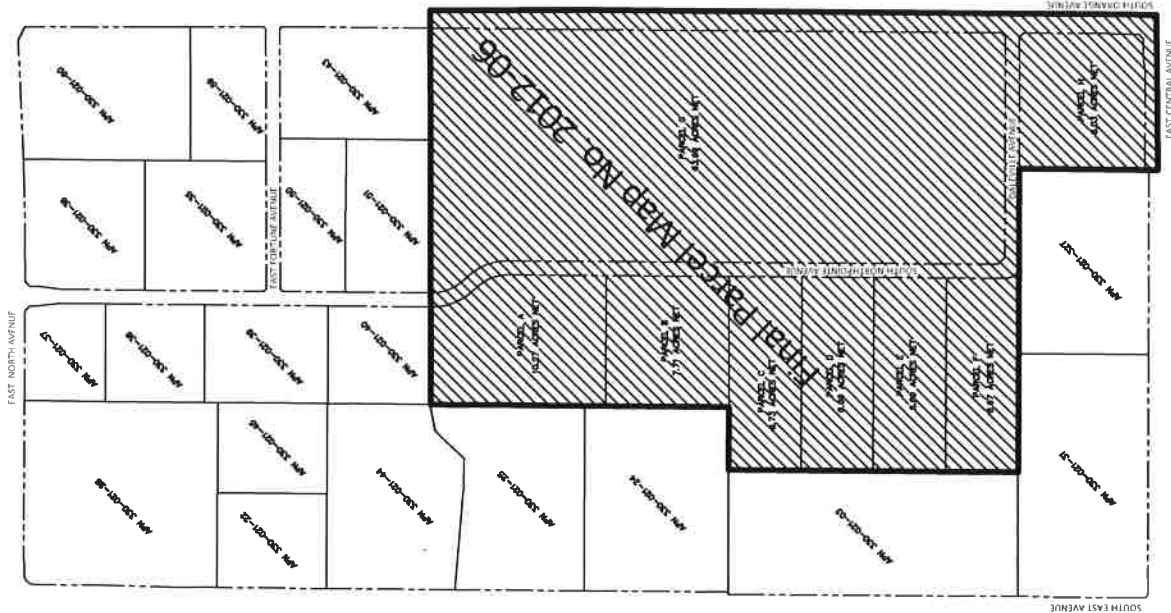


# EXHIBIT B

TERRITORY TO BE ANNEXED TO THE CITY CFD NO. 9

BOUNDARY LINE OF NEW TERRITORY



DOC. \_\_\_\_\_ FILED IN THE OFFICE OF THE CITY CLERK OF THE CITY OF FRESNO THIS \_\_\_\_\_ DAY OF \_\_\_\_\_, 2017.

ATTEST:



YVONNE SPENCE, CMC  
CITY CLERK OF THE CITY OF FRESNO

BY: \_\_\_\_\_  
DEPUTY

I HEREBY CERTIFY THAT THE ANNEXATION MAP NO. 14 OF THE COMMUNITY FACILITIES DISTRICT NO. 9, CITY OF FRESNO, COUNTY OF FRESNO, STATE OF CALIFORNIA WAS ADOPTED BY THE COUNCIL OF THE CITY OF FRESNO BY RESOLUTION NO. 2017-\_\_\_ ON \_\_\_\_\_, 2017.

ATTEST:



YVONNE SPENCE, CMC  
CITY CLERK OF THE CITY OF FRESNO

BY: \_\_\_\_\_  
DEPUTY

THIS ANNEXATION MAP NO. 14 OF THE CITY OF FRESNO COMMUNITY FACILITIES DISTRICT NO. 9, WAS FILED THIS \_\_\_\_\_ DAY OF \_\_\_\_\_, 2017 AT THE HOUR OF \_\_\_\_\_ O'CLOCK \_\_\_\_\_ M AT BOOK 44, PAGE \_\_\_\_\_ OF MAPS OF ASSESSMENT AND COMMUNITY FACILITIES DISTRICTS IN THE OFFICE OF THE COUNTY RECORDER IN THE COUNTY OF FRESNO, STATE OF CALIFORNIA.

PAUL DICTOS, C.P.A.  
COUNTY RECORDER OF THE COUNTY OF FRESNO

BY: \_\_\_\_\_

REFERENCE: BOUNDARY MAP OF CITY OF FRESNO COMMUNITY FACILITIES DISTRICT NO. 9, RECORDED DECEMBER 4, 2008 AT BOOK 42, PAGE 100 OF ASSESSMENT AND COMMUNITY FACILITIES DISTRICTS IN THE OFFICE OF THE RECORDER IN THE COUNTY OF FRESNO, STATE OF CALIFORNIA

NOTE: FOR PARCEL DIMENSIONS, SEE ASSESSOR'S MAP BOOK PAGES

## CITY OF FRESNO - Public Works Department

ANNEXATION MAP NO. 14 OF COMMUNITY FACILITIES DISTRICT NO. 9 OF THE CITY OF FRESNO, FRESNO COUNTY, CALIFORNIA

CITY ENGINEER: \_\_\_\_\_ OFFICE DATE: \_\_\_\_\_  
CITY CLERK: \_\_\_\_\_  
DATE: \_\_\_\_\_  
BOOK: \_\_\_\_\_