

ASSESSOR'S PARCEL NO. 310-250-13

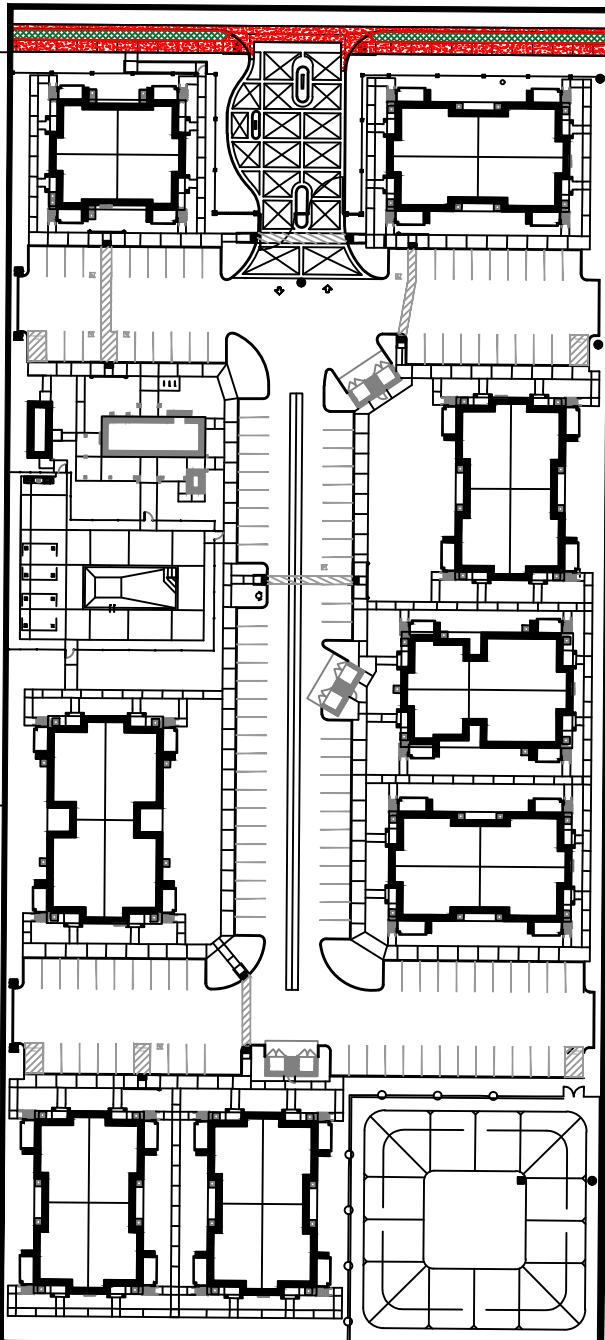


CITY OF
FRESNO
PUBLIC WORKS DEPARTMENT
LAND PLANNING & SUBDIVISION INSPECTION SECTION
FEATURES TO BE ADDED BY ANNEXATION NO. 65
COMMUNITY FACILITIES DISTRICT NO. 9



NOT TO SCALE
December 27, 2024

N ARMSTRONG AVE

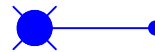


CONCRETE IMPROVEMENTS:



SIDEWALKS & CURB RAMPS = 1,490 SF
VALLEY GUTTER = 644 SF
CURB & GUTTER = 213 LF

STREETLIGHTS:



TOTAL = 1 EACH

LANDSCAPE AND IRRIGATION:



LANDSCAPE AND IRRIGATION WITHIN THE
PUBLIC RIGHT-OF-WAY TO BE PRIVATELY
MAINTAINED BY PROPERTY OWNER