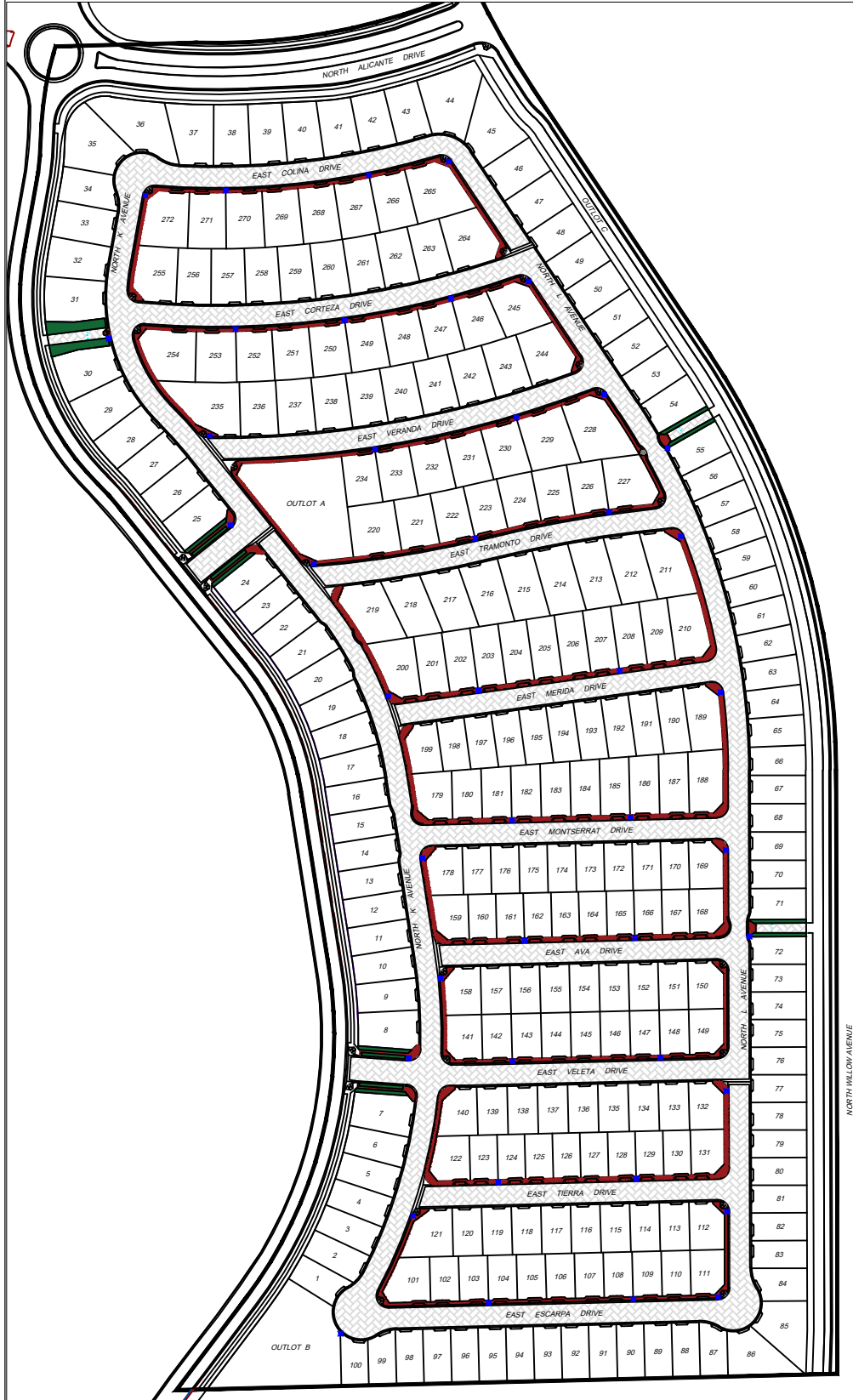
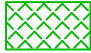
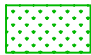


**PUBLIC WORKS DEPARTMENT**  
LAND PLANNING & SUBDIVISION INSPECTION SECTION  
FEATURES TO BE ADDED BY ANNEXATION NO. 147  
COMMUNITY FACILITIES DISTRICT NO. 11


NOT TO SCALE  
September 15, 2023




**LANDSCAPE AND IRRIGATION:**

-  BUFFERS/PARKWAYS/MEDIAN TREES & SHRUBS = 20,200 SF
-  TURF & BEDS GROUND COVER = 15,781 SF
- SMALL TREES = 36 EACH
- LARGE TREES = 34 EACH

**CONCRETE IMPROVEMENTS:**

-  CURB & GUTTER = 18,067 LF
- VALLEY GUTTER = 4,128 SF
- SIDEWALK & CURB RAMPS = 51,670 SF

**LOCAL STREET PAVEMENT:**

-  INTERIOR RESIDENTIAL = 289,120 SF
- TRAIL = 2,205 SF

**OUTLOT HARDSCAPE AND AMENITIES:**

- \*CONCRETE WALKS & PADS = 6,005 SF
- \*PLAY STRUCTURE = 1 EACH
- \*PICNIC TABLES = 9 EACH
- \*BENCHES = 9 EACH
- \*TRASH RECEPTACLES = 4 EACH
- \*BLOCK WALL = 204 LF
- \*SHADE COVERS = 3 EACH
- \*BIKE RACKS = 2 EACH
- \*BOLLARDS = 9 EACH
- \*DECOMPOSED GRANITE = 160 CF
- \*STAMPED CONCRETE = 2,205 SF
- \*CURB = 931 LF

**STREET LIGHTS:**

TOTAL = 43 EACH

