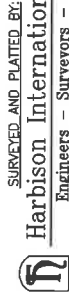




# FINAL MAP OF TRACT NO. 5608

BEING A SUBDIVISION OF THE NW 1/4 OF THE  
NW 1/4 OF SEC 15, T13S, R19E, M.D.B&M.  
A PLANNED UNIT DEVELOPMENT  
IN THE CITY OF FRESNO  
FRESNO COUNTY,  
STATE OF CALIFORNIA



**Harbison International, Inc.**  
Engineers - Surveyors - Planners  
2755 E. Shaw Ave., Suite 101, Fresno, CA 93710, USA  
P.H. (559) 894-7485 FAX (559) 894-7481  
SURVEYED MARCH 10, 2016 SHEET TWO OF FOUR

## LEGEND

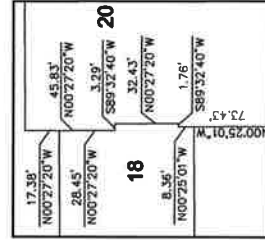
- SECTION CORNER MONUMENT FOUND AND ACCEPTED AS SHOWN
- FOUND AND ACCEPTED AS NOTED
- SET 3/4" x 30" IRON PIPE WITH TAG "ICE 23273", UP 4" IN 6" DIAMETER x 30" P.C.C. MONUMENT DOWN 6"
- ▲ INDICATES EASEMENT NOW OFFERED FOR DEDICATION FOR PUBLIC STREET PURPOSES
- ▲▲▲▲ INDICATES RELINQUISHMENT OF DIRECT VEHICULAR ACCESS.
- CR CORNER RECORD ON FILE WITH THE COUNTY SURVEYOR
- F.C.R. FRESNO COUNTY RECORDS.
- M.D.B.&M. MOUNT DIABLO BASE AND MERIDIAN
- R/W RIGHT-OF-WAY
- APN ASSESSORS PARCEL NUMBER
- PUE PUBLIC UTILITY EASEMENT NOW OFFERED FOR DEDICATION FOR PUBLIC USE
- INDICATES LIMITS OF THIS SUBDIVISION
- CENTER LINE
- PUBLIC UTILITY EASEMENT
- ( ) RECORD DATA PER PARCEL MAP NO. 2785 RECORDED IN BOOK 18 OF PARCEL MAPS, PAGE 50, FRESNO COUNTY RECORDS
- (( )) RECORD DATA PER RECORD OF SURVEY RECORDED IN BOOK 51 OF RECORD OF SURVEYS, PAGE 72, FRESNO COUNTY RECORDS
- [ ] RECORD DATA PER TRACT NO. 5134 RECORDED IN VOLUME 66, PAGES 84-86 OF PLATS, FRESNO COUNTY RECORDS
- [ ] RECORD DATA PER TRACT NO. 4339, RECORDED IN VOLUME 59, PAGES 87-88 OF PLATS, FRESNO COUNTY RECORDS

## NOTE

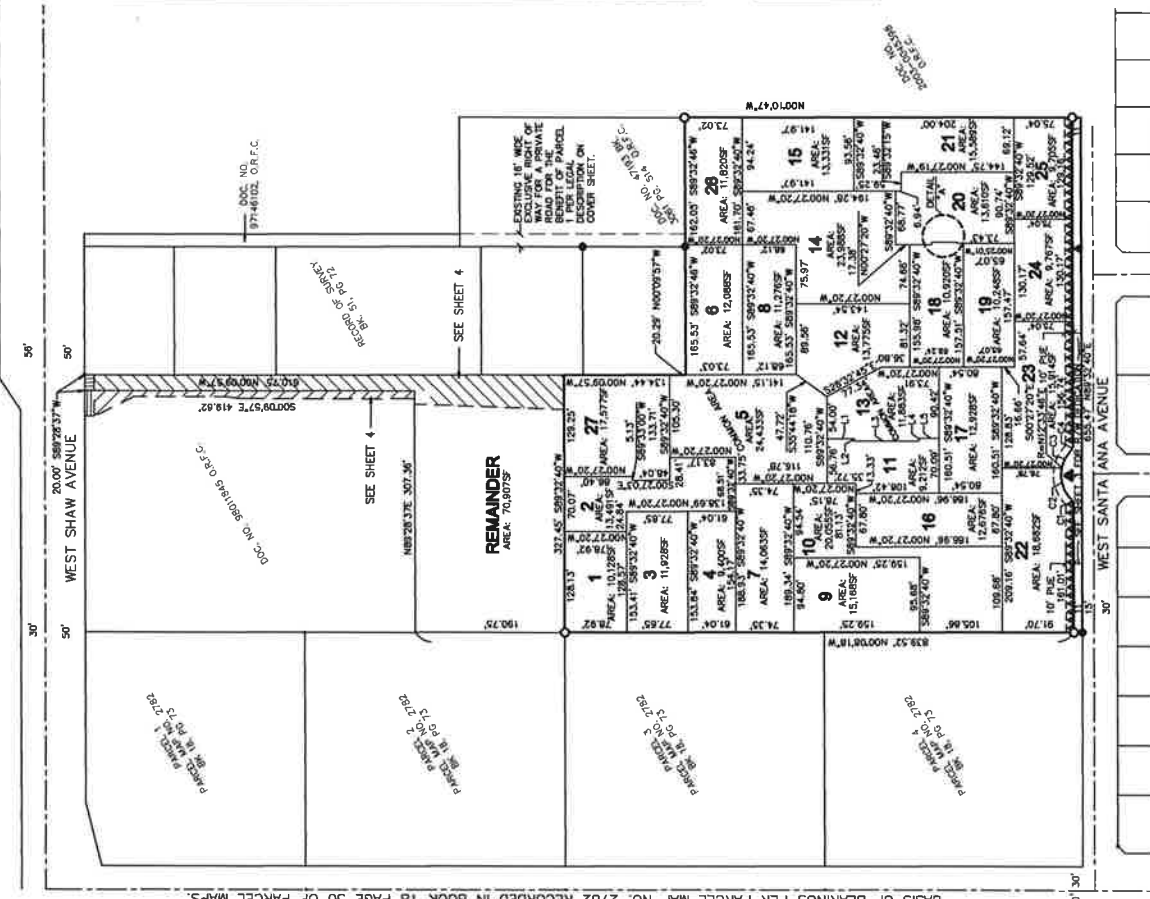
1. LOTS 5 AND 13 ARE FOR COMMON USE, RECREATIONAL FACILITIES AND OPEN SPACE PURPOSES
2. THE REMAINDER SHALL REQUIRE A CERTIFICATE OF COMPLIANCE OR A CONDITIONAL CERTIFICATE OF COMPLIANCE, WHICHEVER APPLIES, PRIOR TO THE SALE, LEASE, OR FINANCING OF THE REMAINDER PARCEL
3. SET 3/4" x 30" IRON PIPE, DOWN 6" WITH TAG "ICE 23273, AT EACH OF CORNERS, ANGLE POINTS AND POINTS OF CURVATURE
4. THE EXISTING ADJACENT STRUCTURE ON LOT 5 IS A PROTECTED HISTORIC PRESERVATION SITE AND IS TO REMAIN
5. DISTANCES NOT MONUMENTED ARE CALCULATED. ALL DISTANCES ARE IN FEET AND DECIMAL THEREOF. ALL BEARINGS SHOWN ARE IN DEGREES, MINUTES & SECONDS

Parcel #	Area
1	10,128 SF
2	13,491 SF
3	11,928 SF
4	9,400 SF
5	24,433 SF
6	12,068 SF
7	14,063 SF
8	11,278 SF
9	15,168 SF
10	20,055 SF
11	9,212 SF
12	11,863 SF
13	13,775 SF
14	23,988 SF
15	13,331 SF
16	12,676 SF
17	12,028 SF
18	10,920 SF
19	10,246 SF
20	13,610 SF
21	15,589 SF
22	16,862 SF
23	15,914 SF
24	9,792 SF
25	9,700 SF
26	11,820 SF
27	17,572 SF
REMAINDER	70,907 SF
STREET DEDICATION	7,955 SF

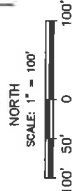
Curve #	Length	Radius	Delta	Chord
C1	10.85'	14.00'	44°24'55"	10.58'
C2	42.10'	42.00'	57°28'01"	40.36'
C3	23.02'	42.00'	31°23'49"	22.73'
C4	10.85'	14.00'	44°24'55"	10.58'



DETAIL "A"  
SCALE: 1" = 40'



BASIS OF BEARING  
CENTERLINE OF NORTH HAVES AVENUE,  
N00°06'35"W PER PARCEL MAP NO. 2782 RECORDED IN BOOK 18 PAGE 50 OF PARCEL MAPS.



# FINAL MAP OF TRACT NO. 5608

BEING A SUBDIVISION OF THE NW 1/4 OF THE NW 1/4 OF SEC 15, T13S, R19E, M.D.B&M. A PLANNED UNIT DEVELOPMENT IN THE CITY OF FRESNO FRESNO COUNTY, STATE OF CALIFORNIA

SURVEYED AND PLATTED BY:



**Harbison International, Inc.**  
 Engineers - Surveyors - Planners  
 2765 E. Shaw Ave., Suite 101, Fresno CA 93710, USA  
 P.H. (559) 284-7465 FAX (559) 284-7481  
 SURVEYED MARCH 10, 2016. SHEET THREE OF FOUR

## LEGEND

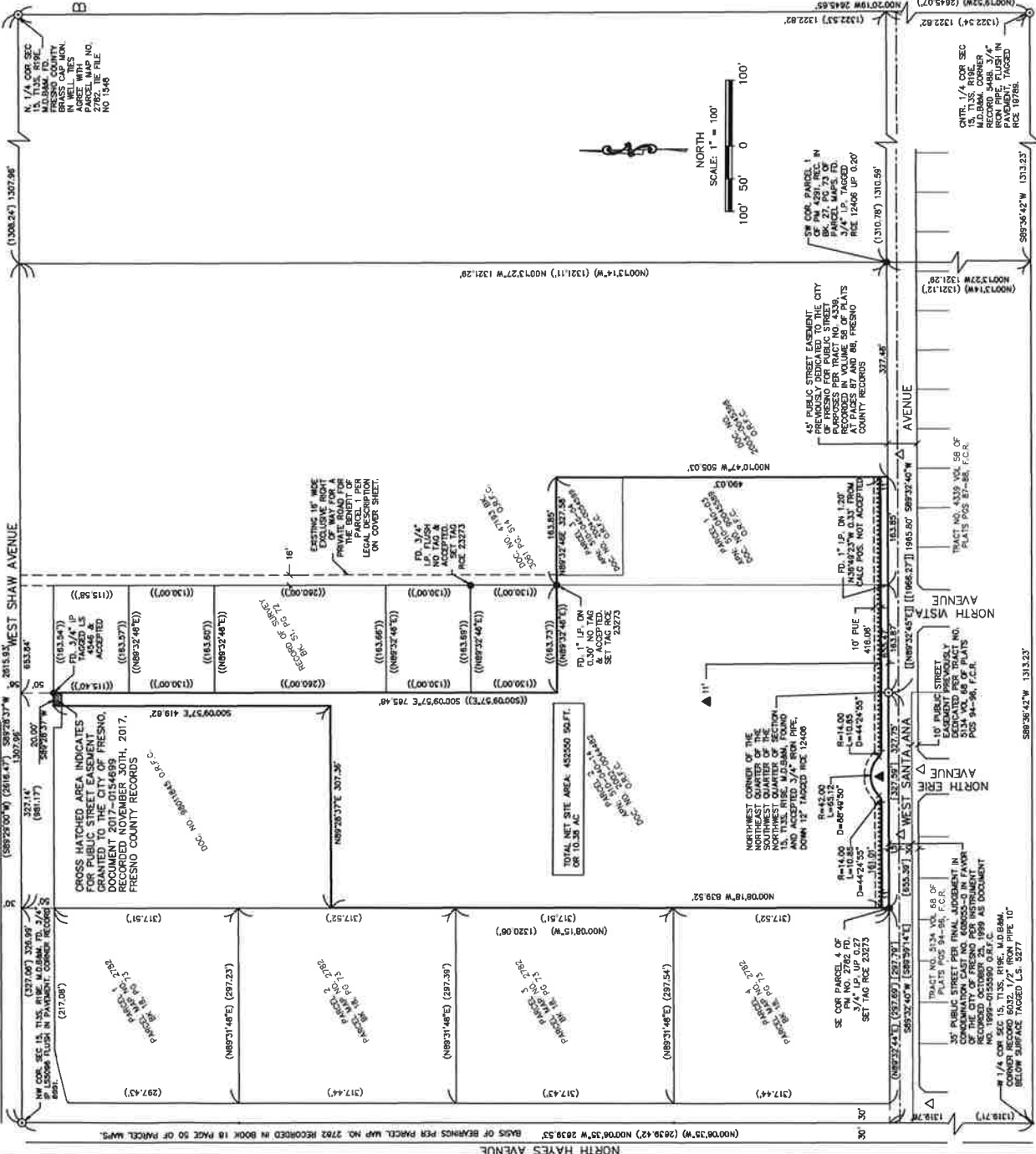
- SECTION CORNER MONUMENT FOUND AND ACCEPTED AS SHOWN FOUND AND ACCEPTED AS NOTED
- SET 3/4" X 30" IRON PIPE WITH TAG "RCE 23273", UP 4" IN 6" DIAMETER x 30" P.C.C. MONUMENT, DOWN 6"
- ▲ INDICATES EASEMENT NOW OFFERED FOR DEDICATION FOR PUBLIC STREET PURPOSES
- ▲▲▲▲ INDICATES RELINQUISHMENT OF DIRECT VEHICULAR ACCESS.
- OR CORNER RECORD ON FILE WITH THE COUNTY SURVEYOR
- F.C.R. FRESNO COUNTY RECORDS.
- M.D.B.&M. MOUNT DIABLO BASE AND MERIDIAN
- P/W RIGHT-OF-WAY
- APN ASSESSORS PARCEL NUMBER
- PUE PUBLIC UTILITY EASEMENT NOW OFFERED FOR DEDICATION FOR PUBLIC USE
- CENTER LINE
- ( ) PUBLIC UTILITY EASEMENT
- ( ( ) RECORD DATA PER PARCEL MAP NO. 2782 RECORDED IN BOOK 18 OF PARCEL MAPS, PAGE 50, FRESNO COUNTY RECORDS
- ( [ ] RECORD DATA PER RECORD OF SURVEY RECORDED IN BOOK 51 OF RECORD OF SURVEYS, PAGE 72, FRESNO COUNTY RECORDS
- [ ] RECORD DATA PER TRACT NO. 5134 RECORDED IN VOLUME 68, PAGES 94-98 OF PLATS, FRESNO COUNTY RECORDS
- [ [ ] RECORD DATA PER TRACT NO. 4339, RECORDED IN VOLUME 58, PAGES 67-68 OF PLATS, FRESNO COUNTY RECORDS

## EASEMENT NOTES

- ⑤ RIGHT OF WAY FOR IRRIGATING CANALS AND BRANCHES AS PROVIDED IN WATER RIGHT AGREEMENT RECORDED MARCH 5, 1903 IN BOOK 44, PAGE 139 OF COVENANTS
- ⑥ A POSE EASEMENT GRANTED TO PACIFIC GAS AND ELECTRIC COMPANY FOR INSTALLATION OF UTILITY LINES AND EQUIPMENT ON AUGUST 23, 1945 IN BOOK 2191, PAGE 247 OF OFFICIAL RECORDS ON BLANKET IN NATURE
- ⑦ A PACIFIC GAS & ELECTRIC EASEMENT AND RIGHT-OF-WAY FOR TRANSMISSION AND DISTRIBUTION OF ELECTRICITY AND INCIDENTAL PURPOSES IN THE DOCUMENT RECORDED AS BOOK 2192, PAGE 87 OF OFFICIAL RECORDS

## BASIS OF BEARING

CENTERLINE OF NORTH HAYES AVENUE, COMMENCING PER PARCEL MAP NO. 2782 RECORDED IN BOOK 18 PAGE 50 OF PARCEL MAPS.



**FINAL MAP OF TRACT  
NO. 5608**

BEING A SUBDIVISION OF THE NW 1/4  
OF THE NW 1/4 OF SEC 15, T13S,  
R19E. M.D.B&M.  
A PLANNED UNIT DEVELOPMENT  
IN THE CITY OF FRESNO  
FRESNO COUNTY,  
STATE OF CALIFORNIA

SURVEYED AND PLATED BY:



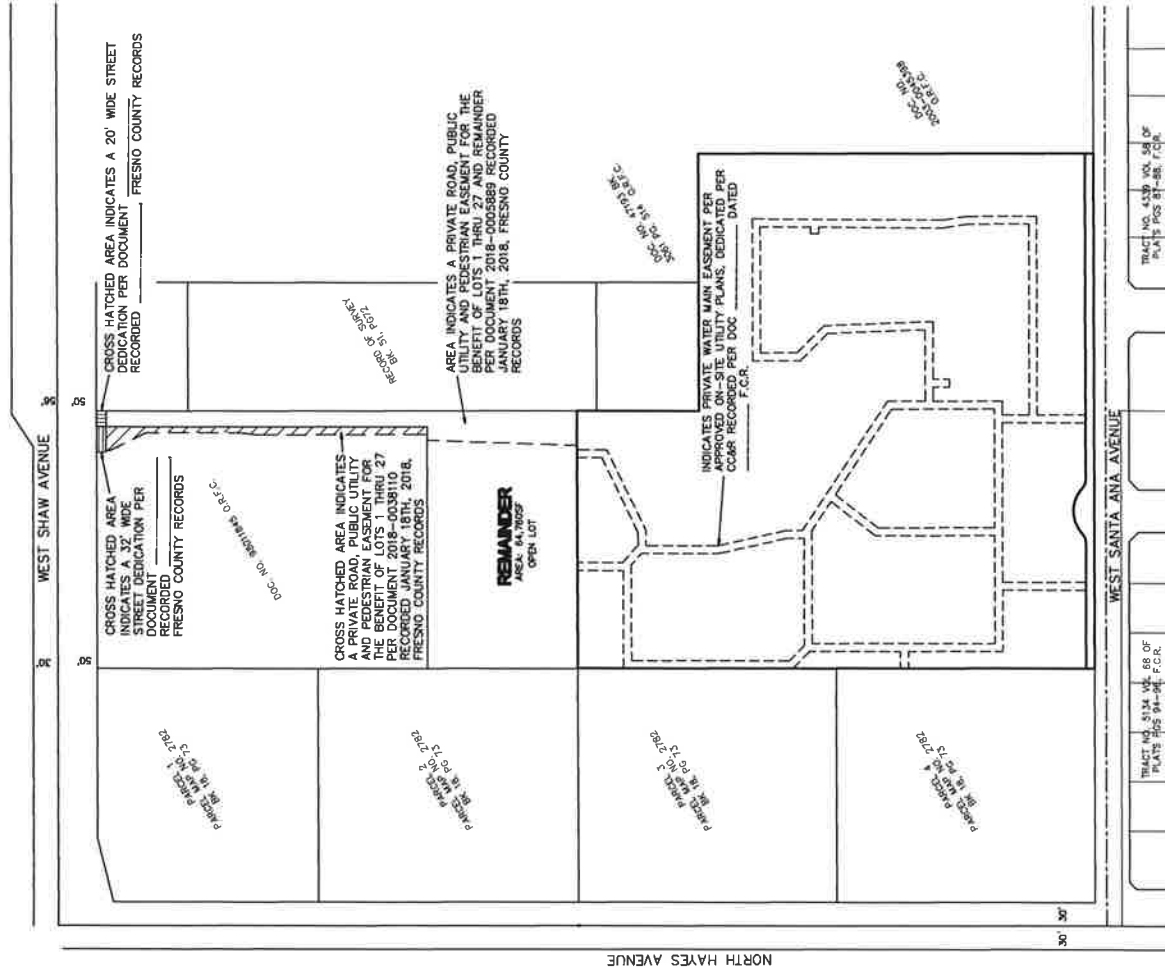
**Harbison International, Inc.**

Engineers - Surveyors - Planners

2766 E. Shaw Ave., Suite 101, Fresno CA 93710, USA

P.H. (509) 294-7466 FAX (509) 294-7467

SURVEYED MARCH 10, 2016. SHEET FOUR OF FOUR



TRACT NO. 5134 VOL. 68 OF PLATS 85-94-96 F.C.R.	TRACT NO. 4339 VOL. 68 OF PLATS 87-88, 708.
---	---