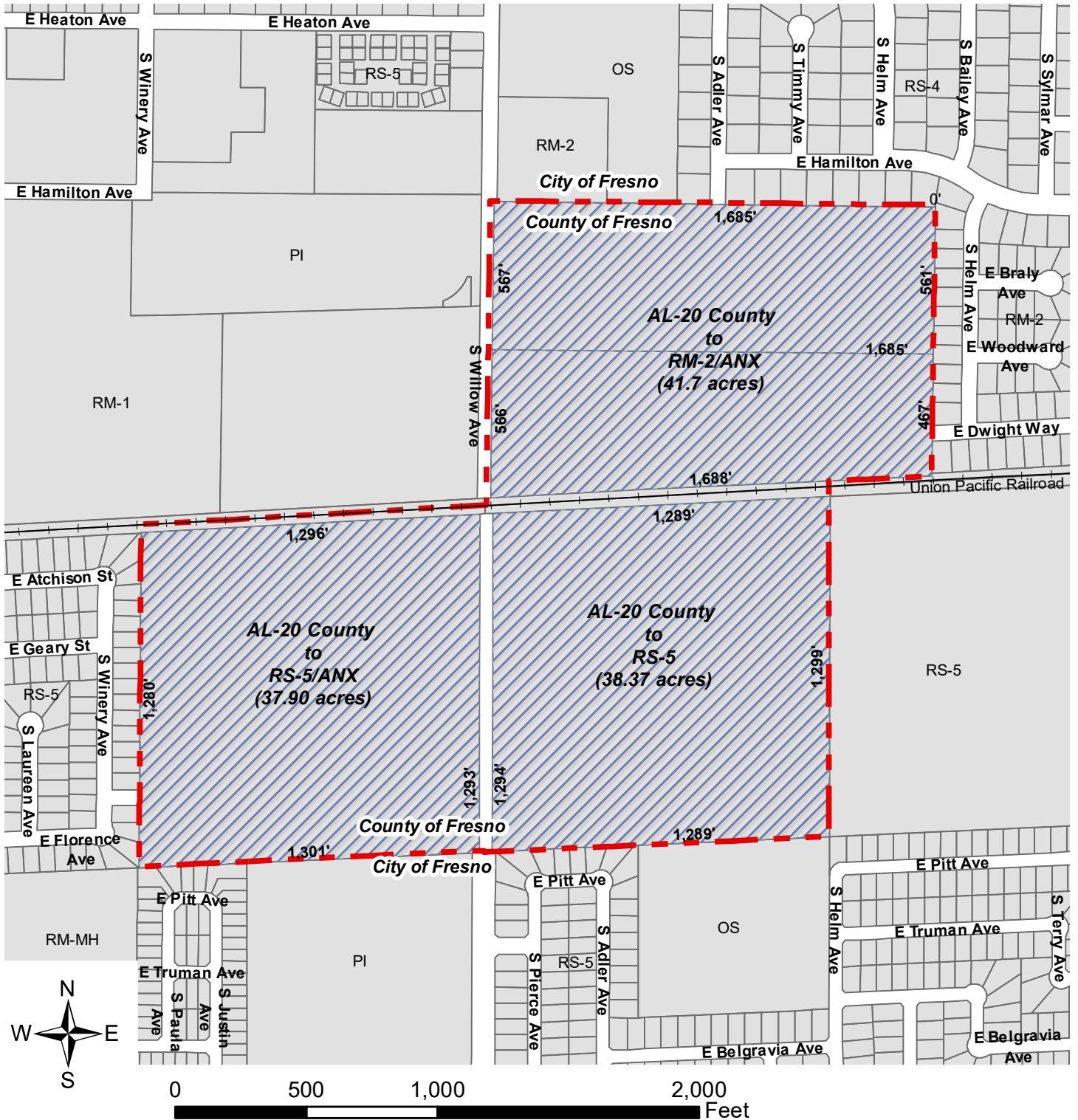


Exhibit F

# EXHIBIT B- Prezone



P22-00442

APN: 481-020-01, 481-060-02S, 473-030-10, 473-030-63 Intersection of Willow Avenue and East California Avenue (alignment)

Prezones 38.37 acres from AL-20 (Limited Agriculture-County) to RS-5 (Residential Single-Family, Medium Density), 37.90 acres from AL-20 (Limited Agriculture-County) to RS-5/ANX (Residential Single-Family, Medium Density/Annexed Rural Residential Transitional Overlay), and 41.7 acres from AL-20 (Limited Agriculture-County) to RM-2/ANX (Residential Multi-Family, Urban Neighborhood/Annexed Rural Residential Transitional Overlay). Proposed area to be annexed into the City of Fresno.