



# TRACT NO. 6079

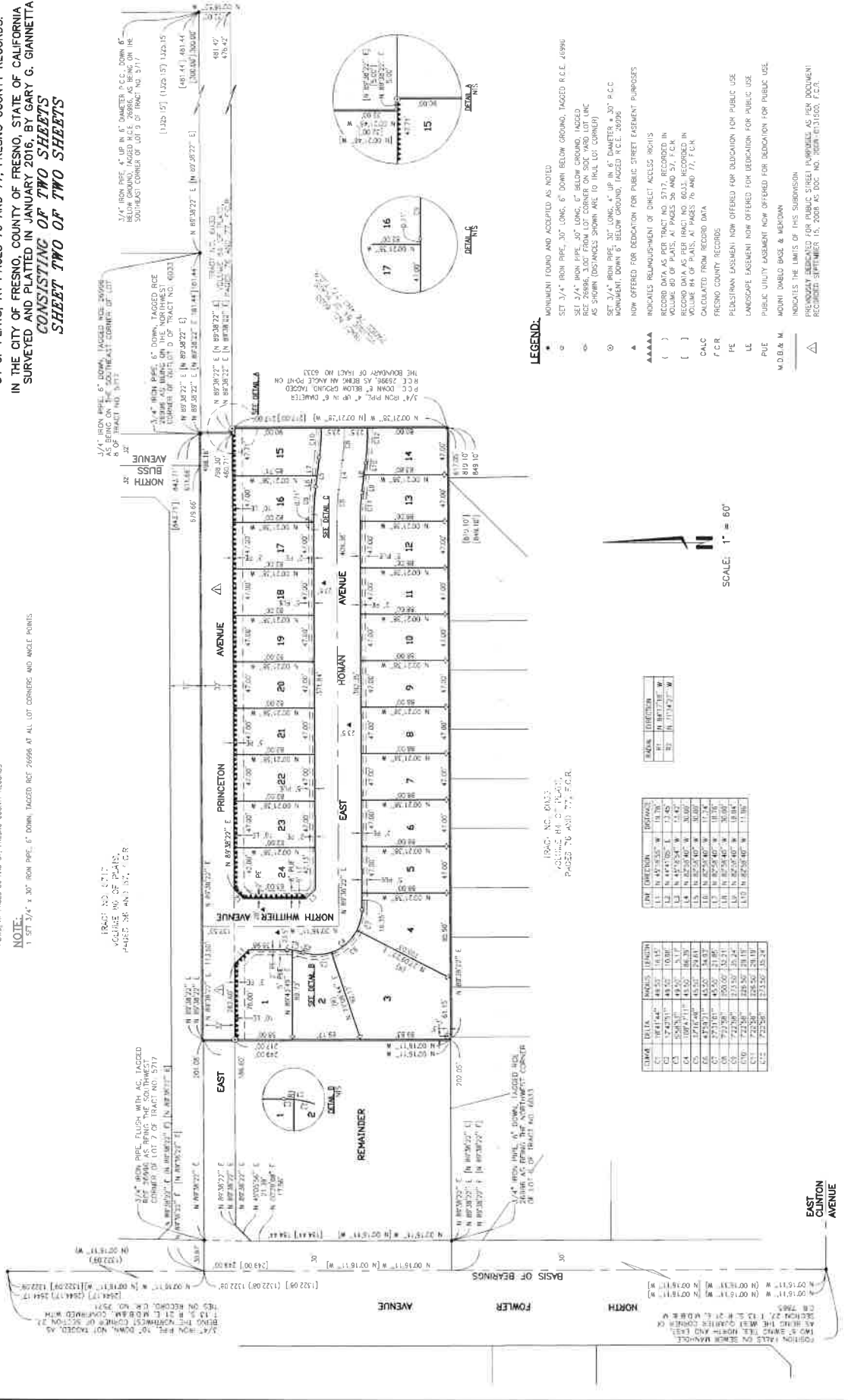
A PLANNED DEVELOPMENT

BEING A SUBDIVISION OF THE REMAINDER OF TRACT 6033, RECORDED IN VOLUME 84 OF PLATS, AT PAGES 76 AND 77, FRESNO COUNTY RECORDS, IN THE CITY OF FRESNO, COUNTY OF FRESNO, STATE OF CALIFORNIA SURVEYED AND PLATTED IN JANUARY 2016, BY GARY G. GIANNETTA CONSISTING OF TWO SHEETS SHEET TWO OF TWO SHEETS

**BASIS OF BEARINGS**  
 THE WEST LINE OF THE NORTHWEST QUARTER OF SECTION 27, TOWNSHIP 13 NORTH 071°18'11" WEST AS PER TRACT NO. 5717 RECORDED IN VOLUME 80 OF PLATS, AT PAGES 55 AND 57, FRESNO COUNTY RECORDS

**NOTE:**

- 1. SET 3/4" x 30" IRON PIPE, 6" DOWN, TAGGED R.C.E. 26996 AT ALL LOT CORNERS AND ANGLE POINTS.
- 2. SET 3/4" x 30" IRON PIPE, 6" DOWN, TAGGED R.C.E. 26996 AT ALL LOT CORNERS AND ANGLE POINTS.
- 3. SET 3/4" x 30" IRON PIPE, 6" DOWN, TAGGED R.C.E. 26996 AT ALL LOT CORNERS AND ANGLE POINTS.
- 4. SET 3/4" x 30" IRON PIPE, 6" DOWN, TAGGED R.C.E. 26996 AT ALL LOT CORNERS AND ANGLE POINTS.
- 5. SET 3/4" x 30" IRON PIPE, 6" DOWN, TAGGED R.C.E. 26996 AT ALL LOT CORNERS AND ANGLE POINTS.
- 6. SET 3/4" x 30" IRON PIPE, 6" DOWN, TAGGED R.C.E. 26996 AT ALL LOT CORNERS AND ANGLE POINTS.
- 7. SET 3/4" x 30" IRON PIPE, 6" DOWN, TAGGED R.C.E. 26996 AT ALL LOT CORNERS AND ANGLE POINTS.
- 8. SET 3/4" x 30" IRON PIPE, 6" DOWN, TAGGED R.C.E. 26996 AT ALL LOT CORNERS AND ANGLE POINTS.
- 9. SET 3/4" x 30" IRON PIPE, 6" DOWN, TAGGED R.C.E. 26996 AT ALL LOT CORNERS AND ANGLE POINTS.
- 10. SET 3/4" x 30" IRON PIPE, 6" DOWN, TAGGED R.C.E. 26996 AT ALL LOT CORNERS AND ANGLE POINTS.
- 11. SET 3/4" x 30" IRON PIPE, 6" DOWN, TAGGED R.C.E. 26996 AT ALL LOT CORNERS AND ANGLE POINTS.
- 12. SET 3/4" x 30" IRON PIPE, 6" DOWN, TAGGED R.C.E. 26996 AT ALL LOT CORNERS AND ANGLE POINTS.
- 13. SET 3/4" x 30" IRON PIPE, 6" DOWN, TAGGED R.C.E. 26996 AT ALL LOT CORNERS AND ANGLE POINTS.
- 14. SET 3/4" x 30" IRON PIPE, 6" DOWN, TAGGED R.C.E. 26996 AT ALL LOT CORNERS AND ANGLE POINTS.
- 15. SET 3/4" x 30" IRON PIPE, 6" DOWN, TAGGED R.C.E. 26996 AT ALL LOT CORNERS AND ANGLE POINTS.
- 16. SET 3/4" x 30" IRON PIPE, 6" DOWN, TAGGED R.C.E. 26996 AT ALL LOT CORNERS AND ANGLE POINTS.
- 17. SET 3/4" x 30" IRON PIPE, 6" DOWN, TAGGED R.C.E. 26996 AT ALL LOT CORNERS AND ANGLE POINTS.
- 18. SET 3/4" x 30" IRON PIPE, 6" DOWN, TAGGED R.C.E. 26996 AT ALL LOT CORNERS AND ANGLE POINTS.
- 19. SET 3/4" x 30" IRON PIPE, 6" DOWN, TAGGED R.C.E. 26996 AT ALL LOT CORNERS AND ANGLE POINTS.
- 20. SET 3/4" x 30" IRON PIPE, 6" DOWN, TAGGED R.C.E. 26996 AT ALL LOT CORNERS AND ANGLE POINTS.
- 21. SET 3/4" x 30" IRON PIPE, 6" DOWN, TAGGED R.C.E. 26996 AT ALL LOT CORNERS AND ANGLE POINTS.
- 22. SET 3/4" x 30" IRON PIPE, 6" DOWN, TAGGED R.C.E. 26996 AT ALL LOT CORNERS AND ANGLE POINTS.
- 23. SET 3/4" x 30" IRON PIPE, 6" DOWN, TAGGED R.C.E. 26996 AT ALL LOT CORNERS AND ANGLE POINTS.
- 24. SET 3/4" x 30" IRON PIPE, 6" DOWN, TAGGED R.C.E. 26996 AT ALL LOT CORNERS AND ANGLE POINTS.



**LEGEND:**

- MONUMENT FOUND AND ACCEPTED AS NOTED
- SET 3/4" IRON PIPE, 30" LONG, 6" DOWN BELOW GROUND, TAGGED R.C.E. 49896
- SET 3/4" IRON PIPE, 30" LONG, 6" DOWN BELOW GROUND, TAGGED R.C.E. 26996, 3.00' FROM LOT CORNER ON SIDE AND LOT LINE AS SHOWN (DISTANCES SHOWN ARE TO IRON LOT CORNER)
- SET 3/4" IRON PIPE, 30" LONG, 4" UP IN 6" DIAMETER x 30" P.C.C. MONUMENT, DOWN 6" BELOW GROUND, TAGGED R.C.E. 26996
- NOW OFFERED FOR DEDICATION FOR PUBLIC STREET EASEMENT PURPOSES
- ROCKETS REINFORCEMENT OF SINKET ACCESS HOLES
- RECORD DATA AS PER TRACT NO. 6033, RECORDED IN VOLUME 84 OF PLATS, AT PAGES 76 AND 77, F.C.R.
- F.C.R. CALCULATED FROM RECORD DATA
- PEDSTRIAN EASEMENT NOW OFFERED FOR DEDICATION FOR PUBLIC USE
- LANDSCAPE EASEMENT NOW OFFERED FOR DEDICATION FOR PUBLIC USE
- PUBLIC UTILITY EASEMENT NOW OFFERED FOR DEDICATION FOR PUBLIC USE
- ADJUT DMBL BASE & MENTION
- INDICATES THE LIMITS OF THIS SUBDIVISION
- PROCESSED FOR PUBLIC STREET EASEMENT, AS PER DOCUMENT RECORDED SEPTEMBER 15, 2009 AS DOC. NO. 2009-0731600, F.C.R.

LINE	BEARING	DISTANCE
1-1	N 47°55' W	18.70'
1-2	N 47°55' W	17.45'
1-3	N 47°55' W	17.45'
1-4	N 47°55' W	17.45'
1-5	N 47°55' W	17.45'
1-6	N 47°55' W	17.45'
1-7	N 47°55' W	17.45'
1-8	N 47°55' W	17.45'
1-9	N 47°55' W	17.45'
1-10	N 47°55' W	17.45'

LINE	BEARING	DISTANCE
1	N 47°55' W	18.70'
2	N 47°55' W	17.45'
3	N 47°55' W	17.45'
4	N 47°55' W	17.45'
5	N 47°55' W	17.45'
6	N 47°55' W	17.45'
7	N 47°55' W	17.45'
8	N 47°55' W	17.45'
9	N 47°55' W	17.45'
10	N 47°55' W	17.45'
11	N 47°55' W	17.45'
12	N 47°55' W	17.45'
13	N 47°55' W	17.45'
14	N 47°55' W	17.45'
15	N 47°55' W	17.45'
16	N 47°55' W	17.45'
17	N 47°55' W	17.45'
18	N 47°55' W	17.45'
19	N 47°55' W	17.45'
20	N 47°55' W	17.45'
21	N 47°55' W	17.45'
22	N 47°55' W	17.45'
23	N 47°55' W	17.45'
24	N 47°55' W	17.45'

EAST AVENUE