



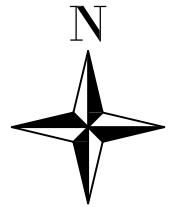
PUBLIC WORKS DEPARTMENT

TRAFFIC AND ENGINEERING SERVICES DIVISION
 FEATURES TO BE ADDED BY ANNEXATION NO. 78

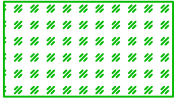
COMMUNITY FACILITIES DISTRICT NO. 11

FINAL TRACT MAP NO. 6090

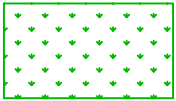
"NO PHASES"



NOT TO SCALE
 February 14, 2017

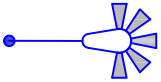


TREES AND SHRUBS
 TOTAL = 41,948 SF



LANDSCAPE AND IRRIGATION:
 OUTLOT A (TURF) = 5,816 SF

SMALL TREES = 48 EA



STREET LIGHTS:
 TOTAL = 19 EACH



INTERIOR PAVEMENT:
 TOTAL AREA = 88,785 SF



CONCRETE IMPROVEMENTS:
 CURB & GUTTER = 5,661 LF
 VALLEY GUTTER = 1,969 SF
 SIDEWALK & CURB RAMPS = 19,132 SF
 CURB ONLY = 396 LF
 EVA STAMPED CONCRETE = 364 LF

OUTLOT A

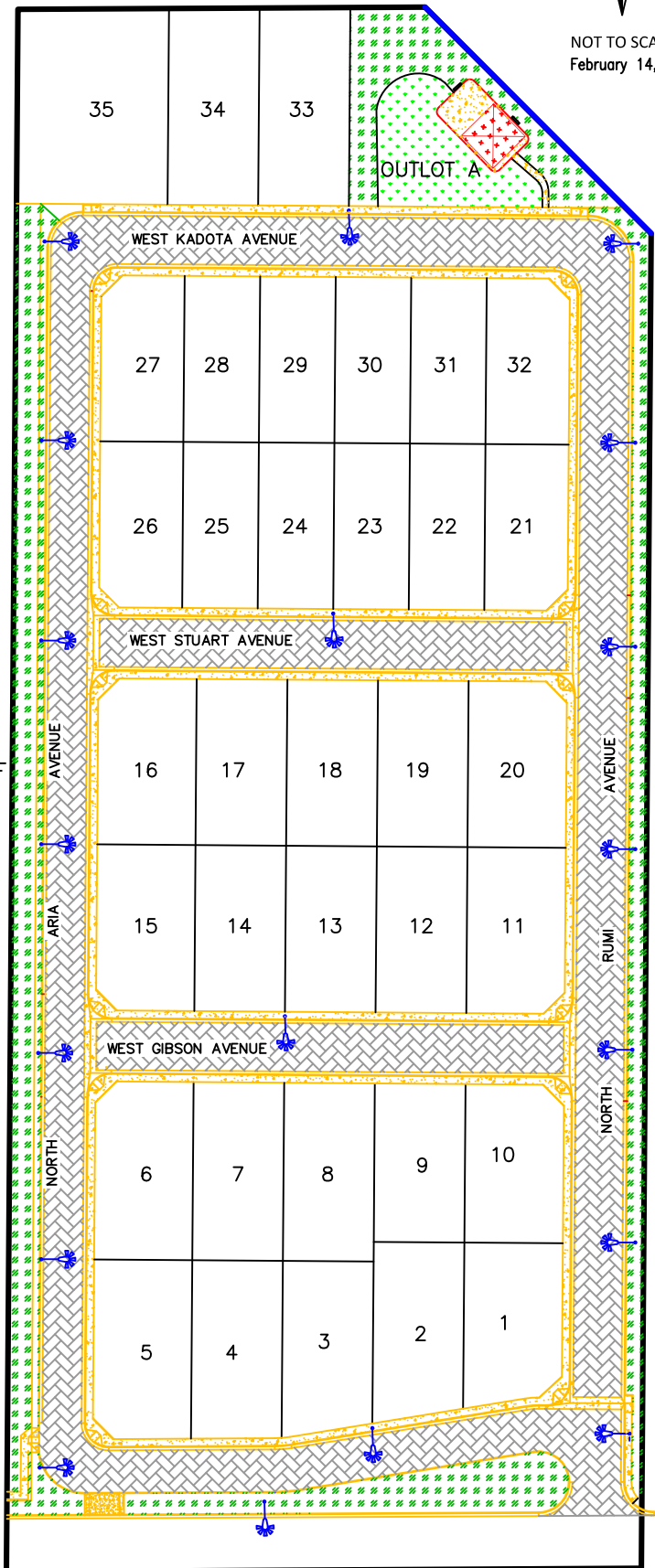
PLAY EQUIPMENT = 1 EA
 BENCHES = 2 EA
 SIDEWALK AND PADS = 1,188 LF
 SHADE/SAIL STRUCTURE = 1 EA
 SWING SET DUAL = 1 EA



SAFETY SURFACE = 904 SF



SOUND WALL = 212 LF



WEST BULLARD AVENUE