

CITY OF



PUBLIC WORKS DEPARTMENT

TRAFFIC AND ENGINEERING SERVICES DIVISION

FINAL TRACT MAP NO. 6033, PHASE I OF 3

*SEE DETAILS FOR OUTLOT A - SHEET 2 OF 2



NOT TO SCALE
October 13, 2014



LANDSCAPE AND IRRIGATION:
TOTAL TREES AND SHRUBS = 30,053 SF
*FOWLER HAS TRAIL



FOWLER MEDIAN = 2,496 SF
LARGE TREES = 65 EA
SMALL TREES = 74 EA
*INCLUDES PARK TREES



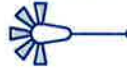
INTERIOR PAVEMENT:
TOTAL AREA = 139,000 SF



CONCRETE IMPROVEMENTS:
CURB & GUTTER = 9,824 LF
VALLEY GUTTER = 2,376 SF



SIDEWALK & CURB RAMPS = 57,712 SF
ENTRANCE MEDIAN CURB (2) = 468 LF

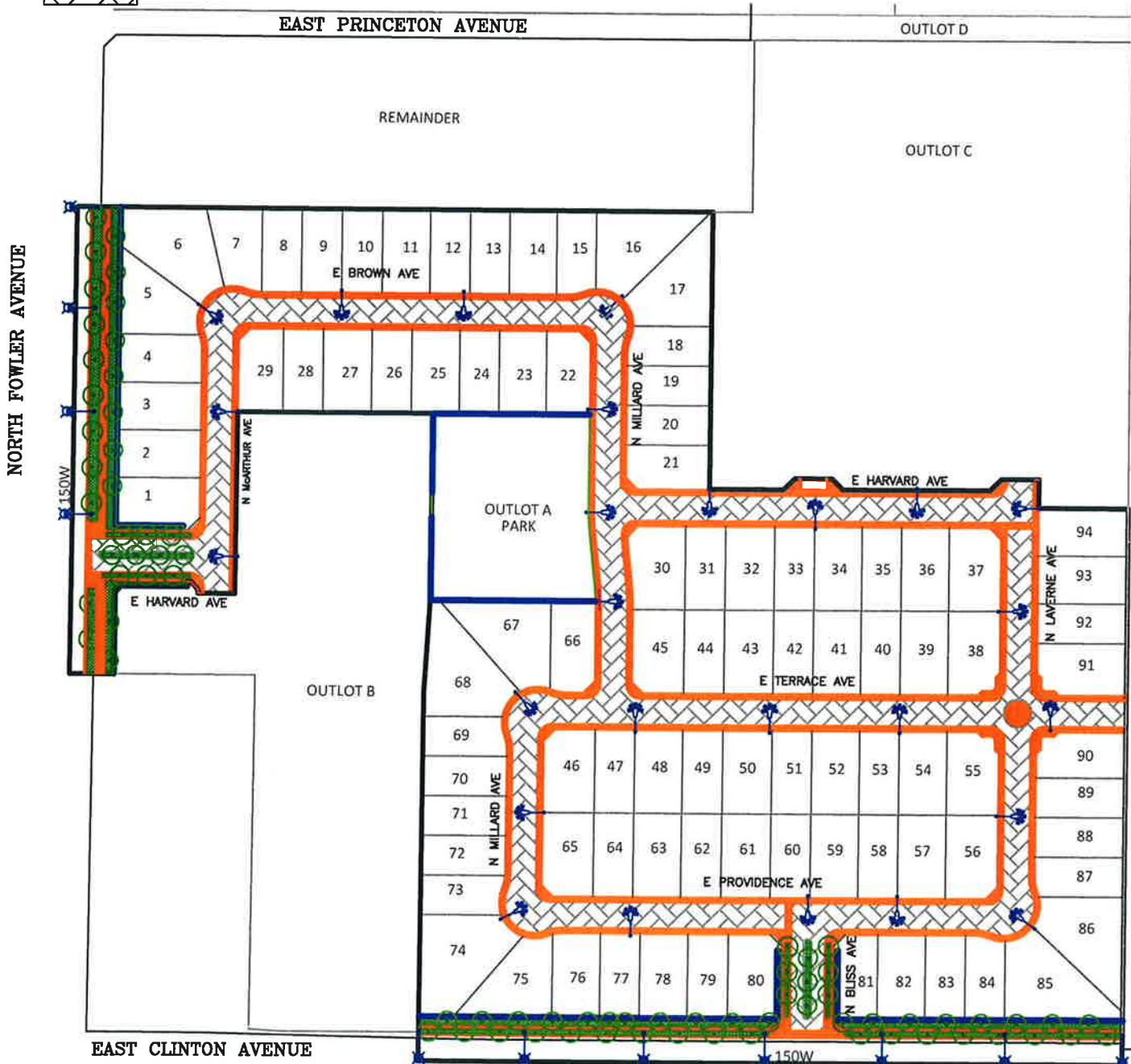


TRAFFIC CIRCLE = 1 EACH

DECORATIVE STREET LIGHTS = 26 (70W)



STANDARD STREET LIGHTS = 9 (70W), 2 (150W)





NOT TO SCALE
October 13, 2014

 LANDSCAPE AND IRRIGATION:
TOTAL TURF AND BEDS = 40,553 SF

BLOCK WALL = 610 LF
DECORATIVE LIGHT = 1 EACH

 CONCRETE IMPROVEMENTS:
SIDEWALKS & PADS = 5,365 SF

PARK AMENITIES

- Play Equipment
- Dual Swing Set
- Soft Fall Safety Surface
- 24'X24' Shade/Sail Structure
- 30'X30' Shade/Sail Structure
- Picnic Tables
- Park Benches
- Trash Receptacles
- Dog Station
- Outdoor Grills

DETAILS FOR OUTLOT A - PARK

