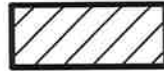


# EXHIBIT B



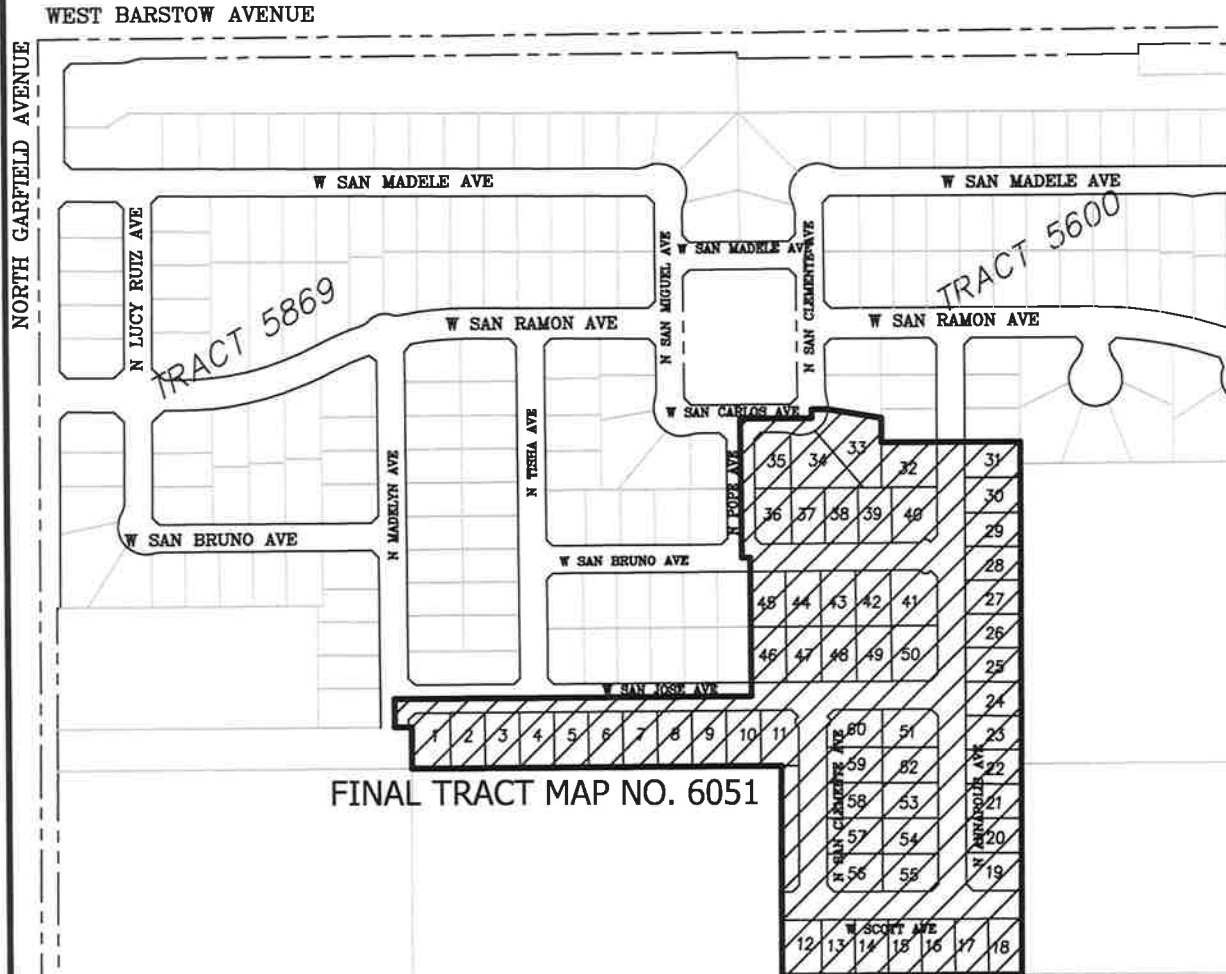
TERRITORY TO BE ANNEXED TO THE CITY CFD NO. 11



BOUNDARY LINE OF NEW TERRITORY



NOT TO SCALE



FINAL TRACT MAP NO. 6051

DOC. \_\_\_\_\_

FILED IN THE OFFICE OF THE CITY CLERK OF THE CITY OF FRESNO THIS \_\_\_\_\_ DAY OF \_\_\_\_\_, 2014.

ATTEST:

YVONNE SPENCE, CMC  
CITY CLERK OF THE CITY OF FRESNO



BY: \_\_\_\_\_  
DEPUTY

I HEREBY CERTIFY THAT THE ANNEXATION MAP NO. 59 OF THE COMMUNITY FACILITIES DISTRICT NO. 11, CITY OF FRESNO, COUNTY OF FRESNO, STATE OF CALIFORNIA WAS ADOPTED BY THE COUNCIL OF THE CITY OF FRESNO BY RESOLUTION NO. 2014-\_\_\_\_ ON \_\_\_\_\_, 2014.

ATTEST:

YVONNE SPENCE, CMC  
CITY CLERK OF THE CITY OF FRESNO



BY: \_\_\_\_\_  
DEPUTY

THIS ANNEXATION MAP NO. 59 OF THE CITY OF FRESNO COMMUNITY FACILITIES DISTRICT NO. 11, WAS FILED THIS \_\_\_\_\_ DAY OF \_\_\_\_\_, 2014 AT THE HOUR OF \_\_\_\_\_ O'CLOCK \_\_\_\_M AT BOOK 44, PAGE \_\_\_\_ OF MAPS OF ASSESSMENT AND COMMUNITY FACILITIES DISTRICTS IN THE OFFICE OF THE COUNTY RECORDER IN THE COUNTY OF FRESNO, STATE OF CALIFORNIA

PAUL DICTOS, C.P.A.  
COUNTY RECORDER OF THE COUNTY OF FRESNO

BY: \_\_\_\_\_

REFERENCE: BOUNDARY MAP OF CITY OF FRESNO COMMUNITY FACILITIES DISTRICT NO. 11, RECORDED NOVEMBER 8, 2005 AT BOOK 41, PAGE 61 OF ASSESSMENT AND COMMUNITY FACILITIES DISTRICTS IN THE OFFICE OF THE RECORDER IN THE COUNTY OF FRESNO, STATE OF CALIFORNIA

NOTE: FOR PARCEL DIMENSIONS, SEE ASSESSOR'S MAP BOOK PAGES

<b>CITY OF FRESNO - Public Works Department</b>	
PREPARED BY: _____ CHECKED BY: _____ DATE: _____	CONST. ENGR. _____ OFFICE ENGR. _____ CITY ENGR. _____ DR. BY: A.Lillie CH. BY: _____ DATE: October 14, 2014 SCALE: _____
ANNEXATION MAP NO. 59 OF COMMUNITY FACILITIES DISTRICT NO. 11 OF THE CITY OF FRESNO, FRESNO COUNTY, CALIFORNIA	
SHEET NO. 1 OF 1 SHEETS	