

Merchants Metals
the first name in fence solutions

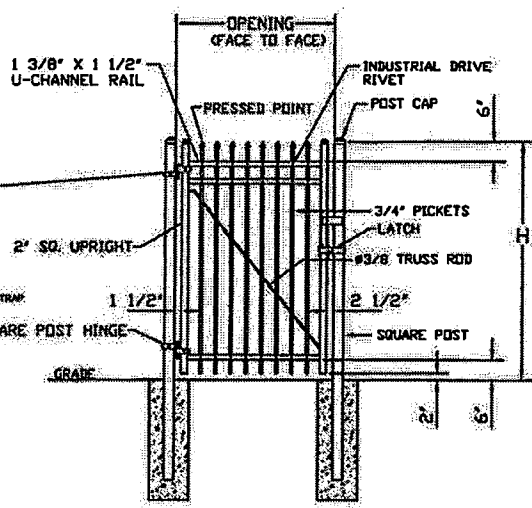
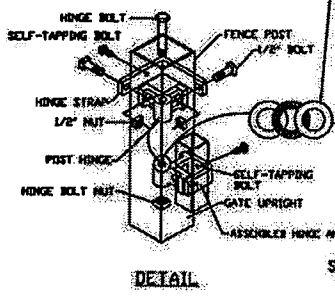
COPYRIGHT © 2006 MERCHANTS METALS
ALL RIGHTS RESERVED

LAFAYETTE STYLE 3 RAIL
8" SECTION 3/4" PICKET
(Nom.Dimension)

BY: ART
DATE: 05/18/06
REV: A

DWG. NO. SDM-0103
SCALE: 1/2" = 1'-0"

(1) NEEDLE-ROLLER BEARING BETWEEN (2) WASHERS, BETWEEN EACH GATE HINGE, (2) SETS PER GATE LEAF.



GATE ELEVATION

ROW HEIGHT (H)
3'-0" [914MM]
3'-6" [1067MM]
4'-0" [1219MM]
5'-0" [1524MM]
6'-0" [1829MM]
7'-0" [2134MM]
8'-0" [2438MM]



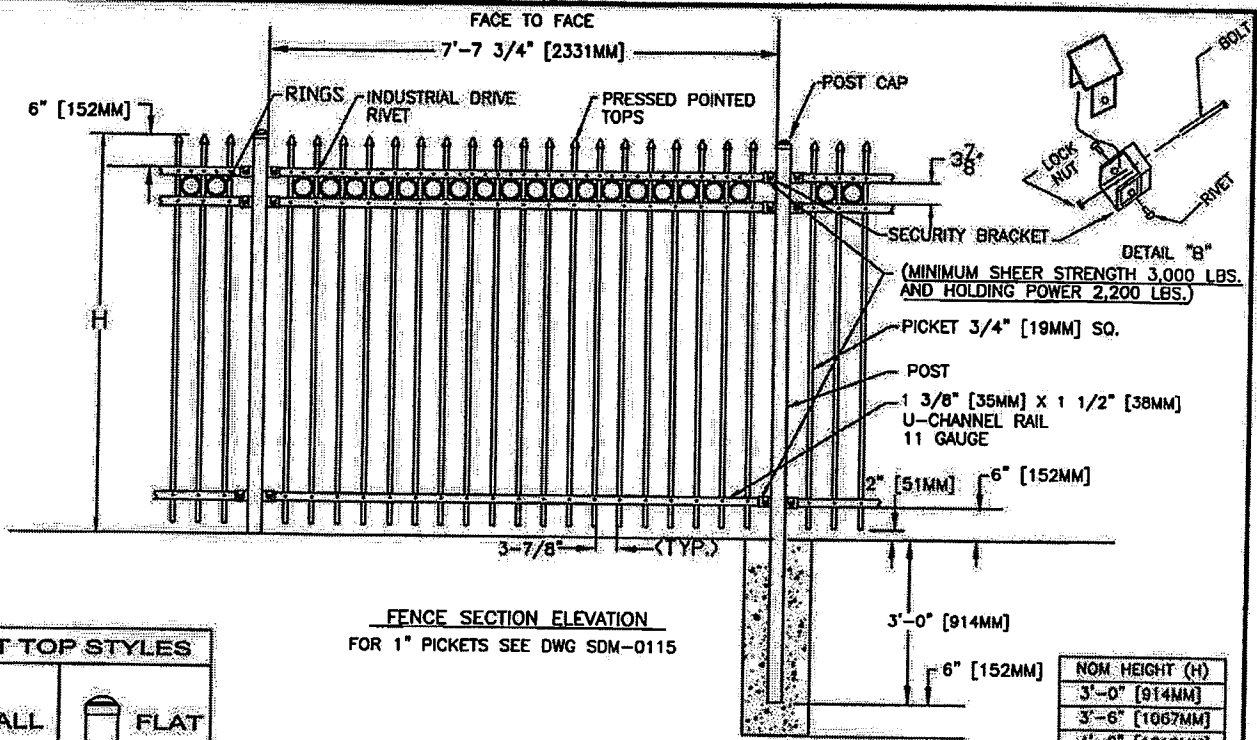
NOTES:
 1. SPECIFICATIONS SHOWN CAN BE CHANGED BY THE MANUFACTURER ONLY.
 2. FOOTING WIDTH TO BE (4)X POST WIDTH.



LAFAYETTE SINGLE SWING GATE
 3 RAILS, STRAIGHT TOP
 3' TO 8' OPENING

BY: FJR
 DATE: 05/04/06
 REV: A

DWG. NO. SDM-1002A
 SCALE: 1/40



FENCE SECTION ELEVATION
FOR 1" PICKETS SEE DWG SDM-0115

NOM. HEIGHT (H)
3'-0" [914MM]
3'-6" [1067MM]
4'-0" [1219MM]
5'-0" [1524MM]
6'-0" [1829MM]
7'-0" [2134MM]
8'-0" [2438MM]

- NOTES:
- SPECIFICATIONS SHOWN CAN BE CHANGED BY THE MANUFACTURER ONLY.
 - FOOTING WIDTH TO BE (4)X POST WIDTH.

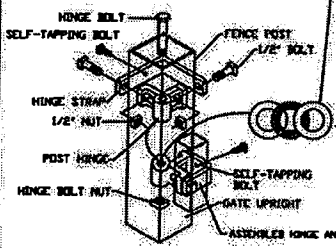


LAFAYETTE STYLE 3 RAIL
WITH ONE ROW OF RINGS
8' SECTION 3/4" PICKET
(Nom. Dimension)

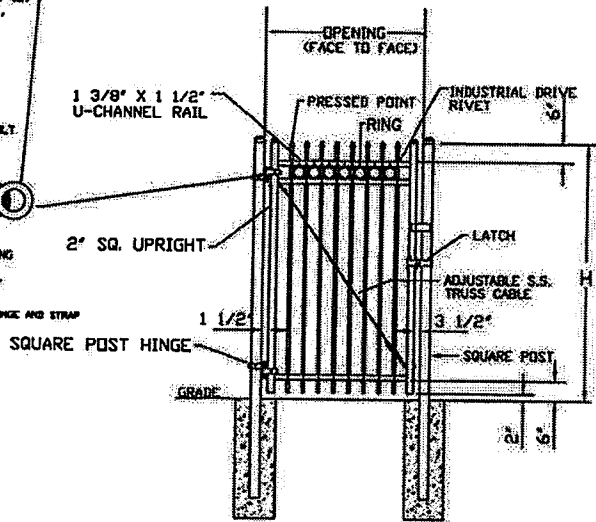
BY: ART
DATE: 05/18/06
REV: A

DWG. NO. SDM-0105
SCALE: 1/2" = 1'-0"

(1) NEEDLE-ROLLER BEARING BETWEEN (2) WASHERS, BETWEEN EACH GATE HINGE, (2) SETS PER GATE LEAF.



DETAIL



GATE ELEVATION



NOTES:

1. SPECIFICATIONS SHOWN CAN BE CHANGED BY THE MANUFACTURER ONLY.
2. FOOTING WIDTH TO BE (4)X POST WIDTH.

POST HEIGHT (H)	
3'-0"	(914MM)
3'-6"	(1067MM)
4'-0"	(1219MM)
5'-0"	(1524MM)
6'-0"	(1829MM)
7'-0"	(2134MM)
8'-0"	(2438MM)



COPYRIGHT © 2006, MERCHANTS METALS
ALL RIGHTS RESERVED

Merchants Metals[®]
the first name in fence solutions

LAFAYETTE SINGLE SWING GATE WITH RINGS

3 RAILS, STRAIGHT TOP
4'-7" TO 8' OPENING

BY: ART

DATE: 07/18/11

REV: A

DWG. NO.

SDM-2102A

SCALE:

1:40