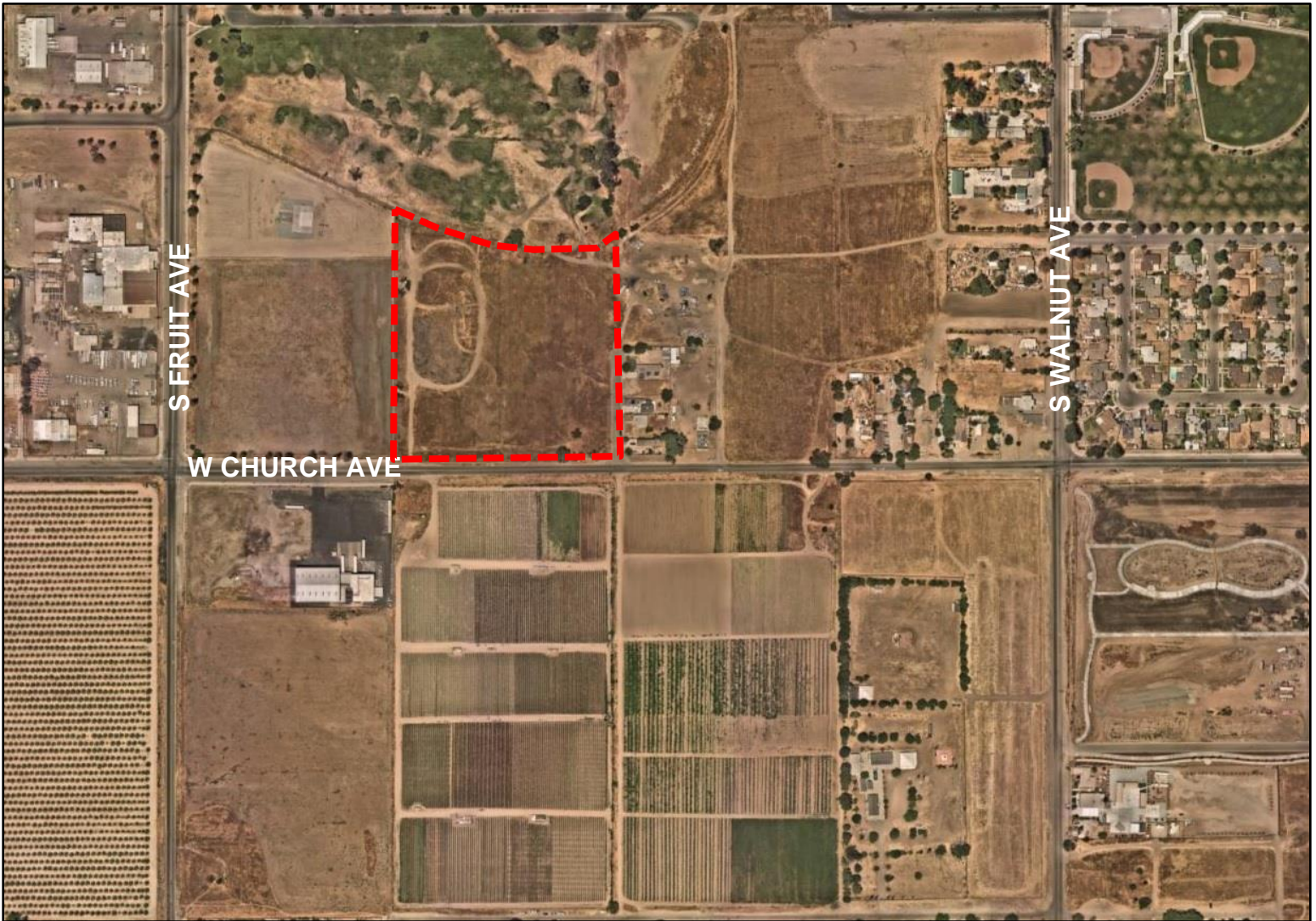


## Exhibit C

# AERIAL MAP



## PLANNING AND DEVELOPMENT DEPARTMENT

### Applications

Tentative Tract Map No. 6411

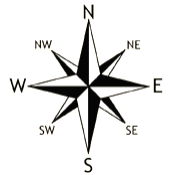
### Zone District

RS-5 (*Single-Family Residential, Medium Density*)



### LEGEND

T-6411  
±7.95 acres



### Location:

Northwest corner of West Church  
and South Thorne Avenues  
(APNs: 477-060-05 & 477-060-06)

### Land Use Designation

Medium Density Residential