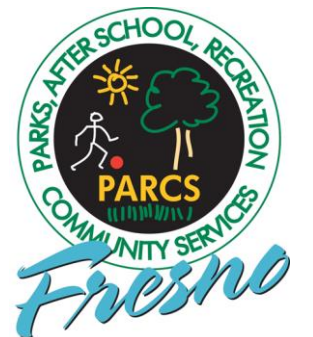


Pocket Parks in the City of Fresno

Workshop - On the park
classification of a pocket park
as defined in the Parks Master
Plan and the number of City of
Fresno pocket parks

February 27, 2023



Overview

Parks Master Plan Description:

Size: Under 2 acres

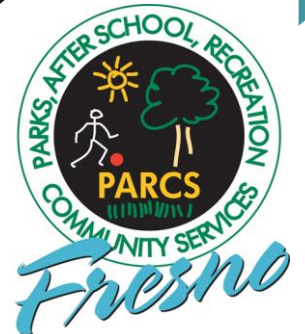
Serving Radius: ¼ mile

Park Access:

- Physically and visually accessible to the surrounding neighborhood, linked to neighborhood with sidewalk, path or trail
- Vehicular access and parking not required

Function:

- Small, comfortable, open, and inviting social spaces
- Efficient use of space to maximize amenities offered
- Designed to allow people to engage in active or passive activity



Overview

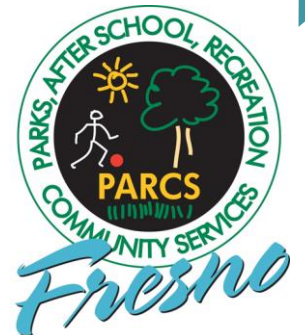
Measure P:

(1) Improving and Maintaining Safe, Clean Neighborhood Parks and Playgrounds.

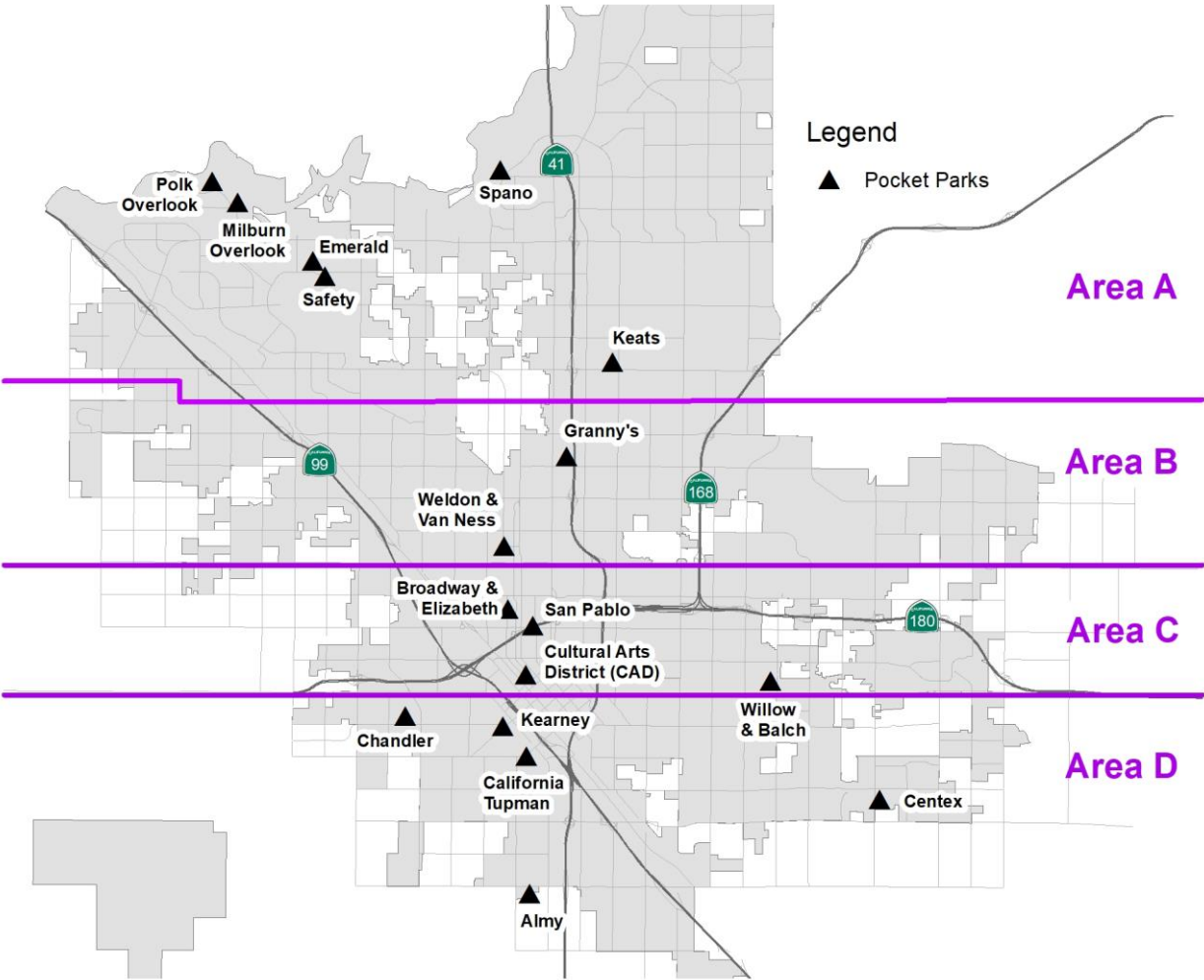
- (A) Forty-six percent (46%) percent of funds made available from [Section 7-1504](#) shall be dedicated as described in this paragraph.
- (B) Funds in this paragraph shall be made available for the improvement, restoration, rehabilitation, operations, and maintenance of projects and programs including, but not limited to, the following:
 - i. Park rehabilitation and other capital improvements in existing parks, including lighting;
 - ii. Facility upgrades to improve efficiency and safety;
 - iii. Playgrounds and picnic areas;
 - iv. New restrooms and restroom improvements;
 - v. Park access for individuals with disabilities;
 - vi. Improved maintenance and operations of existing parks;
 - vii. A park ranger program to improve safety in and around park facilities;
 - viii. Publicly owned sport facilities and swimming pools;
 - ix. City-owned arts, cultural, and recreational facilities located in parks, including Storyland/Playland and the Veterans Memorial Auditorium;
 - x. Other projects consistent with the Parks Master Plan, and subsequent updates;
 - xi. The planning, designing, engineering, and permitting activities associated with the above improvements.
- (C) Of the funds available pursuant to this paragraph, no less than fifty percent (50%) shall be made available for highest-need neighborhoods as defined in [Section 7-1508](#).

(2) New Neighborhood Parks; Senior and Youth Recreation Facilities.

- (A) Twenty-one point five (21.5%) of the funds made available from [Section 7-1504](#) shall be made available on an annual basis to improve the park system by investing in new park development and recreational facilities consistent with the Plan.
- (B) Funds in this paragraph shall be made available for acquisition, development, operations, maintenance and improvement projects including, but not limited to, the following:
 - i. New neighborhood parks, pocket parks, and community gardens;
 - ii. Public restrooms in new parks;
 - iii. New senior and community centers associated with the park system;
 - iv. New regional parks located in the City of Fresno;
 - v. Playgrounds and picnic areas in new parks;
 - vi. New public sport facilities and swimming pools;
 - vii. The planning, designing, engineering, and permitting activities associated with the above improvements.
- (C) Of the funds available pursuant to this paragraph, no less than fifty percent (50%) shall be made available for highest-need neighborhoods as defined in [Section 7-1508](#).



City of Fresno Pocket Park Statistics

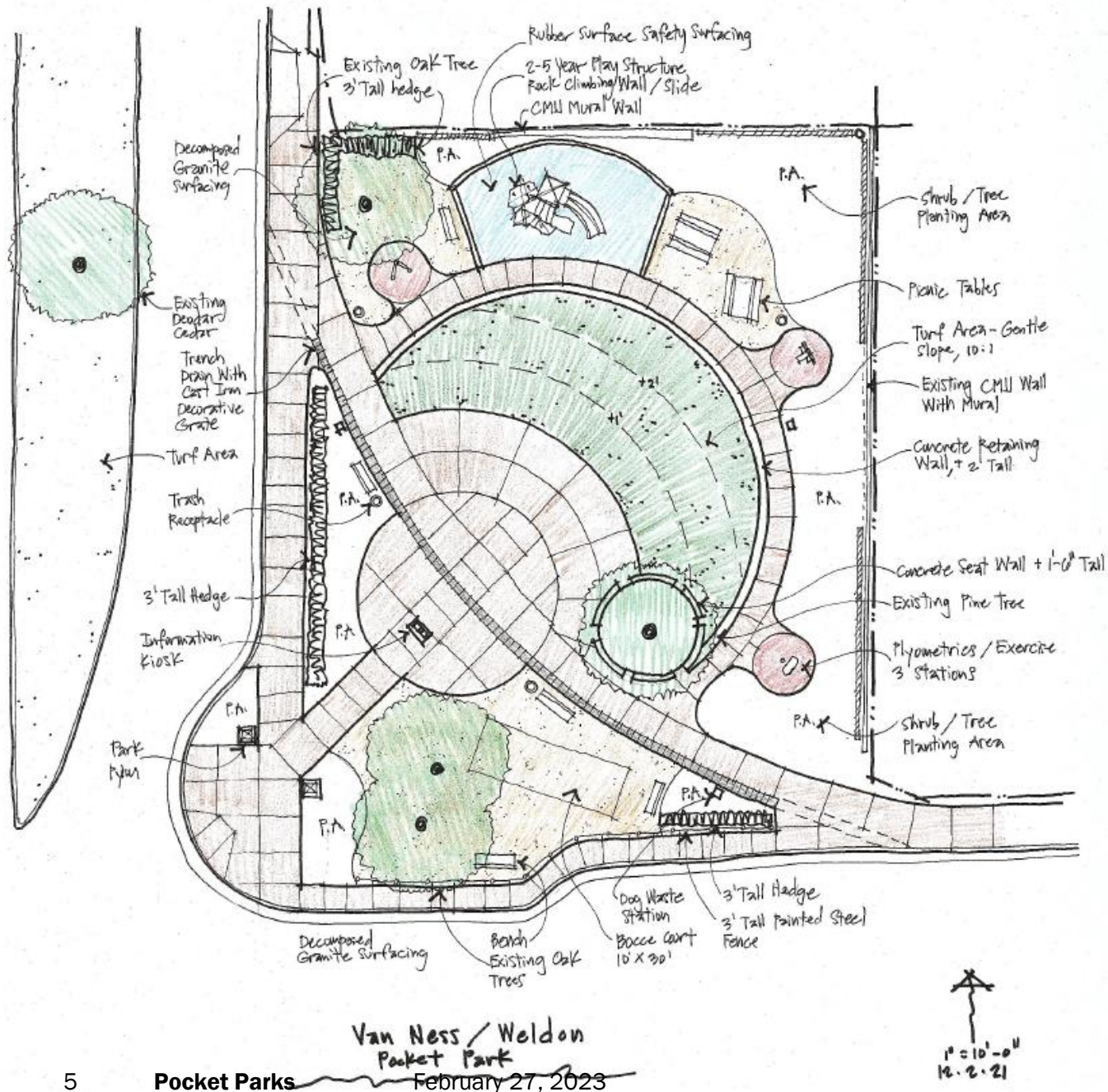


Number of PARCS Pocket Parks: 15
 PARCS Pocket Parks in Development: 2
 Percent located in High Needs areas: 18%
 Average size: 1.0 Acre

Pocket Park Count by PARCS Operational Area:

A	B	C	D
7	2	4	4





Van Ness / Weldon
Pocket Park

February 27, 2023

Pocket Parks are especially valuable in dense urban areas with limited open space resources.

- Parks Master Plan

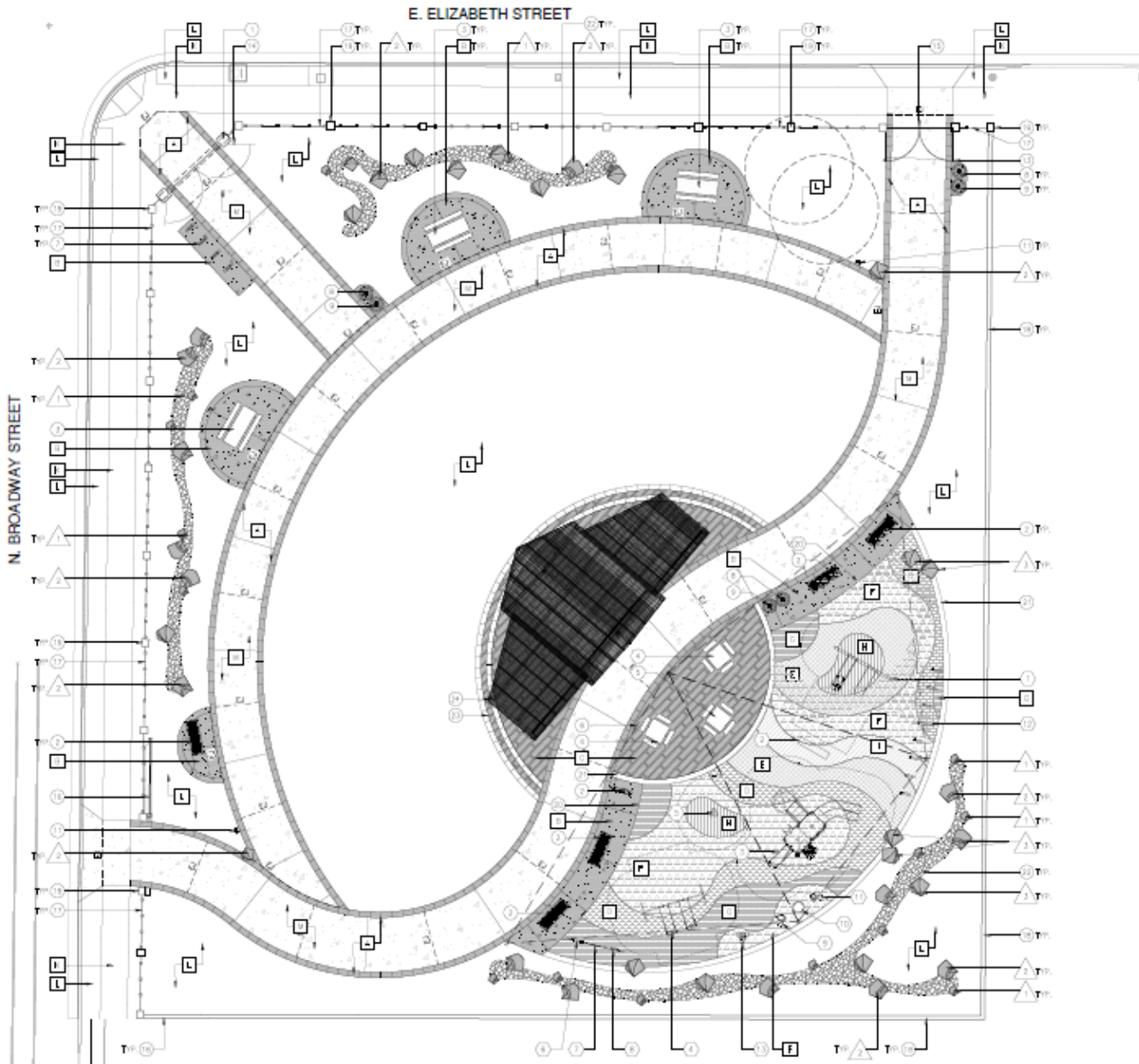




Pocket Parks are accessible and provide program or amenity elements that draw neighbors, such as a small event space, play area, tot lot, picnic table, benches, or shade structure.

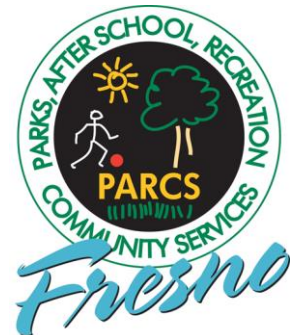
- Parks Master Plan





These small spaces should be efficiently designed to get as much amenity value as possible, but they are not intended to have the level of service or range of recreational activities offered at a Neighborhood or Community Park.

- Parks Master Plan



Questions?

