



PUBLIC WORKS DEPARTMENT

TRAFFIC OPERATIONS AND PLANNING DIVISION

FEATURES TO BE ADDED BY ANNEXATION NO. 112
COMMUNITY FACILITIES DISTRICT NO. 11

FINAL TRACT MAP NO. 6258 PHASE I
OF VESTING TENTATIVE TRACT MAP NO. 6258

- * FUTURE PHASES TO BE ANNEXED
- * FINAL TRACT MAP NO. 6261 PHASE II
- * FINAL TRACT MAP NO. 6271 PHASE III
- * FINAL TRACT MAP NO. 6272 PHASE IV



NOT TO SCALE
July 14, 2020

LANDSCAPE AND IRRIGATION:



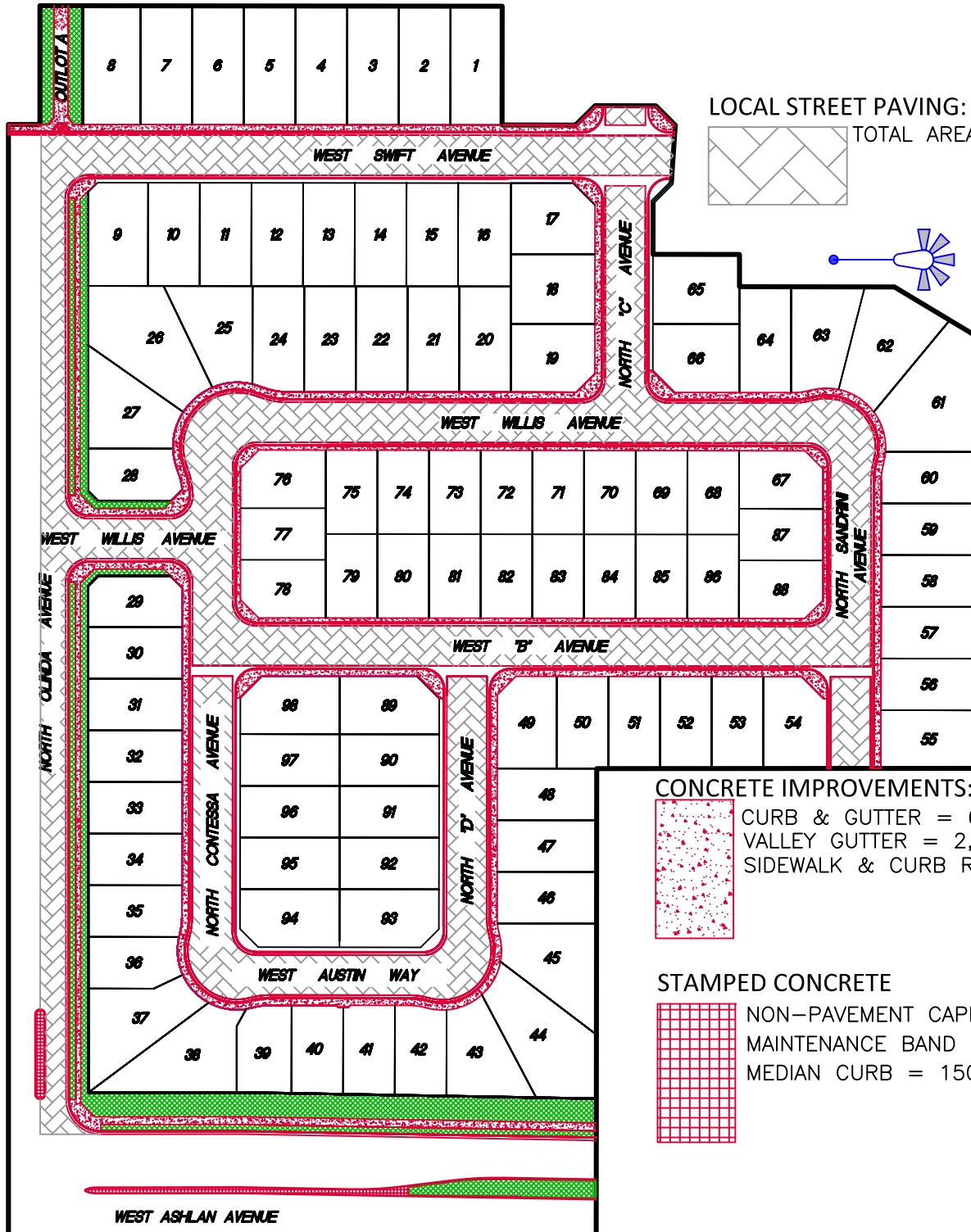
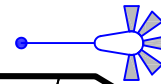
BUFFERS/PARKWAYS/MEDIAN (TREES & SHRUBS) = 2,411 SF
SMALL TREES = 37 EA
LARGE TREES = 28 EA

LOCAL STREET PAVING:

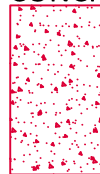


TOTAL AREA = 114,837 SF

STREET LIGHTS:
TOTAL = 23 EACH

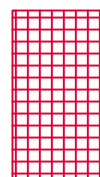


CONCRETE IMPROVEMENTS:



CURB & GUTTER = 6,360 LF
VALLEY GUTTER = 2,236 SF
SIDEWALK & CURB RAMPS = 22,900 SF

STAMPED CONCRETE



NON-PAVEMENT CAPPING = 995 SF
MAINTENANCE BAND = 149 SF
MEDIAN CURB = 150 LF