

Agenda Items: ID#20-0020 (10:15 A.M.)

Date: 1/16/2020

RECEIVED

FRESNO CITY COUNCIL

2020 JAN 15 A 8:11

CITY OF FRESNO
CITY CLERK'S OFFICE



Item(s)

File ID20-0020 (10:15 A.M.) – HEARING – Appeal Request: Denial of Waiver – Construction of sidewalk along S. Channing Avenue, APNs: 464-220-058, P19-

Sponsors: Public Works Department

Contents: PowerPoint Presentation

Supplemental Information:

Any agenda related public documents received and distributed to a majority of the City Council after the Agenda Packet is printed are included in Supplemental Packets. Supplemental Packets are produced as needed. The Supplemental Packet is available for public inspection in the City Clerk's Office, 2600 Fresno Street, during normal business hours (main location pursuant to the Brown Act, G.C. 54957.5(2)). In addition, Supplemental Packets are available for public review at the City Council meeting in the City Council Chambers, 2600 Fresno Street. Supplemental Packets are also available on-line on the City Clerk's website.

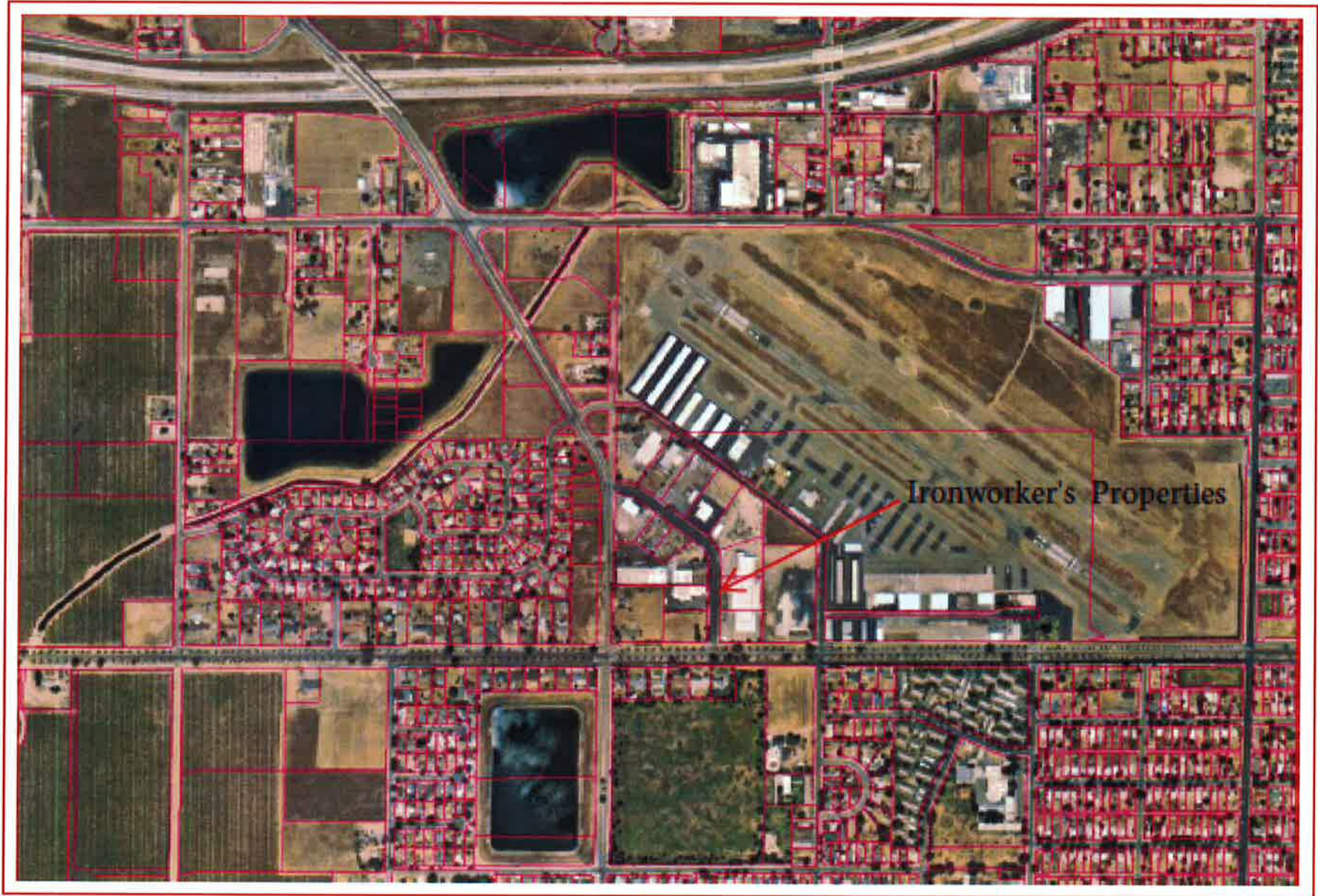
Americans with Disabilities Act (ADA):

The meeting room is accessible to the physically disabled, and the services of a translator can be made available. Requests for additional accommodations for the disabled, sign language interpreters, assistive listening devices, or translators should be made one week prior to the meeting. Please call City Clerk's Office at 621-7650. Please keep the doorways, aisles and wheelchair seating areas open and accessible. If you need assistance with seating because of a disability, please see Security.

IRON WORKERS TRAINING FACILITY

Northwest corner of Kearney and
Channing Way







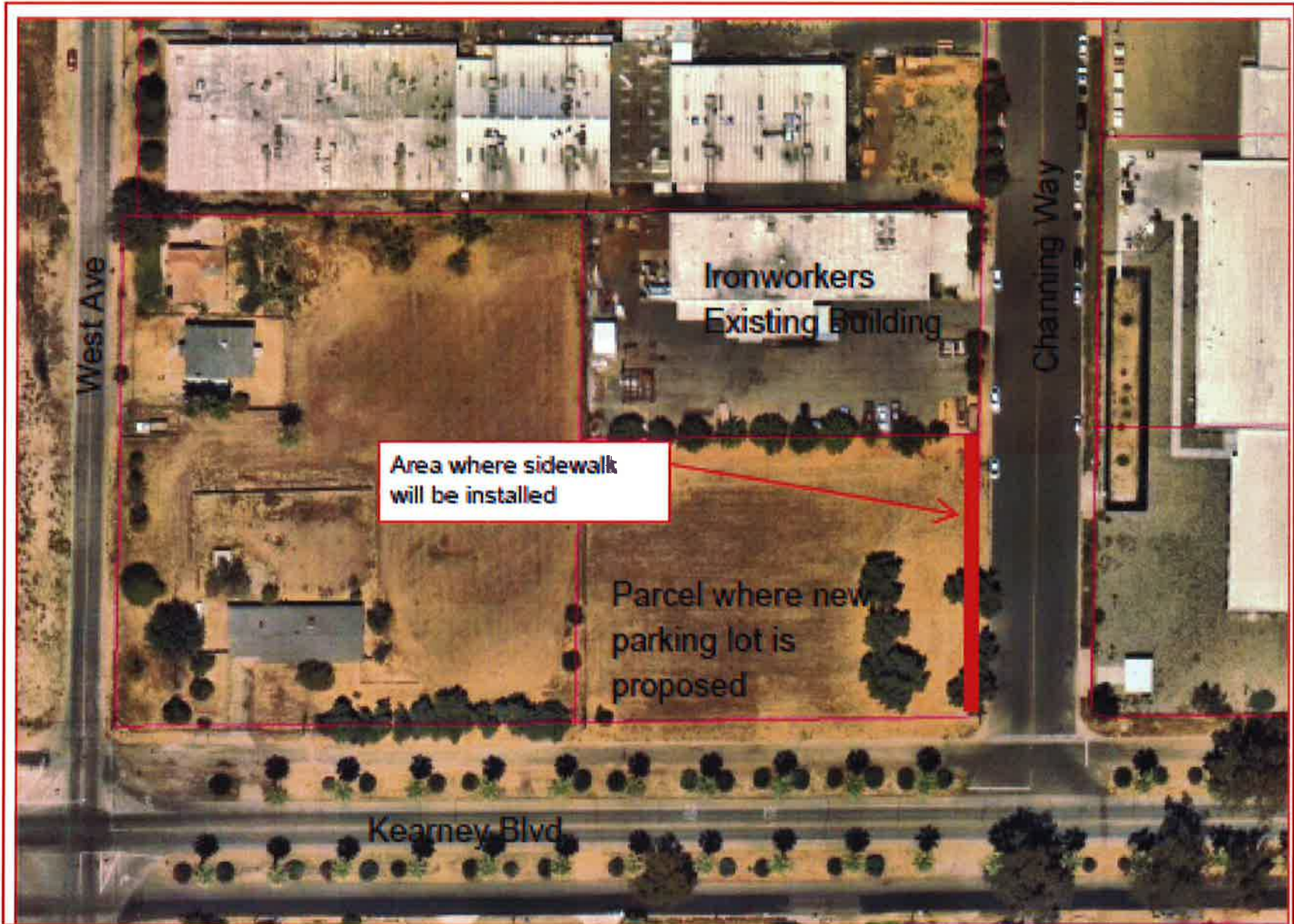
West Ave

Ironworkers
Existing Building

Parcel where new
parking lot is
proposed

Channing Way

Kearney Blvd



West Ave

Ironworkers
Existing Building

Area where sidewalk
will be installed

Parcel where new
parking lot is
proposed

Channing Way

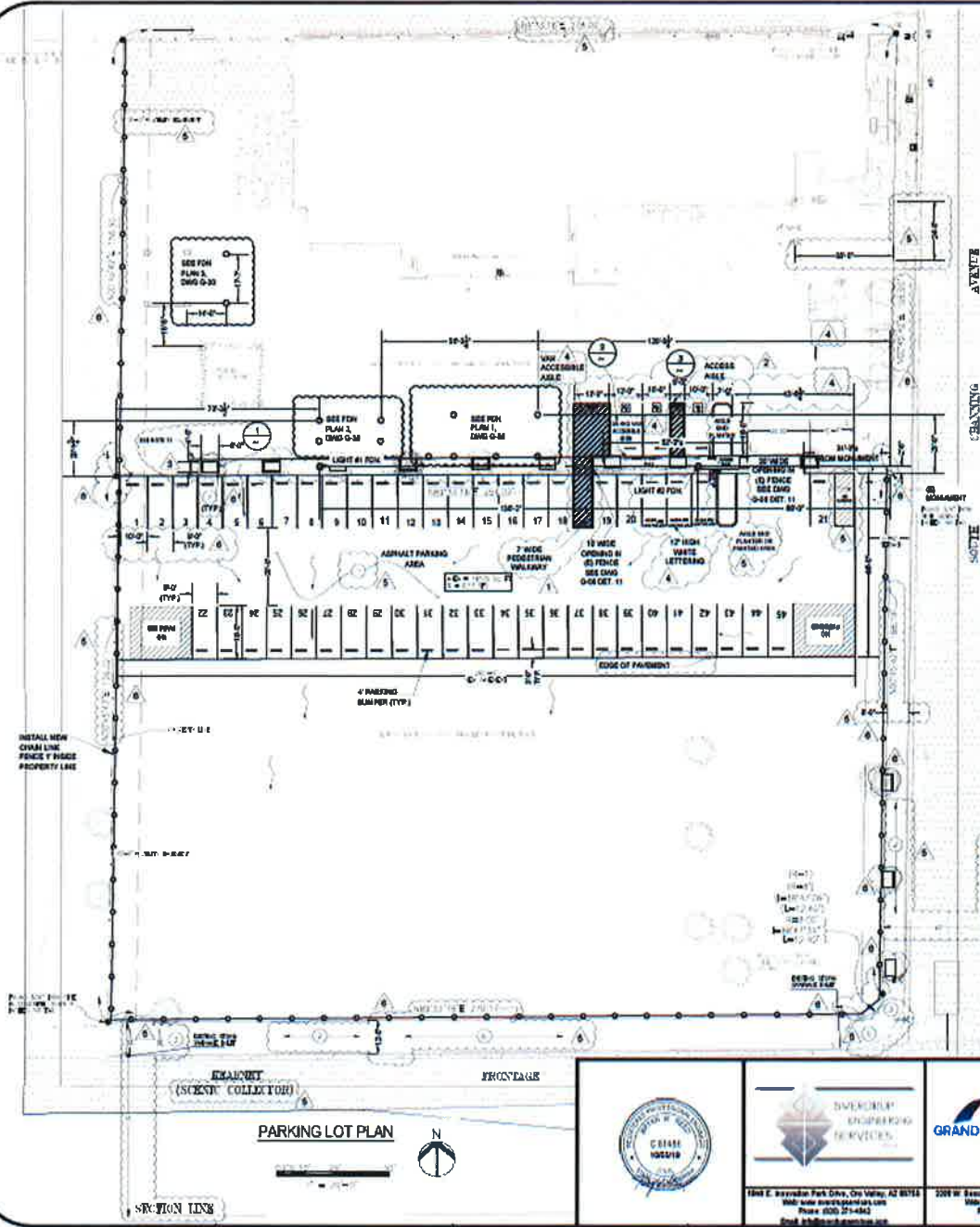
Kearney Blvd

Waivers Granted to Date

1. Sidewalks on Kearney deferred until additional development
2. Installation of metal streetlights, wood streetlights allowed to remain until additional development
3. Conversion of overhead wires, allowed to remain until additional development

Why are sidewalks needed?

1. Fresno has one of the highest pedestrian injury and fatality rates per capita in the nation.
2. Sidewalks required by Municipal Code and recently adopted Complete Street Policy.
3. Significant truck traffic, loading and unloading.
4. Ironworkers training facility serves students, they are more likely to be dropped off or walk than general public.
5. Anytime a pedestrian is on the sidewalk, they are safer than in the street, even if sidewalks are not continuous.
6. All projects should install sidewalks, waiving the requirements for some projects sets a precedence and plays to favoritism.
7. Required by the American Disabilities Act.



KEYED NOTES:

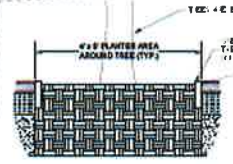
1. PAVEMENT AND DRAINAGE SHALL COMPLY WITH FW STD P-21, P-22, P-23.
2. INSTALL EDGEMOLDS FOR THE ENTIRE LENGTH OF THE PARCEL FRONTAGE. INSTALL PER STD. P-4.
3. CONSTRUCT AN UNDERGROUND ELECTRICAL LIGHTING SYSTEM PER S-1, S-2, S-4, AND S-6. WOODEN POLES SHALL BE REPLACED WITH METAL POLES.
4. INSTALL TREE WELLS FOR PW STD. P-8 BRAND AND SPECIFICATIONS SECTION 28 2 11.4.
5. CONSTRUCT CURB RAMP PER PW STD. P-30 AND P-32, CORNER CUT DIMENSIONS MAY BE REQUIRED.
6. UNDERGROUND ALL EXISTING OFF-SITE OVERHEAD UTILITIES WITHIN THE LIMIT OF THIS APPLICATION AS PER PAR SECTION 10-207.
7. INSTALL 4" P PLANTER AREAS AROUND ALL TREES BETWEEN EXISTING PARKING LOT AND PROPOSED PARKING LOT.

VOLUMES

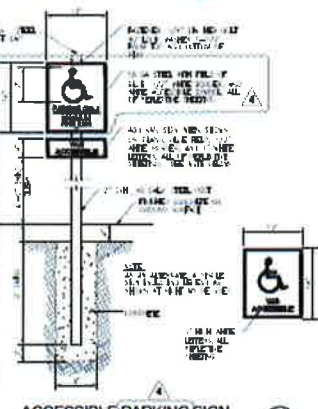
RAIN-GAGE DATA (PERRINO WOODSIDE INTERNATIONAL AIRPORT STATION 80 530)
 AVERAGE RAINFALL = 18.84 IN
 EVAPORATION RATE = 18.84 IN
 AFTER-EVENT TIME = 24 HRS
 RUNOFF COEFF. ASPHALT = 0.8
 Q = CTA
 SHEETFLOW = 8.17 CFS

GENERAL NOTES:

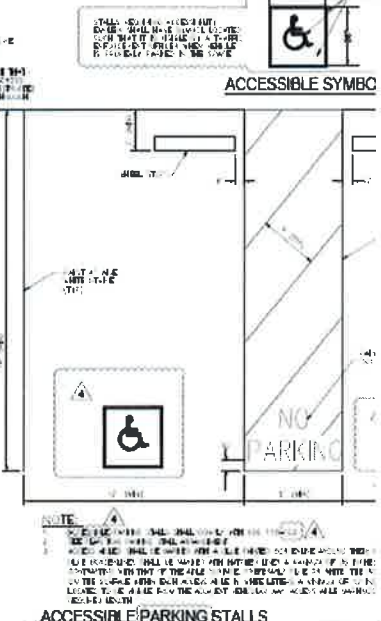
1. SEE DRAWING G-31 FOR CONCRETE AND CONSTRUCTION SPECIFICATIONS.
1. PARKING LOT GRUBBING IS BASED ON ONE IN OF THE CITY OF PERRINO PUBLIC WORKS PARKING MANUAL.
3. PARKING LOT STRIPING SHALL CONSIST OF A MINIMUM 4" WIDE STRIP FOR CITY OF PERRINO PUBLIC WORKS PARKING MANUAL, SECTION 2, PARAGRAPH F.
4. SEE DRAWING G-31 FOR GENERAL CONSTRUCTION NOTES.
5. SEE DRAWINGS G-34 AND G-37 FOR FENCE DETAILS.
6. SEE DRAWING G-30 FOR FOUNDATION PLAN.
7. SEE DRAWING G-31 FOR FOUNDATION DESIGN.
8. SEE DRAWING G-33 FOR ANCHOR BOLT PLAN.
8. ANY SURVEY MONUMENTS WITHIN THE AREA OF CONSTRUCTION SHALL BE PRESERVED OR RESET BY A PERSON LICENSED TO PRACTICE LAND SURVEYING IN THE STATE OF CALIFORNIA.
10. REPAIR ALL UNGRADED AND/OR OFF-GRADE CONCRETE STREET IMPROVEMENTS AS DETERMINED BY THE CONSTRUCTION MANAGEMENT ENGINEER PRIOR TO OCCUPANCY.
11. TWO WORKING DAYS PRIOR TO OCCUPANCY THE STREET FRONT-OF-YARD EXISTING UNDERGROUND FACILITY UNDERGROUND SERVICES.
12. THE PERFORMANCE OF ANY UNDERGROUND FACILITY WORK REQUIRES A STREET & CONDUITMENT OF WORK. ALL REPAIRS COMPLETION AND ACCEPTED BY THE CITY.
13. CONTACT THE PUBLIC WORKS DEPT. 880-671-8884, 14 WORKING DAYS PRIOR TO CONSTRUCTION.
14. SUBMIT STREET LIGHTING PLANS TO THE CITY OF PERRINO.
15. SEEDS ARE REQUIRED TO PROVIDE REQUIRED PUBLIC IMPROVEMENTS. OVERSEED DEVELOPMENT ENGINEER, & TO THE CITY WITH VERIFICATION OF CIP BUILDING PERMITS.
16. SCREENED (GRAY) LINE WORK REPRESENTS PER BLACK LINE WORK REPRESENTS PER



TREE WELL DETAIL
NTB



ACCESSIBLE PARKING SIGN
NTB



ACCESSIBLE PARKING STALLS
NTB

RULES FOR CONSTRUCTION		GRADING
BY	DATE	DESCRIPTION

REV	DATE	DESCRIPTION	BY	APP	CHK	
0	08/10/2019	ISSUED FOR CONSTRUCTION	HGP	EMS	MRC	FRESNO IRON
1	09/24/2019	RE-ISSUED FOR CONSTRUCTION	HGP	BAR	EMS	
2	09/09/2019	RE-ISSUED FOR CONSTRUCTION	HGP	BAR	EMS	
3	08/20/2019	RE-ISSUED FOR CONSTRUCTION	HGP	BAR	EMS	OVER AND PARKING
4	08/20/2019	RE-ISSUED FOR CONSTRUCTION	HGP	BAR	EMS	
5	09/10/2019	RE-ISSUED FOR CONSTRUCTION	HGP	BAR	EMS	
6	10/03/2019	RE-ISSUED FOR CONSTRUCTION	HGP	BAR	EMS	

REARVIEW (SCREEN COLLECTOR) FRONTAGE

PARKING LOT PLAN



SECTION LINE



EMERGENCY ENGINEERING SERVICES
 1488 E. International Park Drive, Oro Valley, AZ 85754
 Web: www.emerengencorp.com
 Phone: (520) 275-4842
 Fax: (520) 275-4842

GRAND BRIDGE INC.
 CIVIL ENGINEERING & CONSTRUCTION MANAGEMENT
 2208 W. Southshore Avenue, Fresno, CA 93711
 Web: www.grandbridge.com
 Phone: (559) 677-9715



1208 W. Clearing Way, Fresno, CA 93710
 Phone: (559) 405-1326
 Fax: (559) 405-1327

SHEET NUMBER:

Looking South on Channing Way, Ironwork's building on right side



Looking north on Channing Way from Kearney Blvd



Ironwork's Training Center



Looking south on Channing Way from in front of Ironwork's building



Looking North on Channing Way from Kearney Blvd.

