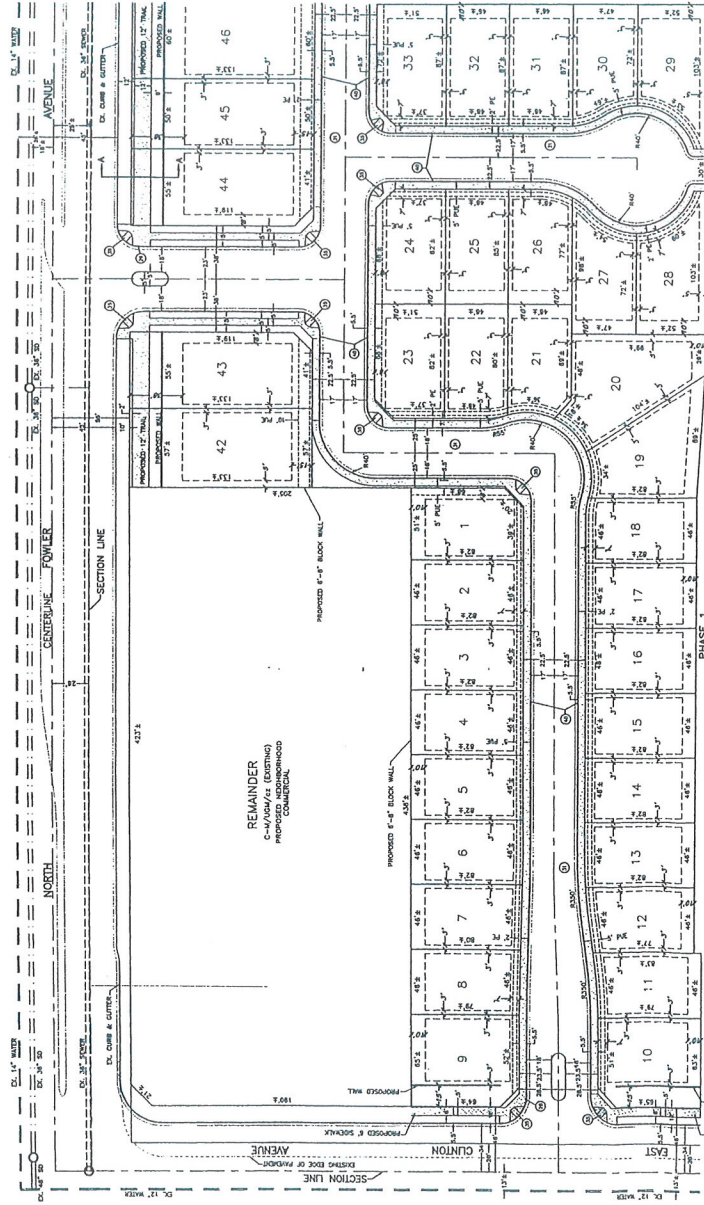


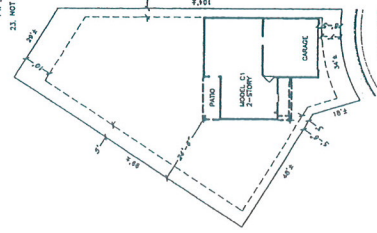
Exhibit D:
Exhibits for Conditional Use Permit No. C-13-092



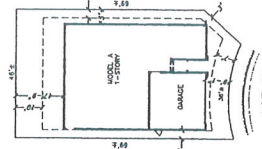
SEE SHEET TWO

SEE SHEET TWO

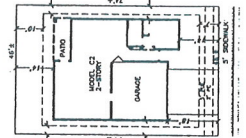
SCALE 1" = 40'



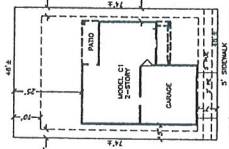
LOT 20
SCALE 1" = 20'



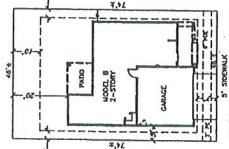
MODEL A
1-STORY
SCALE 1" = 20'



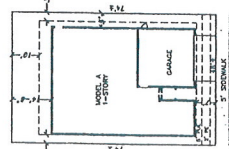
TYPICAL LOT
SCALE 1" = 20'



TYPICAL LOT
SCALE 1" = 20'



TYPICAL LOT
SCALE 1" = 20'



TYPICAL LOT
SCALE 1" = 20'

NOTES:

1. CONTRACTOR MUST VERIFY ALL APPROVALS FOR THE PROJECT AND OBTAIN NECESSARY PERMITS FROM THE CITY OF CHICAGO AND THE DEPARTMENT OF PUBLIC WORKS.
2. THE EXISTING SIDEWALK SHALL BE MAINTAINED THROUGHOUT THE PROJECT.
3. ALL UNIMPROVED PAVING SHALL BE PLACED ADJACENT TO THE EXISTING SIDEWALK.
4. ALL CONCRETE SHALL BE PLACED AND FINISHED TO THE FINISH SURFACE OF THE CURB AND GUTTER.
5. ALL CONCRETE SHALL BE PLACED AND FINISHED TO THE FINISH SURFACE OF THE CURB AND GUTTER.
6. ALL CONCRETE SHALL BE PLACED AND FINISHED TO THE FINISH SURFACE OF THE CURB AND GUTTER.
7. ALL CONCRETE SHALL BE PLACED AND FINISHED TO THE FINISH SURFACE OF THE CURB AND GUTTER.
8. ALL CONCRETE SHALL BE PLACED AND FINISHED TO THE FINISH SURFACE OF THE CURB AND GUTTER.
9. ALL CONCRETE SHALL BE PLACED AND FINISHED TO THE FINISH SURFACE OF THE CURB AND GUTTER.
10. ALL CONCRETE SHALL BE PLACED AND FINISHED TO THE FINISH SURFACE OF THE CURB AND GUTTER.
11. ALL CONCRETE SHALL BE PLACED AND FINISHED TO THE FINISH SURFACE OF THE CURB AND GUTTER.
12. ALL CONCRETE SHALL BE PLACED AND FINISHED TO THE FINISH SURFACE OF THE CURB AND GUTTER.
13. ALL CONCRETE SHALL BE PLACED AND FINISHED TO THE FINISH SURFACE OF THE CURB AND GUTTER.
14. ALL CONCRETE SHALL BE PLACED AND FINISHED TO THE FINISH SURFACE OF THE CURB AND GUTTER.
15. ALL CONCRETE SHALL BE PLACED AND FINISHED TO THE FINISH SURFACE OF THE CURB AND GUTTER.
16. ALL CONCRETE SHALL BE PLACED AND FINISHED TO THE FINISH SURFACE OF THE CURB AND GUTTER.
17. ALL CONCRETE SHALL BE PLACED AND FINISHED TO THE FINISH SURFACE OF THE CURB AND GUTTER.
18. ALL CONCRETE SHALL BE PLACED AND FINISHED TO THE FINISH SURFACE OF THE CURB AND GUTTER.
19. ALL CONCRETE SHALL BE PLACED AND FINISHED TO THE FINISH SURFACE OF THE CURB AND GUTTER.
20. ALL CONCRETE SHALL BE PLACED AND FINISHED TO THE FINISH SURFACE OF THE CURB AND GUTTER.
21. ALL CONCRETE SHALL BE PLACED AND FINISHED TO THE FINISH SURFACE OF THE CURB AND GUTTER.
22. ALL CONCRETE SHALL BE PLACED AND FINISHED TO THE FINISH SURFACE OF THE CURB AND GUTTER.
23. ALL CONCRETE SHALL BE PLACED AND FINISHED TO THE FINISH SURFACE OF THE CURB AND GUTTER.
24. ALL CONCRETE SHALL BE PLACED AND FINISHED TO THE FINISH SURFACE OF THE CURB AND GUTTER.
25. ALL CONCRETE SHALL BE PLACED AND FINISHED TO THE FINISH SURFACE OF THE CURB AND GUTTER.
26. ALL CONCRETE SHALL BE PLACED AND FINISHED TO THE FINISH SURFACE OF THE CURB AND GUTTER.
27. ALL CONCRETE SHALL BE PLACED AND FINISHED TO THE FINISH SURFACE OF THE CURB AND GUTTER.
28. ALL CONCRETE SHALL BE PLACED AND FINISHED TO THE FINISH SURFACE OF THE CURB AND GUTTER.
29. ALL CONCRETE SHALL BE PLACED AND FINISHED TO THE FINISH SURFACE OF THE CURB AND GUTTER.
30. ALL CONCRETE SHALL BE PLACED AND FINISHED TO THE FINISH SURFACE OF THE CURB AND GUTTER.
31. ALL CONCRETE SHALL BE PLACED AND FINISHED TO THE FINISH SURFACE OF THE CURB AND GUTTER.
32. ALL CONCRETE SHALL BE PLACED AND FINISHED TO THE FINISH SURFACE OF THE CURB AND GUTTER.
33. ALL CONCRETE SHALL BE PLACED AND FINISHED TO THE FINISH SURFACE OF THE CURB AND GUTTER.
34. ALL CONCRETE SHALL BE PLACED AND FINISHED TO THE FINISH SURFACE OF THE CURB AND GUTTER.
35. ALL CONCRETE SHALL BE PLACED AND FINISHED TO THE FINISH SURFACE OF THE CURB AND GUTTER.
36. ALL CONCRETE SHALL BE PLACED AND FINISHED TO THE FINISH SURFACE OF THE CURB AND GUTTER.
37. ALL CONCRETE SHALL BE PLACED AND FINISHED TO THE FINISH SURFACE OF THE CURB AND GUTTER.
38. ALL CONCRETE SHALL BE PLACED AND FINISHED TO THE FINISH SURFACE OF THE CURB AND GUTTER.
39. ALL CONCRETE SHALL BE PLACED AND FINISHED TO THE FINISH SURFACE OF THE CURB AND GUTTER.
40. ALL CONCRETE SHALL BE PLACED AND FINISHED TO THE FINISH SURFACE OF THE CURB AND GUTTER.
41. ALL CONCRETE SHALL BE PLACED AND FINISHED TO THE FINISH SURFACE OF THE CURB AND GUTTER.
42. ALL CONCRETE SHALL BE PLACED AND FINISHED TO THE FINISH SURFACE OF THE CURB AND GUTTER.
43. ALL CONCRETE SHALL BE PLACED AND FINISHED TO THE FINISH SURFACE OF THE CURB AND GUTTER.
44. ALL CONCRETE SHALL BE PLACED AND FINISHED TO THE FINISH SURFACE OF THE CURB AND GUTTER.
45. ALL CONCRETE SHALL BE PLACED AND FINISHED TO THE FINISH SURFACE OF THE CURB AND GUTTER.
46. ALL CONCRETE SHALL BE PLACED AND FINISHED TO THE FINISH SURFACE OF THE CURB AND GUTTER.

LEGEND:

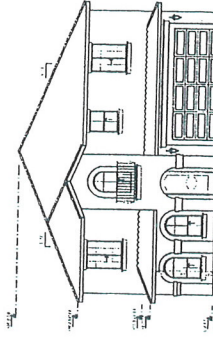
- 1. WHITE BLOCK WALL
- 2. CONCRETE
- 3. CURB
- 4. CURB AND GUTTER
- 5. EXISTING CURB AND GUTTER
- 6. EXISTING PROPERTY LINE
- 7. PROPERTY LINE
- 8. RIGHT OF WAY LINE
- 9. SETBACK LINE
- 10. SIDEWALK PER P.W. STD. P-5
- 11. SEE CORRESPONDING NOTES

SITE PLAN
APN 310-040-10 AND 11
C-13-092
TRACT 6033
SHEET 3 OF 4

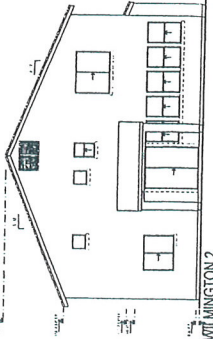
GARY C. GIANNETTA
REGISTERED PROFESSIONAL LAND SURVEYOR
NO. 02-0000000
DATE: 8/27/13

APPL. NO. C-13-092 EXHIBIT A3 DATE 08/13/13

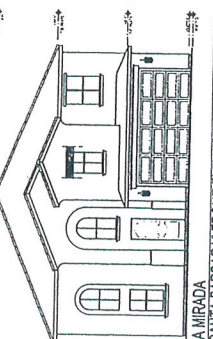
PROJ. ENG. _____ DATE _____
TRAFFIC ENG. _____ DATE _____
COND. APPROVED BY _____ DATE _____
CITY OF CHICAGO DEPARTMENT OF PUBLIC WORKS



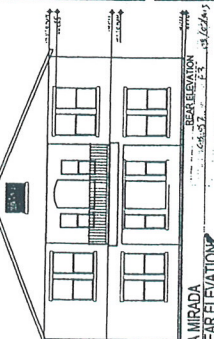
WILMINGTON 2
 'SANTA BARBARA' FRONT ELEVATION



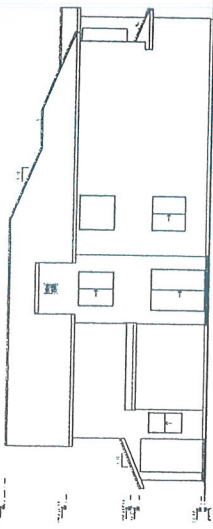
WILMINGTON 2
 REAR ELEVATION



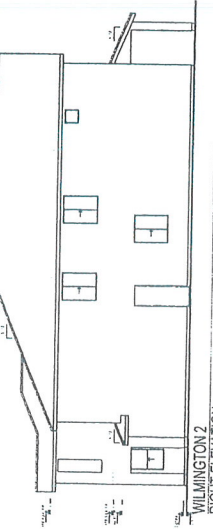
LA MIRADA
 'SANTA BARBARA' FRONT ELEVATION



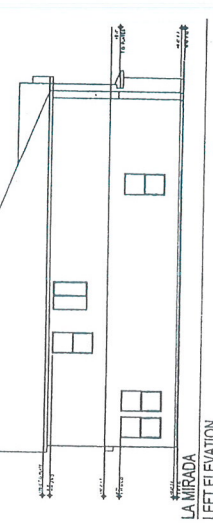
LA MIRADA
 REAR ELEVATION



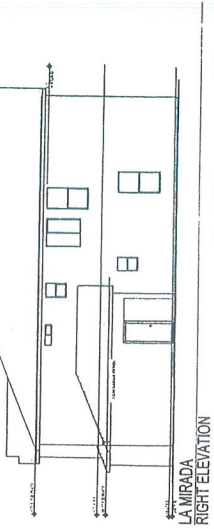
WILMINGTON 2
 LEFT ELEVATION



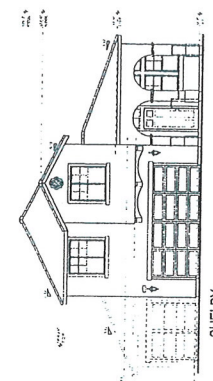
WILMINGTON 2
 RIGHT ELEVATION



LA MIRADA
 LEFT ELEVATION



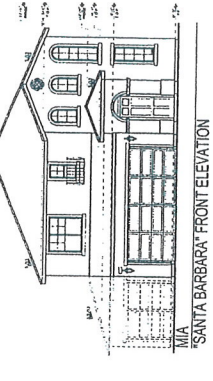
LA MIRADA
 RIGHT ELEVATION



SHELBY
 'SANTA BARBARA' FRONT ELEVATION



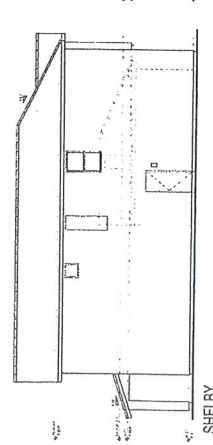
SHELBY
 REAR ELEVATION



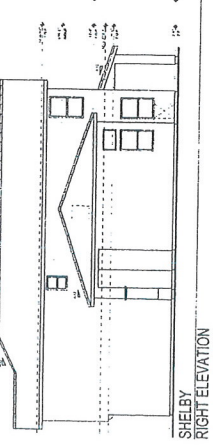
MIA
 'SANTA BARBARA' FRONT ELEVATION



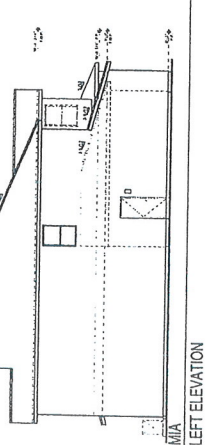
MIA
 REAR ELEVATION



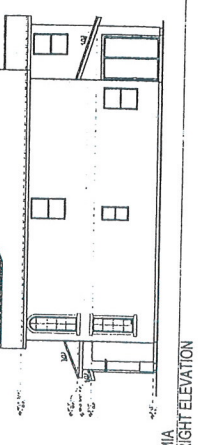
SHELBY
 LEFT ELEVATION



SHELBY
 RIGHT ELEVATION



MIA
 LEFT ELEVATION



MIA
 RIGHT ELEVATION

APPL. NO. C13092 EXHIBIT ES DATE 08/17/13
 PROJ. ENG. _____ DATE _____
 TRAFFIC ENG. _____ DATE _____
 COND. APPROVED BY _____ DATE _____
 CITY OF FRESNO PLANNING & DEVELOPMENT DEPT

