

DOWNTOWN FRESNO

PHASE II APPLICATION



Infill Infrastructure Grant – Catalytic (IIGC)
Qualifying Infill Areas

CIP Site Control

Documentation of Capital Improvement Project (CIP) site control in accordance with UMR §8303.

Overview

The City of Fresno is proposing three offsite CIPs. Two (water/sewer improvements and public street work) are on the public right-of-way, so additional site control is not required. One CIP (structured parking) is on a parcel owned by the City of Fresno. Improvement descriptions are detailed below.

CIP 1: Water and Sewer Improvements in Downtown Fresno

Site Control: Public Right-of-Way

Improvements Description:

The City of Fresno has site control of the proposed CIP. The proposed water/sewer improvements, described below and shown in the attached maps, are located in the public right-of-way. Per the Fresno Local Area Formation Commission (LAFCO), water and sewer in this area is within the City of Fresno's sphere of influence and, therefore, within the City's jurisdiction.

Proposed IIGC funds will help the City of Fresno increase capacity of the sanitary sewer system, as well as rehabilitate existing sewer infrastructure in the CQIA area, thereby supporting current, proposed, and future development throughout Downtown Fresno. The capital improvements will include the replacement of 3,432 linear feet of 24-inch sewer mains along Broadway, San Benito, and H Streets; 1,779 linear feet of 12-inch sewer mains along H and F streets; 863 linear feet of 18-inch along Fulton Street. This will also include the required ancillary work of trench resurfacing, manhole replacements and upgrades, and the necessary equipment, design, and preparation for worker and environmental safety throughout the project.

IIGC funds will also help the City of Fresno upsize water mains, relocate water system infrastructure to more accessible locations for future maintenance, and install the appropriate meter boxes to serve current, proposed, and future development. Specifically, the funds will include the installation of 2,875 linear feet of 16-inch water main along F Street and Mono Street, the installation of 10,360 linear feet of 24-inch water mains along H St, Tulare St, and Tuolumne St and the necessary ancillary work of: trench resurfacing, service, meter box and hydrant replacements and upgrades, road striping and surfacing replacements, and the necessary equipment, design, and preparation for worker and environmental safety throughout the project. Alleyway water infrastructure will be removed and replaced by underground service connections to the newly installed water mains in the public right-of-way. See aerial and vector maps attached for locations and engineering plans.

DOWNTOWN FRESNO

PHASE II APPLICATION



Infill Infrastructure Grant – Catalytic (IIGC)
Qualifying Infill Areas

CIP 2 = Street Work at Tuolumne and Van Ness

Site Control: Public Right-of-Way

Improvements Description:

The City of Fresno has site control over the proposed CIP. The proposed street work improvements, as described below, will improve pedestrian safety, accessibility, traffic, and greening necessary for the IIGC Anchor Housing Development (HD1-HD6) on the north end of the CQIA.

These improvements are part of the long-term vision for the urban grid and pedestrian network within the Fulton Corridor Specific Plan area. The work will include site preparation such as clearing, grubbing, demolition, erosion/weed control, and fugitive dust management; surface improvements to the curb, gutter and sidewalk and installation of pedestrian scale lighting, urban greening and a landscape irrigation system, and the installation of eight pedestrian push buttons at Tuolumne and Van Ness. This also includes the necessary ancillary work of construction inspection and mediation, contractor mobilization, and traffic management.

CIP 3 Structured Parking on North End - Surface Lot 2

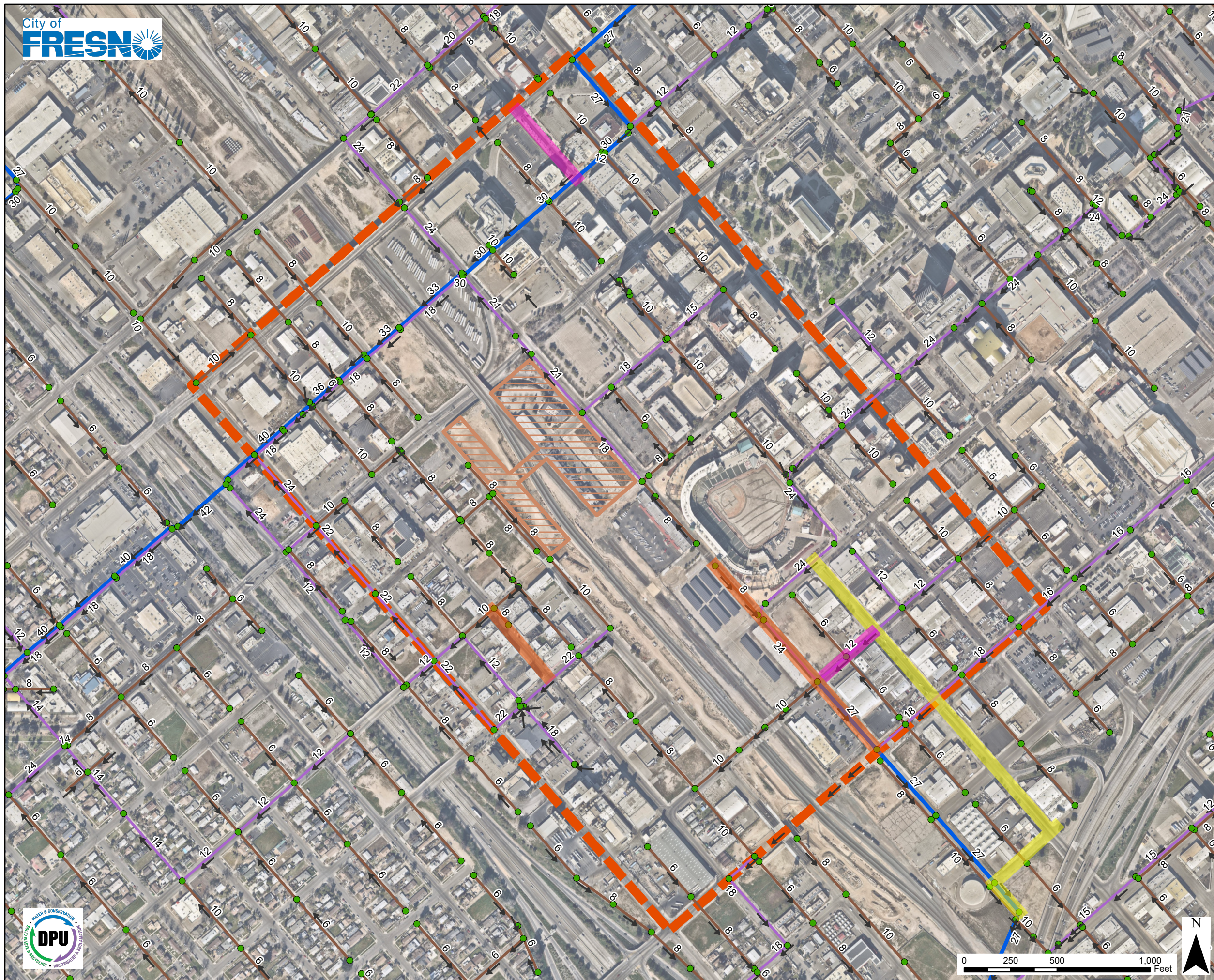
Site Control: Fee Simple

Deed.

Improvements Description:

The City of Fresno has site control over the proposed CIP as the City owns the parcel as evidenced by the Grant Deed. Separate from the CIP, a portion of the parcel will be developed by the Housing Authority of the City of Fresno as described in the application as Housing Development 5 (HD5): Market 1.

The structured parking is an offsite CIP as it will be a separate structure from HD5. The structured parking will accommodate affordable units developed towards the north end of the CQIA area.



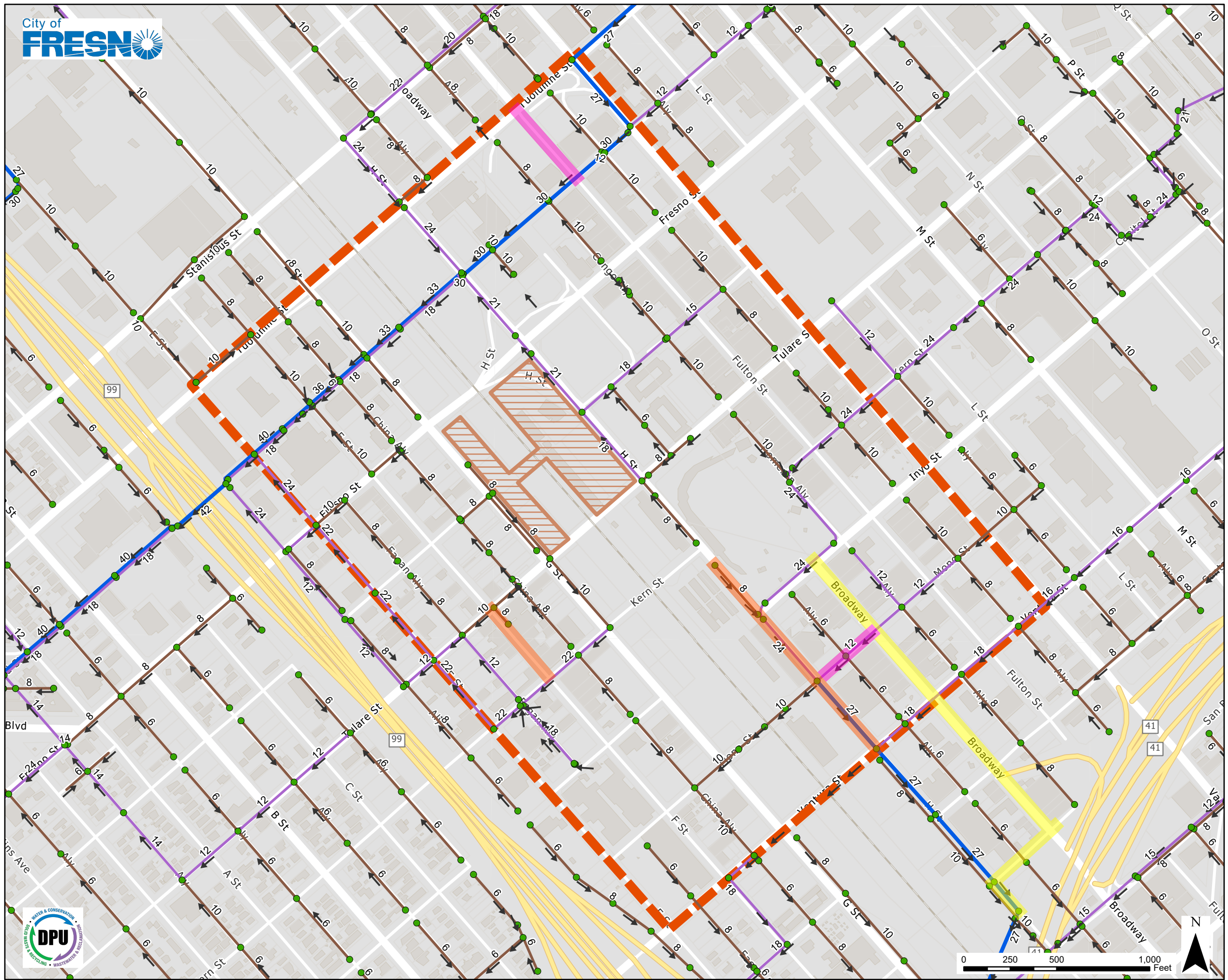
Legend

Sewer Mains by Diameter

- 10" and Smaller
- 12" - 24"
- 26" and Larger
- Sewer Main Flow Direction
- Manholes
- Site Location
- HSR Station
- Proposed 12" Sewer Main (Approx. 1,779 LF)
- Proposed 18" Sewer Main (Approx. 863 LF)
- Proposed 24" Sewer Main (Approx. 2,581 LF)

Sanitary Sewer Mains by Diameter

City of Fresno
Department of Public Utilities



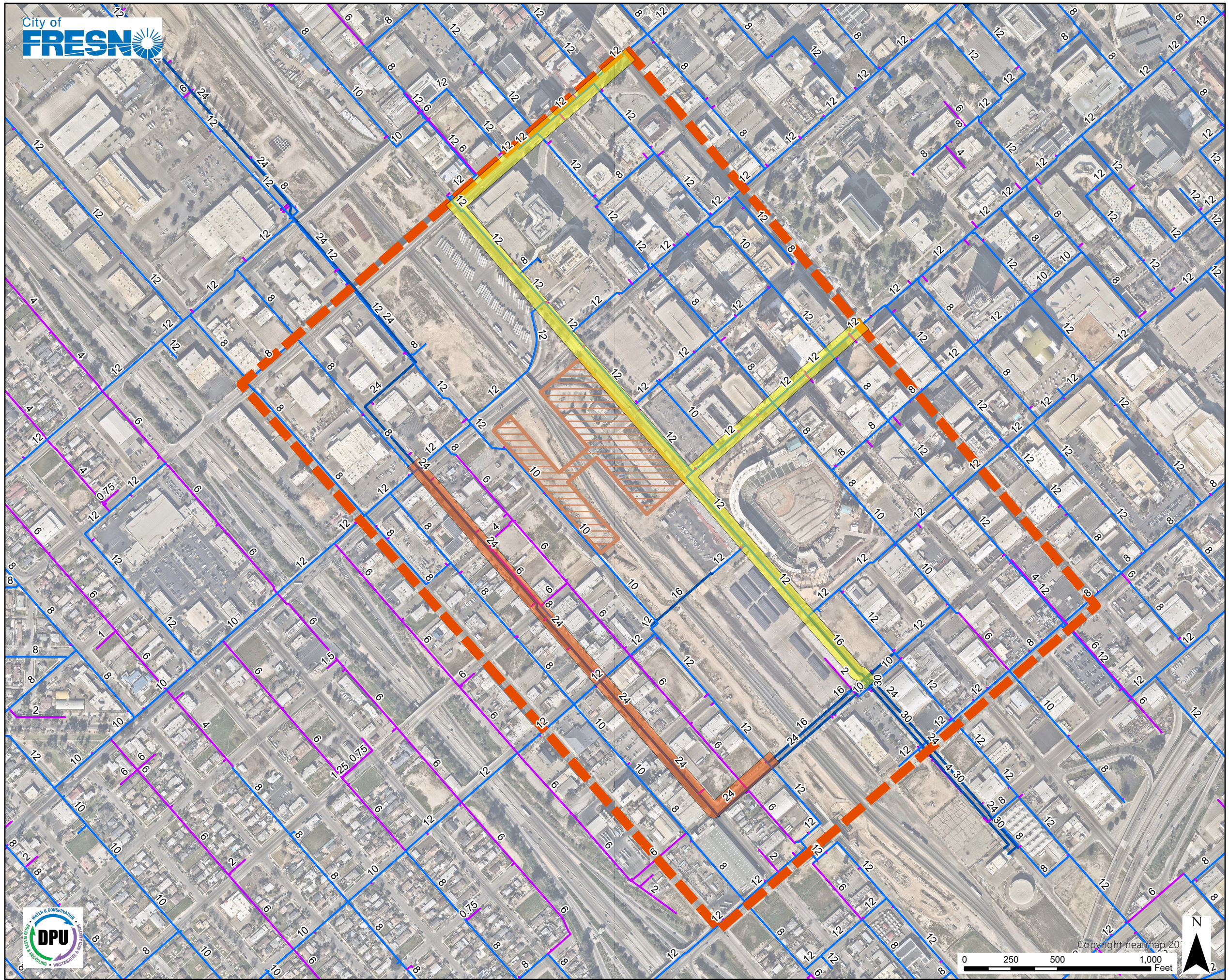
Legend

Sewer Mains by Diameter

- 10" and Smaller
- 12"- 24"
- 26" and Larger
- Sewer Main Flow Direction
- Manholes
- Site Location
- HSR Station
- Proposed 12" Sewer Main (Approx. 1,779 LF)
- Proposed 18" Sewer Main (Approx. 863 LF)
- Proposed 24" Sewer Main (Approx. 2,581 LF)

Sanitary Sewer Mains by Diameter

City of Fresno
Department of Public Utilities



Legend

Water Mains by Diameter

- 6" and Smaller
- 8" - 12"
- 14" and Larger
- Site Location
- HSR Station
- Proposed 16" Water Main (Approx. 2,831 LF)
- Proposed 24" Water Main (Approx. 5,781 LF)

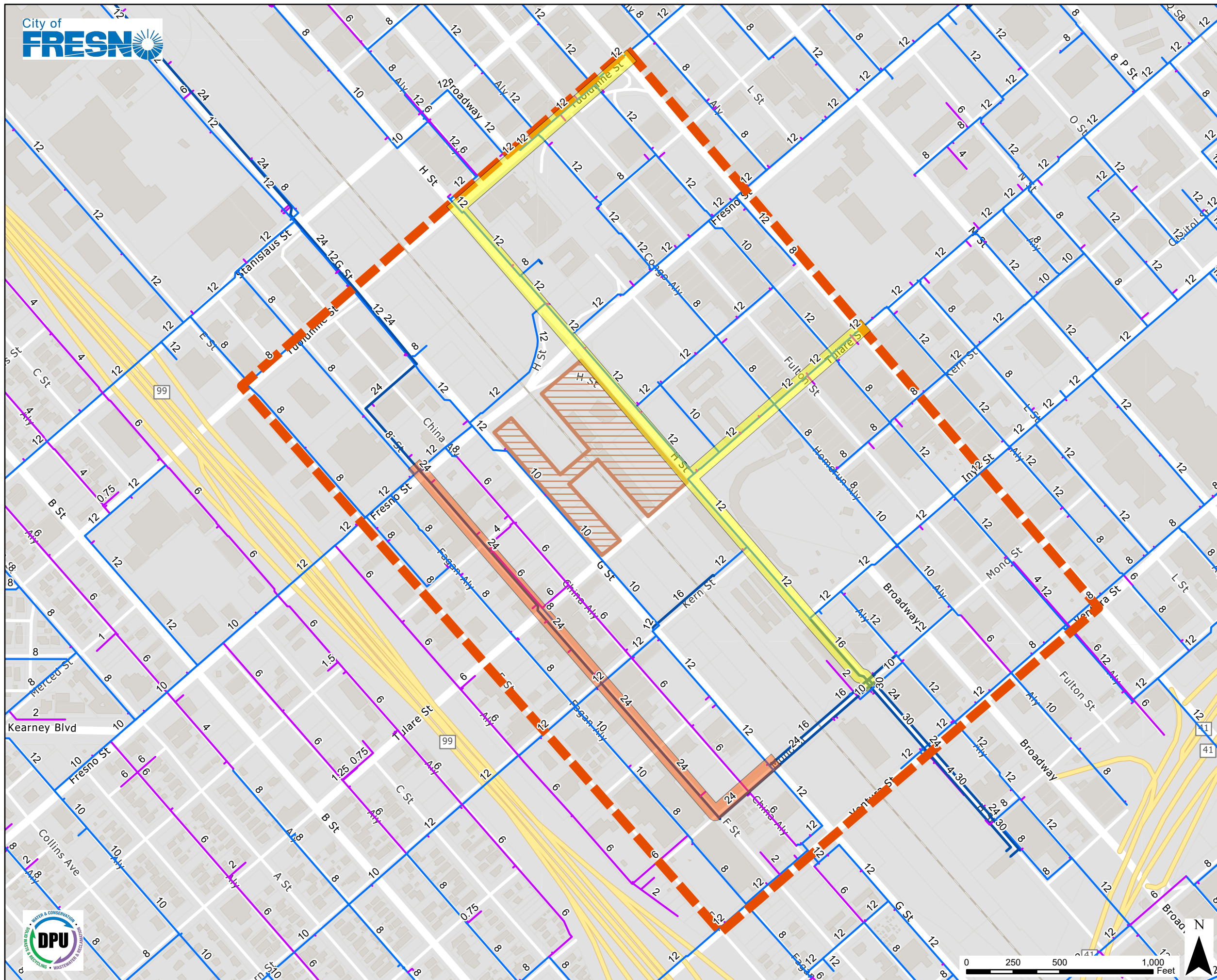
Water Mains by Diameter

City of Fresno
Department of Public Utilities

Legend

Water Mains by Diameter

- 6" and Smaller
- 8" - 12"
- 14" and Larger
- Site Location
- ▨ HSR Station
- Proposed 16" Water Main (Approx. 2,831 LF)
- Proposed 24" Water Main (Approx. 5,781 LF)



Water Mains by Diameter

City of Fresno
Department of Public Utilities

DOWNTOWN FRESNO

PHASE II APPLICATION

Infill Infrastructure Grant – Catalytic (IIGC)
Qualifying Infill Areas



03. Infill-Aerial Photos

The following aerial photograph highlights CIP #3.

ArcGIS Web Map



4/10/2023, 7:22:42 AM

Parcels

City

1:2,257
0 0.02 0.04 0.08 mi
0 0.03 0.07 0.13 km

Copyright nearmap 2015

Map 1: HD#1-6 and structured parking at the North End of Fulton Street.

Web AppBuilder for ArcGIS
Copyright nearmap 2015