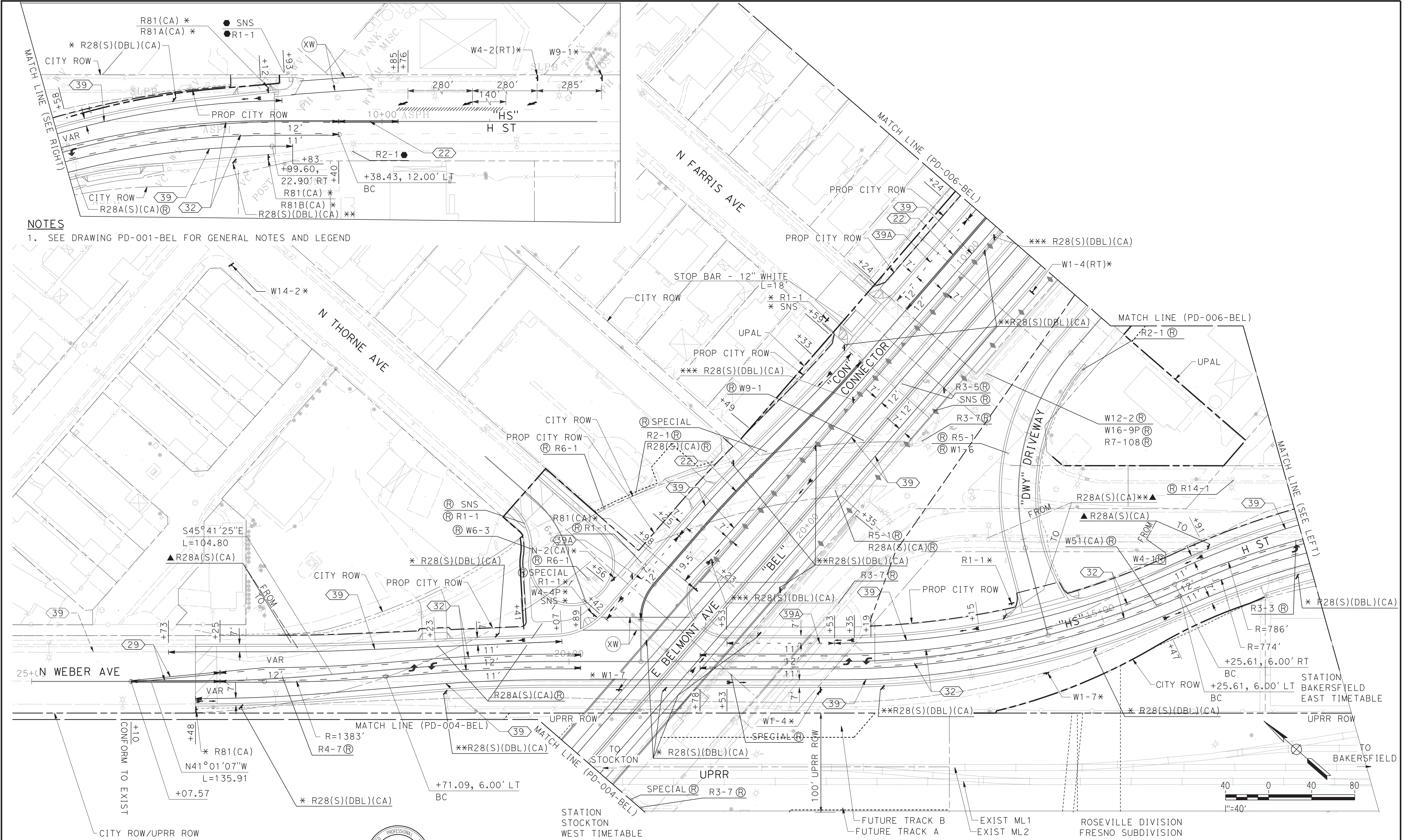
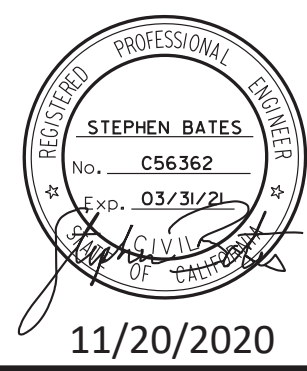


pw: \\xp1002pwint01.parsons.com\California State Documents\CHSTP CP1\05 - Design\CADD\Sheet Files\Civil\114 - W Belmont Avenue\CP1-CV-PD002-BEL.dgn
 5/21/2020 10:53:33 AM CHSTP:bi
 CHSR_PDF_full_block.plt c:\pw_working\california\parsons_p0014666\dms12453\CP1-CV-PD005-BEL.dgn



NOTES
 1. SEE DRAWING PD-001-BEL FOR GENERAL NOTES AND LEGEND



11/20/2020

REV	DATE	BY	CHK	APP	DESCRIPTION
3	05/27/20	MT	JN	SB	READY FOR CONSTRUCTION - CITY COMMENTS
2	01/10/20	MT	JN	SB	READY FOR CONSTRUCTION - CITY COMMENTS
1	7/26/19	AM	JM	SB	READY FOR CONSTRUCTION - CITY COMMENTS
0	06/01/18	MM	VK	SB	READY FOR CONSTRUCTION

DESIGNED BY
M. MOHRMAN
 DRAWN BY
O. MEHRDEL
 CHECKED BY
R. PATEL
 IN CHARGE
S. BATES
 DATE
06/01/18

Tutor Perini
ZACHRY
PARSONS
 A joint venture

CONSULTANT
 TP2P, A Joint Venture
 1401 Fulton St.
 Suite 400
 Fresno, California 93721
 Tel. (559) 385-7025

CITY OF FRESNO DEPARTMENT OF PUBLIC WORKS
 CALIFORNIA HIGH-SPEED TRAIN PROJECT
 FINAL FACILITY PLANS
 WEST BELMONT AVENUE GRADE SEPARATION
 PAVEMENT DELINEATION AND SIGN PLAN
 SHEET 5 OF 6

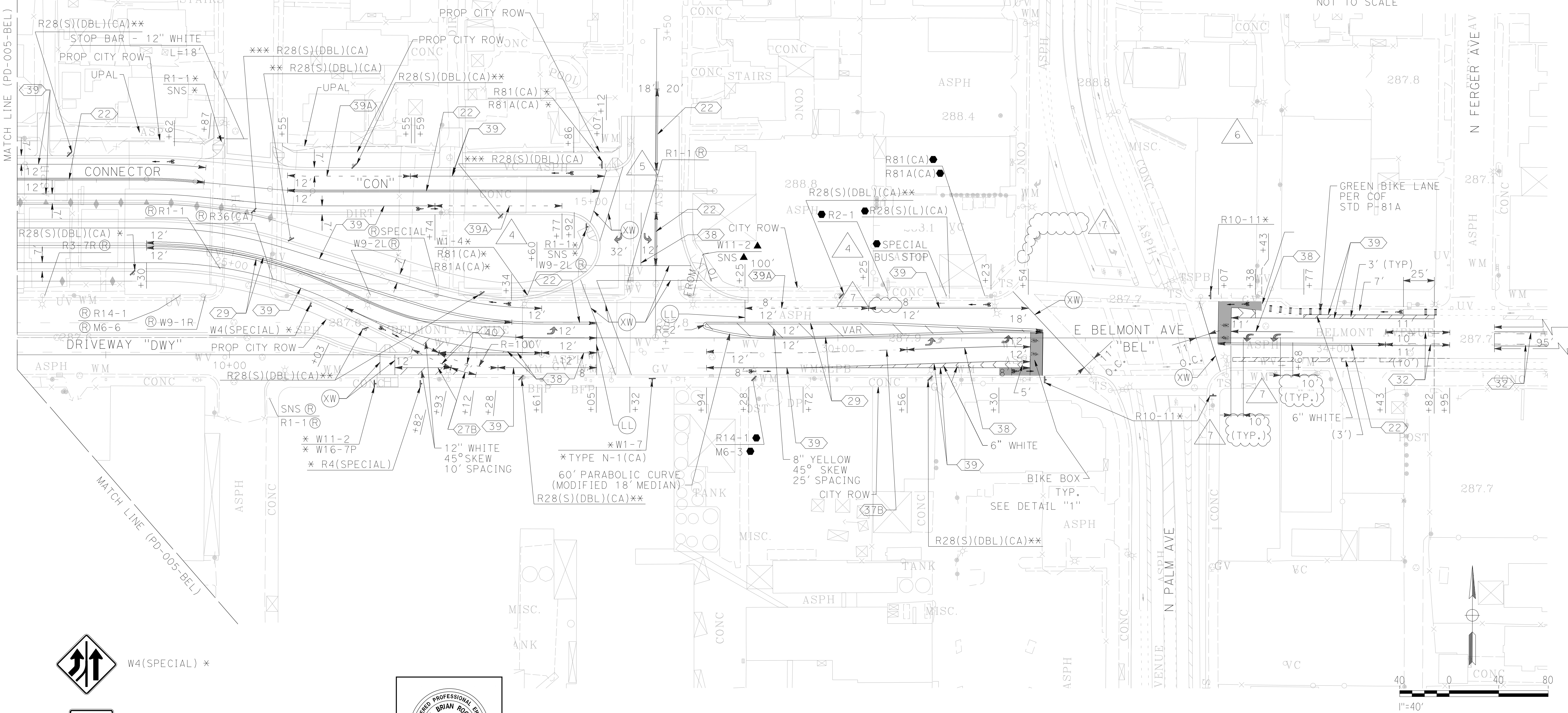
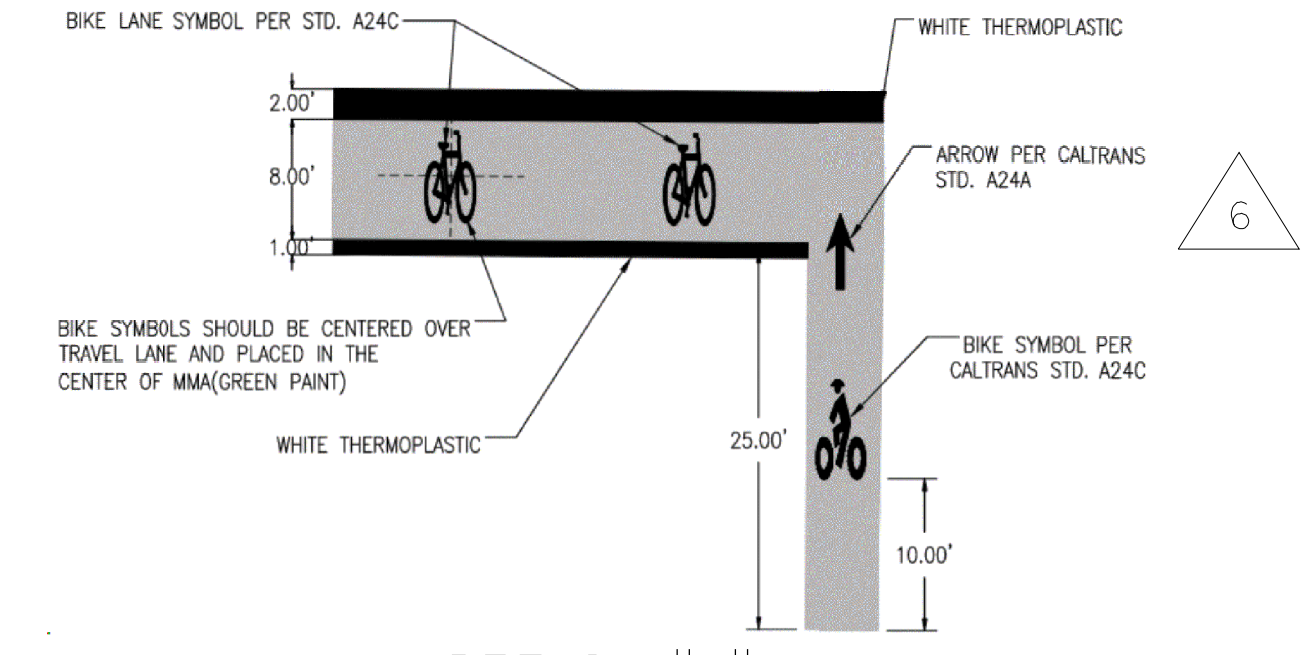
REVIEWED: OFFICE ENG. **SIGNED 06/17/2021**
 DATE: 06/17/2021
 SCALE: 1"=40'

PW FILE NO. _____
 PROJ. ID. _____
 FUND NO. _____
 ORG. NO. _____

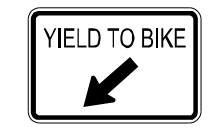
DR. BY: _____ SHEET NO. 43
 CH. BY: _____ OF 102 SHEETS
 DATE: _____
 SCALE: 1"=40' PD-005-BEL

NOTES

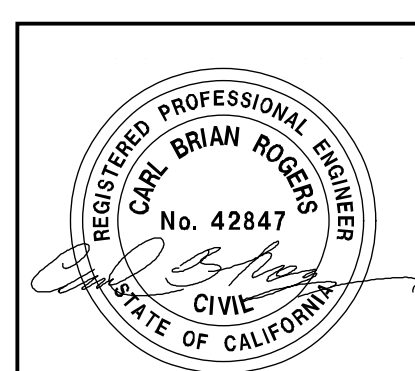
1. SEE DRAWING PD-001-BEL FOR GENERAL NOTES AND LEGEND



W4(SPECIAL) *



R4(SPECIAL) *



REGISTERED PROF. ENGINEER CERTIFIES REVISION 7 ONLY

MINOR FCN 832 - SEE SHEET ATTACHED FOR CONSTRUCTION INFORMATION

REV	DATE	BY	CHK	APP	DESCRIPTION
7	02/15/24	TH	CR	CR	FCN 581 REV 1 - CITY COMMENTS
6	10/26/23	FM	WW	CR	FCN 581
5	03/02/23	FM	WW	SB	DCN 268 - CITY COMMENTS
4	12/21/22	FM	WW	SB	DCN 268
3	05/27/20	MT	JN	SB	READY FOR CONSTRUCTION - CITY COMMENTS

DESIGNED BY M. MOHRMAN
 DRAWN BY O. MEHRDEL
 CHECKED BY R. PATEL
 IN CHARGE J. AVITIA
 DATE 11/16/20

Tutor Perini
ZACHRY
PARSONS
 A joint venture

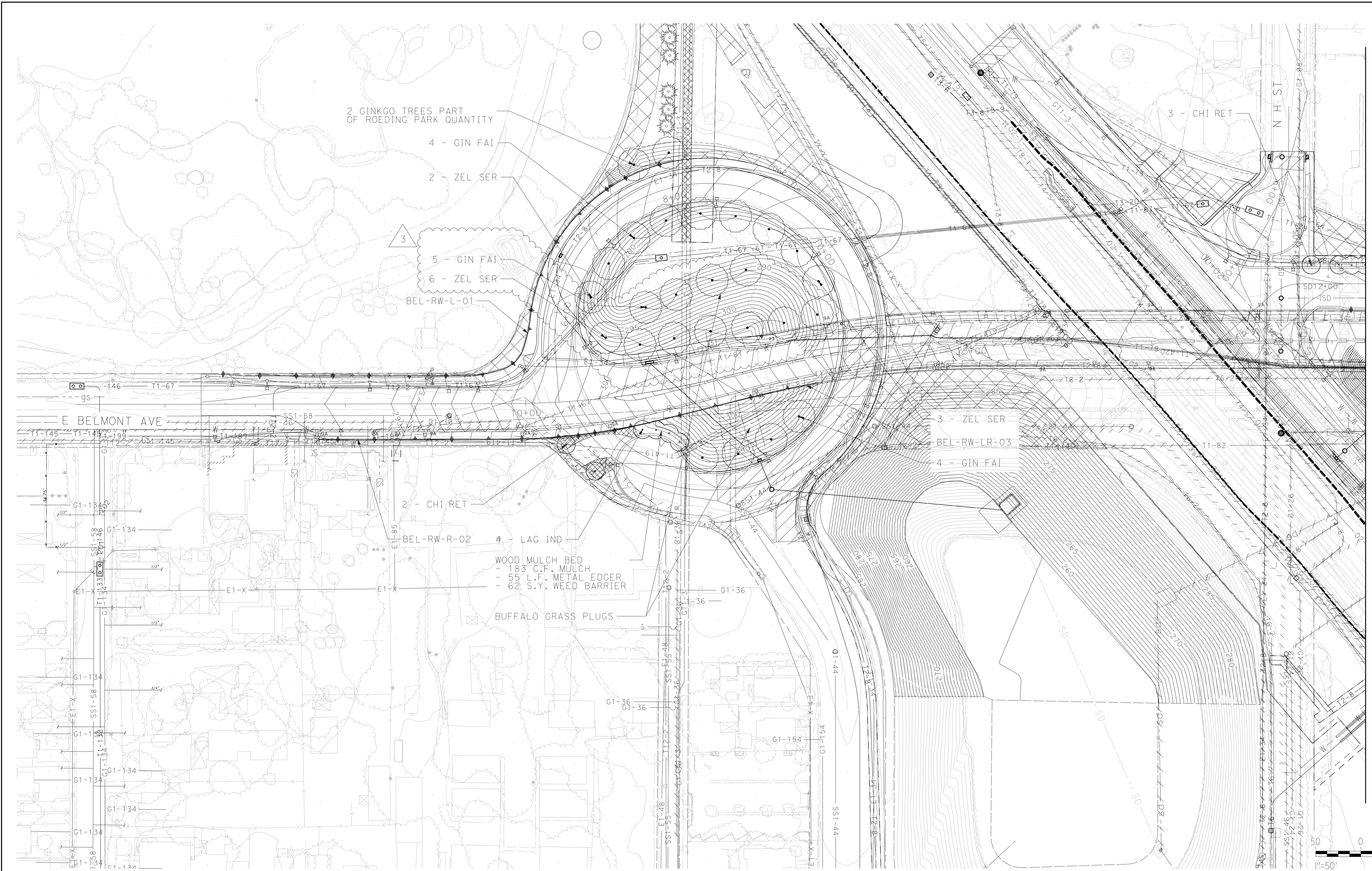
CONSULTANT
 TP2P, A Joint Venture
 1401 Fallon St.
 Suite 400
 Fresno, California 93721
 Tel. (559) 385-7025

CITY OF FRESNO DEPARTMENT OF PUBLIC WORKS
 CALIFORNIA HIGH-SPEED TRAIN PROJECT
 FINAL FACILITY PLANS
 WEST BELMONT AVENUE GRADE SEPARATION
 PAVEMENT DELINEATION AND SIGN PLAN
 SHEET 6 OF 6

REVIEWED: _____ CITY ENG. _____
 OFFICE ENG. _____
 DR. BY: _____ SHEET NO. 44
 CH. BY: _____ OF 102 SHEETS
 DATE: _____
 SCALE: 1"=40' PD-006-BEL

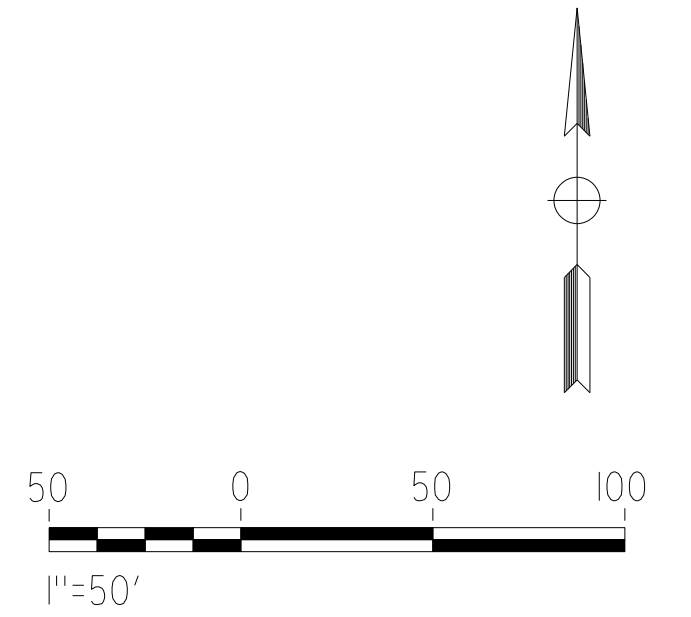
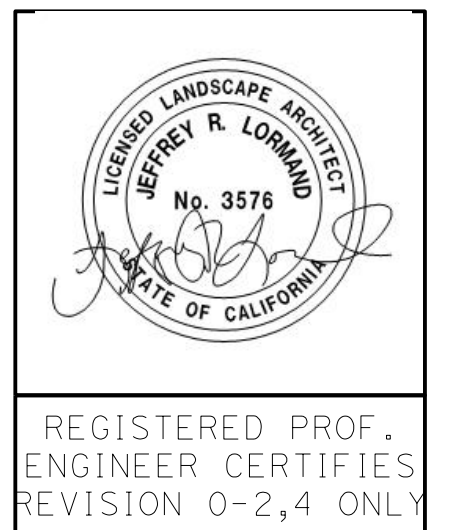
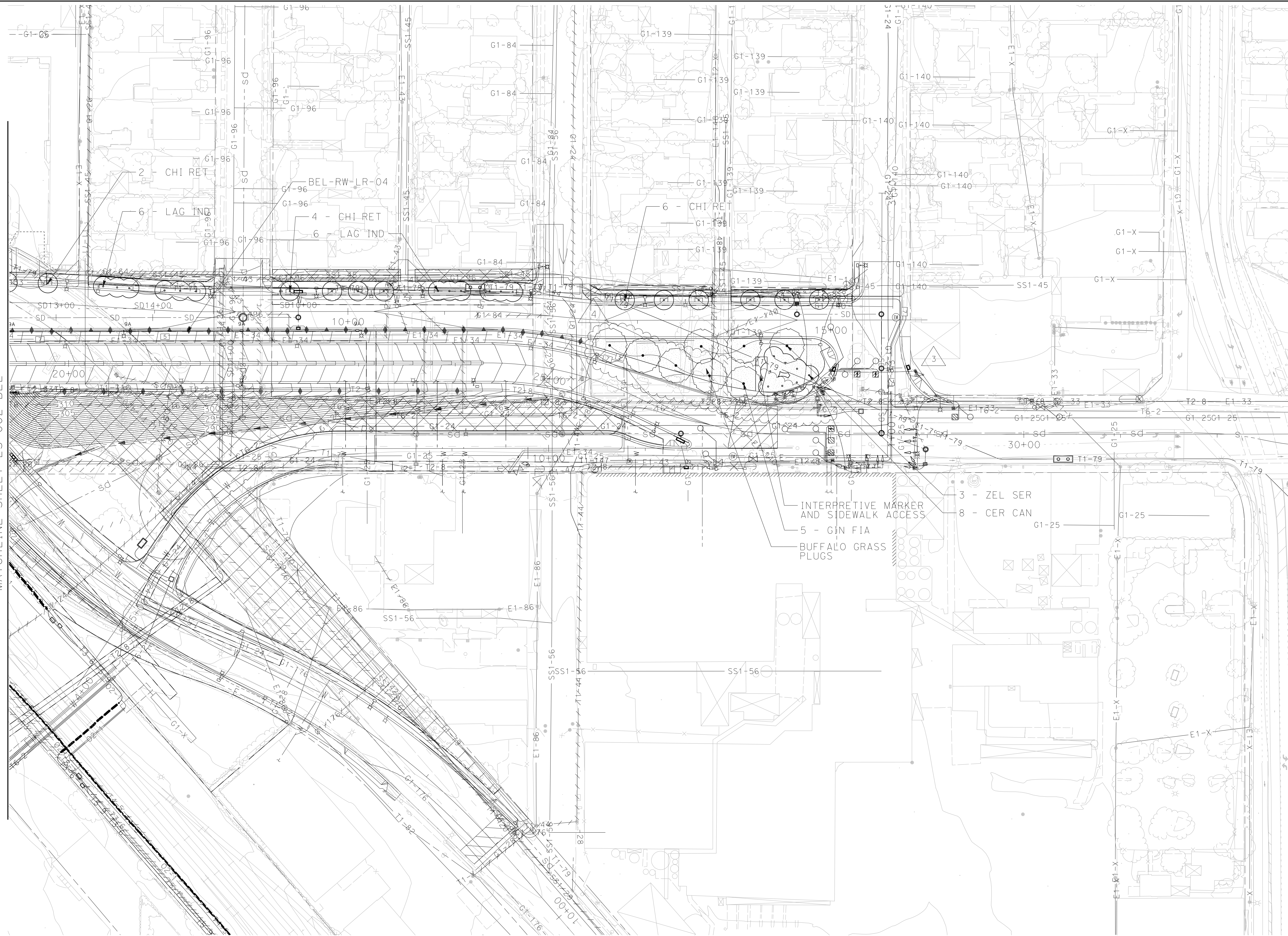
pwt:\xp1002pwint01.parsons.com\california state\documents\CHSTP_CPI\105 - Design\CADD\Sheet Files\Civil\114 - W Belmont Avenue\CPI-CV-PD003-BEL.dgn
 1/31/2024 4:00:08 PM CAHSRP_half.tbl CHSR_PDF_full_block.plt c:\pw_working\california\parsons_b004398k\dms12453\CPI-CV-PD006-BEL.dgn

pw:\1\p1002pwint01.parsons.com\California State\Documents\CHSTP_CP1_N05 - Design\User Files\PARSONS\Jon.Christensen\LANDSCAPING\SHEETS\KeyMap.dgn
 5/21/2025 2:38:44 PM CAHSRP_half.tbl CHSR_PDF_half.ctb c:\pw_working\california\p0038170\d0105008\Sheet14.dgn



pw:\1\p102pwint01.parsons.com\California State\Documents\CHSTP_CP1_N05 - Design\User Files\PARSONS\Jon.Christiansen\LANDSCAPING\SHEETS\KeyMap.dgn
 5/21/2025 2:42:43 PM CAHSRP_half.tbl CHSR_PDF_full_block.plt c:\pw_working\california\p0038170\0105008\Sheet15.dgn

MATCHLINE SHEET LS-002-BEL



REV	DATE	BY	CHK	APP	DESCRIPTION
4	05/16/25	RM	SR	JL	FCN 914
3	06/27/22	CR	JM	SB	DCN 268
2	05/18/20	JMP	PN	JL	READY FOR CONSTRUCTION - CITY COMMENTS
1	01/10/20	JM	PN	JL	READY FOR CONSTRUCTION - CITY COMMENTS
0	06/01/18	JM	PN	JL	READY FOR CONSTRUCTION

DESIGNED BY
S. ROZENDAAL
 DRAWN BY
J. McDONALD
 CHECKED BY
P. NIKOLAI
 IN CHARGE
J. LORMAND
 DATE



CONSULTANT
 TP2P, A Joint Venture
 1401 Fulton St.
 Suite 400
 Fresno, California 93721
 Tel. (559) 385-7025

PW FILE NO.
 PROJ. ID.
 FUND NO.
 ORG. NO.

CITY OF FRESNO DEPARTMENT OF PUBLIC WORKS CALIFORNIA HIGH-SPEED TRAIN PROJECT FINAL FACILITY PLANS E. BELMONT AVE. PLANTING PLAN 2 OF 2		REVIEWED: _____ CITY ENG. _____ DR. BY: _____ SHEET NO. 93 CH. BY: _____ OF 102 SHEETS DATE: _____ SCALE: _____ LS-003-BEL
---	--	---