

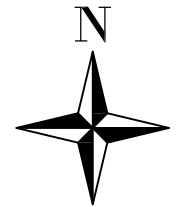


PUBLIC WORKS DEPARTMENT

TRAFFIC AND ENGINEERING SERVICES DIVISION

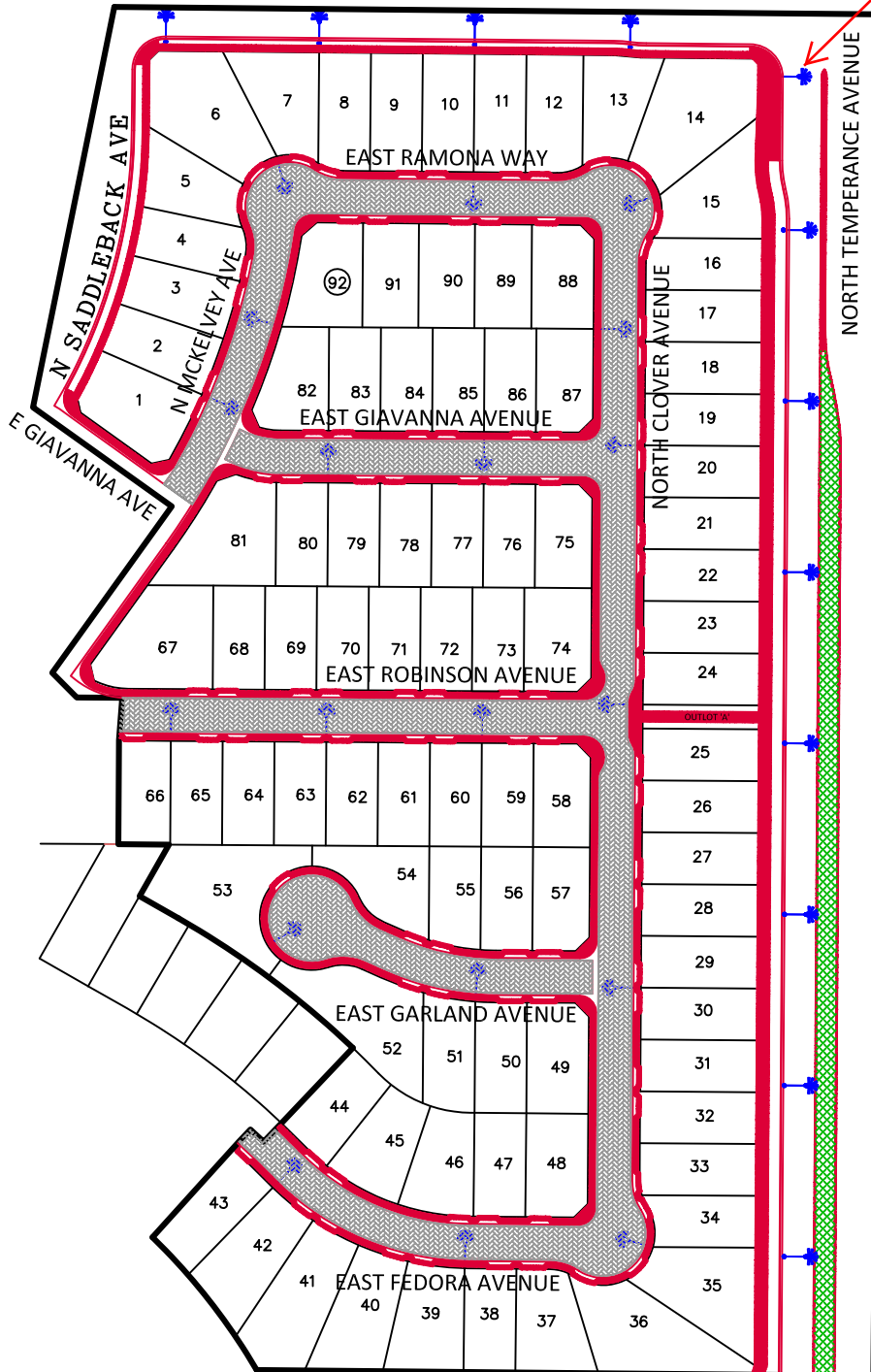
FEATURES TO BE ADDED BY ANNEXATION NO. 89

COMMUNITY FACILITIES DISTRICT NO. 11

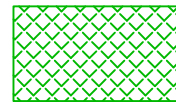


NOT TO SCALE
July 6, 2018

FINAL TRACT MAP NO. 6216, PHASE III OF VTM 5571 (T5571 PHASE I, T6163 PHASE II)



LANDSCAPE AND IRRIGATION:



HALF MEDIAN = 9,037 SF

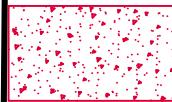
LARGE TREES = 21 EA

SMALL TREES = 8 EA



INTERIOR PAVEMENT:

TOTAL AREA = 107,946 SF



CONCRETE IMPROVEMENTS:

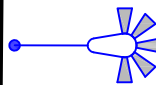
CURB & GUTTER = 8,862 LF

VALLEY GUTTER = 654 SF

SIDEWALK & CURB RAMPS = 44,489 SF

MEDIAN CAPPING = 672 SF

MEDIAN MAINTENANCE BAND = 988 SF



STREET LIGHTS:

TOTAL = 29 EACH

(28 - Local LED, 1 Safety,
1 Safety on Signal)