



Proposal For:	Fresno Area Express (FAX)
Proposed Bus:	Endera E450
Proposed Layout:	Endera 8+4 or 12+2

Prepared By:	Rob Goolsby
Phone:	206-445-8591
Email:	rob@nwbus.com

Thank you for the opportunity to provide you with a quote for a new Endera Shuttle Bus. Northwest Bus Sales aims to be the most competitively priced provider of quality buses and vans, but where we really shine is in our support- both during and after the sale. To follow, you will find our proposal for your custom-built bus. We appreciate your business and look forward to working with you on this purchase.



Founded in Washington in 1987, Northwest Bus Sales has been a family-owned and locally-operated dealership for 35+ years. Our eight-person sales team has a combined 80+ years of experience, with a highly diverse skill set. Several members of our sales department have prior experience in the repair and operation of commercial vehicles, giving them a unique and beneficial insight into the day-to-day operational requirements of the buses we sell and an ability to troubleshoot and train on many technical issues. Northwest Bus Sales' parts and service department has direct lines of communications with each of our manufacturers. All calls will be answered or returned within 1 hour during business hours. Northwest Bus Sales prides itself on customer satisfaction and looks forward to sharing this experience with you!



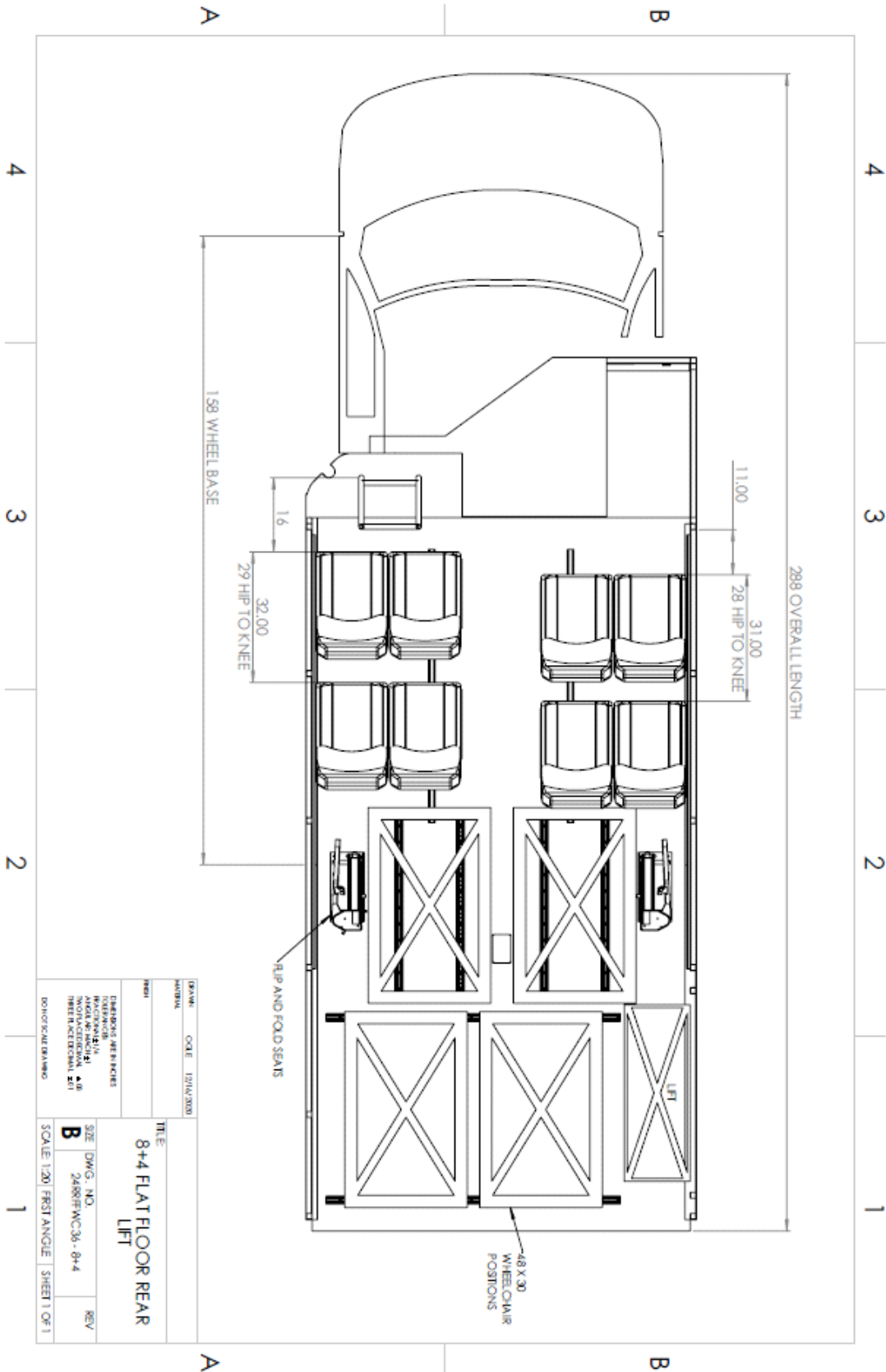
Quote

3/26/2025

Prepared By:
Northwest Bus Sales
Rob Goolsby
206-445-8591
rob@nwbus.com
33207 Pacific Highway S.
Federal Way, WA 98003

Prepared For:
Fresno Area Express (FAX)
Blake Rincon
559-621-1467
blake.rincon@fresno.gov
2223 G St.
Fresno, CA 93706

Endera 8+4 or 12+2			
Qty	Description	Price	Extended
1	WA 06719 Spec Endera E450 12+2	\$66,997	\$66,997
1	Flat floor extending to passenger boarding area	\$956	\$956
1	Spare tire and rim	\$500	\$500
1	Exterior weather-proof passenger door entry switch	\$169	\$169
1	Delete upper T-slider feature	-\$3,730	-\$3,730
1	Custom graphics per attached layout	\$6,500	\$6,500
1	Delete driver's Running Board	-\$97	-\$97
1	Entry door wired "hot" at all times	\$0	\$0
1	Master power switch to completely shut off all power to body accessories	\$178	\$178
1	Battery box for auxiliary circuits with two auxiliary batteries, with isolator	\$313	\$313
1	Air Conditioning 105,000 BTU	\$1,355	\$1,355
1	Lift door ajar light on dash w/audible alarm	\$158	\$158
1	Driver's partitions - upper Plexiglas panel behind driver	\$194	\$194
1	Additional ceiling grab rail	\$161	\$161
1	Fresnel (fish-eye) lens on rear window	\$44	\$44
-2	Double Passenger Seat, Freedman Featherweight Mid-High	\$295	-\$590
2	Double foldaway seat, Non-Retractable Belt, Notchback	\$675	\$1,350
4	Underseat Retractable Seat Belts	\$80	\$320
6	Anti-Vandal Grab Handles	\$34	\$203
6	Arm rest (per seat)	\$24	\$143
2	Additional wheelchair station including securements.	\$689	\$1,378
4	Storage pouches for wheelchair securements	\$60	\$240
1	Lift, Braun 1000#	\$900	\$900
1	Yellow step nosings and standee line	\$0	\$0
2365	Miles From Ottawa, OH @ \$1.30 +\$300 Pickup Charge		\$3,375
1	PPI Increase	91.00%	\$73,723
Price available to Washington MCUA participants and agencies of states with cooperative agreements		Subtotal	\$154,737
Dealer Credit valid for 30 days, then subject to adjustment		Dealer Credit	-\$23,800
***Sales tax waived with proof of exemption		Adjusted Price	\$130,937
Pricing subject to additional PPI increases		Quantity	9
DES Authorization and purchase order required to process order		Trade Allowance	\$0
Change orders must be submitted in writing and are not official until confirmed		Subtotal	\$1,178,430
		Sales Tax***	\$0
		Licensing	
THANK YOU FOR THE OPPORTUNITY TO EARN YOUR BUSINESS!		TOTAL PRICE	\$1,178,430



DATE	12/14/2020	TITLE	8+4 FLAT FLOOR REAR LIFT
DRAWN		BY	
CHECKED		DATE	
REVISIONS		SIZE	DWG. NO.
1. REVISED		2488FWC36-8+4	REV
2. REVISED			
3. REVISED			
4. REVISED			
5. REVISED			
6. REVISED			
7. REVISED			
8. REVISED			
9. REVISED			
10. REVISED			
11. REVISED			
12. REVISED			
13. REVISED			
14. REVISED			
15. REVISED			
16. REVISED			
17. REVISED			
18. REVISED			
19. REVISED			
20. REVISED			
21. REVISED			
22. REVISED			
23. REVISED			
24. REVISED			
25. REVISED			
26. REVISED			
27. REVISED			
28. REVISED			
29. REVISED			
30. REVISED			
31. REVISED			
32. REVISED			
33. REVISED			
34. REVISED			
35. REVISED			
36. REVISED			
37. REVISED			
38. REVISED			
39. REVISED			
40. REVISED			
41. REVISED			
42. REVISED			
43. REVISED			
44. REVISED			
45. REVISED			
46. REVISED			
47. REVISED			
48. REVISED			
49. REVISED			
50. REVISED			
51. REVISED			
52. REVISED			
53. REVISED			
54. REVISED			
55. REVISED			
56. REVISED			
57. REVISED			
58. REVISED			
59. REVISED			
60. REVISED			
61. REVISED			
62. REVISED			
63. REVISED			
64. REVISED			
65. REVISED			
66. REVISED			
67. REVISED			
68. REVISED			
69. REVISED			
70. REVISED			
71. REVISED			
72. REVISED			
73. REVISED			
74. REVISED			
75. REVISED			
76. REVISED			
77. REVISED			
78. REVISED			
79. REVISED			
80. REVISED			
81. REVISED			
82. REVISED			
83. REVISED			
84. REVISED			
85. REVISED			
86. REVISED			
87. REVISED			
88. REVISED			
89. REVISED			
90. REVISED			
91. REVISED			
92. REVISED			
93. REVISED			
94. REVISED			
95. REVISED			
96. REVISED			
97. REVISED			
98. REVISED			
99. REVISED			
100. REVISED			

SCALE: 1/2" = 1'-0" FIRST ANGLE SHEET 1 OF 1