



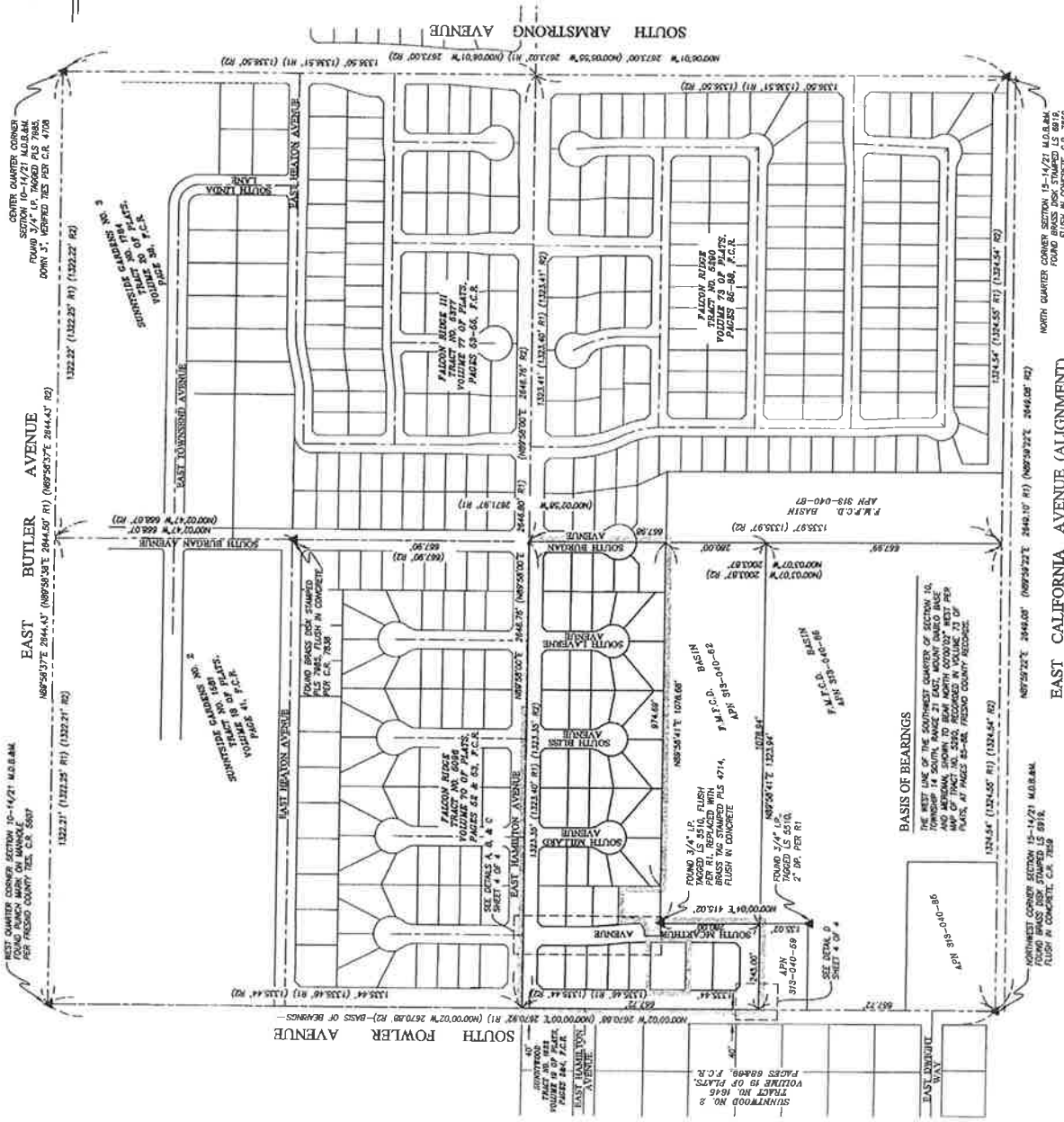
# FINAL MAP OF TRACT NO. 5626

GENUINE A SUBDIVISION OF A PORTION OF THE NORTH HALF OF THE SOUTHWEST QUARTER SECTION 15-14-21 ALD.B.M. TOWNSHIP 14 SOUTH, RANGE 21 EAST, MOUNT Diablo BASE AND MERIDIAN IN THE CITY OF FRESNO, COUNTY OF FRESNO, STATE OF CALIFORNIA SURVEYED AND PLATTED IN NOVEMBER 2005 BY QUAD KNOPF INC.

CONSISTING OF 4 SHEETS SHEET 2 OF 4

## LEGEND

- ▲ MONUMENT FOUND AND ACCEPTED AS DESCRIBED, UNLESS NOTED OTHERWISE
- (R1) RECORD DATA PER RECORD OF SURVEY RECORDED IN BOOK 38 OF RECORD OF SURVEYS AT PAGE 15, FRESNO COUNTY RECORDS, OR CALCULATED THEREFROM
- (R2) RECORDED AND MEASURED DATA PER THE FINAL MAP OF TRACT NO. 5090 RECORDED IN BOOK 38 OF RECORD OF SURVEYS AT PAGES 15-16, FRESNO COUNTY RECORDS, OR CALCULATED THEREFROM
- (R3) RECORD DATA PER BEARING AND DISTANCE OF ANY INTERSECTION NOVEMBER 22, 2004, AS DOCUMENT NO. 2004-024737, FRESNO COUNTY RECORDS
- C.R. CORNER RECORD ON FILE WITH THE FRESNO COUNTY SURVEYOR
- F.C.R. FRESNO COUNTY RECORDS
- F.M.F.C.D. FRESNO METROPOLITAN FLOOD CONTROL DISTRICT
- I.P. IRON PIPE
- O.R.F.C. OFFICIAL RECORDS OF FRESNO COUNTY
- M.D.B.M. MOUNT Diablo BASE AND MERIDIAN
- BLUE BORDER INDICATES LIMITS OF SUBDIVISION
- SECTION LINE
- ROAD CENTERLINE
- EASEMENT LINE



QUAD KNOPF FRESNO OFFICE  
 2000 N. VAN SICKLE STREET  
 FRESNO, CA 93711  
 TEL: (559) 438-3444  
 FAX: (559) 438-3444  
 WEBSITE: WWW.QUADKNOPF.COM

EAST CALIFORNIA AVENUE (ALIGNMENT)  
 NORTH QUARTER CORNER SECTION 15-14-21 ALD.B.M. FLUSH N CONCRETE, C.R. 7810

SOUTH QUARTER CORNER SECTION 15-14-21 ALD.B.M. FLUSH N CONCRETE, C.R. 7810

EAST BUTLER AVENUE  
 WEST QUARTER CORNER SECTION 15-14-21 ALD.B.M. FLUSH N CONCRETE, C.R. 7810

FILE NAME: L:\Projects\2007\070407\ACAD\Plot Map\070407-PM.dwg - LAST SAVE: 7/23/2015 2:58:16 PM PDT

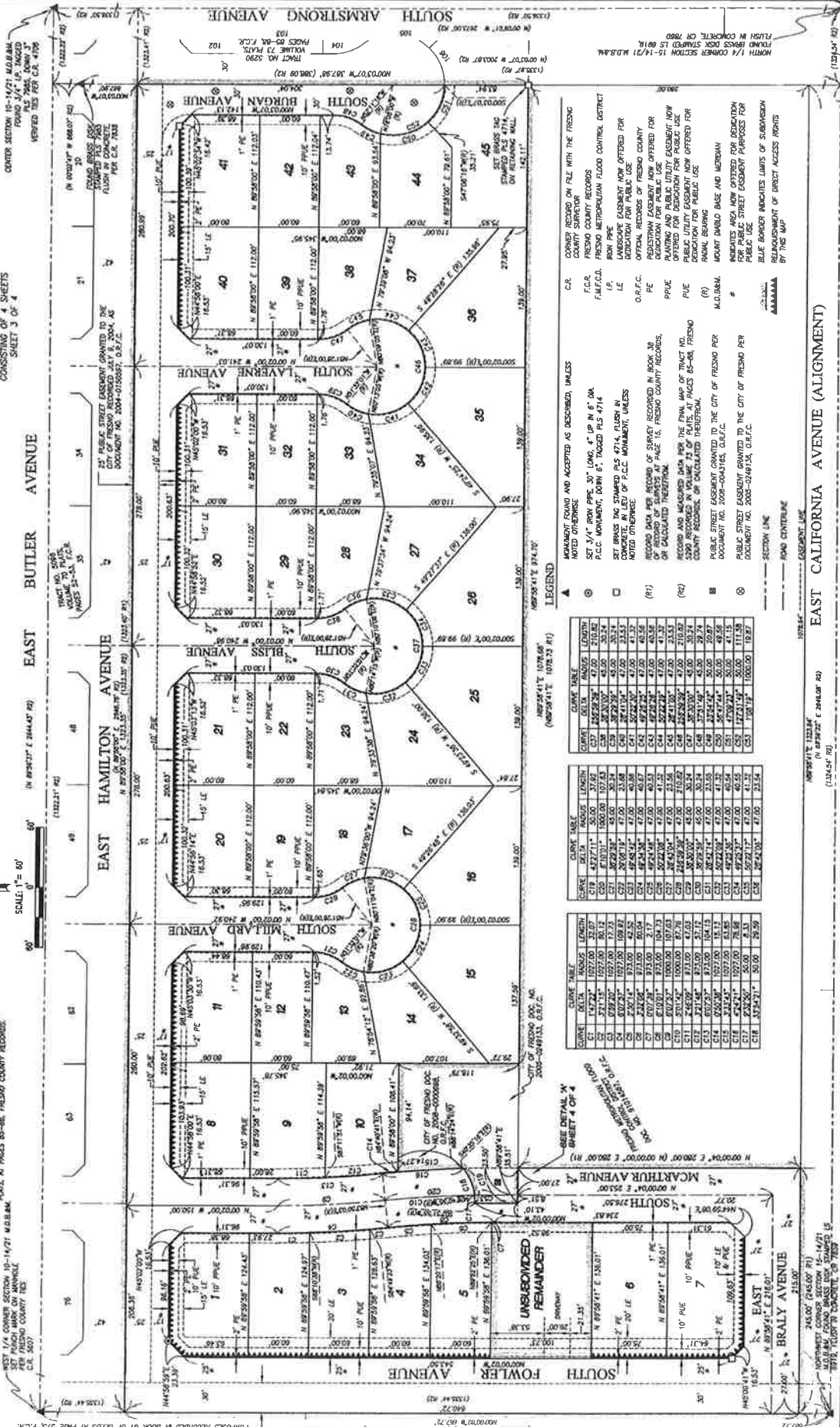
# FINAL MAP OF TRACT NO. 5626

IN THE CITY OF FRESNO, COUNTY OF FRESNO, STATE OF CALIFORNIA  
SURRENDERED AND PLATED IN NOVEMBER 2005 BY GOOD KNIPP INC.  
CONSISTING OF 4 SHEETS  
SHEET 3 OF 4

BEING A SUBDIVISION OF A PORTION OF THE NORTH HALF OF THE  
SOUTHWEST QUARTER OF THE SOUTHWEST QUARTER OF SECTION 10,  
TOWNSHIP 14 SOUTH, RANGE 21 EAST, MOUNT Diablo BASE AND MERIDIAN

**NOTES:**  
1. SET 3/4" BY 30" MON PPE, 4" BELOW SURFACE.  
2. MONUMENTS SHALL BE SET AT ALL LOT CORNERS, BEGINNING AND  
ENDING POINTS OF CURVES, AND AT ALL POINTS OF INTERSECTION,  
UNLESS NOTED OTHERWISE.

**BASIS OF BEARINGS:**  
THE WEST LINE OF THE SOUTHWEST QUARTER OF SECTION 10,  
TOWNSHIP 14 SOUTH, RANGE 21 EAST, MOUNT Diablo BASE  
AND MERIDIAN IS THE BASIS OF BEARINGS FOR THIS MAP.  
ALL BEARINGS AND DISTANCES ARE TO BE TAKEN FROM THE  
MAP OF TRACT NO. 5626, FRESNO COUNTY RECORDS,  
PAGE 47, PAGES 85-86.



- LEGEND**
- ▲ MONUMENT FOUND AND ACCEPTED AS DESCRIBED, UNLESS NOTED OTHERWISE.
  - SET 3/4" MON PPE, 30" LONG, 4" UP IN 6" DIA. P.C.C. MONUMENT, DOWN 6", TACED PLS 4714.
  - SET BRASS TAG STAMPED PLS 4714, FLUSH IN MONUMENT, IN LIEU OF P.C.C. MONUMENT, UNLESS NOTED OTHERWISE.
  - (R1) RECORD DATA FROM RECORDS OF SURVEY RECORDED IN BOOK 38 OF FRESNO COUNTY RECORDS, PAGE 15, FRESNO COUNTY RECORDS, ON CALCULATED THEORETICAL.
  - (R2) RECORDS AND MEASURED DATA FOR THE FINAL MAP OF TRACT NO. 5626 RECORDED IN VOLUME 72 OF PLATS, AT PAGES 65-66, FRESNO COUNTY RECORDS, AS CALCULATED THEORETICAL.
  - PUBLIC STREET EASEMENT GRANTED TO THE CITY OF FRESNO PER DOCUMENT NO. 2008-064615, D.E.C.
  - ⊙ PUBLIC STREET EASEMENT GRANTED TO THE CITY OF FRESNO PER DOCUMENT NO. 2008-024615X, D.O.R.F.C.

**CURVE TABLE**

CURVE	DELTA	RADIUS	LENGTH
C1	47.7711°	50.00	37.68
C2	87.1031°	1000.00	107.43
C3	80.2938°	45.00	30.74
C4	80.2938°	45.00	30.74
C5	47.7711°	50.00	37.68
C6	47.7711°	50.00	37.68
C7	47.7711°	50.00	37.68
C8	47.7711°	50.00	37.68
C9	47.7711°	50.00	37.68
C10	47.7711°	50.00	37.68
C11	47.7711°	50.00	37.68
C12	47.7711°	50.00	37.68
C13	47.7711°	50.00	37.68
C14	47.7711°	50.00	37.68
C15	47.7711°	50.00	37.68
C16	47.7711°	50.00	37.68
C17	47.7711°	50.00	37.68
C18	47.7711°	50.00	37.68
C19	47.7711°	50.00	37.68
C20	47.7711°	50.00	37.68
C21	47.7711°	50.00	37.68
C22	47.7711°	50.00	37.68
C23	47.7711°	50.00	37.68
C24	47.7711°	50.00	37.68
C25	47.7711°	50.00	37.68
C26	47.7711°	50.00	37.68
C27	47.7711°	50.00	37.68
C28	47.7711°	50.00	37.68
C29	47.7711°	50.00	37.68
C30	47.7711°	50.00	37.68
C31	47.7711°	50.00	37.68
C32	47.7711°	50.00	37.68
C33	47.7711°	50.00	37.68
C34	47.7711°	50.00	37.68
C35	47.7711°	50.00	37.68
C36	47.7711°	50.00	37.68
C37	47.7711°	50.00	37.68
C38	47.7711°	50.00	37.68
C39	47.7711°	50.00	37.68
C40	47.7711°	50.00	37.68
C41	47.7711°	50.00	37.68
C42	47.7711°	50.00	37.68
C43	47.7711°	50.00	37.68
C44	47.7711°	50.00	37.68
C45	47.7711°	50.00	37.68
C46	47.7711°	50.00	37.68
C47	47.7711°	50.00	37.68
C48	47.7711°	50.00	37.68
C49	47.7711°	50.00	37.68
C50	47.7711°	50.00	37.68
C51	47.7711°	50.00	37.68
C52	47.7711°	50.00	37.68
C53	47.7711°	50.00	37.68
C54	47.7711°	50.00	37.68
C55	47.7711°	50.00	37.68
C56	47.7711°	50.00	37.68
C57	47.7711°	50.00	37.68
C58	47.7711°	50.00	37.68
C59	47.7711°	50.00	37.68
C60	47.7711°	50.00	37.68
C61	47.7711°	50.00	37.68
C62	47.7711°	50.00	37.68
C63	47.7711°	50.00	37.68
C64	47.7711°	50.00	37.68
C65	47.7711°	50.00	37.68
C66	47.7711°	50.00	37.68
C67	47.7711°	50.00	37.68
C68	47.7711°	50.00	37.68
C69	47.7711°	50.00	37.68
C70	47.7711°	50.00	37.68
C71	47.7711°	50.00	37.68
C72	47.7711°	50.00	37.68
C73	47.7711°	50.00	37.68
C74	47.7711°	50.00	37.68
C75	47.7711°	50.00	37.68
C76	47.7711°	50.00	37.68
C77	47.7711°	50.00	37.68
C78	47.7711°	50.00	37.68
C79	47.7711°	50.00	37.68
C80	47.7711°	50.00	37.68
C81	47.7711°	50.00	37.68
C82	47.7711°	50.00	37.68
C83	47.7711°	50.00	37.68
C84	47.7711°	50.00	37.68
C85	47.7711°	50.00	37.68
C86	47.7711°	50.00	37.68
C87	47.7711°	50.00	37.68
C88	47.7711°	50.00	37.68
C89	47.7711°	50.00	37.68
C90	47.7711°	50.00	37.68
C91	47.7711°	50.00	37.68
C92	47.7711°	50.00	37.68
C93	47.7711°	50.00	37.68
C94	47.7711°	50.00	37.68
C95	47.7711°	50.00	37.68
C96	47.7711°	50.00	37.68
C97	47.7711°	50.00	37.68
C98	47.7711°	50.00	37.68
C99	47.7711°	50.00	37.68
C100	47.7711°	50.00	37.68

**CURVE TABLE**

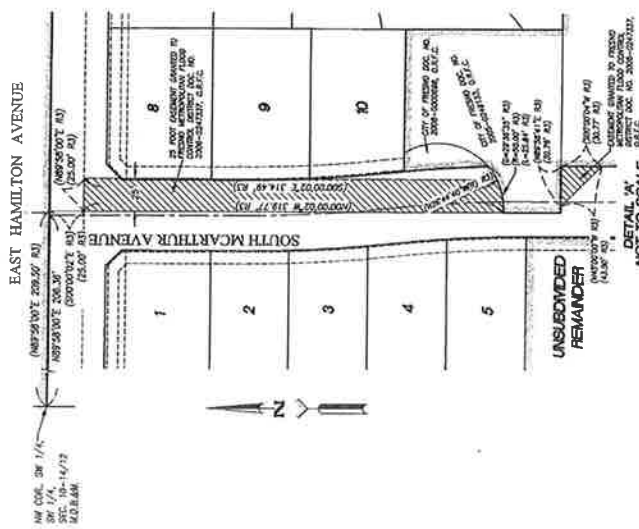
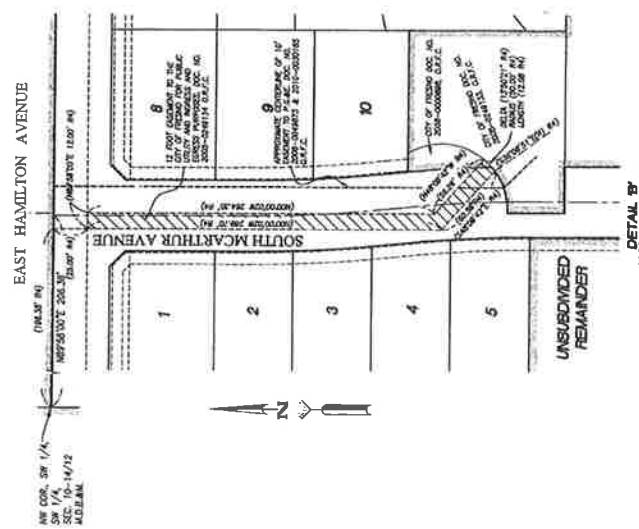
CURVE	DELTA	RADIUS	LENGTH
C1	47.7711°	50.00	37.68
C2	87.1031°	1000.00	107.43
C3	80.2938°	45.00	30.74
C4	80.2938°	45.00	30.74
C5	47.7711°	50.00	37.68
C6	47.7711°	50.00	37.68
C7	47.7711°	50.00	37.68
C8	47.7711°	50.00	37.68
C9	47.7711°	50.00	37.68
C10	47.7711°	50.00	37.68
C11	47.7711°	50.00	37.68
C12	47.7711°	50.00	37.68
C13	47.7711°	50.00	37.68
C14	47.7711°	50.00	37.68
C15	47.7711°	50.00	37.68
C16	47.7711°	50.00	37.68
C17	47.7711°	50.00	37.68
C18	47.7711°	50.00	37.68
C19	47.7711°	50.00	37.68
C20	47.7711°	50.00	37.68
C21	47.7711°	50.00	37.68
C22	47.7711°	50.00	37.68
C23	47.7711°	50.00	37.68
C24	47.7711°	50.00	37.68
C25	47.7711°	50.00	37.68
C26	47.7711°	50.00	37.68
C27	47.7711°	50.00	37.68
C28	47.7711°	50.00	37.68
C29	47.7711°	50.00	37.68
C30	47.7711°	50.00	37.68
C31	47.7711°	50.00	37.68
C32	47.7711°	50.00	37.68
C33	47.7711°	50.00	37.68
C34	47.7711°	50.00	37.68
C35	47.7711°	50.00	37.68
C36	47.7711°	50.00	37.68
C37	47.7711°	50.00	37.68
C38	47.7711°	50.00	37.68
C39	47.7711°	50.00	37.68
C40	47.7711°	50.00	37.68
C41	47.7711°	50.00	37.68
C42	47.7711°	50.00	37.68
C43	47.7711°	50.00	37.68
C44	47.7711°	50.00	37.68
C45	47.7711°	50.00	37.68
C46	47.7711°	50.00	37.68
C47	47.7711°	50.00	37.68
C48	47.7711°	50.00	37.68
C49	47.7711°	50.00	37.68
C50	47.7711°	50.00	37.68
C51	47.7711°	50.00	37.68
C52	47.7711°	50.00	37.68
C53	47.7711°	50.00	37.68
C54	47.7711°	50.00	37.68
C55	47.7711°	50.00	37.68
C56	47.7711°	50.00	37.68
C57	47.7711°	50.00	37.68
C58	47.7711°	50.00	37.68
C59	47.7711°	50.00	37.68
C60	47.7711°	50.00	37.68
C61	47.7711°	50.00	37.68
C62	47.7711°	50.00	37.68
C63	47.7711°	50.00	37.68
C64	47.7711°	50.00	37.68
C65	47.7711°	50.00	37.68
C66	47.7711°	50.00	37.68
C67	47.7711°	50.00	37.68
C68	47.7711°	50.00	37.68
C69	47.7711°	50.00	37.68
C70	47.7711°	50.00	37.68
C71	47.7711°	50.00	37.68
C72	47.7711°	50.00	37.68
C73	47.7711°	50.00	37.68
C74	47.7711°	50.00	37.68
C75	47.7711°	50.00	37.68
C76	47.7711°	50.00	37.68
C77	47.7711°	50.00	37.68
C78	47.7711°	50.00	37.68
C79	47.7711°	50.00	37.68
C80	47.7711°	50.00	37.68
C81	47.7711°	50.00	37.68
C82	47.7711°	50.00	37.68
C83	47.7711°	50.00	37.68
C84	47.7711°	50.00	37.68
C85	47.7711°	50.00	37.68
C86	47.7711°	50.00	37.68
C87	47.7711°	50.00	37.68
C88	47.7711°	50.00	37.68
C89	47.7711°	50.00	37.68
C90	47.7711°	50.00	37.68
C91	47.7711°	50.00	37.68
C92	47.7711°	50.00	37.68
C93	47.7711°	50.00	37.68
C94	47.7711°	50.00	37.68
C95	47.7711°	50.00	37.68
C96	47.7711°	50.00	37.68
C97	47.7711°	50.00	37.68
C98	47.7711°	50.00	37.68
C99	47.7711°	50.00	37.68
C100	47.7711°	50.00	37.68

**CURVE TABLE**

CURVE	DELTA	RADIUS	LENGTH
C1	47.7711°	50.00	37.68
C2	87.1031°	1000.00	107.43
C3	80.2938°	45.00	30.74
C4	80.2938°	45.00	30.74
C5	47.7711°	50.00	37.68
C6	47.7711°	50.00	37.68
C7	47.7711°	50.00	37.68
C8	47.7711°	50.00	37.68
C9	47.7711°	50.00	37.68
C10	47.7711°	50.00	37.68
C11	47.7711°	50.00	37.68
C12	47.7711°	50.00	37.68
C13	47.7711°	50.00	37.68
C14	47.7711°	50.00	37.68
C15	47.7711°	50.00	37.68
C16	47.7711°	50.00	37.68
C17	47.7711°	50.00	37.68
C18	47.7711°	50.00	37.68
C19	47.7711°	50.00	37.68
C20	47.7711°	50.00	37.68
C21	47.7711°	50.00	37.68
C22	47.7711°	50.00	37.68
C23	47.7711°	50.00	37.68
C24	47.7711°	50.00	37.68
C25	47.7711°	50.00	37.68
C26	47.7711°	50.00	37.68
C27	47.7711°	50.00	37.68
C28	47.7711°	50.00	37.68
C29	47.7711°	50.00	37.68
C30	47.7711°	50.00	37.68
C31	47.7711°	50.00	37.68
C32	47.7711°	50.00	37.68
C33	47.7711°	50.00	37.68
C34	47.7711°	50.00	37.68
C35	47.7711°	50.00	37.68
C36	47.7711°	50.00	37.68
C37	47.7711°	50.00	37.68
C38	47.7711°	50.00	37.68
C39	47.7711°	50.00	37.68
C40	47.7711°	50.00	37.68
C41	47.7711°	50.00	37.68
C42	47.7711°	50.00	37.68
C43	47.7711°	50.00	37.68
C44	47.7711°	50.00	37.68
C45	47.7711°	50.00	37.68
C46	47.7711°	50.00	37.68
C47	47.7711°	50.00	

# FINAL MAP OF TRACT NO. 5626

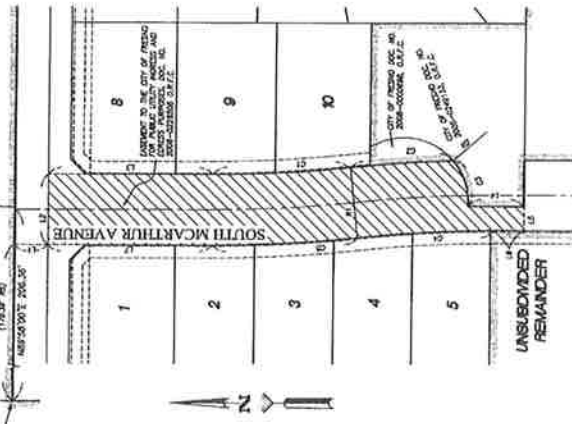
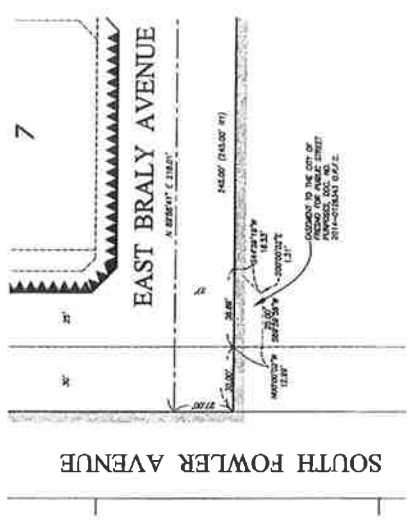
BEING A SUBDIVISION OF A PORTION OF THE NORTH HALF OF THE WESTERLY QUARTER OF THE SOUTHWEST QUARTER OF SECTION 10, TOWNSHIP 14 SOUTH, RANGE 21 EAST, MOUNT Diablo BASE AND MERIDIAN IN THE CITY OF FRESNO, COUNTY OF FRESNO, STATE OF CALIFORNIA SUBMITTED AND PLATED IN NOVEMBER 2005 BY QUAD KNOFF INC. CONSISTING OF 4 SHEETS SHEET 4 OF 4.



- LEGEND**
- (R) RECORD DATA PER DEED OF GIFT DATED OCTOBER 21, 2005, AS DOCUMENT NO. 2005-024814, FRESNO COUNTY RECORDS.
  - (RS) RECORD DATA PER DEED OF GIFT DATED OCTOBER 24, 2005, AS DOCUMENT NO. 2005-024856, FRESNO COUNTY RECORDS.
  - (R3) RECORD DATA PER GRANT OF EASEMENT AND RIGHT OF WAY DATED NOVEMBER 22, 2005, AS DOCUMENT NO. 2005-024237, FRESNO COUNTY RECORDS.
  - O.R.F.C. OFFICIAL RECORDS OF FRESNO COUNTY
  - M.D.B.M. MOUNT Diablo BASE AND MERIDIAN
  - SECTION LINE
  - ROAD CENTERLINE
  - EASEMENT LINE

**BASIS OF BEARINGS**

THE WEST LINE OF THE SOUTHWEST QUARTER OF SECTION 10, TOWNSHIP 14 SOUTH, RANGE 21 EAST, MOUNT Diablo BASE AND MERIDIAN SHOWN TO BEAK NORTH ACCORDING TO THE MAP OF TRACT NO. 2090, RECORDED IN VOLUME 23 OF PLATS, AT PAGES 61-66, FRESNO COUNTY RECORDS.



**DETAIL A'**  
NOT TO SCALE

LINE	BEARING	LENGTH
L1	S. 00°00'00" E.	24.00'
L2	N. 89°58'00" E.	54.00'
L3	S. 00°00'00" E.	24.00'
L4	S. 00°00'00" E.	24.00'
L5	S. 89°58'41" W.	18.66'
L6	N. 00°00'00" E.	24.00'
L7	N. 00°00'00" W.	24.00'

**DETAIL B'**  
NOT TO SCALE

LINE	BEARING	LENGTH
B1	S. 89°58'41" W.	18.66'
B2	N. 00°00'00" E.	24.00'

**DETAIL C'**  
NOT TO SCALE

LINE	BEARING	LENGTH
C1	S. 89°58'41" W.	18.66'
C2	N. 00°00'00" E.	24.00'
C3	S. 00°00'00" E.	24.00'
C4	S. 89°58'41" W.	18.66'
C5	N. 00°00'00" E.	24.00'