

Exhibit K-3
Staff Annotated Materials Submitted by
Applicant For City Council

City Council Hearing:

Consideration of Conditional Use Permit Application No. P22-03906

Approximately 1,941 sq.ft. of floor space.

Approximately 662 sq.ft. of shelving / display area.

Approximately 174 sq.ft. of general market food items.

Approximately 393 sq.ft. of convenience store items (with alcohol)

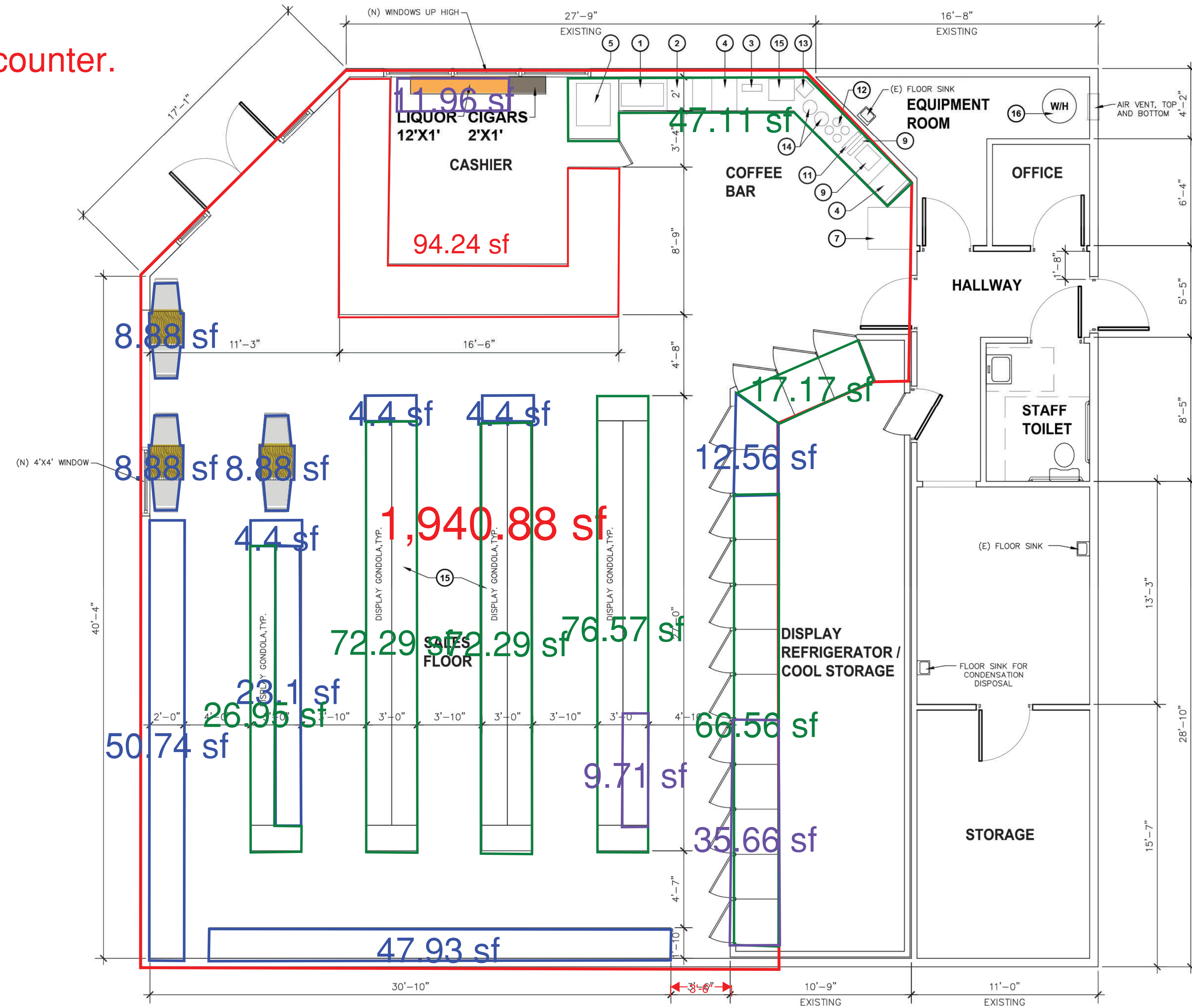
Approximately 58 sq.ft. of alcohol

Approximately 94 sq.ft. of cashier's counter.

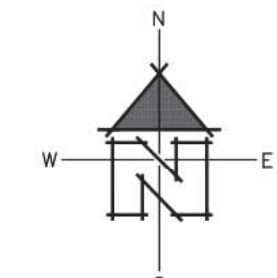
FINISH SCHEDULE																
ROOM NAME	FLOOR		WALL BASE			WALLS						CEILING			REMARKS	
	MAT	FIN	MAT	FIN	HT	NORTH		EAST		SOUTH		WEST		MAT		FIN
CASHIER	PT	FF	PB	FF	4"	GB	P	GB	P	GB	P	GB	P	ACT	FF	9'-0"
SALES FLOOR	PT	FF	PB	FF	4"	GB	P	GB	P	GB	P	GB	P	ACT	FF	9'-0"
COFFEE BAR	PT	FF	PB	FF	4"	GB	P	GB	P	GB	P	GB	P	ACT	FF	9'-0"
OFFICE	PT	FF	WD	FF	4"	GB	P	GB	P	GB	P	GB	P	GB	P	8'-0"
EQUIPMENT ROOM	PT	FF	PB	FF	4"	GB	P	GB	P	GB	P	GB	P	GB	P	8'-0"
HALLWAY	PT	FF	PB	FF	4"	GB	P	GB	P	GB	P	GB	P	GB	P	8'-0"
STAFF TOILET	PT	FF	PB	FF	4"	GB	P	GB	P	GB	P	GB	P	GB	P	8'-0"
DRY STORAGE 1	PT	FF	WD	FF	4"	GB	P	GB	P	GB	P	GB	P	GB	P	8'-0"
DRY STORAGE 2	PT	FF	WD	FF	4"	GB	P	GB	P	GB	P	GB	P	GB	P	8'-0"

ACT	=	2'x4' SUSPENDED ACOUSTICAL TILE CEILING SYSTEM	PB	=	PORCELAN WALL BASE WITH 3/8" COVE RADIUS
FF	=	FACTORY FINISH	PT	=	PORCELAN FLOOR TILE
GB	=	GYPSUM BOARD	WD	=	WOOD WALL BASE
P	=	SEMIGLOSS WHITE PAINT			

- ### KEY NOTES
- NEMCO SLANT ROLLER GRILL
 - PAPA PRIMOS PIZZA DISPLAY
 - GEHL'S 2.0 CHEESE SAUCE DISPENSER (5.25"Wx14.75"Dx21"H) 110V
 - INTERNATIONAL DELIGHT ICED COFFEE MAKER 17.75"Wx23.85Dx23.85"H 110/120V/15 AMP
 - CAFE TANGO FROZEN COFFEE MAKER 24"Wx36"Hx30"D 120V/DEDICATED 20AMPS ELECTRICAL CIRCUIT
 - BLUE BUNNY ICE CREAM BUNKER
 - SUGA' MAE BAKERY DISPLAY CASE (30)
 - FRAZIL & FRAZIL ENERGY DRINK DISPENSER 24"Wx36"Hx30"D 120V/DEDICATED 20 AMPS
 - CAPPUCCINO COFFEE MAKER
 - COFFEE CUP DISPENSER
 - SUGAR AND CREAM DISPENSER
 - ASSORTED COFFEE CONTAINER/DISPENSER (4) 6"DIAx20"H
 - COFFEE MAKER
 - 10"DIAx24" COFFEE CONTAINER/DISPENSER
 - SIDE MOUNTED CHIP RACK
 - EXISTING WHIRLPOOL 50 GALLON TANK, GAS WATER HEATER MODEL No. - NU50T61-403 SERIAL No. - 1408T4552999



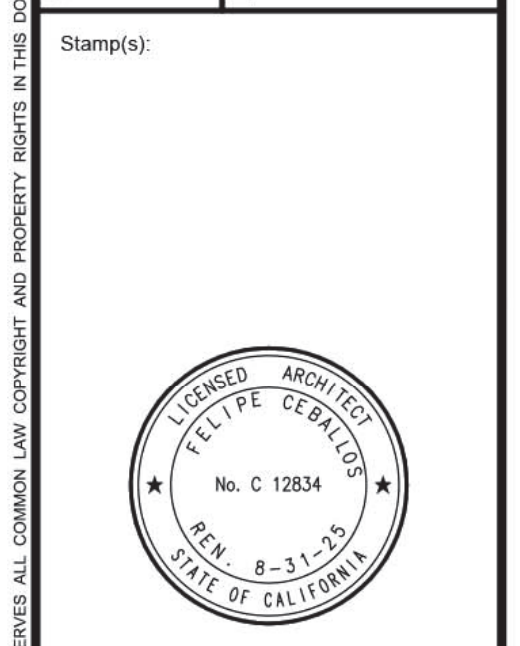
Floor Plan
SCALE: 1/4" = 1' - 0"



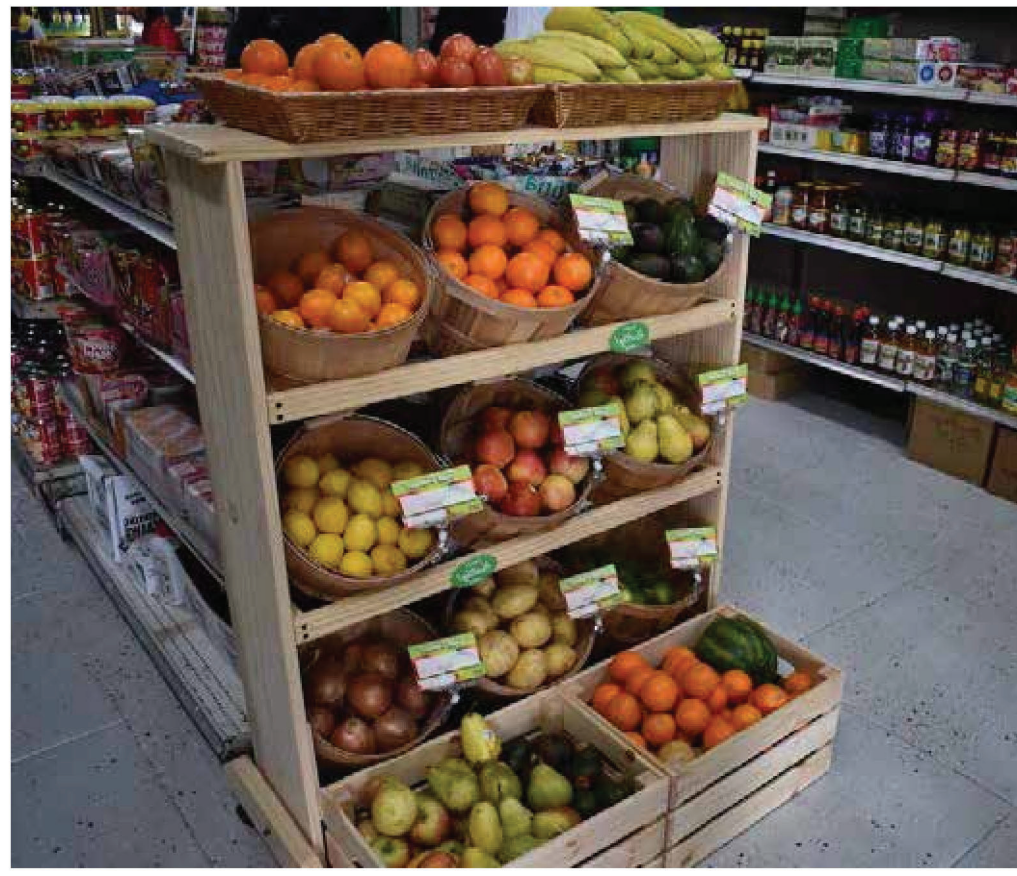
Rev. No.	Rev. Date	Rev. Description
001		
002		
003		
004		
005		
006		
007		
008		
009		
010		

Felipe Ceballos
5714 N. Prospect Avenue
Fresno, California 93711
(559) 408-4888

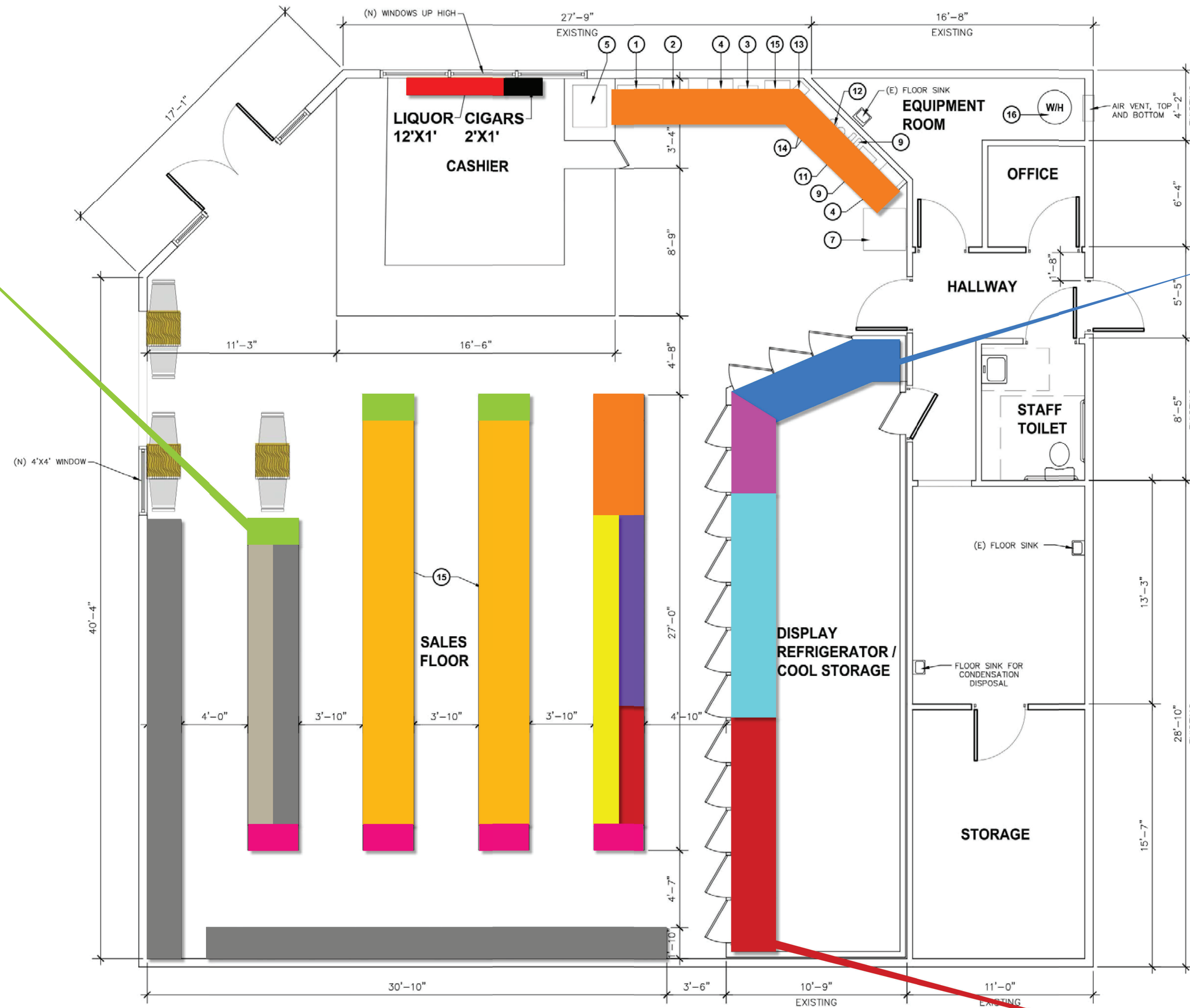
FLOOR PLAN
Circle D Food & Liquor
2520 E. Olive Avenue
Fresno, CA 93701
(559) 498-0710



Job No.:
Sheet No.:
A-2
Release Date:



PROPOSED GONDOLAS FOR FRESH PRODUCE



ON-THE-GO COLD FOOD SELECTION AREA



COLD BEER AREA

FLOOR PLAN DETAILS

- PRE-PACKAGED SNACKS
- VARIETY OF END AISLE ITEMS
- PRE-PACKAGED BAKED GOODS
- HOUSEHOLD ITEMS
- FRESH PRODUCE
- COFFEE BAR & HOT FOODS AREA
- BEER & WINE
- DAIRY, DELI & MEAT SELECTION
- ON-THE-GO COLD FOODS SELECTION
- COLD BEVARAGE SELECTION
- PERSONAL GROCERY ITEMS
- GENERAL GROCERY ITEMS
- DISTILLED SPIRITS
- TOBACCO PRODUCTS

Approximately 1,941 sq.ft. of floor space.

Approximately 662 sq.ft. of shelving / display area.

Approximately 174 sq.ft. of general market food items.

Approximately 393 sq.ft. of convenience store items (with alcohol)

Approximately 58 sq.ft. of alcohol

EXHIBIT "C" - DETAILED FLOOR PLAN

Approximately 94 sq.ft. of cashier's counter.

NOTE:
THIS DRAWING IS FOR ILLUSTRATION PURPOSES ONLY AND IS NOT TO BE USED AS A BUILDING PLAN OR FOR ANY OTHER PURPOSE. DIMENSIONS ARE DERIVED FROM RECORD DATA BASE. ACCURACY IS ASSUMED TO BE CORRECT BUT IS NEITHER EXPRESSED NOR IMPLIED. THIS DRAWING SHALL REMAIN THE PROPERTY OF DIRK POESCHEL LAND DEVELOPMENT SERVICES, INC. AND SHALL NOT BE USED OR DUPLICATED FOR ANY REASON, WITHOUT WRITTEN PERMISSION.

