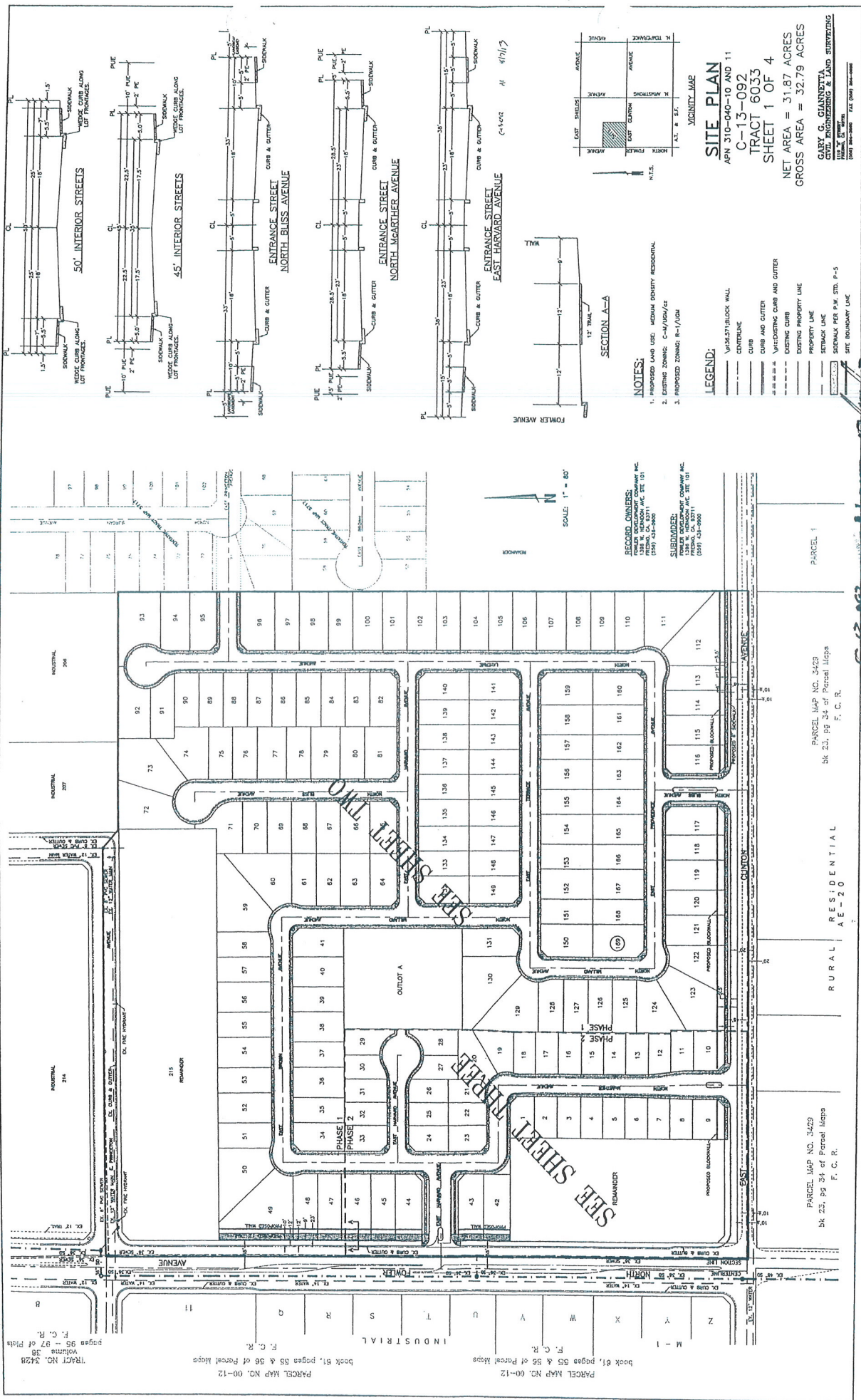


Exhibit D:
Exhibits for Conditional Use Permit No. C-13-092



NOTES:
 1. PROPOSED LANE USE: MEDIUM DENSITY RESIDENTIAL
 2. EXISTING ZONING: C-4/MSU/14
 3. PROPOSED ZONING: R-1/MSU

LEGEND:
 VERTICAL BLOCK WALL
 CURB
 CURB AND GUTTER
 VERTICAL CURB AND GUTTER
 EXISTING CURB
 EXISTING PROPERTY LINE
 PROPERTY LINE
 STAKE LINE
 STAKE PER P.M. STD. P-5
 SITE BOUNDARY LINE

SITE PLAN
 APN 310-040-10 AND 11
 C-13-092
 TRACT 6033
 SHEET 1 OF 4
 NET AREA = 31.87 ACRES
 GROSS AREA = 32.79 ACRES
 GARY G. GIANNETTA
 CIVIL ENGINEERING & LAND SURVEYING
 1001 N. G ST. #100
 FRESNO, CA 93711
 (509) 434-0000
 FAX (509) 434-0000

APPL NO. **C-13-092** EXHIBIT A DATE **8/11/13**

PROJ. ENG. _____ DATE _____

TRAFFIC ENG. _____ DATE _____

COND. APPROVED BY _____ DATE _____
 CITY OF FRESNO PLANNING & DEVELOPMENT DEPT

TRACT NO. 3428
 Volume 38
 pages 85 - 97 of Plans
 F. C. R.

PARCEL MAP NO. 00-12
 book 81, pages 85 & 86 of Parcel Maps
 F. C. R.

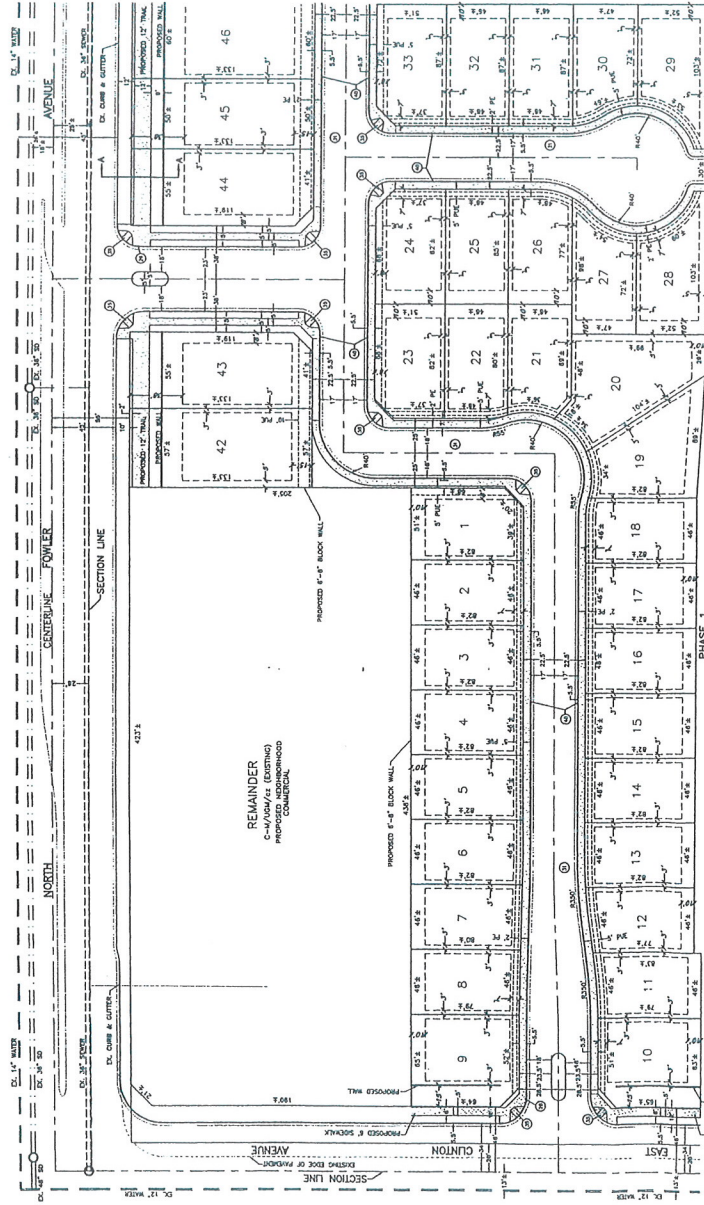
PARCEL MAP NO. 00-12
 book 81, pages 85 & 86 of Parcel Maps
 F. C. R.

PARCEL MAP NO. 3429
 bk 23, pp 34 of Parcel Maps
 F. C. R.

RURAL RESIDENTIAL
 AE-20

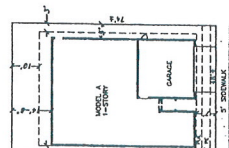
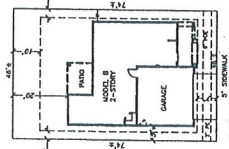
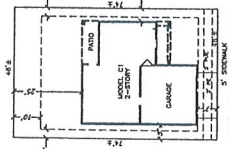
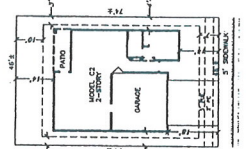
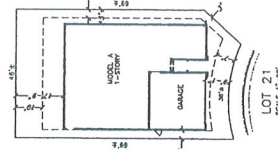
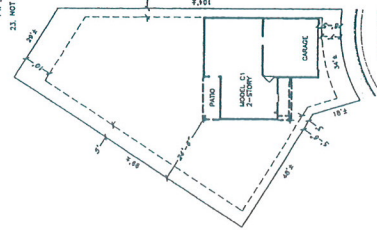
PARCEL MAP NO. 3428
 bk 23, pp 34 of Parcel Maps
 F. C. R.

DATE: 8/11/13



SEE SHEET TWO

SCALE 1" = 40'



NOTES:

1. CONTRACTOR MUST VERIFY ALL APPROVALS FOR UTILITIES, ERECTION, AND INSPECTION REQUIRED AS CONDITIONS OF PROPOSING, ERECTION, CONSTRUCTION AND OCCUPANCY.
2. THE EXISTING SIDEWALK SHALL BE MAINTAINED AS FAR AS POSSIBLE. ANY REMOVAL SHALL BE REPLACED WITH A NEW SIDEWALK OF EQUAL OR BETTER QUALITY.
3. ALL UNIMPROVED PAVING SHALL BE REPLACED WITH ASPHALT OR CONCRETE PAVING TO MATCH EXISTING PAVING.
4. ALL EXISTING UTILITIES SHALL BE MAINTAINED AND PROTECTED. ANY REMOVAL SHALL BE REPLACED WITH NEW UTILITIES OF EQUAL OR BETTER QUALITY.
5. ALL EXISTING UTILITIES SHALL BE MAINTAINED AND PROTECTED. ANY REMOVAL SHALL BE REPLACED WITH NEW UTILITIES OF EQUAL OR BETTER QUALITY.
6. ALL EXISTING UTILITIES SHALL BE MAINTAINED AND PROTECTED. ANY REMOVAL SHALL BE REPLACED WITH NEW UTILITIES OF EQUAL OR BETTER QUALITY.
7. ALL EXISTING UTILITIES SHALL BE MAINTAINED AND PROTECTED. ANY REMOVAL SHALL BE REPLACED WITH NEW UTILITIES OF EQUAL OR BETTER QUALITY.
8. ALL EXISTING UTILITIES SHALL BE MAINTAINED AND PROTECTED. ANY REMOVAL SHALL BE REPLACED WITH NEW UTILITIES OF EQUAL OR BETTER QUALITY.
9. ALL EXISTING UTILITIES SHALL BE MAINTAINED AND PROTECTED. ANY REMOVAL SHALL BE REPLACED WITH NEW UTILITIES OF EQUAL OR BETTER QUALITY.
10. ALL EXISTING UTILITIES SHALL BE MAINTAINED AND PROTECTED. ANY REMOVAL SHALL BE REPLACED WITH NEW UTILITIES OF EQUAL OR BETTER QUALITY.
11. ALL EXISTING UTILITIES SHALL BE MAINTAINED AND PROTECTED. ANY REMOVAL SHALL BE REPLACED WITH NEW UTILITIES OF EQUAL OR BETTER QUALITY.
12. ALL EXISTING UTILITIES SHALL BE MAINTAINED AND PROTECTED. ANY REMOVAL SHALL BE REPLACED WITH NEW UTILITIES OF EQUAL OR BETTER QUALITY.
13. ALL EXISTING UTILITIES SHALL BE MAINTAINED AND PROTECTED. ANY REMOVAL SHALL BE REPLACED WITH NEW UTILITIES OF EQUAL OR BETTER QUALITY.
14. ALL EXISTING UTILITIES SHALL BE MAINTAINED AND PROTECTED. ANY REMOVAL SHALL BE REPLACED WITH NEW UTILITIES OF EQUAL OR BETTER QUALITY.
15. ALL EXISTING UTILITIES SHALL BE MAINTAINED AND PROTECTED. ANY REMOVAL SHALL BE REPLACED WITH NEW UTILITIES OF EQUAL OR BETTER QUALITY.
16. ALL EXISTING UTILITIES SHALL BE MAINTAINED AND PROTECTED. ANY REMOVAL SHALL BE REPLACED WITH NEW UTILITIES OF EQUAL OR BETTER QUALITY.
17. ALL EXISTING UTILITIES SHALL BE MAINTAINED AND PROTECTED. ANY REMOVAL SHALL BE REPLACED WITH NEW UTILITIES OF EQUAL OR BETTER QUALITY.
18. ALL EXISTING UTILITIES SHALL BE MAINTAINED AND PROTECTED. ANY REMOVAL SHALL BE REPLACED WITH NEW UTILITIES OF EQUAL OR BETTER QUALITY.
19. ALL EXISTING UTILITIES SHALL BE MAINTAINED AND PROTECTED. ANY REMOVAL SHALL BE REPLACED WITH NEW UTILITIES OF EQUAL OR BETTER QUALITY.
20. ALL EXISTING UTILITIES SHALL BE MAINTAINED AND PROTECTED. ANY REMOVAL SHALL BE REPLACED WITH NEW UTILITIES OF EQUAL OR BETTER QUALITY.
21. ALL EXISTING UTILITIES SHALL BE MAINTAINED AND PROTECTED. ANY REMOVAL SHALL BE REPLACED WITH NEW UTILITIES OF EQUAL OR BETTER QUALITY.
22. ALL EXISTING UTILITIES SHALL BE MAINTAINED AND PROTECTED. ANY REMOVAL SHALL BE REPLACED WITH NEW UTILITIES OF EQUAL OR BETTER QUALITY.
23. NOT APPLICABLE.

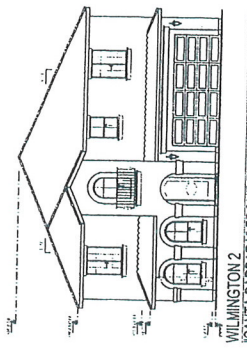
LEGEND:

- WHITE BLOCK WALL
- CONCRETE
- CURB
- EXISTING CURB AND GUTTER
- EXISTING CURB
- EXISTING PROPERTY LINE
- PROPERTY LINE
- RIGHT OF WAY LINE
- SETBACK LINE
- SIDEWALK PER P.W. STD. P-5
- ⑥ SEE CORRESPONDING NOTES

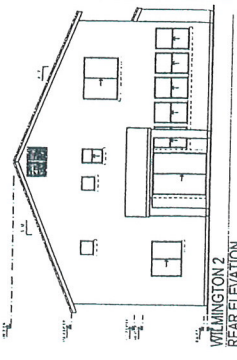
SITE PLAN
 APN 310-040-10 AND 11
 C-13-092
 TRACT 6033
 SHEET 3 OF 4

GARY C. GIANNETTA
 LICENSED PROFESSIONAL LAND SURVEYOR
 No. 12789
 1000 S. GARDEN ST. SUITE 100
 ANAHEIM, CA 92805
 TEL: 714/771-1111
 DATE: 8/27/13

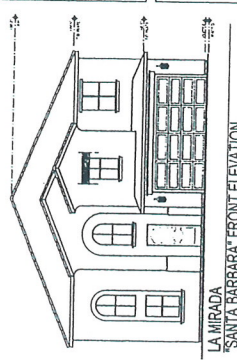
APPL. NO. **C-13-092** EXHIBIT **A3** DATE **08/16/13**
 PROJ. ENG. _____ DATE _____
 TRAFFIC ENG. _____ DATE _____
 COND. APPROVED BY _____ DATE _____
 CITY OF ANAHEIM & DEVELOPMENT DEPT



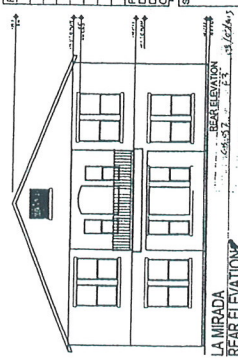
WILMINGTON 2
 'SANTA BARBARA' FRONT ELEVATION



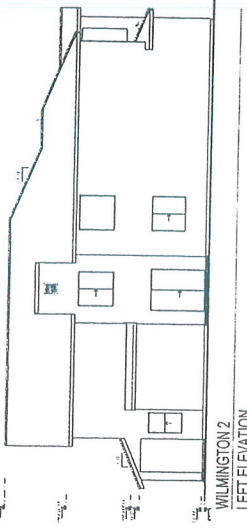
WILMINGTON 2
 REAR ELEVATION



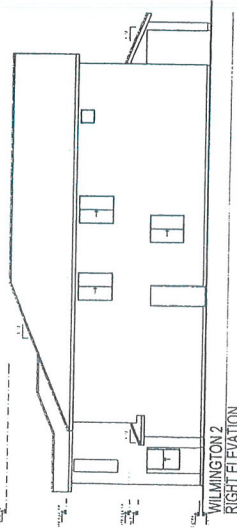
LA MIRADA
 'SANTA BARBARA' FRONT ELEVATION



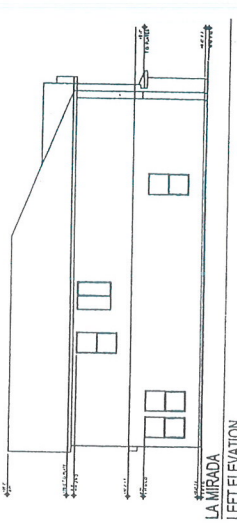
LA MIRADA
 REAR ELEVATION



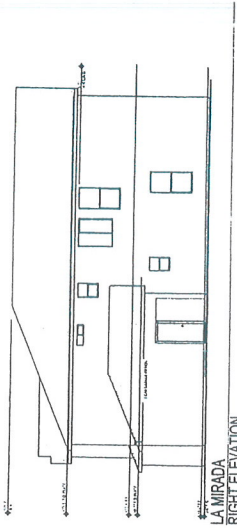
WILMINGTON 2
 LEFT ELEVATION



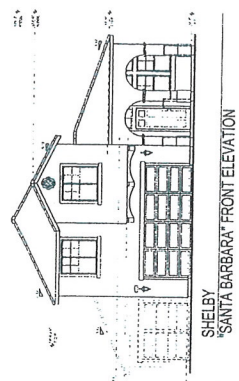
WILMINGTON 2
 RIGHT ELEVATION



LA MIRADA
 LEFT ELEVATION



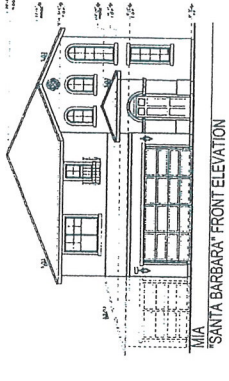
LA MIRADA
 RIGHT ELEVATION



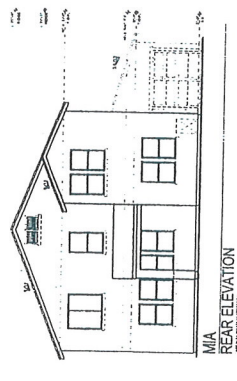
SHELBY
 'SANTA BARBARA' FRONT ELEVATION



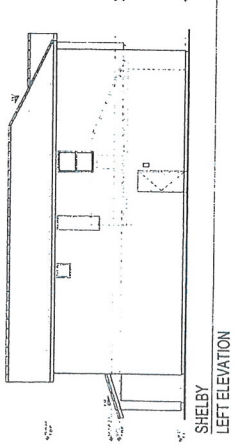
SHELBY
 REAR ELEVATION



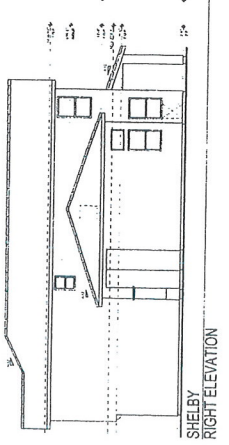
MIA
 'SANTA BARBARA' FRONT ELEVATION



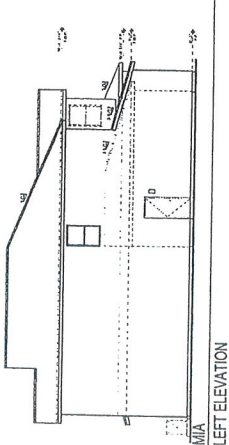
MIA
 REAR ELEVATION



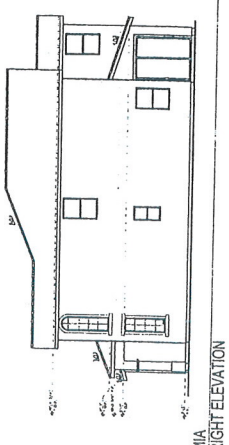
SHELBY
 LEFT ELEVATION



SHELBY
 RIGHT ELEVATION



MIA
 LEFT ELEVATION



MIA
 RIGHT ELEVATION

APPL. NO. C13092 EXHIBIT ES DATE 08/17/13

PROJ. ENG. _____ DATE _____
 TRAFFIC ENG. _____ DATE _____
 COND. APPROVED BY _____ DATE _____

CITY OF FRESNO PLANNING & DEVELOPMENT DEPT

