

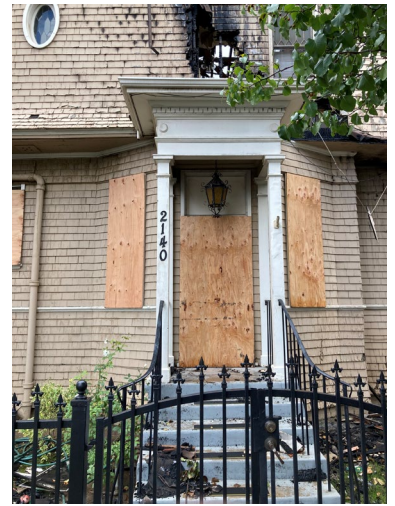
**Emergency Condition Assessment
Historic Preservation Dept. :12/08/2021**

**HP #115 Kutner Home
1651 L St [b. 1901] (APN 466-141-01)**



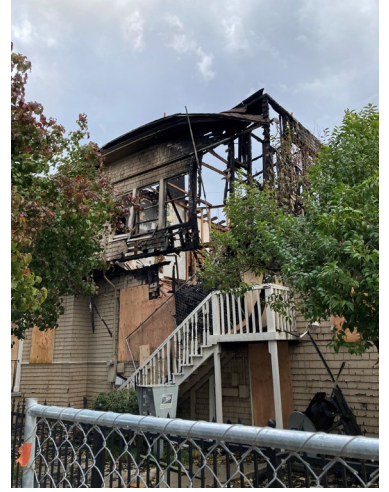
**Emergency Condition Assessment
Historic Preservation Dept. :10/25/2021**

**HP #115 Kutner Home
1651 L St [b. 1901] (APN 466-141-01)**



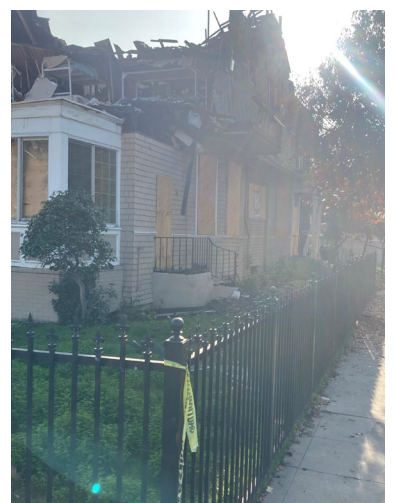
**Emergency Condition Assessment
Historic Preservation Dept. :10/25/2021**

**HP #115 Kutner Home
1651 L St [b. 1901] (APN 466-141-01)**



**Emergency Condition Assessment
Historic Preservation Dept. :12/08/2021**

**HP #115 Kutner Home
1651 L St [b. 1901] (APN 466-141-01)**



**Emergency Condition Assessment
Historic Preservation Dept. :12/08/2021**

**HP #115 Kutner Home
1651 L St [b. 1901] (APN 466-141-01)**

