

# EXHIBIT E

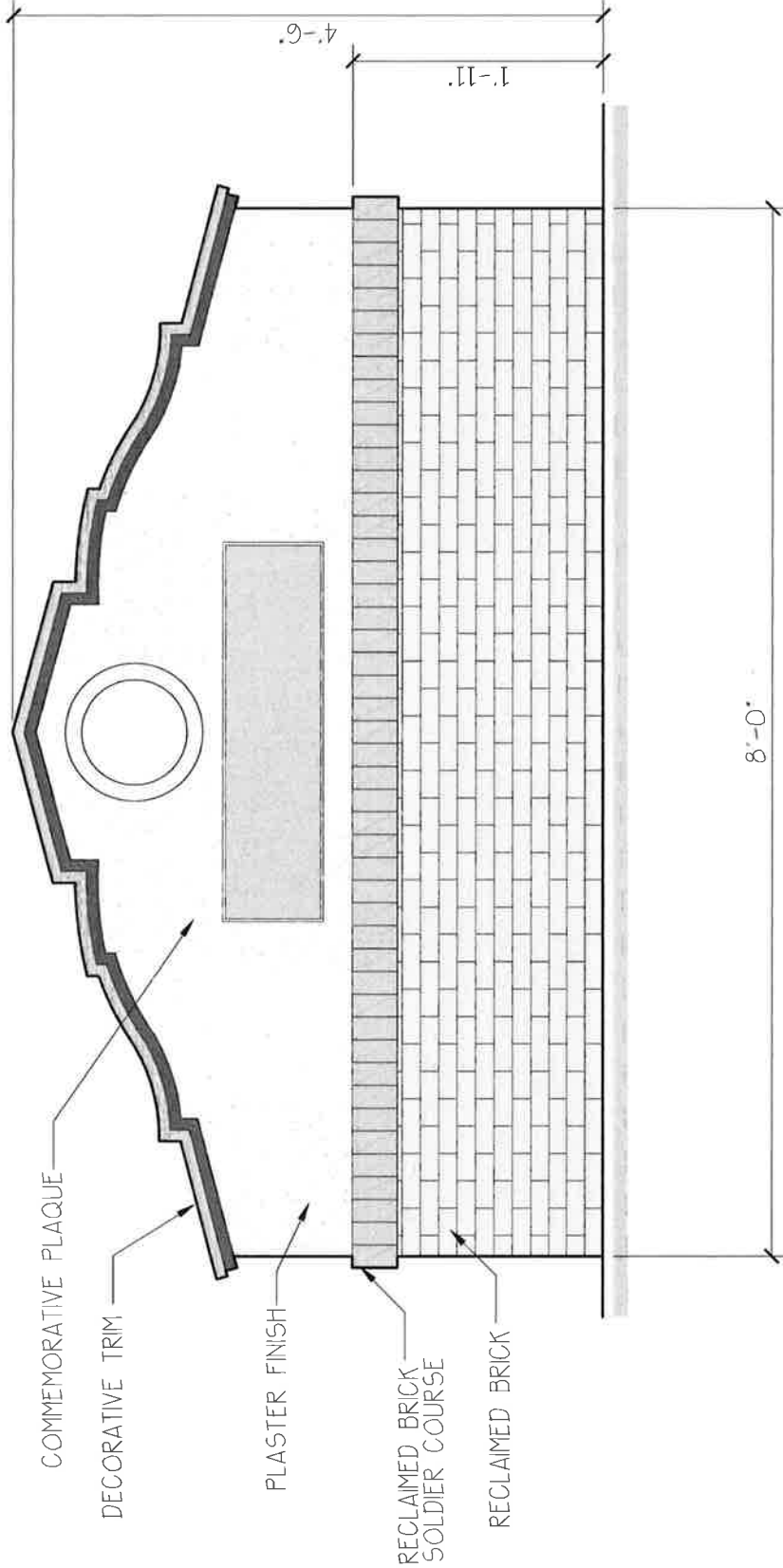
ASS3

Date: 11/14/2016

NEW PERIMETER FENCING FOR:  
PRODUCERS DAIRY FOODS INC.  
450 E. BELMONT AVE.  
APN. 459-003-023

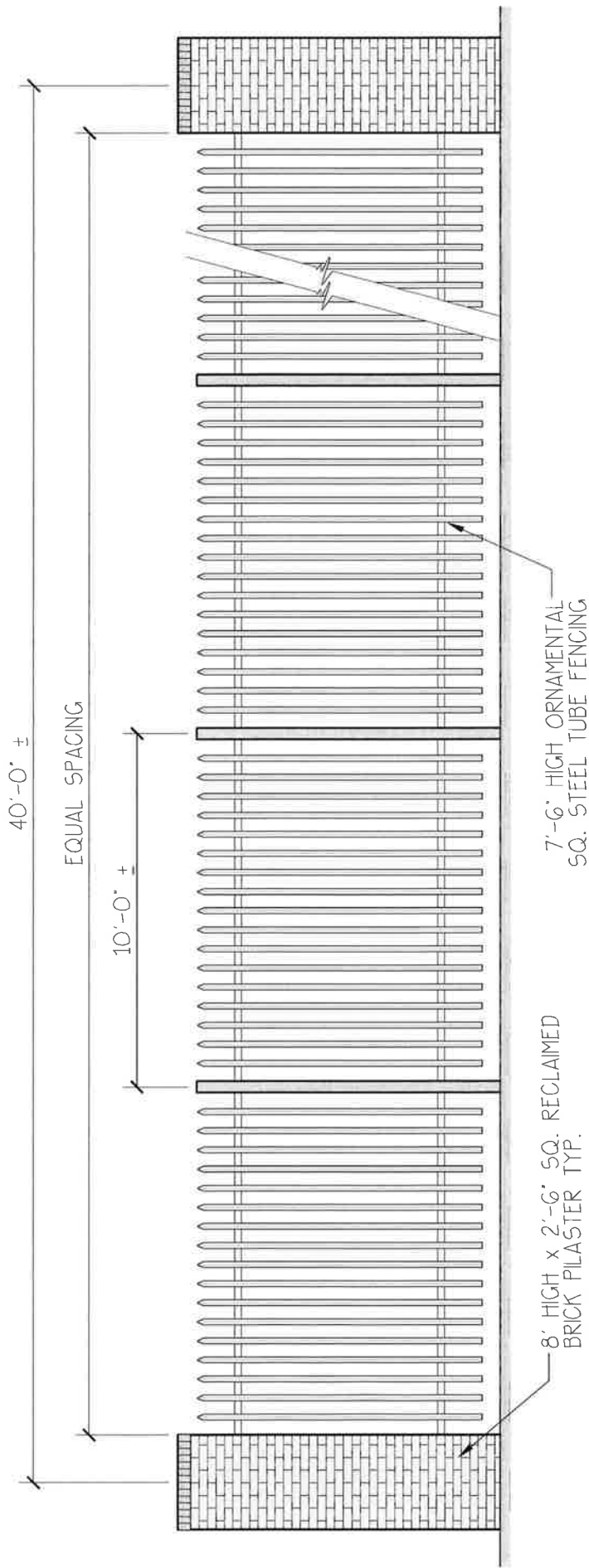


JEFF CAZALY  
ARCHITECT  
735 W. ALLIUM, SUITE 104  
FRESNO, CA 93711  
COMMERCIAL AND  
INDUSTRIAL DESIGN  
jeff@jeffcazaly.com Tel: (559) 291-1889 Fax: (559) 291-1882  
Lic. No. C 26460



# COMMEMORATIVE MONUMENT

SCALE: 1/4" = 1'-0"



# TYP. PERIMETER FENCE SECTION

SCALE: 1/4" = 1'-0"

**J E F F C A Z A L Y**  
**ARCHITECT**  
 705 W. ALLIANCE SUITE 104  
 FRESNO, CA 93711

COMMERCIAL AND INDUSTRIAL DESIGN

jeff@jcazalyconsulting.com Tel: (559) 291-1889  
 Lic., NO. C 26460 Fax: (559) 291-1882

LICENSED ARCHITECT

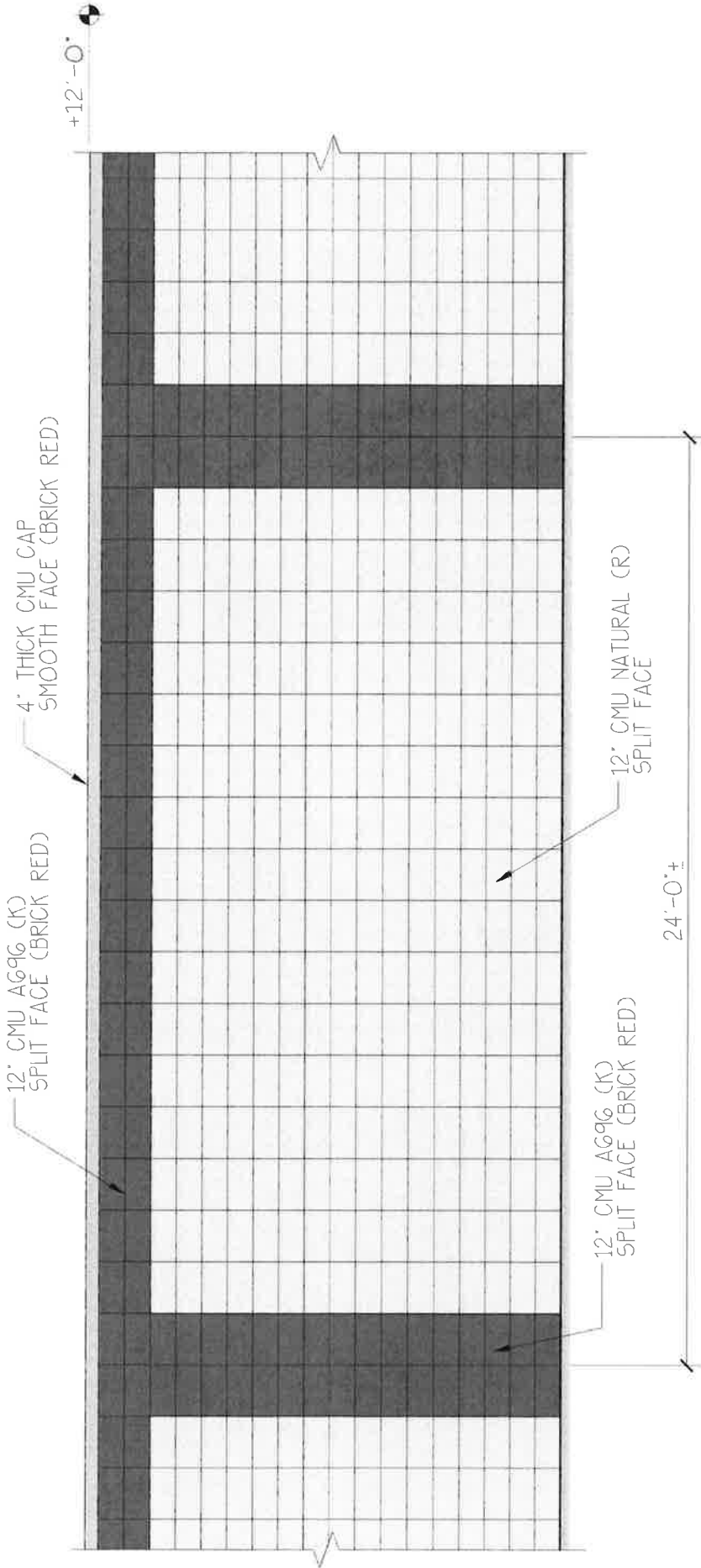
JEFFREY A. CAZALY  
 No. C-26460  
 RENEWAL DATE  
 8-31-17

STATE OF CALIFORNIA

NEW PERIMETER FENCING FOR:  
**PRODUCERS DAIRY FOODS INC.**  
 450 E. BELMONT AVE  
 A.P.N. 459-003-023

Date: 11/14/2016

# AS2



# TYP. PERIMETER CMU SOUND WALL ELEVATION

SCALE: 1/4" = 1'-0"

**JEFF CAZALY ARCHITECT**  
 735 W. ALLUVIAL SUITE 04  
 FRESNO, CA 93711

**COMMERCIAL AND INDUSTRIAL DESIGN**

jeff@jcazalyconsulting.com Tel: (559) 291-1889  
 Lic. NO. C 26460 Fax: (559) 291-1882



**NEW PERIMETER FENCING FOR:**  
**PRODUCERS DAIRY FOODS INC.**  
 450 E. BELMONT AVE  
 A.P.N. 459-003-023

Date: 11/14/2016

# AS4