



PUBLIC WORKS DEPARTMENT

TRAFFIC AND ENGINEERING SERVICES DIVISION

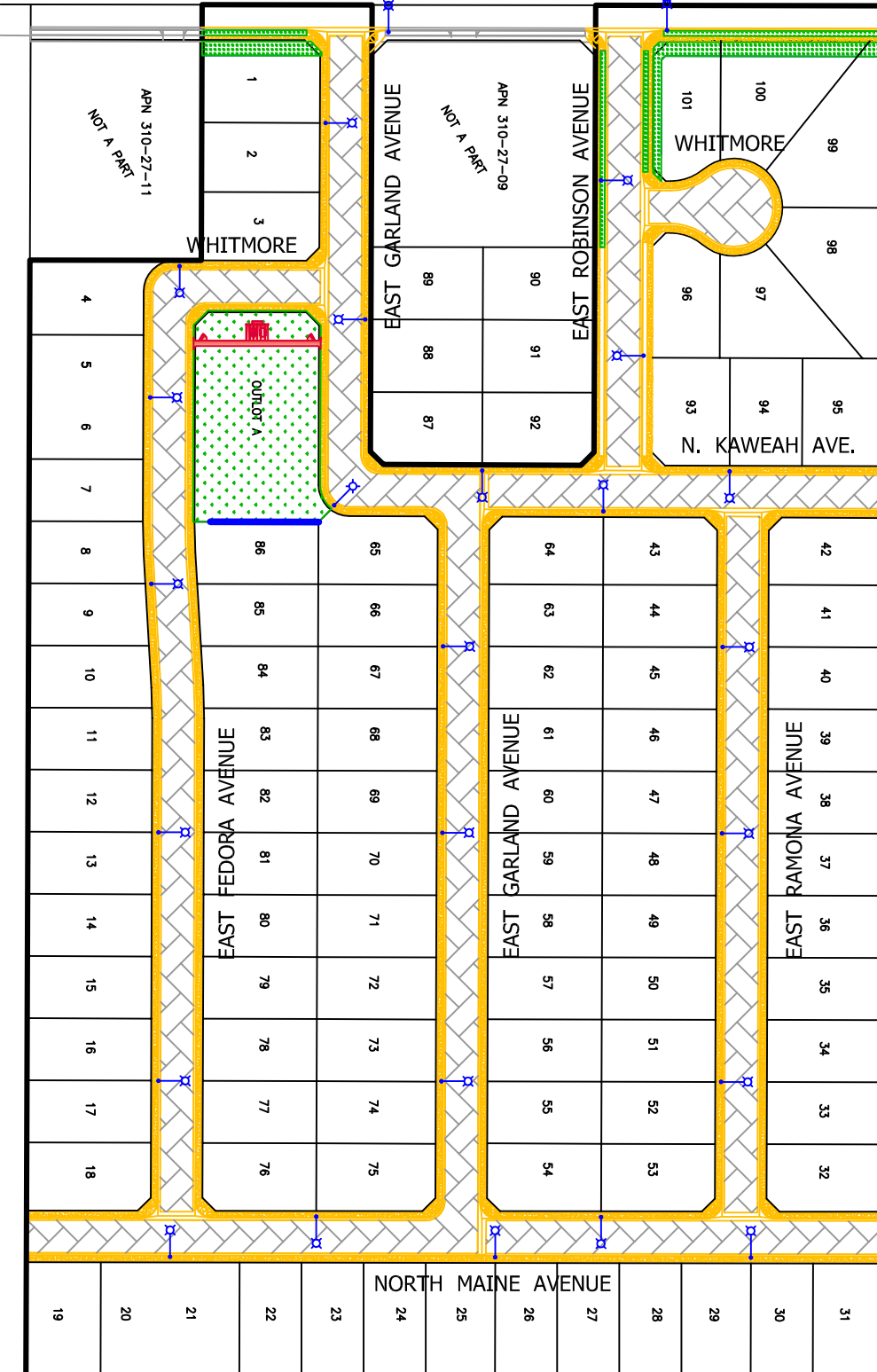
FEATURES TO BE ADDED BY ANNEXATION NO. 70
COMMUNITY FACILITIES DISTRICT NO. 11


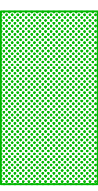
NOT TO SCALE
Revised July 27, 2016


FINAL TRACT MAP NO. 6067, "NO PHASES"

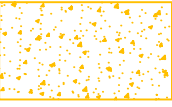
NORTH LOCAN AVENUE

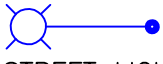
LANDSCAPE AND IRRIGATION:



-  BUFFERS/PARKWAYS
- TREES & SHRUBS = 8,403 SF
-  OUTLOT A
- TURF & BEDS = 24,970 SF
- PICNIC TABLES = 2 EACH
- BENCHES = 2 EACH
- ARBOR = 1 EACH
- BBQ STRUCTURE = 1 EACH
- CONCRETE WALK & PADS = 1,150 SF
- BLOCK WALL = 100 LF
- LARGE TREES = 23 EA
- SMALL TREES = 8 EA

-  INTERIOR PAVEMENT:
TOTAL AREA = 153,000 SF

-  CONCRETE IMPROVEMENTS:
CURB & GUTTER = 9,300 LF
VALLEY GUTTER = 3,828 SF
SIDEWALK & CURB RAMPS = 49,125 SF

-  STREET LIGHTS:
TOTAL = 27 EACH (2 safety lights)